



LINDA ELMSLIE
 Sales Representative*

Wildwood Realty Inc.

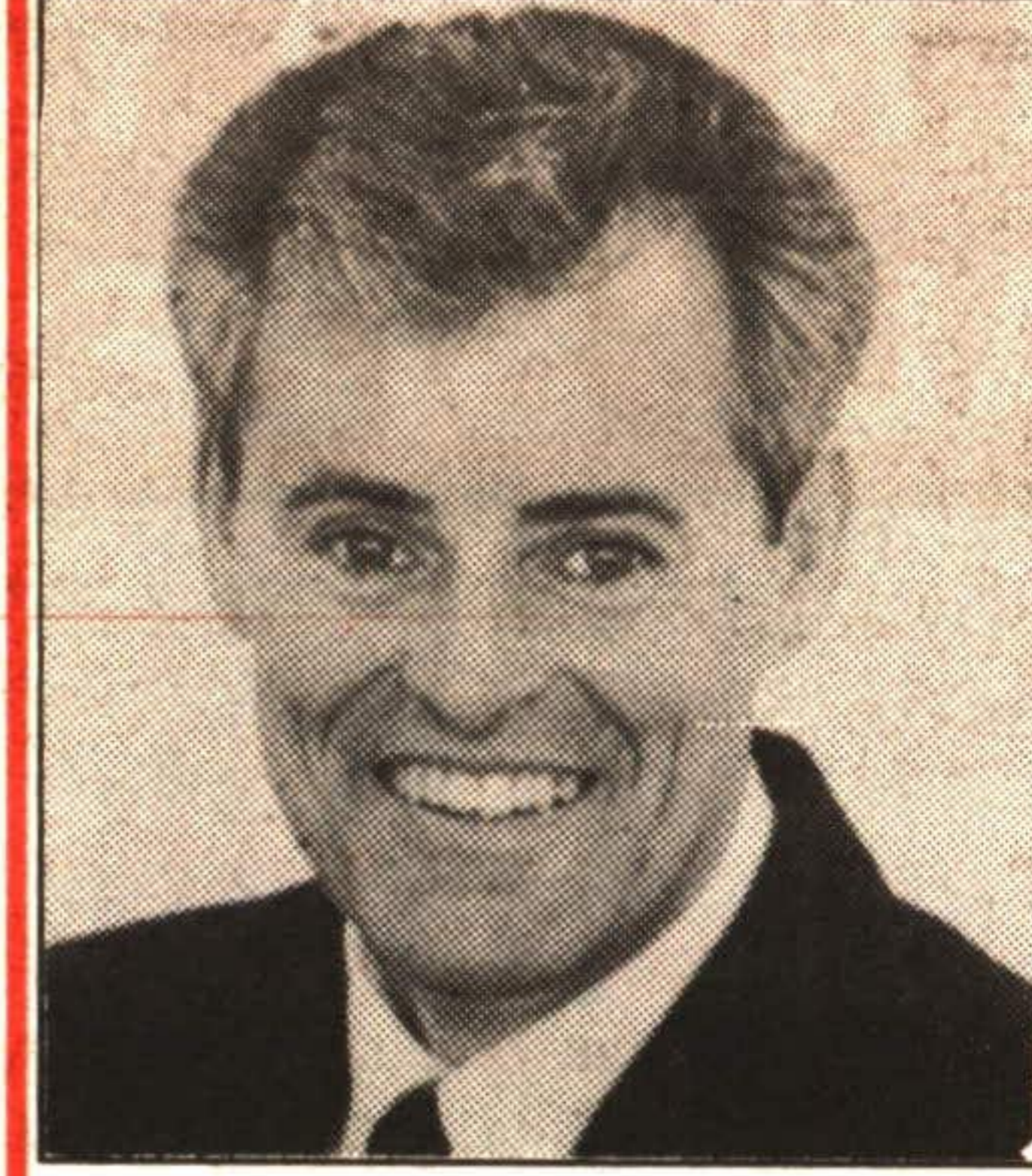
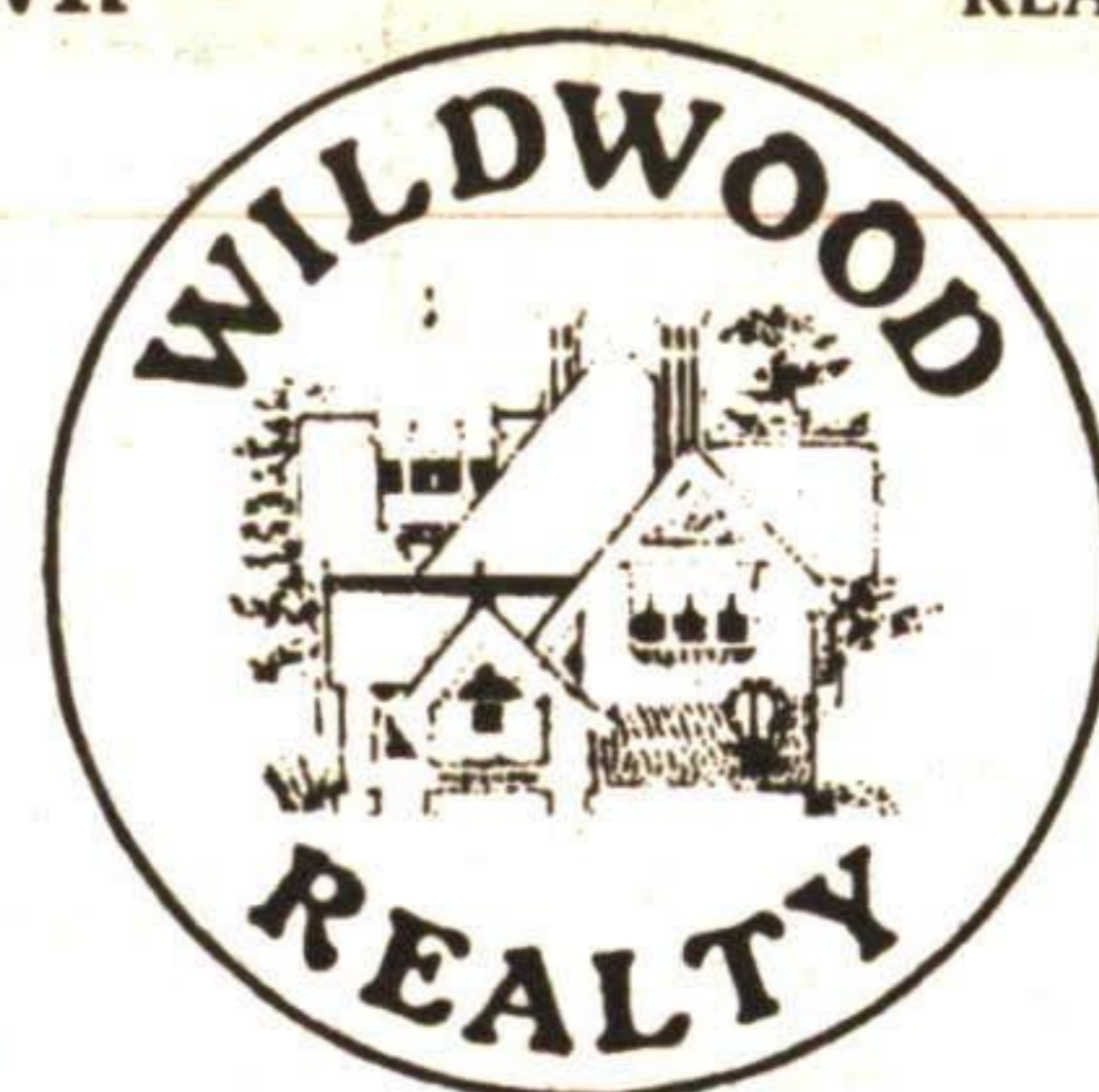
121 PRINCE CHARLES DRIVE, Georgetown

REALTOR

873-8839

454-8706
 BRAMPTON LINE

Serving Georgetown Area Since 1970



BRUCE ELMSLIE
 Broker/Owner***

Your House SOLD in 90 Days or Bruce Elmslie Buys It!!!
Top Market Price Guaranteed!



NEW PRICE

HOBBY FARM 7 ACRES

Rolling, treed acreage, great set up for horses. Neat as a pin bungalow with family room addition and built-in hot tub, triple glazed windows, many upgrades, finished basement with w/o. Kidney shaped inground pool and barn for the horses. \$259,900. WW-269



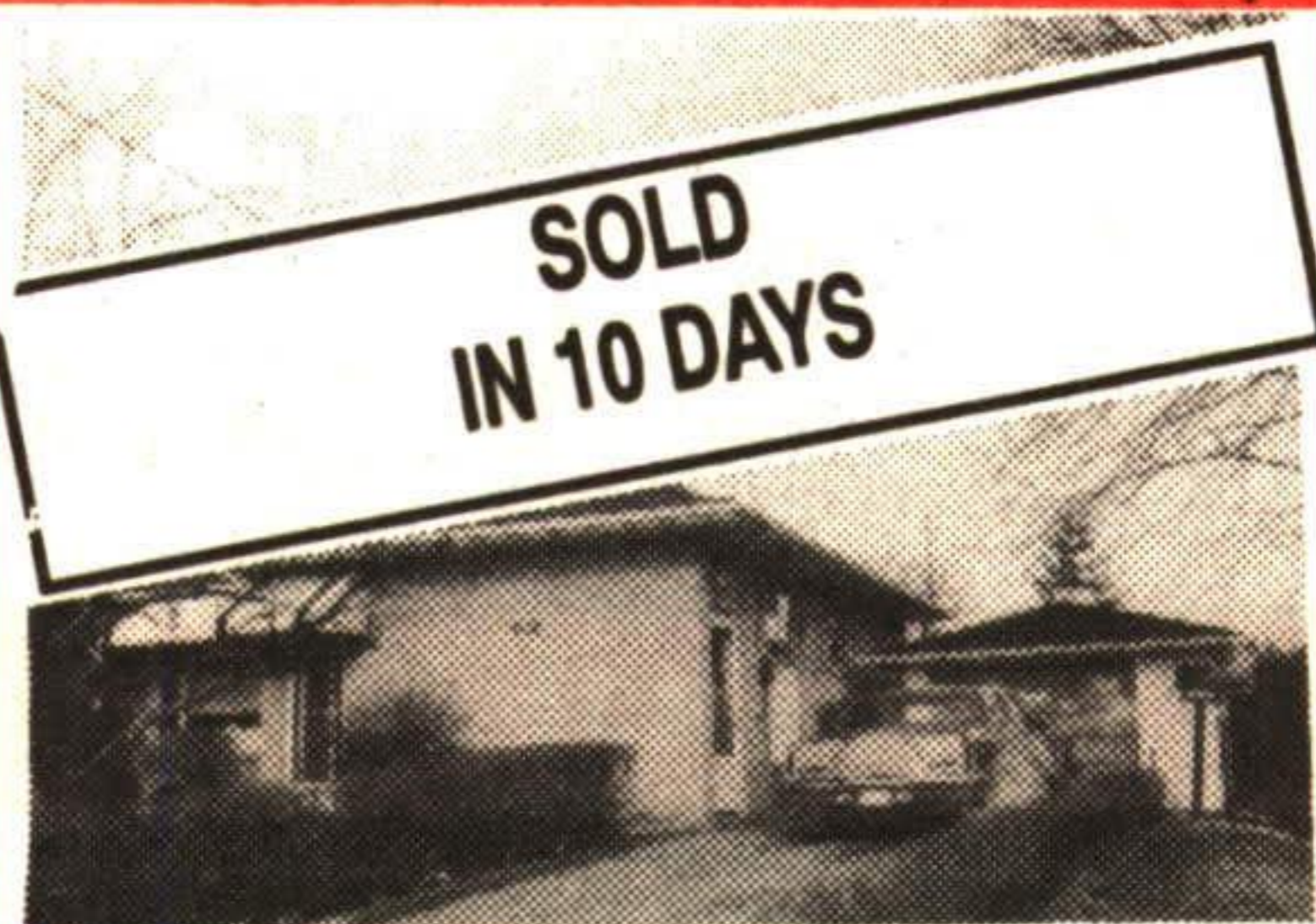
NEW

One and a half year old charmer with attractive floorplan! 17 foot kit., with bleached oak cupboards! Basement family room under construction, basement walkout and 3 bathrooms! Newly listed at \$154,900. WW-286



BETWEEN GEORGETOWN AND MILTON 1 ACRE

Spacious split entrance bungalow on manicured property - very spacious rooms, entertainment size dining room, sliding doors from country sized kitchen to large deck. Finished lower level, fireplace and walkout to oversized garage. Let's have a look - \$279,900. WW-283



SOLD IN 10 DAYS

121 PRINCE CHARLES



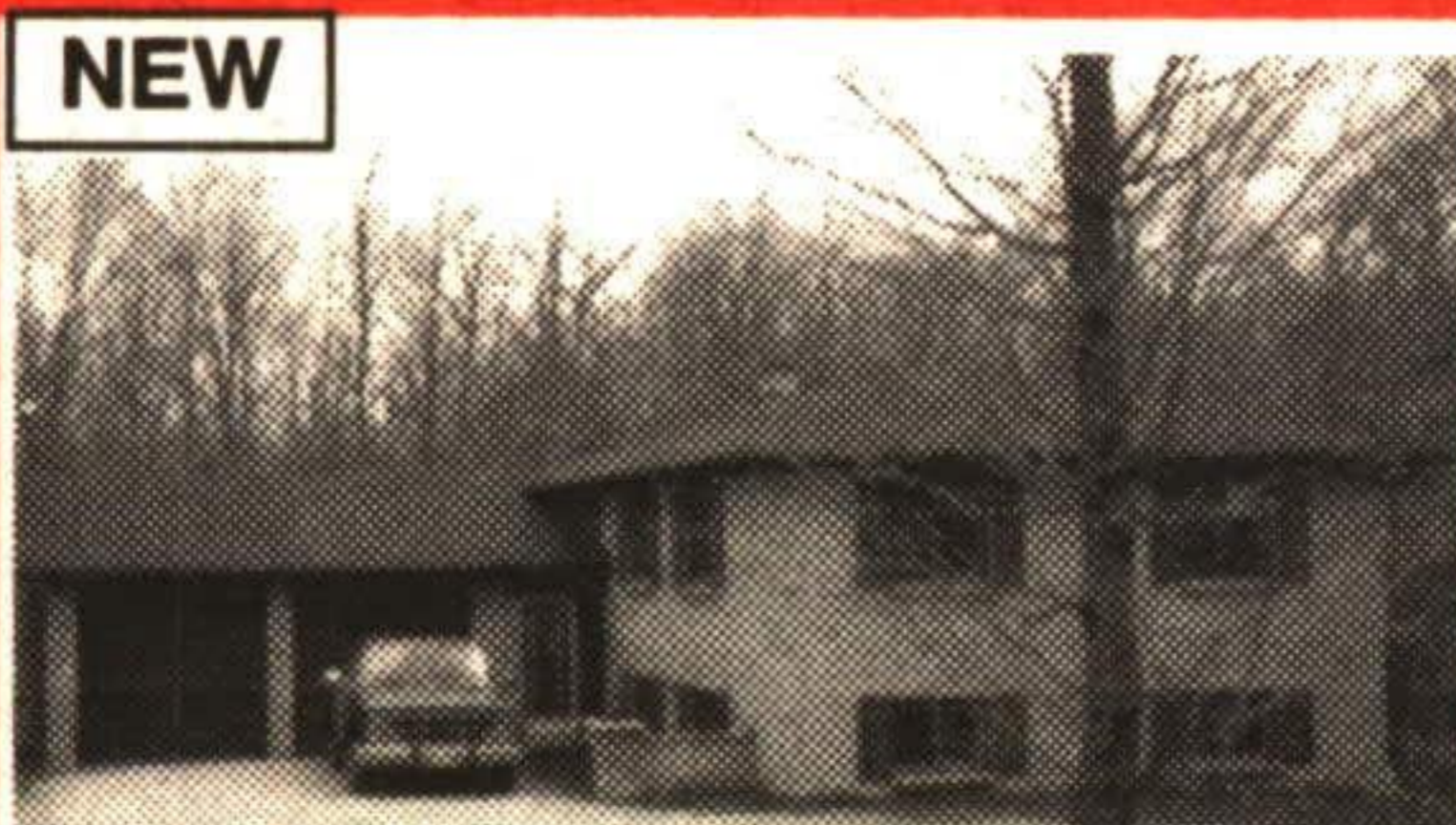
TWO BEDROOM IN-LAW SUITE!

Large, distinctive country bungalow in Halton Hills on 2+ rolling acres. Huge living room, new sun room, 3 or 4 bdms. All new windows. Bright, fully contained 2 bdrm in-law suite, above grade with basement walkout. Flower beds, mature trees, even a creek running through the property. Plenty of room for an extended family! Asking price \$279,900. Directions: North on Trafalgar Rd. to Ballinacree. Look for our sign. WW-277



HESLOP AREA

\$349,900. Gorgeous executive style home overlooking beautiful wooded ravine. Professionally landscaped yard with inground pool. Home boasts large kitchen, 3 skylights, gas fireplace and much more. Call for more details Andrea Skanes*. WW-AS



NEW

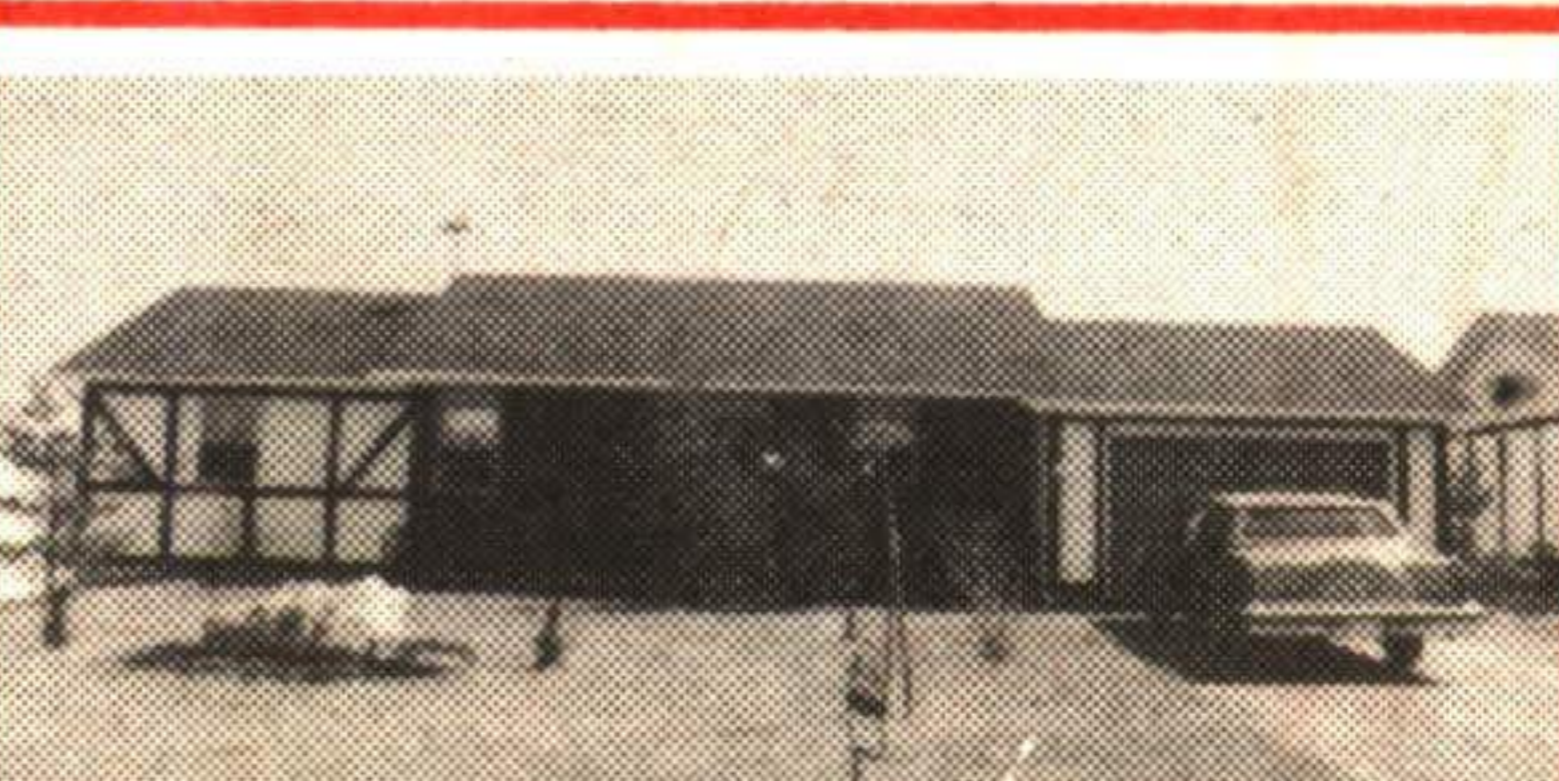
EDGE OF GEORGETOWN

Very private treed property set nicely back from the road. Pretty, updated kitchen, completely finished basement with gamesroom, fireplace +3 piece bathroom. 2 walkouts to gorgeous "yard-in-the-woods" with inground pool. Priced to sell at \$239,900. WW-287



OHI SO SERENE!

One manicured acre just north of Georgetown near Terra Cotta. Large sidesplit with fabulous family/spa room addition. Entire back of the house is windows, 3 baths, finished basement and huge lobby room. A country haven with a winding paved driveway. Asking \$309,000. Directions: Above Mayfield Rd., 4 minutes north of Georgetown Golf club on 10th Line. Drive by then give us a call! WW-263



39 DOD'S DRIVE IN ALTON

Spacious bungalow with oak kitchen, large living/dining room combination with walkout doors to yard. Terrific finished recreation room and oversized garage. Asking price \$159,900! WW-278



WOW!! \$149,900!

This could be your lovely new home! Clean, clean 3 bdrm (huge master with walk-in closet), two bathrooms, finished bsmt. Walkout doors from dining room to new deck and tidy yard. No neighbours behind! Directions: 5A Pennington Cr., south of the plaza on Mountainview to Pennington Crescent. WW-266



ONE OF THE "BIGGEST LOTS" IN THE SUBDIVISION

Stunning 2800 sq. ft. 4 bedroom home - full of attractive features, huge kitchen. Your family will love it. Let's have a look \$249,900. WW-275



KICK THAT FOOTBALL

Huge lot for the kids - Affordable 3 bedroom family home with hardwood floors, gas fireplace in living room, gleaming new kitchen and new windows. Better hurry!! \$139,900. WW-281



NEW PRICE

OPEN CONCEPT

Charming log home on 4 rolling acres with small barn. Entertainment size kitchen & living room with stone fireplace and pine floors. Three bedrooms plus finished loft. School bus stops at door. Priced to sell at \$269,000. Directions: South of Village of Erin on 9th line, east on 10th sideroad to property. WW-270



DOLL HOUSE WITH LARGE ROOMS

This home really sparkles at \$149,900!! Pretty living room, 3 generous bedrooms. Extra high and dry basement with 2nd bathroom rough-in and side entrance. Lot size 66' x 124'. Central air. Good value here ... WW-284



NEW PRICE

SPACIOUS HOME WITH INLAW SUITE

Perhaps you would qualify to assume mortgage at 6.5% due March '97. Home - shows beautifully at \$154,900. Call Bruce today! WW-274



100 ACRES - \$149,900

Completely renovated farm house - She'll love it!! Tile drained mostly workable - 10 acre hardwood bush, three barns, 2 silos. One hour drive north of Georgetown - Must be SOLD. WW-241



4 BEDROOM SIDESPLIT

With big fenced backyard, custom deck and kids' playhouse. Hardwood floors, 2 fireplaces, family room. This house shows great!! Access from basement to heated double garage. Call today - only \$176,900. WW-282

OPEN HOUSE

MOTHER'S DAY SUNDAY 2-5 p.m.

25 McINTYRE CRES.

NEW

This home "Just Sparkles". All kinds of upgrades including "NEW KITCHEN". SEPARATE APARTMENT. Let tenants help pay the mortgage - you won't be disappointed!! Call "Now" and ask for Brian*, Sales Rep. \$164,900. WW-288



INCOME!

Sturdy home with light & airy basement boasting 2 TWO - one bdrm apartments. Professionally renovated. High efficiency furnace and roof reshingled in '93. Paved driveway provides ample parking. Asking \$195,000. Call Bruce for more details. WW-285.



WOW

PRICED TO SELL \$144,900

Three bedroom brick home on quiet street near "GO" train. Large living room with hardwood. Eat-in kitchen, central air and vac. 2-4 piece washrooms. Owner retiring - call today! WW279



NEW PRICE

LIMEHOUSE HOBBY FARM

- 34 1/2 ACRES
 Fabulous hobby farm! Open meadows; everflowing stream runs through property. Good 3 bedroom brick house, barn and implement building. Paved road location. Excellent set up for horses. Better hurry! \$259,900. WW-261



TOP CONDITION... OLDER VICTORIAN HOME

2 separate residences, loaded with charm. Hardwood floors, high ceilings, lots of cupboard space, and large fenced yards. Reduced to \$219,900. Ask for Dean*, Sales Rep. WW-230



THIS IS THE ONE ...

Super detached home on a large lot, backing on to stream. Separate garage/workshop. Perfect home for first time buyers. Call Dean*! \$119,900. WW-276



8-1/2 ACRES - EDGE OF TOWN

Trade in your property on this secluded "ONE OF A KIND" wooded acreage. Spotless country home. Fabulous setting with sweeping lawns and the Credit River running right by the house - nature lover's paradise. Call now for complete details. WW-225

Bruce Elmslie is Committed to satisfaction :

When You Purchase Your Home Through Me And You Aren't Completely 100% Satisfied For Any Reason ... I'll Sell It For FREE ... It's Just That Simple,

"I wouldn't sell a house that I wouldn't buy myself"