

**PATIO  
NOW  
OPEN**

**Sunshine  
Allie's**

**FROZEN YOGURT & JUICE BAR**

**OPEN  
7 DAYS  
11-9**



**Fresh Fruit Flavours  
Served in Our All  
Natural Waffle Cones**

- |              |              |
|--------------|--------------|
| Strawberry   | Peach        |
| Raspberry    | Blackberry   |
| Banana       | Blueberry    |
| Chocolate    | Pineapple    |
| Vanilla      | Orange       |
| Pina Colada  | Maple Walnut |
| Rum & Raisin | Mango Tango  |



**Frozen  
Yogurt  
Only  
1 per  
person**

**Freshly Squeezed  
Juices**

- |                     |                   |        |
|---------------------|-------------------|--------|
| Apple               | Orange            | Carrot |
| Grapefruit          | Orange/Strawberry |        |
| Vegetable Cocktails | Lemonade          |        |



**Vegetarian Menu**

- |                |          |
|----------------|----------|
| Veggie Burgers | Falafels |
| Veggie Wieners | Patties  |
|                | Rotis    |

**Behind Pinto Photography 877-0311  
98 Main St. S., Downtown Georgetown**



**Tooth  
Chatter**  
by  
**ALEX  
TRENTON**

**LOWER DENTURES**

If you are a denture wearer, you will experience some kind of discomfort during the life of your dentures. Lower dentures usually cause more troubles than uppers. Because bottom dentures have little suction to hold them in place, they are more likely to move around, therefore causing various forms of discomfort. Also, poor ridges cause dentures to move easily, because the denture has little to hold onto for stability. The tongue constantly moving as you talk and chew also interferes with the lower dentures. Because of all these factors that effect the function of the lower dentures, most people do have trouble at some point. In fact, many people don't wear their lowers. They divorce them from their upper denture mates by loosing them in the most unlikely places! Some seek refuge in the bottom drawers, bottom of the bed, under the bed, amongst lipsticks and combs in ladies' handbags, lunch pails, back pockets, and if they get lucky, they are left for ever soaking in a denture bath or cup of water!

**SOLUTIONS!**

There are different techniques that can be used to improve the fit of the lower denture, such as a soft-liner insert. This is a permanent liner that will stay soft and give added comfort and stability. For more information, contact our office. We specialize in problem lower dentures. Consultations are always free.

**WE CARE ABOUT YOUR SMILE!**  
Alex W. Trenton, D.D., F.C.A.D. (A)  
Denturist  
The Denture Clinic,  
18 Church Street,  
Georgetown, Ontario  
(905) 877-2359  
*(Across from the Library and Cultural Centre)*

**Acton dancers  
perform well**

Twelve students of the Acton School of Dance participated in the Royal Academy of Dancing Ballet Examinations on April 13. All twelve passed the examination.

Grade 1: Stephanie Bailey, Katie Banks, Andrew Break, and Meaghan Finnie. Grade 2: Katherine Hopkins. Grade 3: Mary Pat O'Meara and Megaen McGrath. Grade 4: Devon Lambert. Grade 5: Laura Hamilton. Grade 6: Susan Lehman, Carolyn Miles, Rebecca Van Klink.

Examiners travel from the United Kingdom to hold these examinations which take place every year. A high level of performance is expected from these students, so even to be asked to participate is an honor.

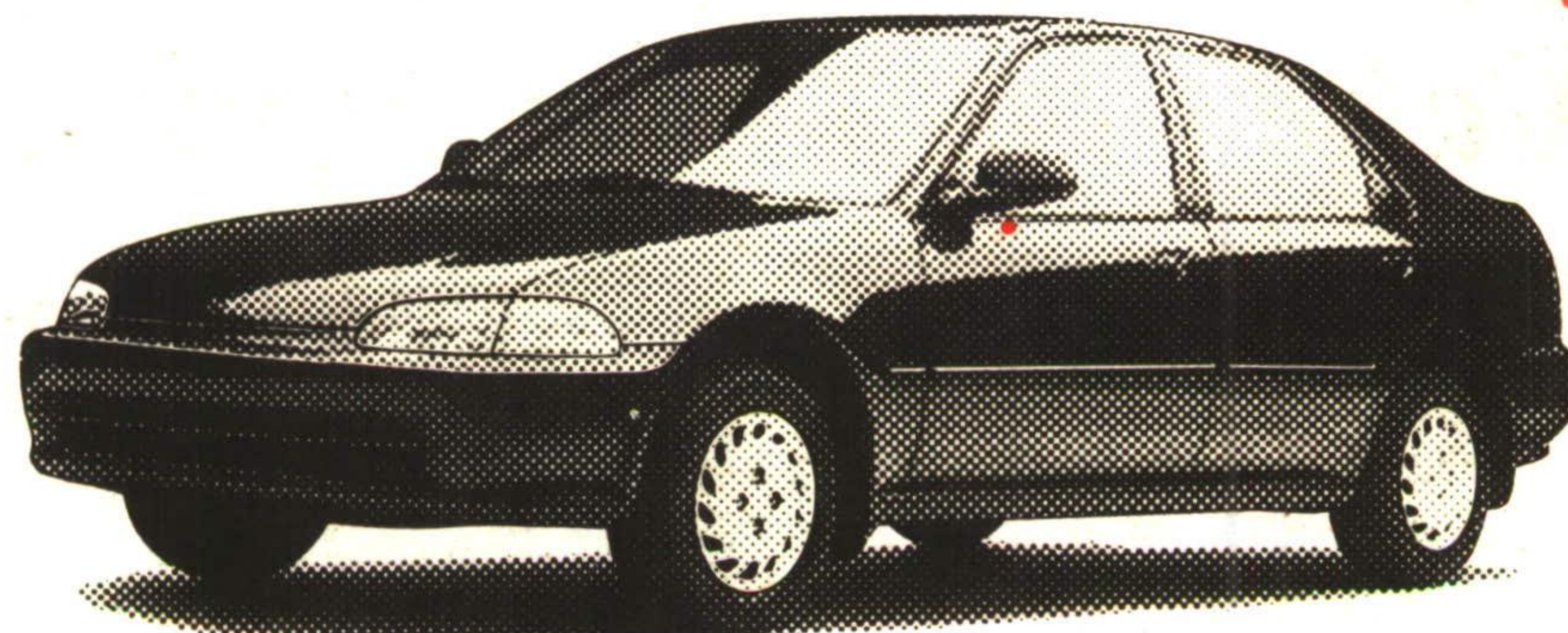
All 65 students of the Acton School of Dance are presently working hard to perfect their recital dances for the performance entitled Where Dreams Begin, which will take place at Acton District High School on Saturday, June 3, at 8 p.m. Tickets are available at the door, or through Susanne Keith and are priced \$4 for adults and \$1 for children.

**Summer school**

The Wellington County Board of Education and The Wellington County Roman Catholic Separate School Board is busy preparing for the opening of Summer School '95 for secondary school students. High school credit programs are offered at Centennial in Guelph, starting July 10 to August 9 from Grade 10 to OAC. Call 519-836-7281 for info.

**Increase Your Civic Pride.**

CFC-FREE AIR CONDITIONING, AM/FM STEREO CASSETTE, CENTRE CONSOLE ARMREST, DIGITAL CLOCK, PASSENGER SIDE VANITY MIRROR, FULL WHEEL COVERS & MORE.



**HONDA  
CANADA  
5.8%<sup>\*\*</sup>  
FINANCING**

**HONDA  
CANADA  
5.8%<sup>\*\*</sup>  
FINANCING**

**CIVIC SEDAN**

SPECIAL EDITION

From **\$14,995<sup>00</sup>**

**GEORGETOWN HONDA**

203 GUELPH ST. (HWY. #7) GEORGETOWN  
873-1818



\* Plus Ft & PDI.

\*\* Finance Rate 5.8% 24 months, 6.8% 36 months, 7.8% 48 months. No max.