

GREEN THUMB GARDENING



By CHRISTINE COLE

IN PRAISE OF GROUNDCOVERS

Groundcovers are low-growing plants used to cover the soil. Generally, the plants grow quickly to cover and protect (from erosion) the soil, and also form an attractive, dense mat. But, just as important, they are the solution to many difficult landscape problems.

Certain groundcovers will thrive in areas where other plants can't grow due to lack of light or moisture and poor soil. There is an appropriate groundcover for every situation: low growing evergreens, perennials, and herbs.

Some desirable plants, such as a lawn do not grow well in heavy shade. However, periwinkle (blue flower) Japanese Spurge, English Ivy, Cotoneaster (white flowers, red berries) and maple vines grow well in the shade. Like a lawn, they provide a green backdrop for other plants, but they also need lower maintenance. They don't require regular cutting, raking (most debris is hidden in leaves) or weeding (most weeds can't compete with their dense growth) and, other areas that are hard-to-maintain slopes, (rough terrain) can be eliminated with groundcovers. Crown vetch is excellent in this situation since it roots and grows quickly to protect the soil and its pink flowers are attractive. Other perennial groundcovers with attractive flowers include: Ajuga (blue), candytuft (white), creeping phlox (red, pink, blue or white), Lily of the Valley (white), periwinkle (purple), Snow-in-Summer (white, creeping baby's breath (pink/white). While others have attractive foliage: Hosta (striped green/yellow, green/white), Goutweed (variegated), Silver Mound (silver), Snow-in-Summer (silver), Ajuga (bronze or variegated).

Don't overlook the landscape value of groundcovers. They're practical, functional and at the same time attractive.

Every other week Christine Cole of Tuitman's Garden Centre and Landscaping, Highway 25, 1 mile south of Acton, 853-2480, will be presenting helpful tips and information to assist you in creating your garden showplace!

TUITMAN'S GARDEN CENTRE
ACTON
853-2480

BASES LOADED SPORTSPLEX

OPEN 7 DAYS A WEEK



INDOOR DRIVING RANGE

Large Bucket of Balls (approx. 80 balls) **\$3.50**

NO NEED TO FREEZE OUTSIDE!

9446 McLaughlin Rd. N. Brampton

(N. Of Queen St. S. of Williams Pkwy.)

451-2502



Downhill all the way...

North Halton District Scouting held their 5th annual Soap Box Derby last Saturday on Regional Road 22 and the 4th Line. Ian McGuffie of 1st Ashgrove road off with the overall title from among the 42 entrants. Ruth Eddols of Acton won in her class while McGuffie claimed Group 'A' honors. Sean Dale of 1st Ashgrove won the Group B title.

Photo by JEAN LAYMAN

PATIO SLABS

STEPS

RETAINING WALLS

CURBING

STEPPING STONES

GARDEN EDGERS

PAVING STONES

THINKING OF YARD

IMPROVEMENTS?

WE HAVE SOME

CONCRETE

IDEAS!

Acton Precast Concrete Limited

Quality Concrete Products Since 1963

1-800-

461-1516



April is Cancer month



DENNY'S TOURS DAY AND OVERNIGHT MOTORCOACH TOURS

Erin 519-833-9117

Acton 853-3641

Spring Blossom Tour	May 10th
Big Creek Boat Farm	May 25th
Cruise on Georgian Queen	May 27th
Blue Jays vs Cleveland	May 27th
St. Jacob's for Twilites	June 6th

Book now for Geritol Follies on June 14 and 15

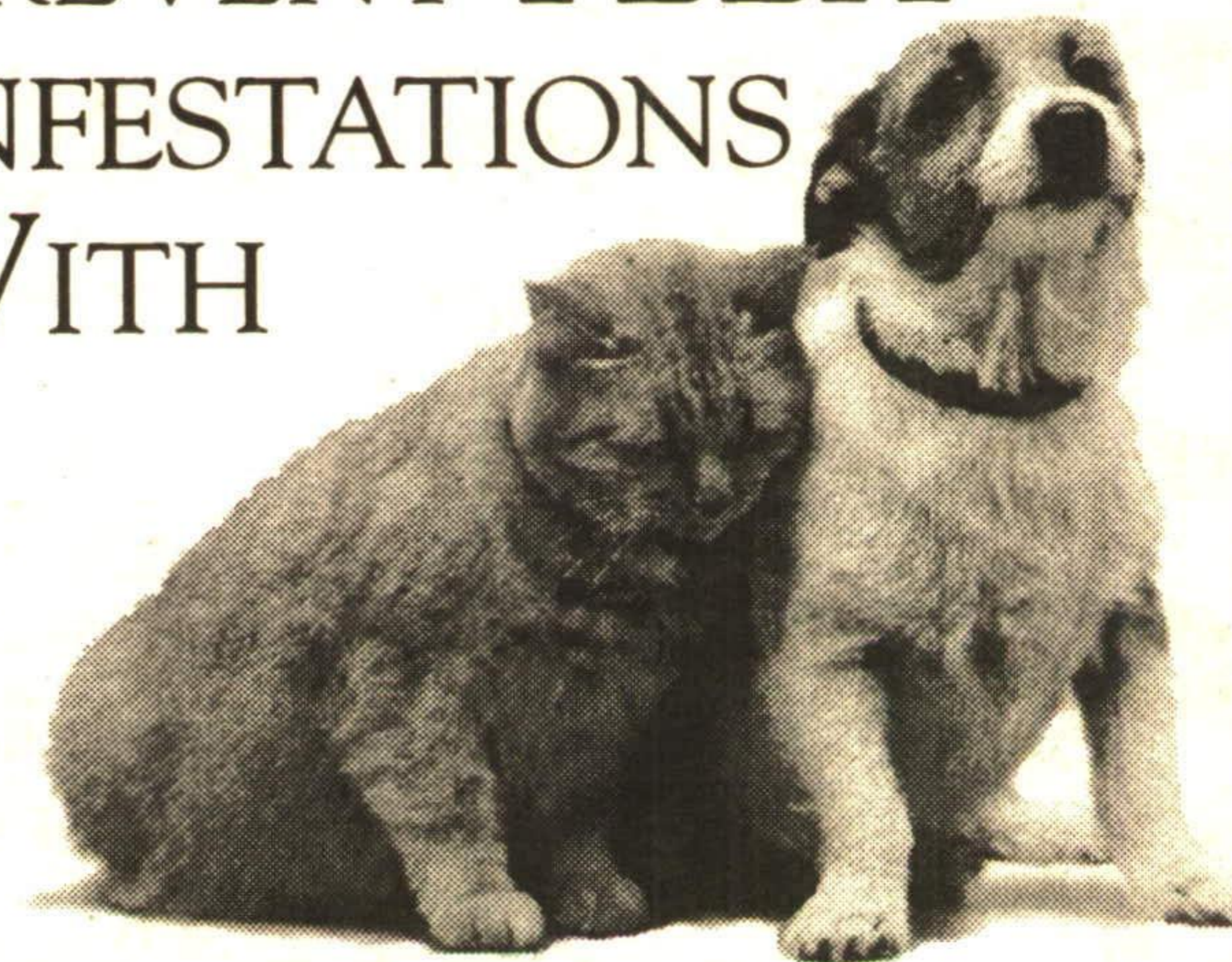
4th Annual Maifest in Frankenmuth	May 4th-5h
Ottawa Tulip Festival	May 17th-18th

Watch for Our Upcoming Tour to Boston

Call Emrys to Reserve Your Seats Today!!

Dennys Bus Lines Ltd.
R.R. #2, Acton, Ont. L7J 2L8 Reg. #01683965 & 01270158

PREVENT FLEA INFESTATIONS WITH



Ovicollar™

It's easy, non-toxic and guaranteed. Protect your pets now with full-season flea prevention for dogs or cats.

Available only from your veterinarian.

©™ Sandoz Inc.