



LINDA ELMSLIE
Sales Representative*

Wildwood Realty Inc.

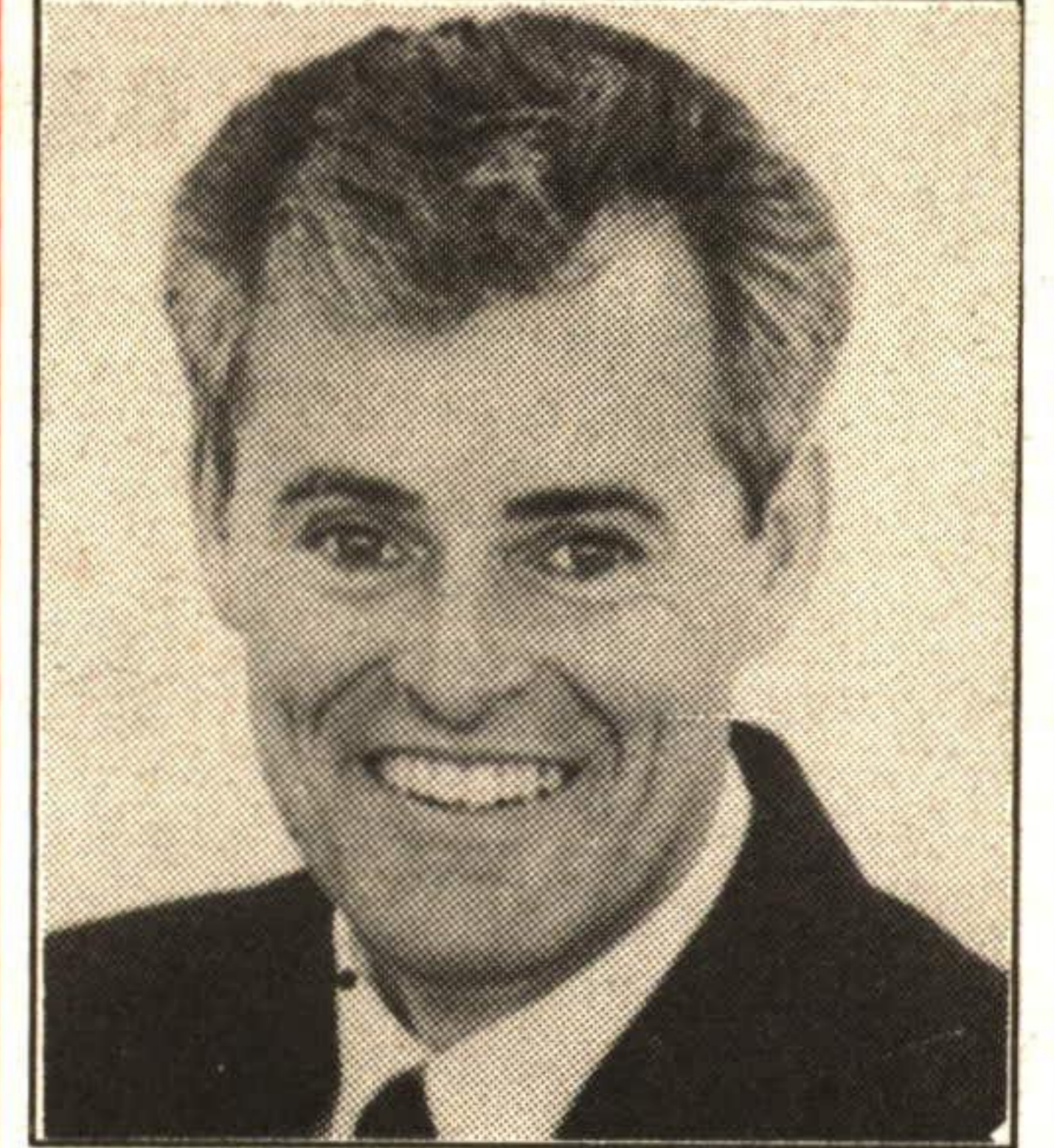
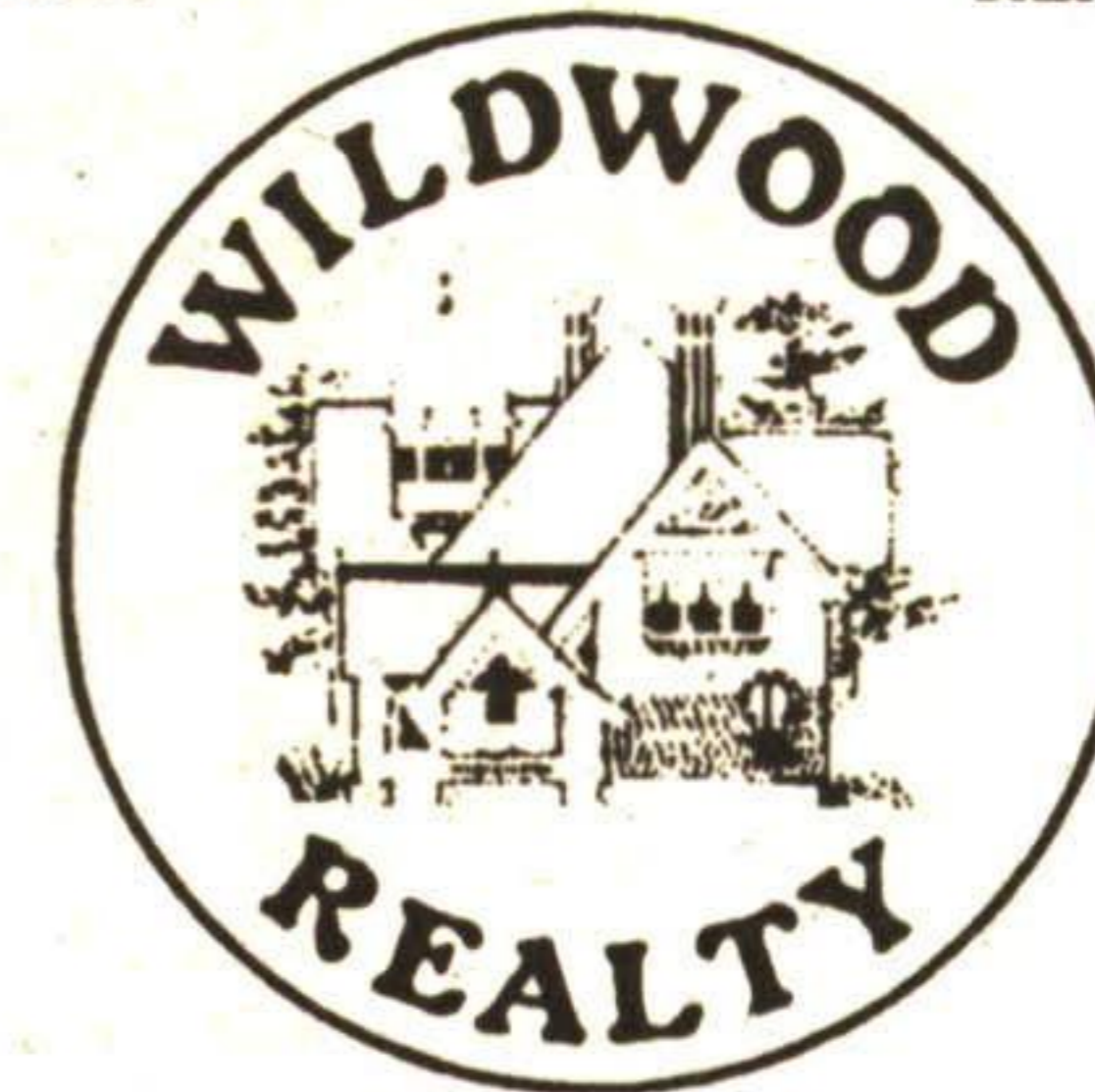
121 PRINCE CHARLES DRIVE, Georgetown

REALTOR

873-8839

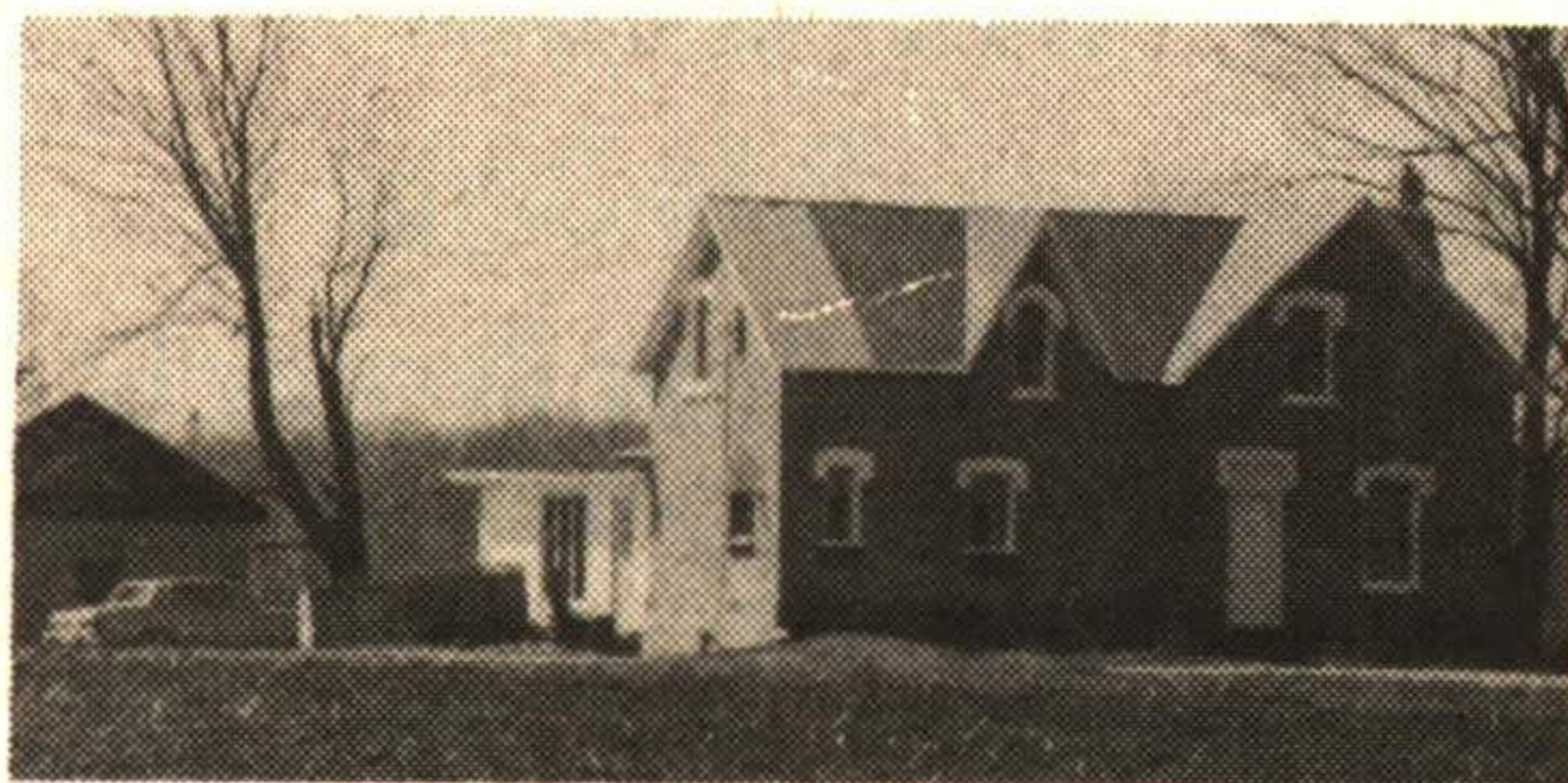
454-8706
BRAMPTON LINE

Serving Georgetown Area Since 1970



BRUCE ELMSLIE
Broker/Owner***

Your House SOLD in 90 Days or Bruce Elmslie Buys It!!!
Top Market Price Guaranteed!



200 ACRES - \$187,900

Completely renovated farm house - She'll love it!! Tile drained mostly workable - 10 acre hardwood bush, three barns, 2 silos. One hour drive north of Georgetown - Must be SOLD. WW-241



SPACIOUS HOME WITH IN-LAW SUITE

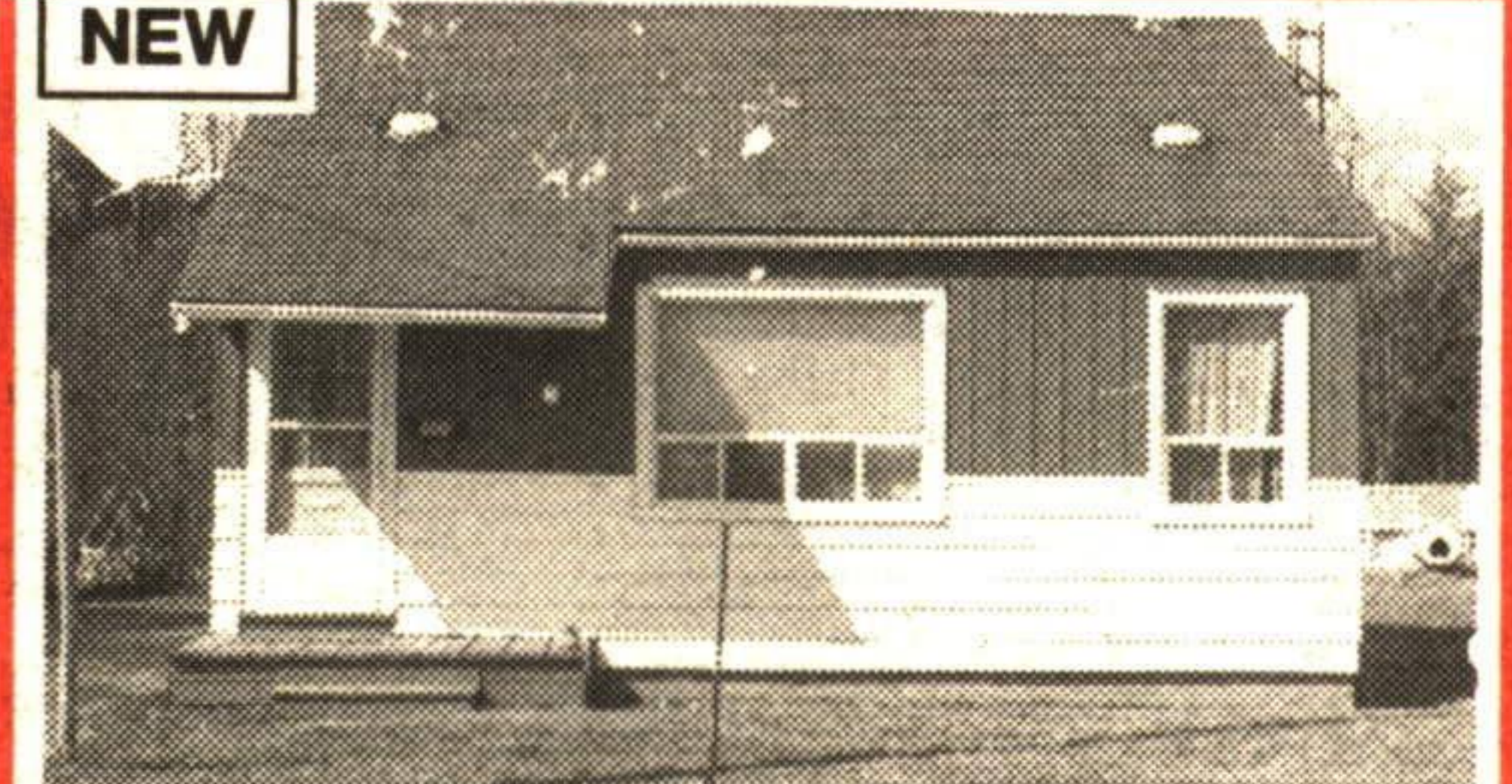
Better hurry for this one, squeaky clean inside and out, huge master bedroom, fully equipped kitchen and plenty of storage, \$157,900. WW-274



NEW PRICE

CHARMING LOG HOME

11 year old log and board & batten home with many unique features; open concept with finished loft; pine flooring; stone fireplace. Entertainment size kit. & DR; main floor laundry; barn for horses. Located on 4 very scenic acres just south of the village of Erin. Easy commuting distance to work. Close to Caledon Ski Club. School bus stops at door. Call now!! \$269,900. 873-8839 or 454-8706. WW-270



NEW

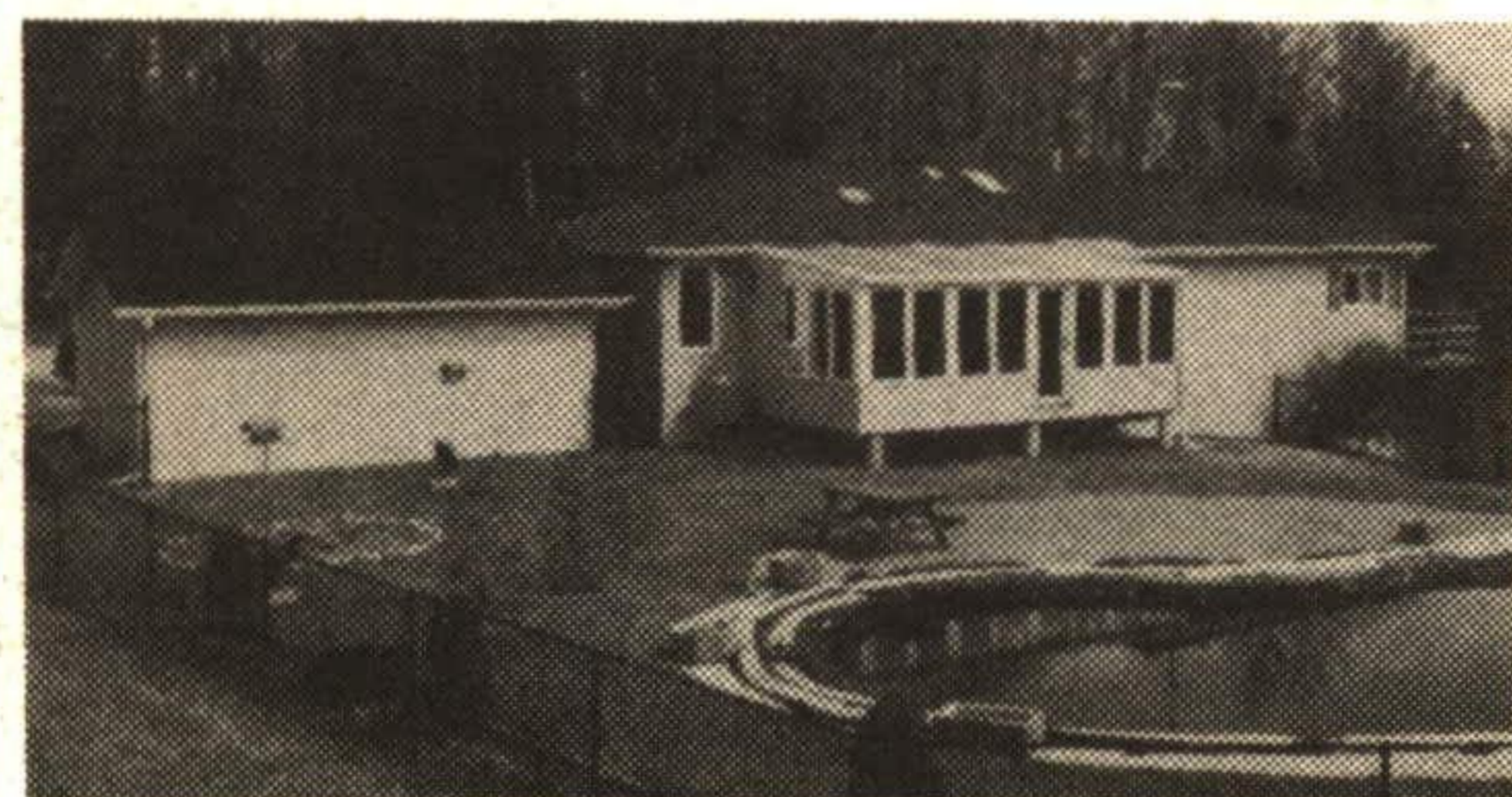
THIS IS THE ONE ...

Super detached home on a large lot, backing on to stream. Separate garage/workshop. Perfect home for first time buyers. Call Dean! \$119,900. WW-276



8-1/2 ACRES - EDGE OF TOWN

Trade in your property on this secluded "ONE OF A KIND" wooded acreage. Spotless country home. Fabulous setting with sweeping lawns and the Credit River running right by the house - nature lover's paradise. Call now for complete details. WW-225



HOBBY FARM 7 ACRES

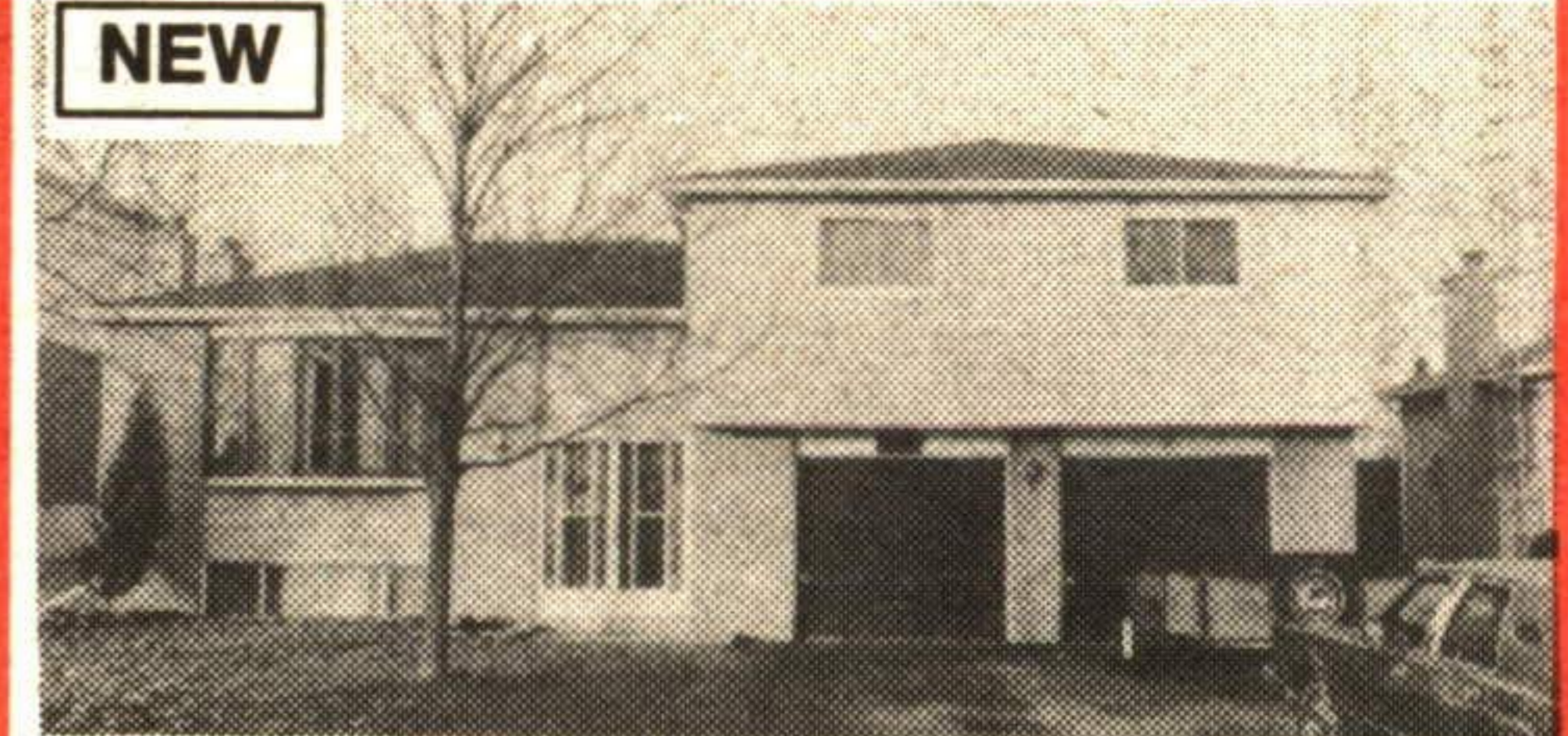
Rolling, treed acreage, great set up for horses. Neat as a pin bungalow with familyroom addition and built-in hot tub, triple glazed windows, many upgrades, finished basement with w/o. Kidney shaped inground pool and barn for the horses. First time offered. \$269,900. WW-269



NEW PRICE

ONE OF THE "BIGGEST LOTS" IN THE SUBDIVISION

Stunning 2800 sq. ft. 4 bedroom home - full of attractive features, huge kitchen. Your family will love it. Let's have a look \$249,900. WW-275



NEW

4 BEDROOM SIDESPLIT

With big fenced backyard, custom deck and kids' playhouse. Hardwood floors, 2 fireplaces, family room. This house shows great!! Access from basement to heated double garage. Call today - only \$176,900. WW-282



NEW PRICE

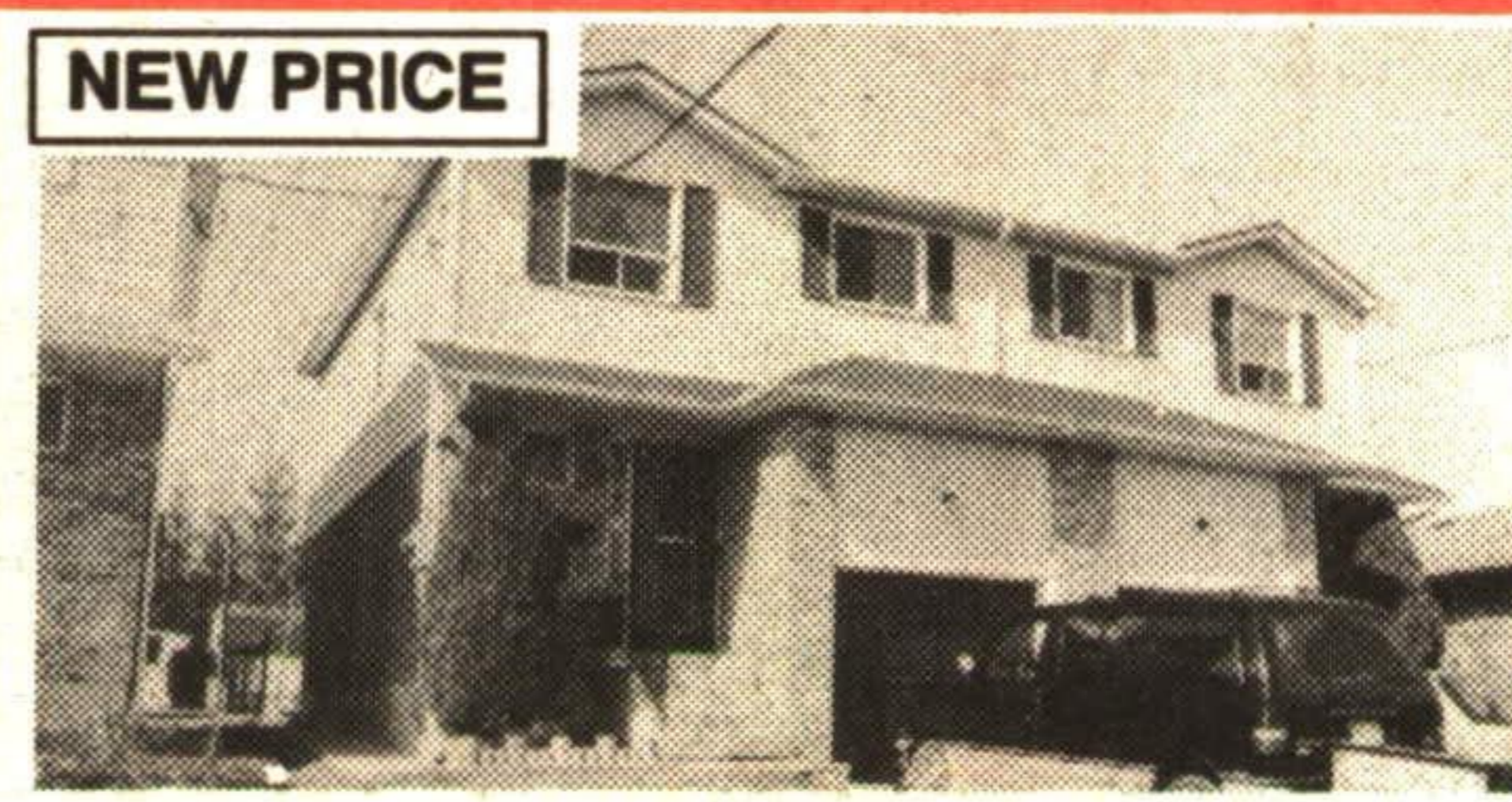
NEAR "GO TRAIN"

3 bedroom brick home. Central air, 2-4 pc. baths, central vac., inlaw apartment and 12' x 36' carport. Owner retiring. \$153,900. WW-279



LIMEHOUSE HOBBY FARM - 34 1/2 ACRES

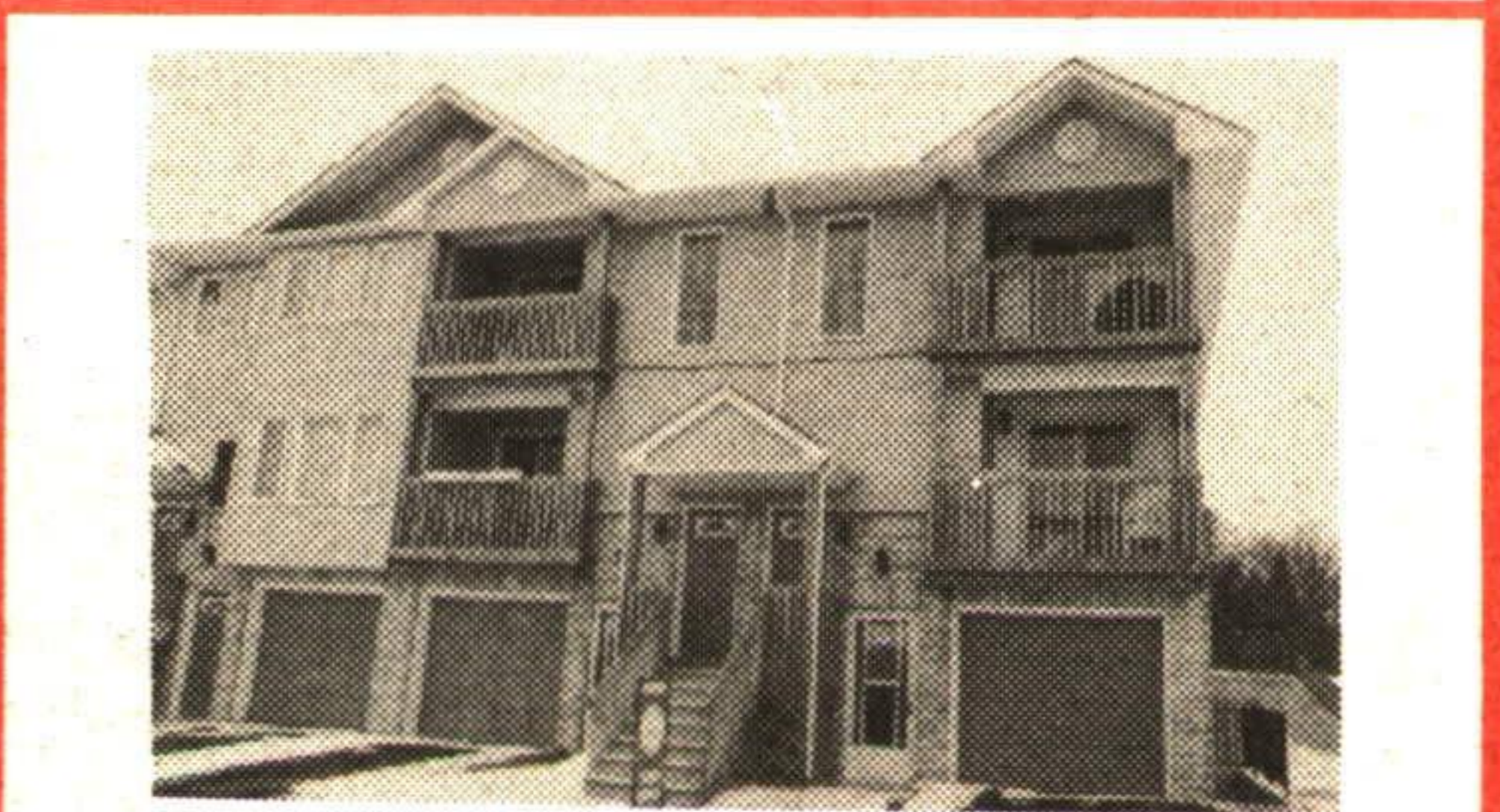
Fabulous hardwood bush! Open meadows; everflowing stream runs through property. Good 3 bedroom brick house, barn and implement building. Paved road location. Excellent set up for horses. Better hurry! \$269,900. WW-261



NEW PRICE

FIRST TIME OFFERED

Spotless 3 bedroom home, eat-in kitchen, sliding doors from dining room to large deck and fenced yard, 19' x 12' master bedroom, finished basement, 2 baths. New paved driveway. **Wow ... \$149,900.** WW-266



PRIVATE, PEACEFUL, PERFECT

2 bedroom condo with underground parking, sliding doors to covered deck, great for BBQ's. 4 appliances included, low down payment. Asking only \$98,900. WW-273



NEW

SPACIOUS BUNGALOW - HUGE LOT

New high efficiency gas furnace, central vac, oak kitchen with built-in dishwasher, living room has fireplace and sliding door from dining room, fabulous rec room. Call now, \$159,900. WW-278



PARK AREA CENTURY HOME

Come have a look at this charming home - huge well landscaped lot - big eat-in kitchen, high ceilings plus upper floor self-contained apartment. This house is in great shape. Call now! Excellent value - \$176,900. WW-242



NEW

KICK THAT FOOTBALL

Huge lot for the kids - Affordable 3 bedroom family home with hardwood floors, gas fireplace in living room, gleaming new kitchen and new windows. Better hurry!! \$142,900. WW-281



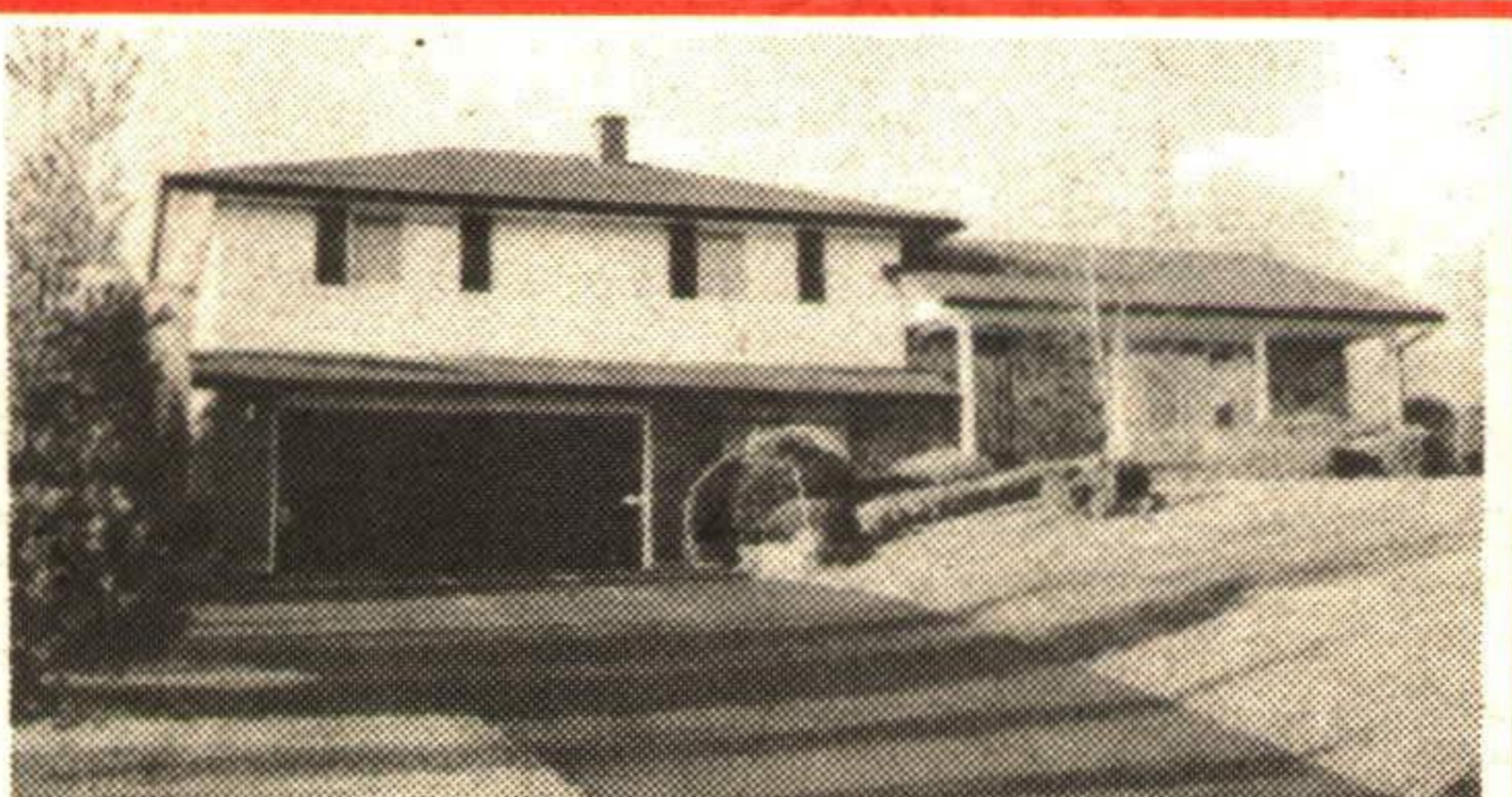
TOP CONDITION... OLDER VICTORIAN HOME

2 separate residences, loaded with charm. Hardwood floors, high ceilings, lots of cupboard space, and large fenced yards. Reduced to \$219,900. Ask for Dean. WW-230



HESLOP AREA

Gorgeous executive style home overlooking beautiful wooded ravine. Professionally landscaped yard with inground pool. Home boasts large kitchen, 3 skylights, gas fireplace and much more. Call for more details Andrea Skanes*. WW-AS



TERRA COTTA

Fabulous oak family room addition, panoramic view, spa room. Spectacular landscaped. Terra Cotta location. \$309,000. WW-263



NEW PRICE

LARGE DISTINCTIVE COUNTRY HOME

On 2+ acres with pretty creek running through the property. Manicured lawns, trees and flower beds. All new low "E" windows. Bright, fully contained 2 bedroom in-law suite, above grade with separate entrance. Asking \$279,900. Call Bruce*** today! WW-277



NEW

BETWEEN GEORGETOWN AND MILTON - 1.3 ACRES

Spacious split entrance bungalow on manicured property - very spacious rooms, entertainment size dining room, sliding doors from country sized kitchen to large deck. Finished lower level, fireplace and walkout to oversized garage. Let's have a look - \$279,900. WW-283

Bruce Elmslie is Committed to satisfaction :

When You Purchase Your Home Through Me And You Aren't Completely 100% Satisfied For Any Reason ... I'll Sell It For FREE ... It's Just That Simple,

"I wouldn't sell a house that I wouldn't buy myself"