



LINDA ELMSLIE
Sales Representative*

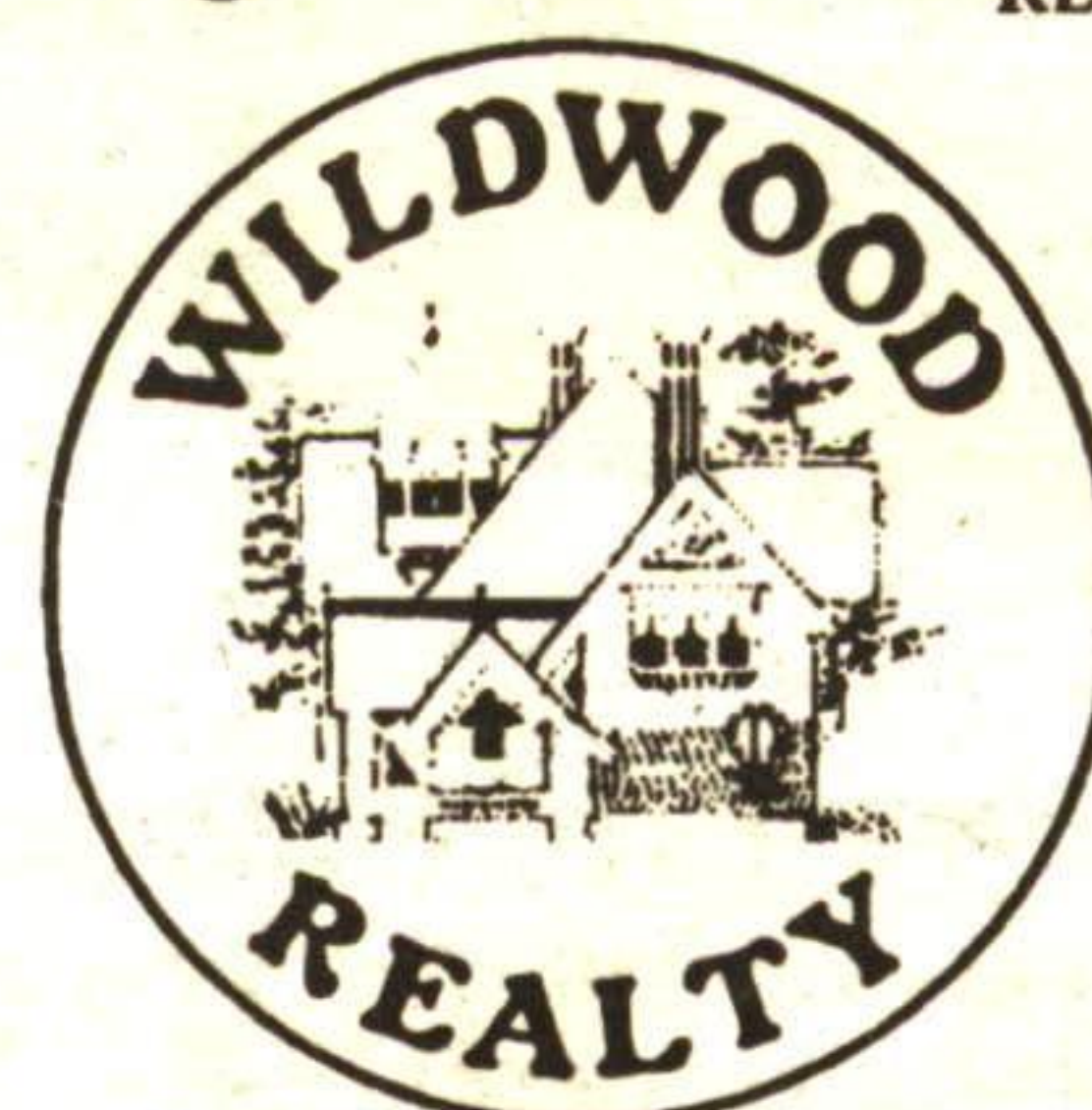
Wildwood Realty Inc.

Georgetown Office

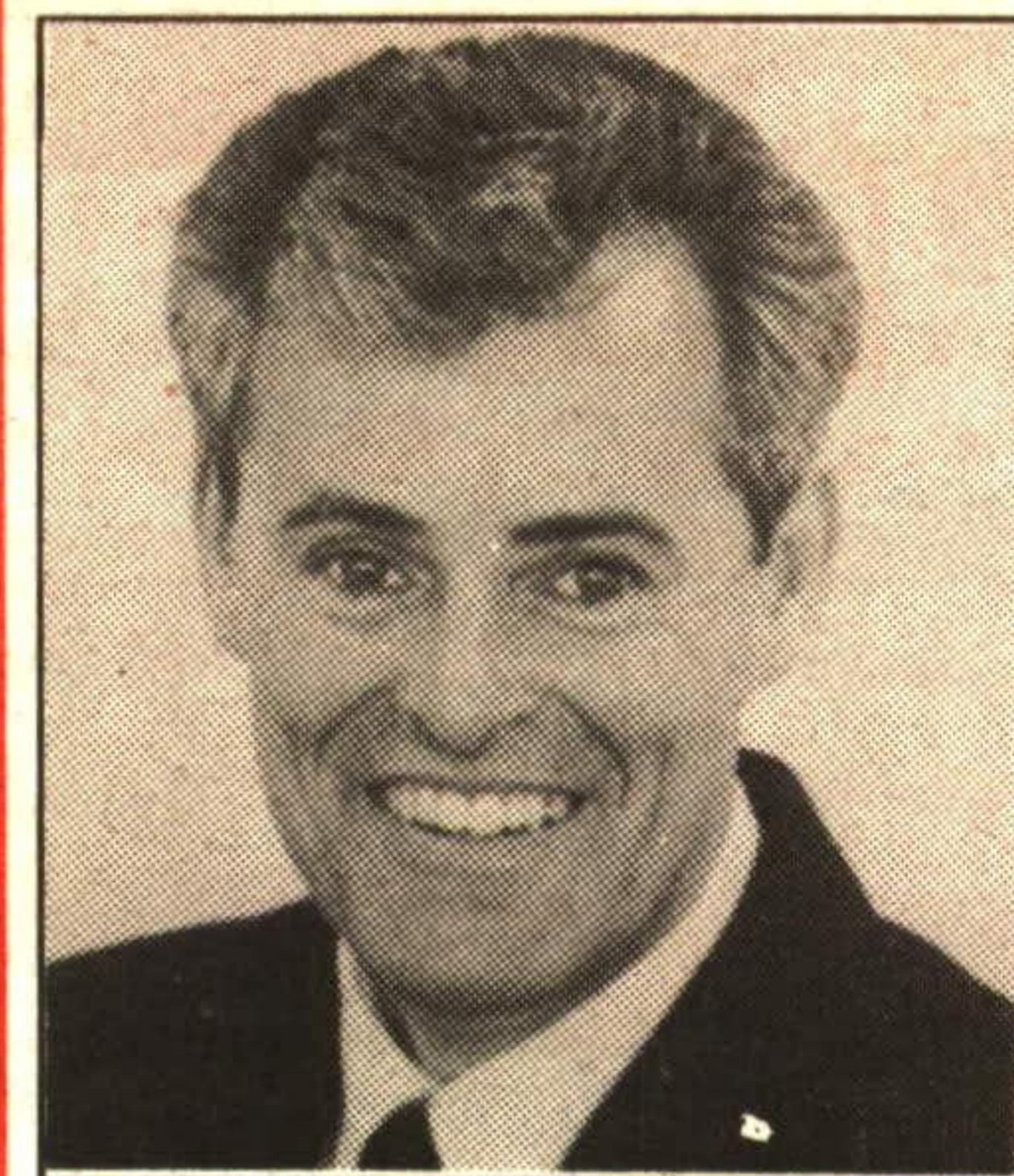
REALTOR

873-8839

454-8706
BRAMPTON LINE



Serving Georgetown Area Since 1970

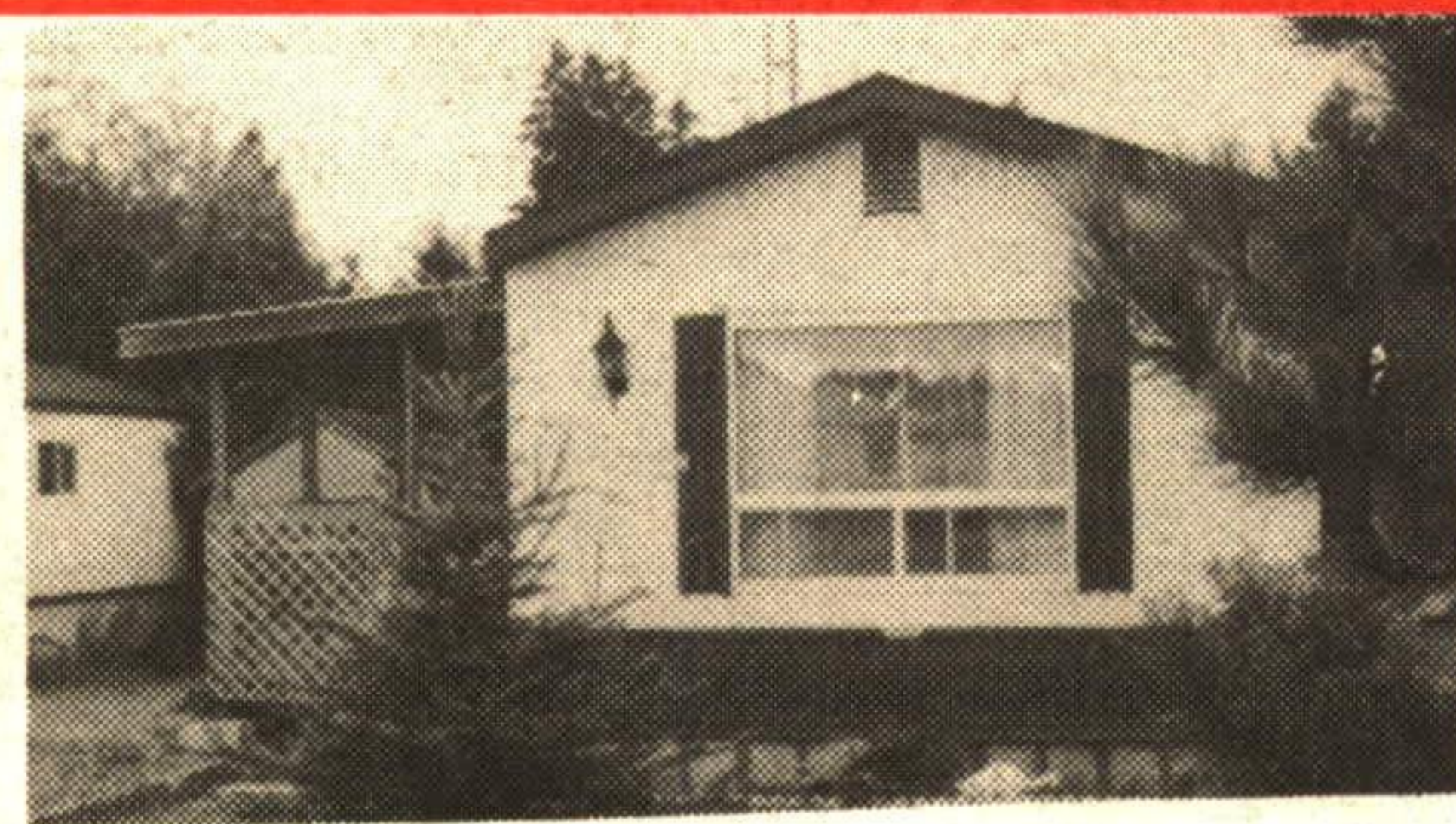


BRUCE ELMSLIE
Broker/Owner***

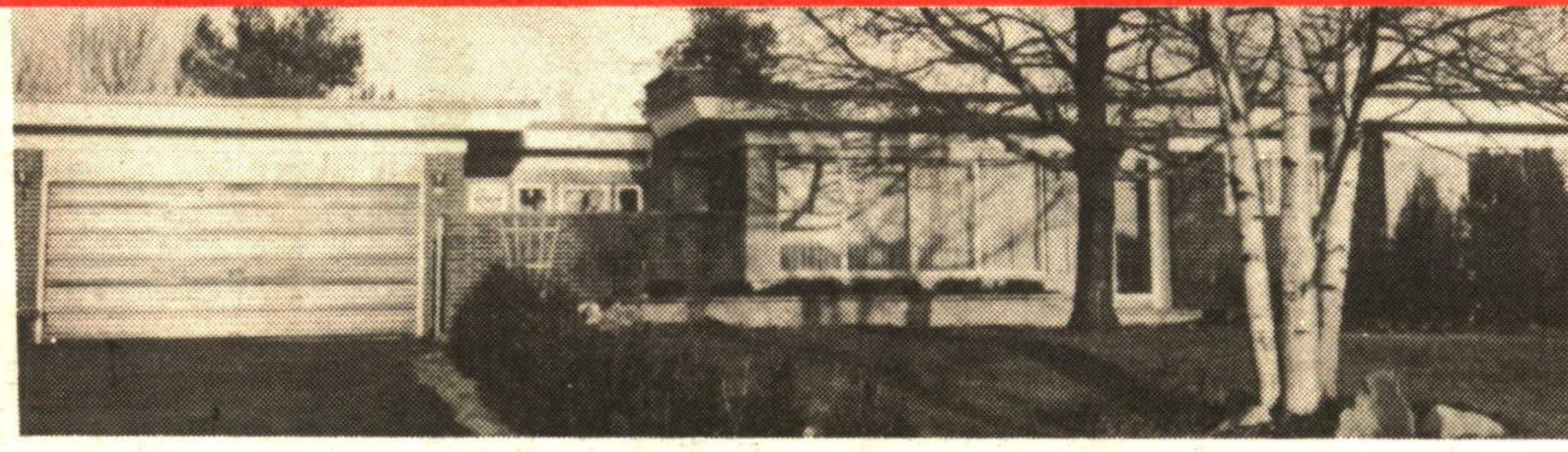
Your House SOLD in 90 Days or Bruce Elmslie Buys It!!!
Top Market Price Guaranteed!



NEW
SPACIOUS HOME WITH IN-LAW SUITE
Better hurry for this one, squeaky clean inside and out, huge master bedroom, fully equipped kitchen and plenty of storage, \$157,900. WW-274



MOVE TO STANLEY PARK!!
Spacious 3 bedroom trailer with fully equipped kitchen and generous size living room, large storage shed and wooded lot. Don't dilly-dally on this one - \$69,900. WW-253



LARGE DISTINCTIVE COUNTRY HOME
On 2+ acres with pretty creek running through the property. Manicured lawns, trees and flower beds. All new low "E" windows. Bright, fully contained 2 bedroom in-law suite, above grade with separate entrance. Asking \$284,900. Call Bruce*** today! WW-277



\$5,000 DOWN PAYMENT
Spotless end unit townhouse. Spacious rooms, 2 baths, s/d walkout to generous fenced yard & finished recreation room. Assume current mortgage. Hurry!! \$107,900. WW-268



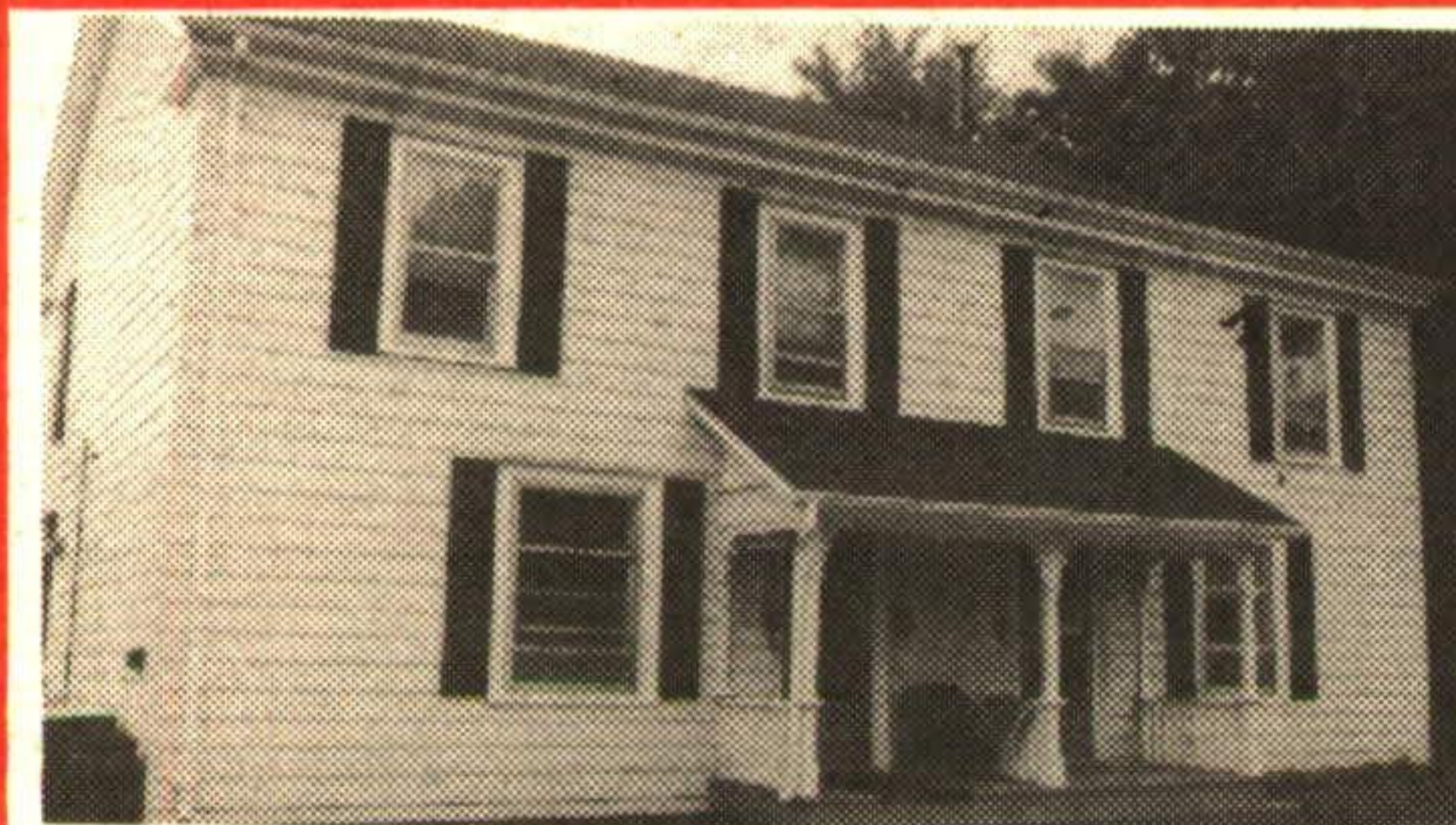
"50 ACRES - HOUSE & BARN"
Between Grand Valley & Arthur. 1350 sq. ft. 4 bedroom home has many updated features. The barn (93' x 36') is in good condition and has been used for goats. Attached 30' x 20' milk house. Excellent value at \$149,900. WW-259



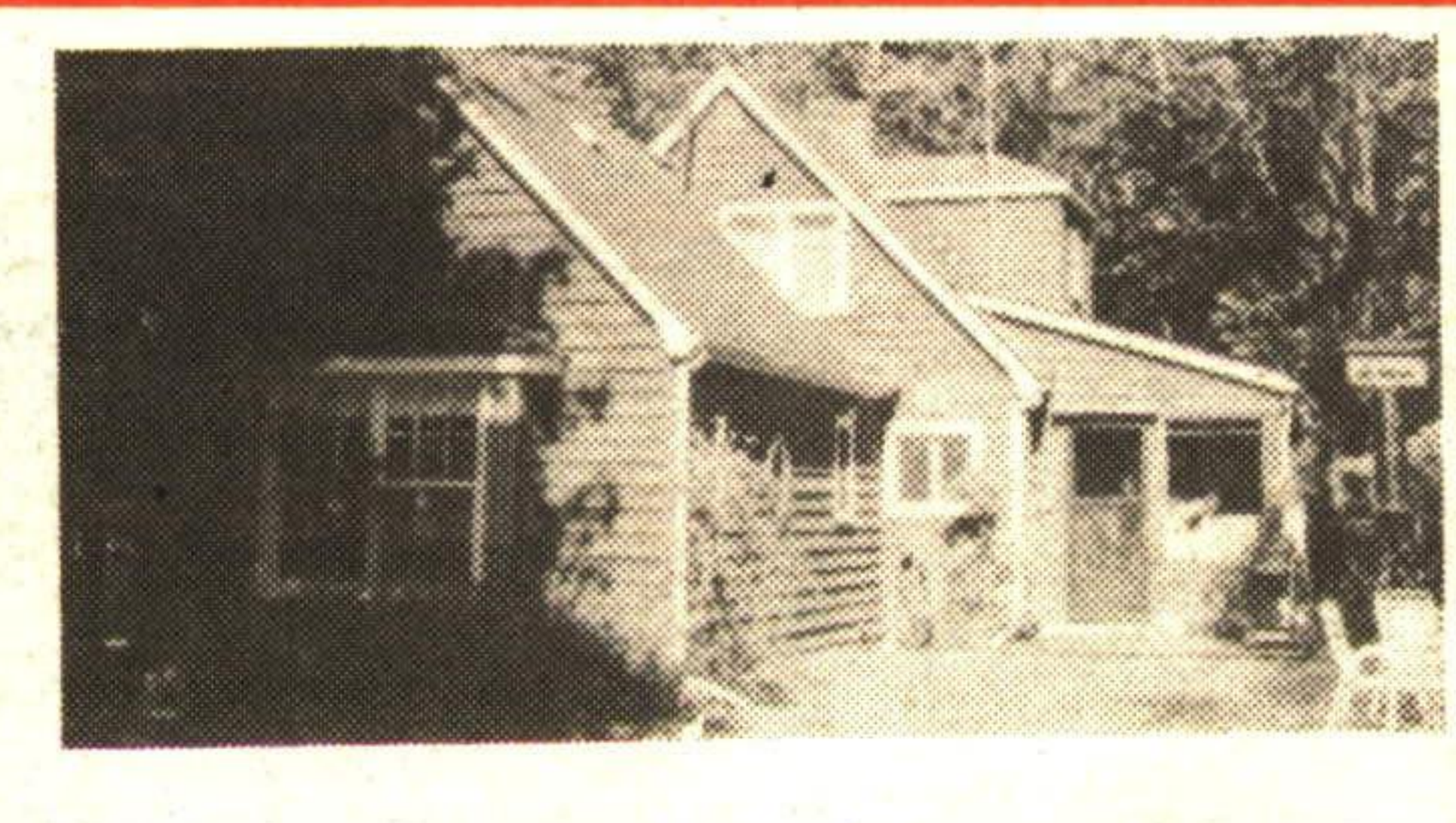
ARE YOUR RENT SLIPS SHOWING??
Don't pay another month's rent... buy this 3 bedroom townhouse with low down payment. New broadloom, eat-in kitchen, sliding door from living room to large sundeck and fenced yard. Call now!! \$99,900. WW-265



PARK AREA CENTURY HOME
Come have a look at this charming home - huge well landscaped lot - big eat-in kitchen, high ceilings plus upper floor self-contained apartment. This house is in great shape. Call now! Excellent value - \$176,900. WW-242



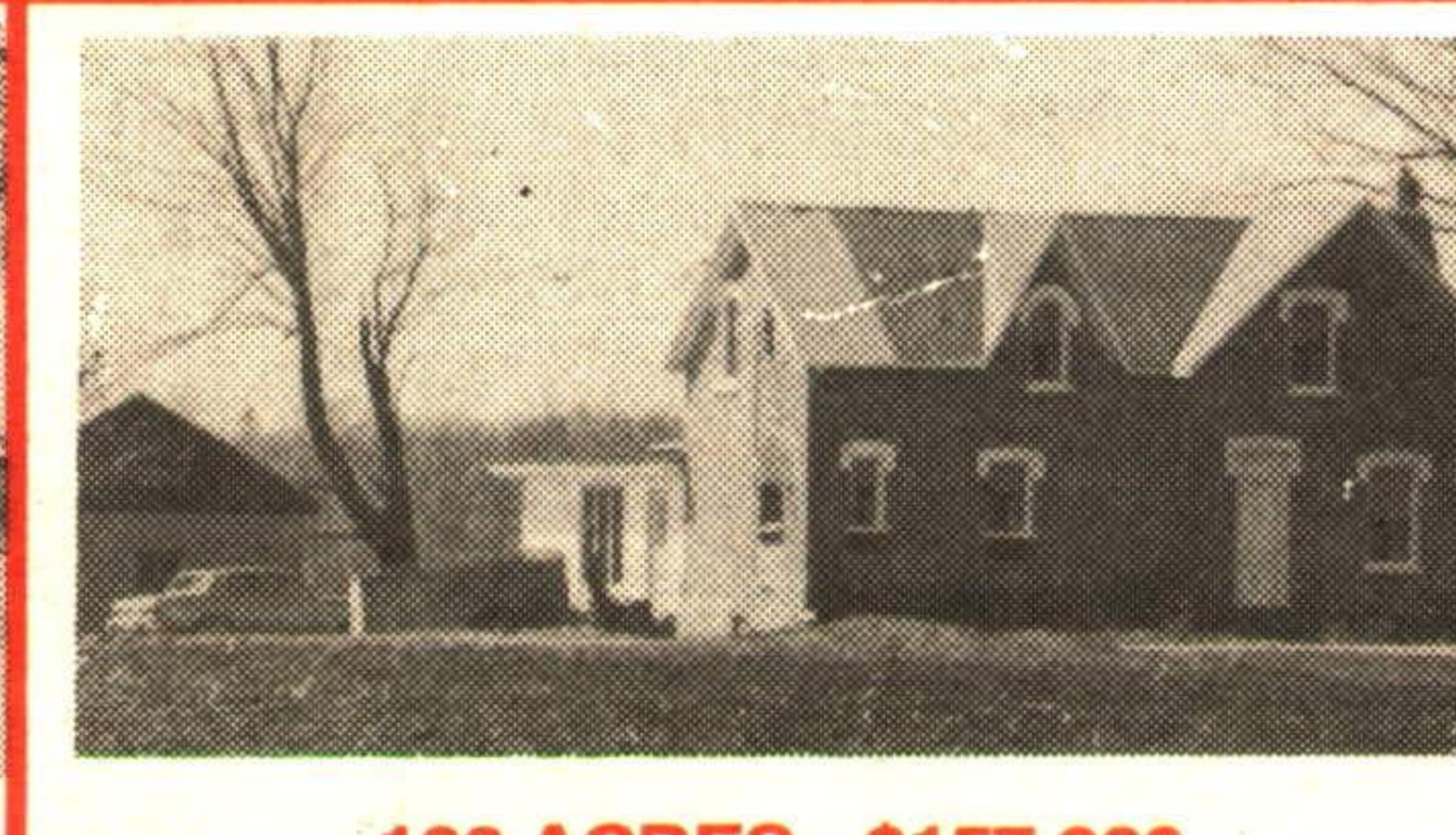
INCOME PROPERTY... 3 UNITS!
Excellent opportunity. \$179,900. Call today. Flexible closing. WW-24



8-1/2 ACRES - EDGE OF TOWN
Trade in your property on this secluded "ONE OF A KIND" wooded acreage. Spotless country home. Fabulous setting with sweeping lawns and the Credit River running right by the house - nature lover's paradise. Call now for complete details. WW-225



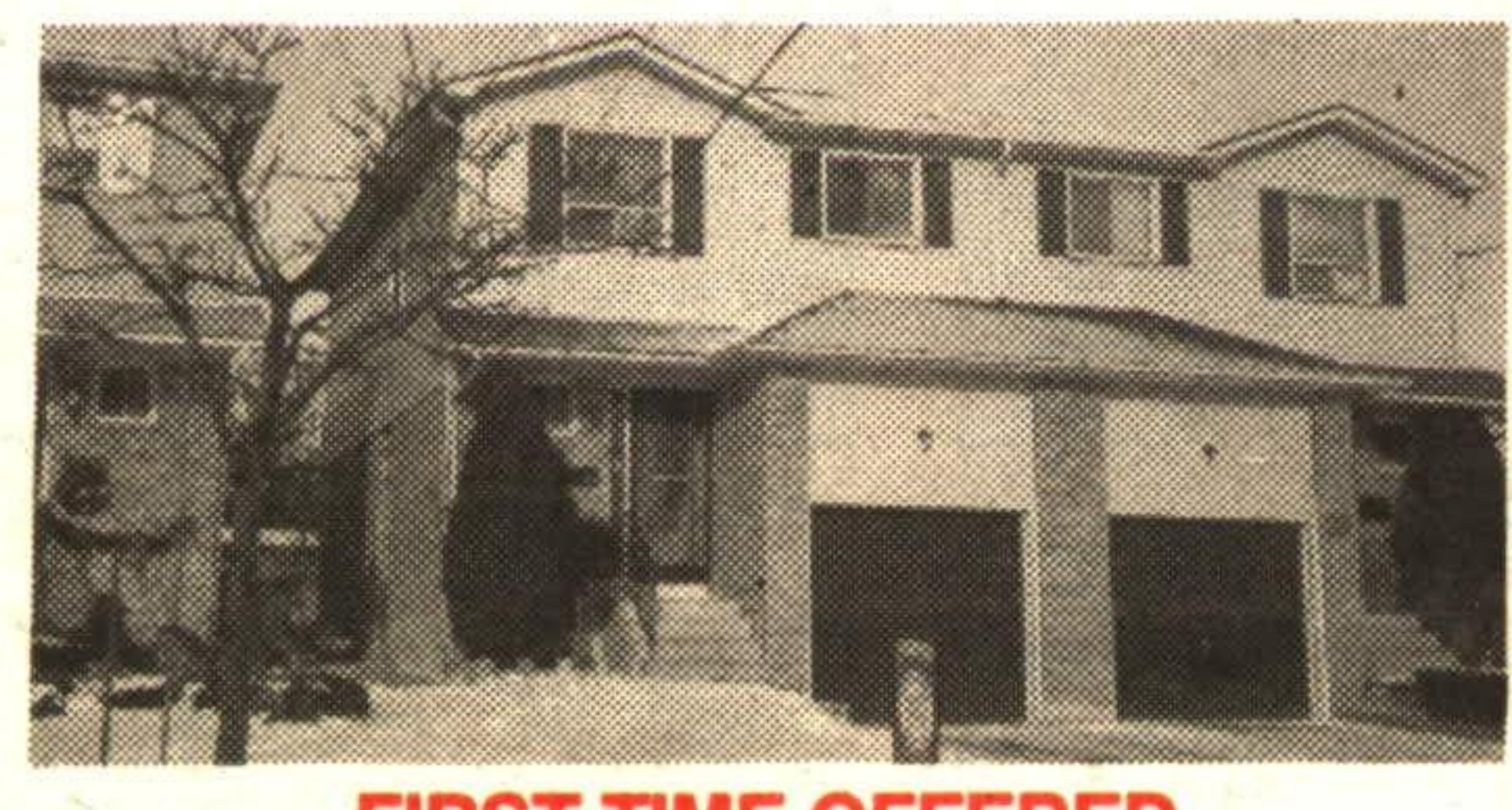
OPERATE YOUR BUSINESS FROM HOME...
Fabulous custom designed and built - 2400 sq. ft. luxury home, 2 fireplaces, 3 bathrooms, completely finished basement, stunning oak gourmet kitchen with 4' skylight, huge living room & dining room, 20 x 40 inground pool, 930 sq. ft. building for your business, paved parking, (FAG heating... \$500/94), sweeping lawns and gardens. Edge of town location - MUST BE SEEN - \$449,900. WW-264



100 ACRES - \$157,900
Completely renovated farm house - She'll love it!! Tile drained mostly workable - 5 acre hardwood bush, three barns, 2 silos. One hour drive north of Georgetown - Must be SOLD. WW-241



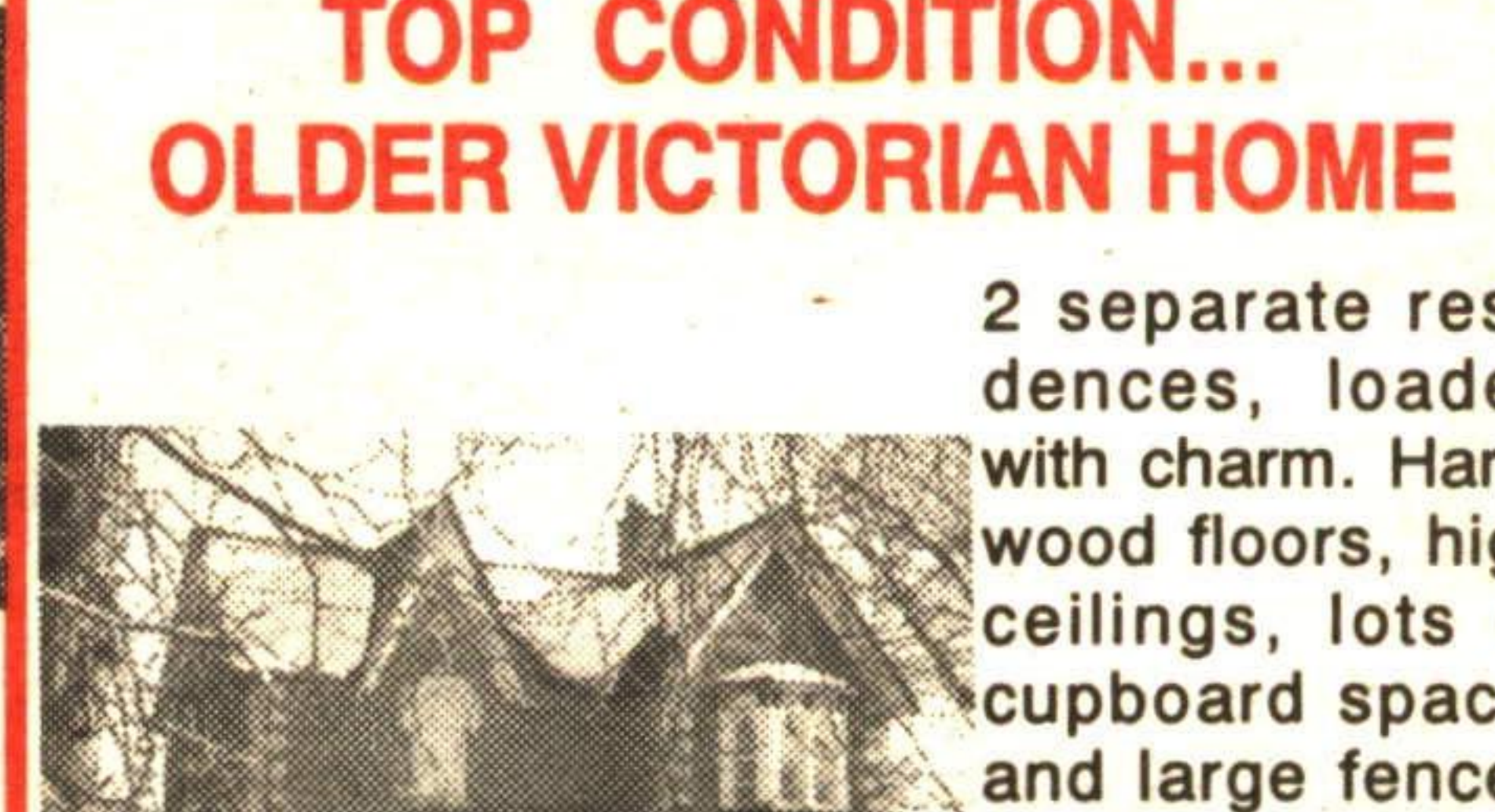
NEW
PRIVATE, PEACEFUL, PERFECT
2 bedroom condo with underground parking, sliding doors to covered deck, great for BBQ's. 4 appliances included, low down payment. Asking only \$98,900. WW-273



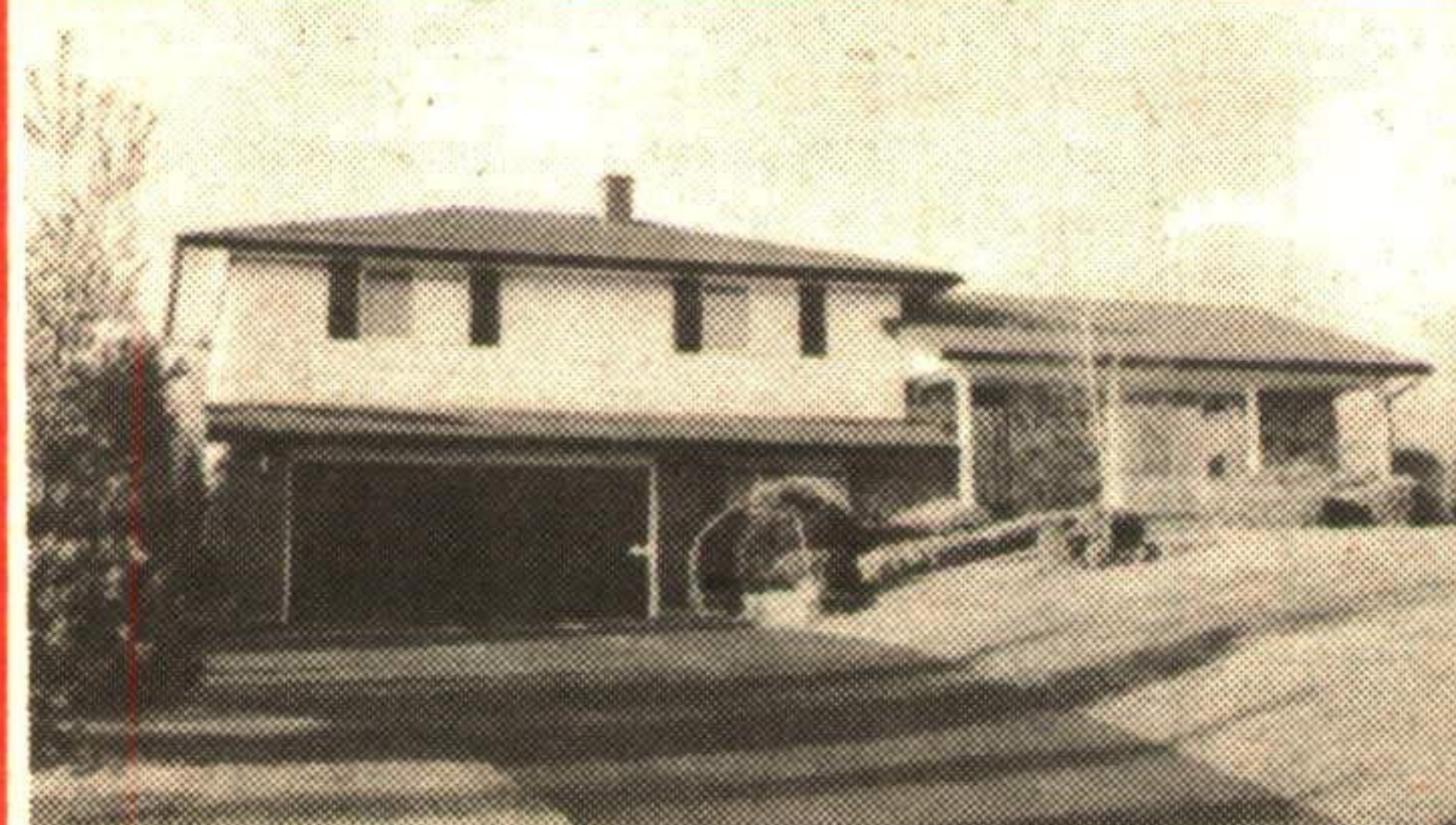
FIRST TIME OFFERED
Spotless 3 bedroom home, eat-in kitchen, sliding doors from dining room to large deck and fenced yard, 19' x 12' master bedroom, finished basement, 2 baths. New paved driveway. Call today... WW-266



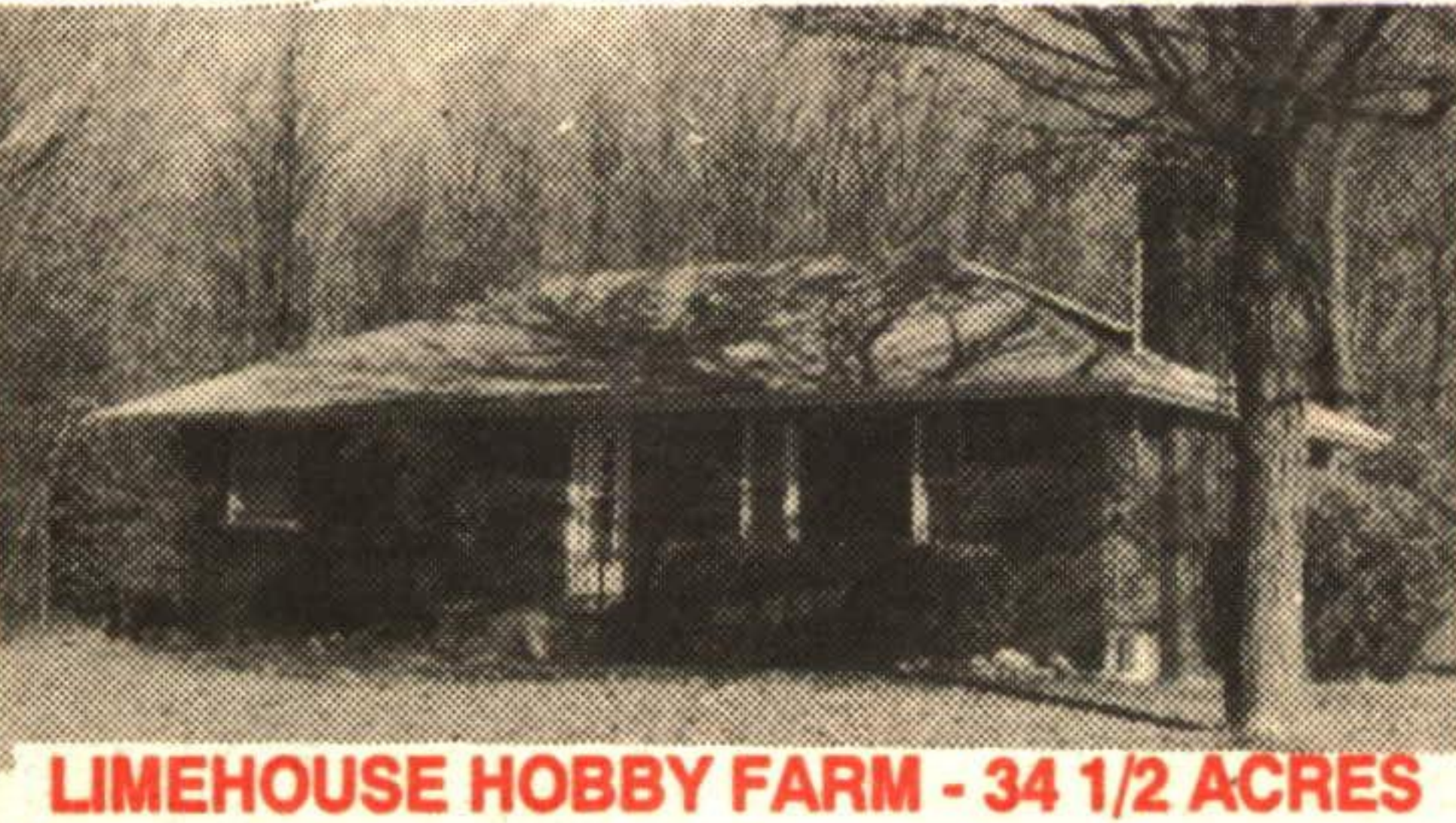
CHARMING LOG HOME
11 year old log and board & batten home with many unique features; open concept with finished loft; pine flooring; stone fireplace. Entertainment size kit. & DR; main floor laundry; barn for horses. Located on 4 very scenic acres just south of the village of Erin. Easy commuting distance to work. Close to Caledon Ski Club. School bus stops at door. Call now!! \$289,900. 873-8839 or 454-8706. WW-270



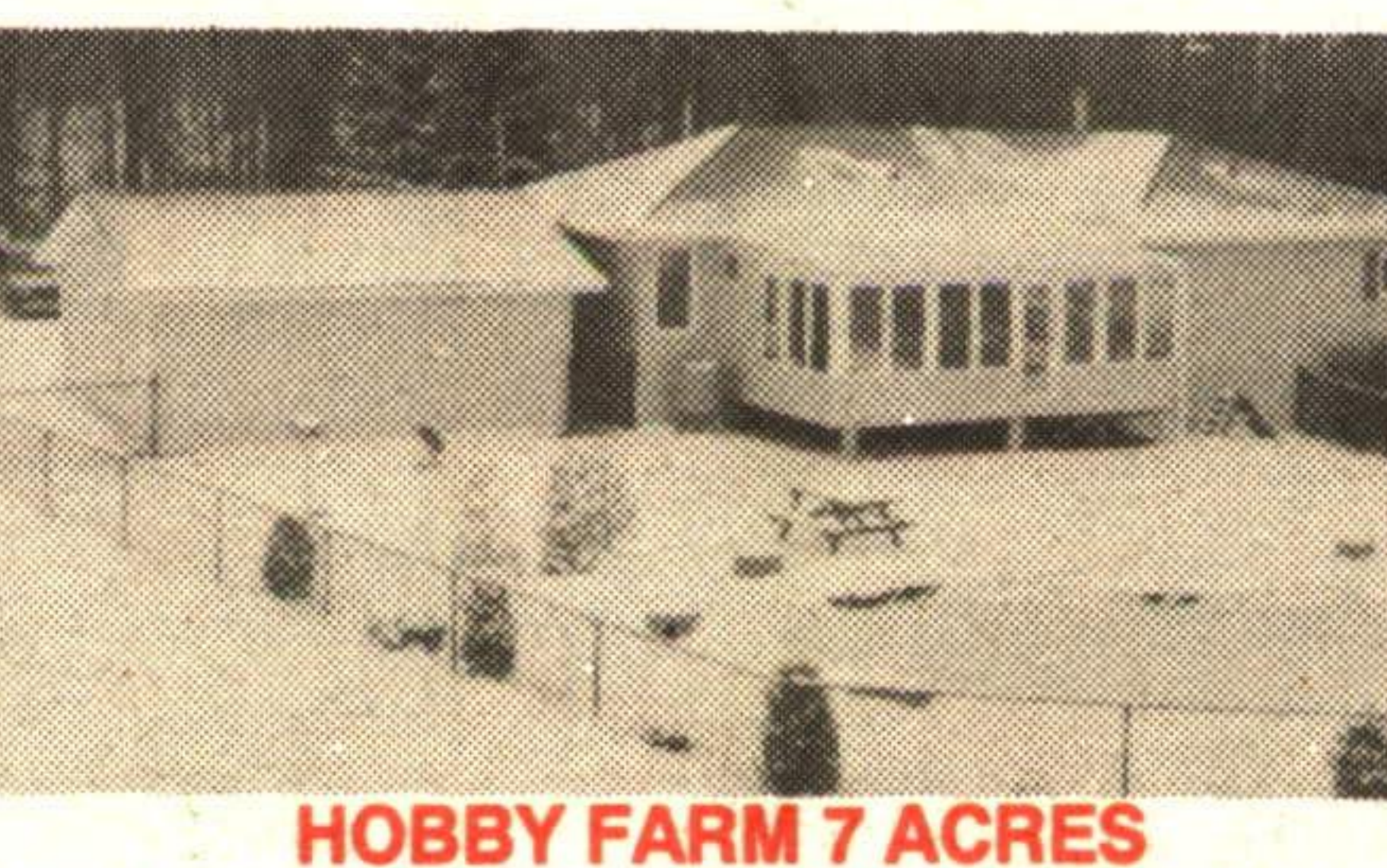
TOP CONDITION... OLDER VICTORIAN HOME
2 separate residences, loaded with charm. Hardwood floors, high ceilings, lots of cupboard space, and large fenced yards. Reduced to \$219,900. Ask for Dean. WW-230



CUSTOM COUNTRY HOME
Fabulous family room addition, panoramic view, spa room. Terra Cotta location. \$319,900. WW-263



LIMEHOUSE HOBBY FARM - 34 1/2 ACRES
Fabulous hardwood bush! Open meadows; everflowing stream runs through property. Good 3 bedroom brick house, barn and implement building. Paved road location. Excellent set up for horses. Better hurry! \$269,900. WW-261



HOBBY FARM 7 ACRES
Rolling, treed acreage, great set up for horses. Neat as a pin bungalow with familyroom addition and built-in hot tub, triple glazed windows, many upgrades, finished basement with w/o. Kidney shaped inground pool and barn for the horses. First time offered. \$269,900. WW-269



NEW
ONE OF THE "BIGGEST LOTS" IN THE SUBDIVISION
Stunning 2800 sq. ft. 4 bedroom home - full of attractive features, huge kitchen. Your family will love it. Let's have a look \$259,900. WW-275

Bruce Elmslie is Committed to satisfaction :

When You Purchase Your Home Through Me And You Aren't Completely 100% Satisfied For Any Reason ... I'll Sell It For FREE ... It's Just That Simple,

"I wouldn't sell a house that I wouldn't buy myself"