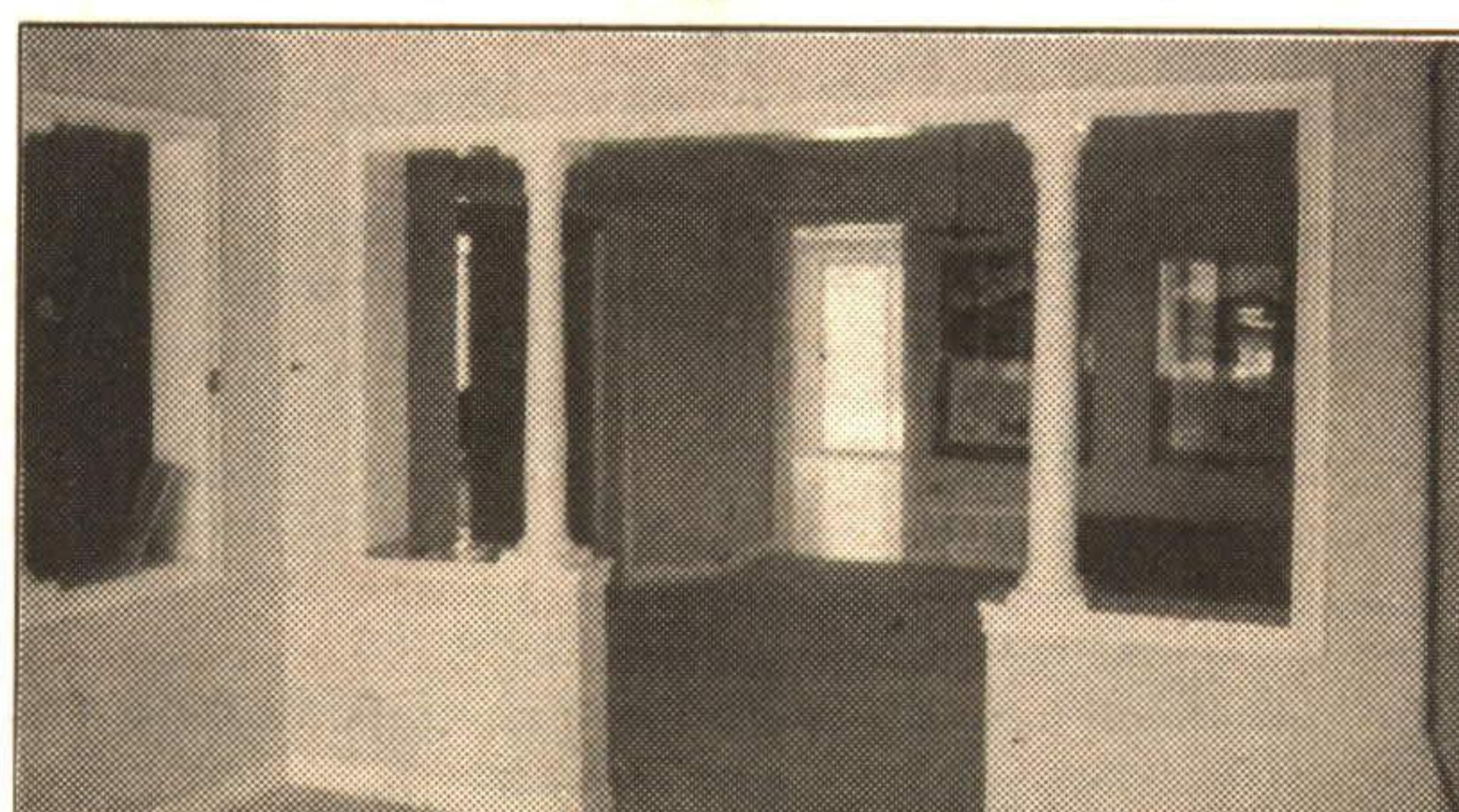


PARKSIDE ESTATES

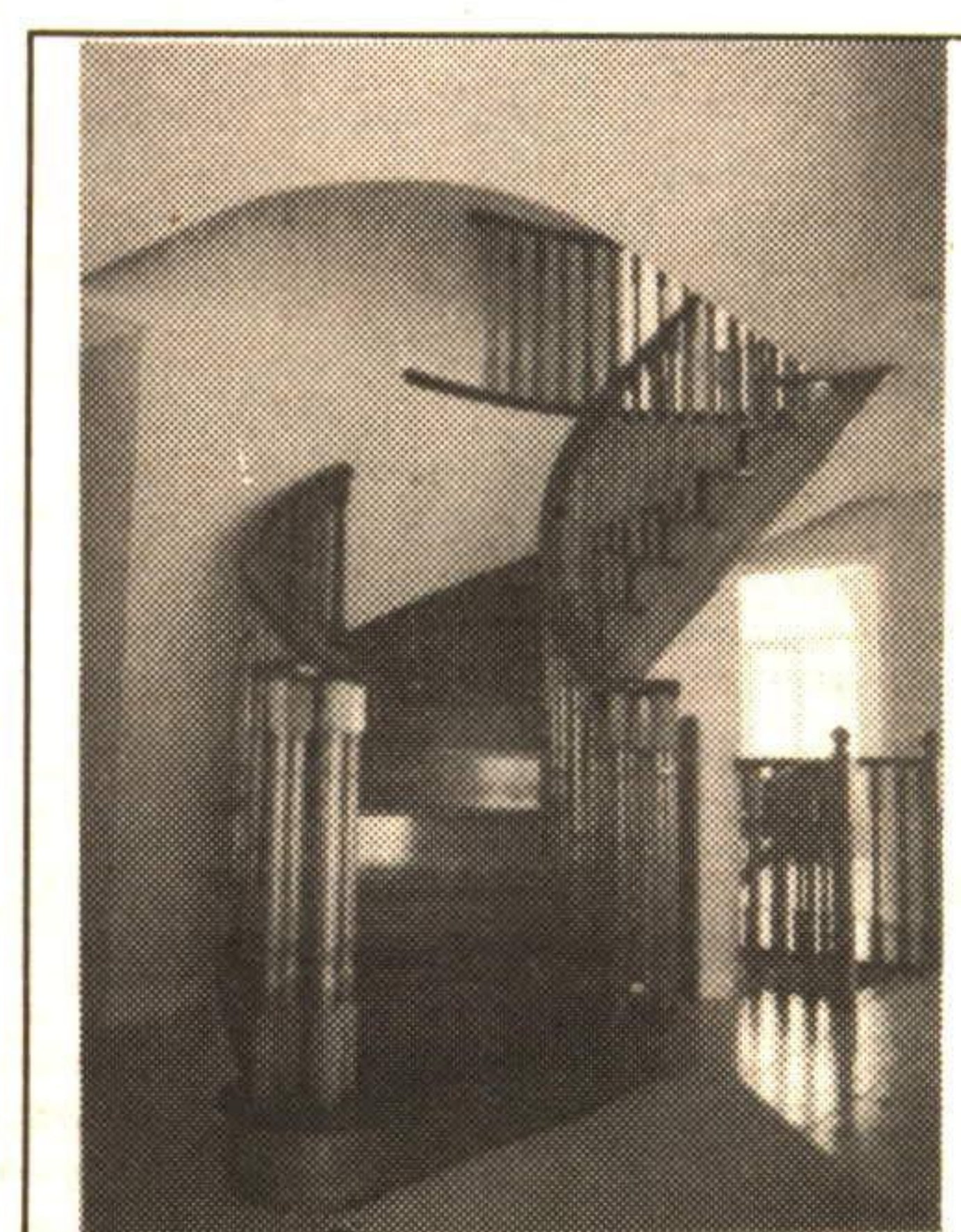
Luxury Living in the "PARK AREA"



Olive
3006 sq. ft.



**Formal Living
& Dining Room**



**The
"Grand
Showcase"**

ALL THE FEATURES YOU ARE LOOKING FOR:
Oak Stairs & Rails; Casement Windows; Ceramic Floors;
All Clay Brick; Gas Fireplace

NOW UNDER CONSTRUCTION

**VISIT OUR MODEL
HOME AT**

67 SAMUEL CRES.

**CALL
873-7609**

SATURDAYS & SUNDAYS 12-5 p.m. or by appointment

HOMES IN ALL PRICE RANGES & SIZES



**ONE OF A
KIND**

Attractive & tastefully finished raised bungalow with possible in-law suite. Great room with 2 way fireplace. Asking \$209,900. Call Doug** & Dianne**.

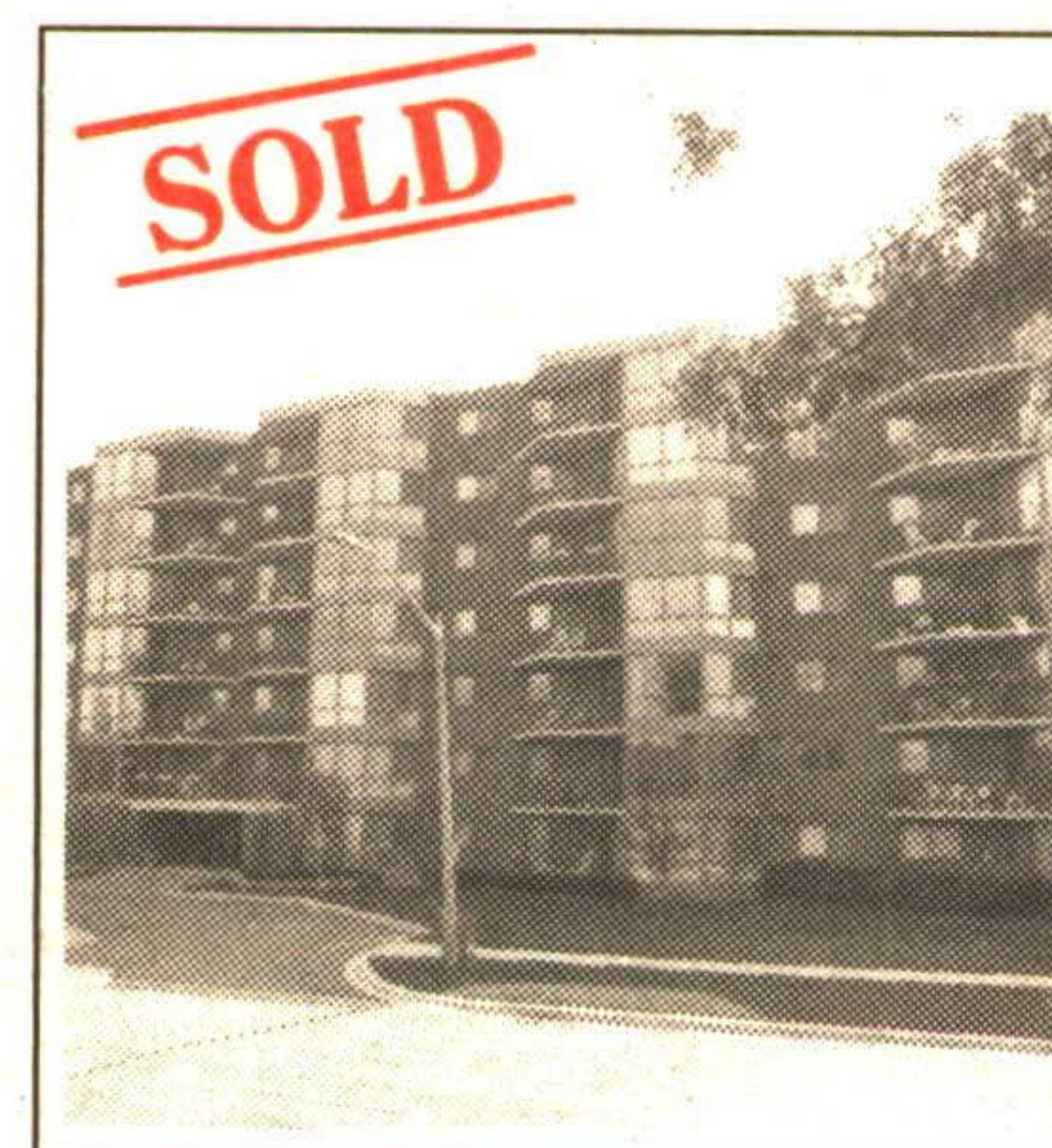
95-2-133



OPEN HOUSE

Sunday, Feb. 26th, 2-4 p.m.
176 Rexway Drive

94-2-179



**CALLING
RETIREEES**

I'm a one bedroom with a den just waiting for new owners to enjoy our facilities included in this lovely building, sauna, hot tub, exercise room plus more. Call Doug** & Dianne**.

95-2-161



**TWO FOR
THE PRICE
OF ONE**

Older home with charming character, zoned commercial with bonus rental apartment in separate building. Call Doug** & Dianne**.

94-2-587



**CUTE
&
COSY**

Lovely three bedroom Phase III townhouse, 1-1/2 bathrooms, rec room, large backyard with lots of room for the kids to play. Call Dianne** & Doug**.

95-2-154

Call
**Your Hometown
Real Estate
Professionals**

**DOUG &
DIANNE
PENRICE****

Associate Brokers**



877-5165

**ARTHUR F.
JOHNSON &
ASSOCIATES
LTD., REALTOR**