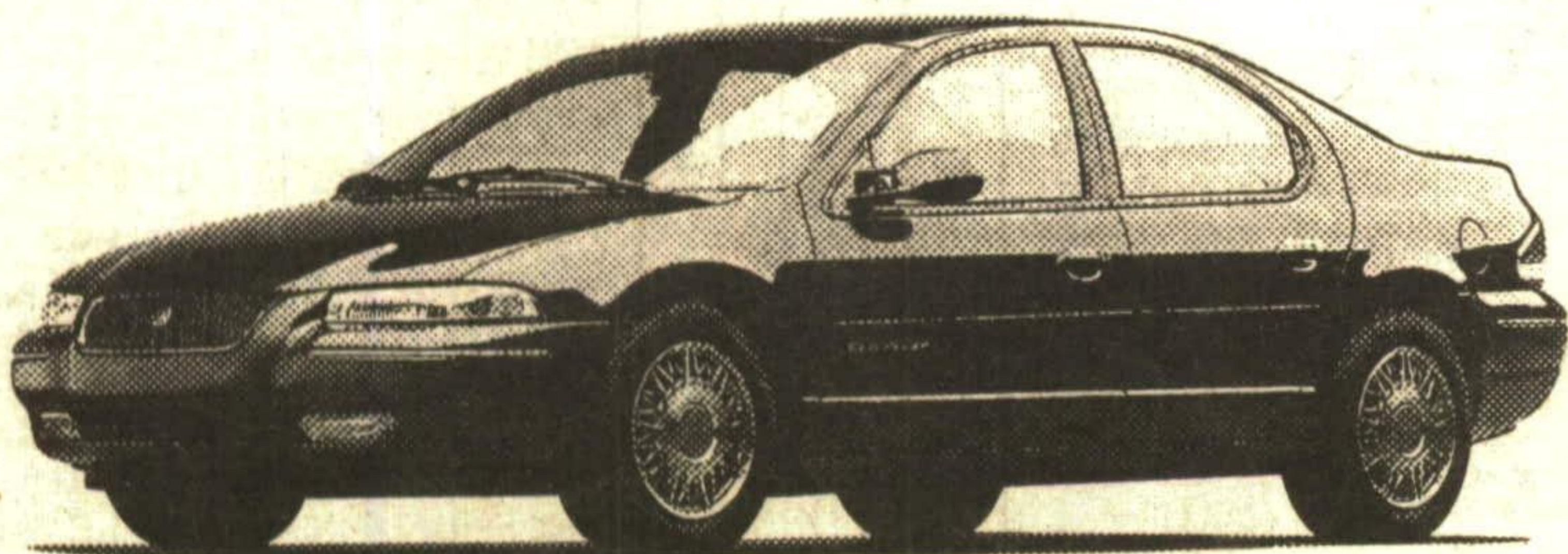


# PRICES ARE DON'T MISS OUT!!

1995 CIRRUS

1995 INTREPID

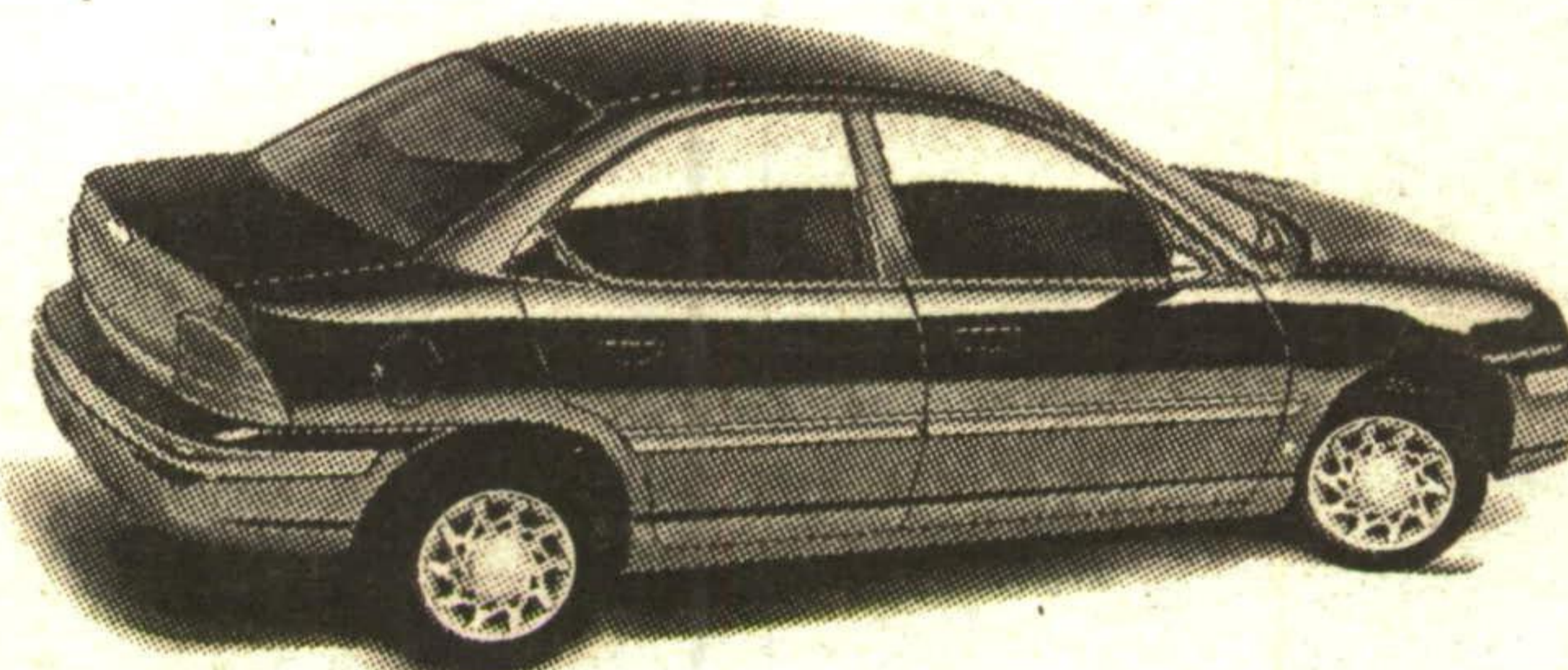


**BEST NEW FAMILY CAR  
OF 1995**

AS LOW AS **\$19,988\***

1995 CHRYSLER MINI-VAN

1995 NEON HIGHLINE



AS LOW AS **\$17,988** OR **8.9%\***  
FINANCING

AS LOW AS **\$13,888** OR **8.9%\***  
FINANCING

**\*SEE DEALER FOR DETAILS**

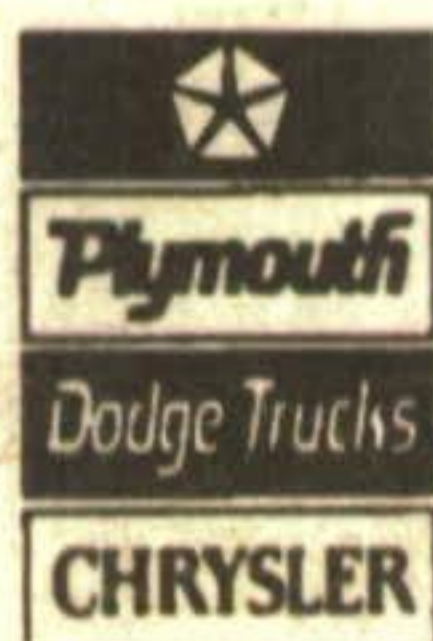
## GEORGETOWN CHRYSLER (1993) LTD.

336 GUELPH ST., GEORGETOWN

877-0149

877-5108

TOR. 846-1170



**A DEALER YOU CAN BELIEVE IN.**



FALLING !!