

LIFESTYLES BY



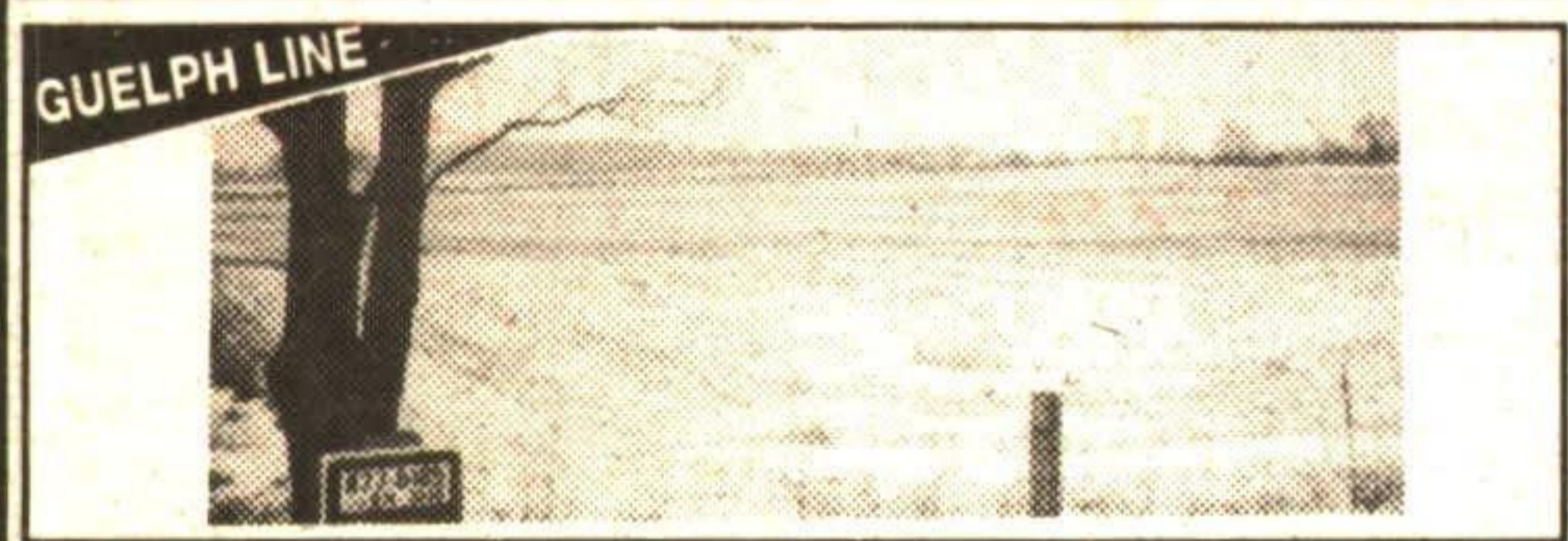
ERIN
 Patio door walkout from basement level to yard and treed conservation land. Walkouts on main level from master suite and kitchen to huge deck. Central air, double garage and listed at \$189,900. 94-2-629

OVERLOOKS CONSERVATION

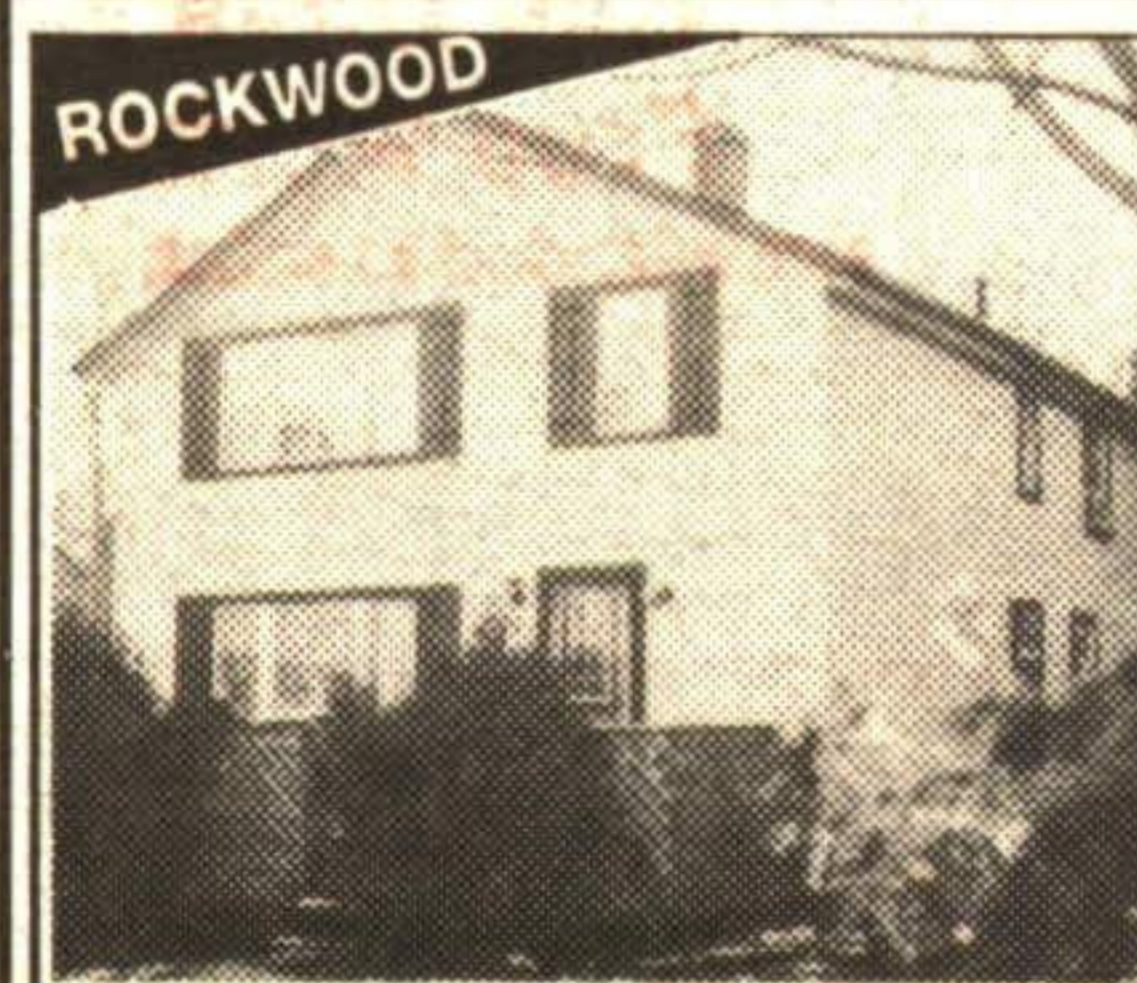


GEORGETOWN
 Picture pretty end unit that's loaded with extras. Super large yard. Freshly decorated interior, upgraded baths, loads of windows, CAC and clean as a whistle! Priced at \$134,900 with flexible closing. 94-2-621

PERFECT STARTER



GUELPH LINE LAND
 Newly severed 7.7 acre parcel with over 500 ft. of road frontage. \$154,900. 94-2-146

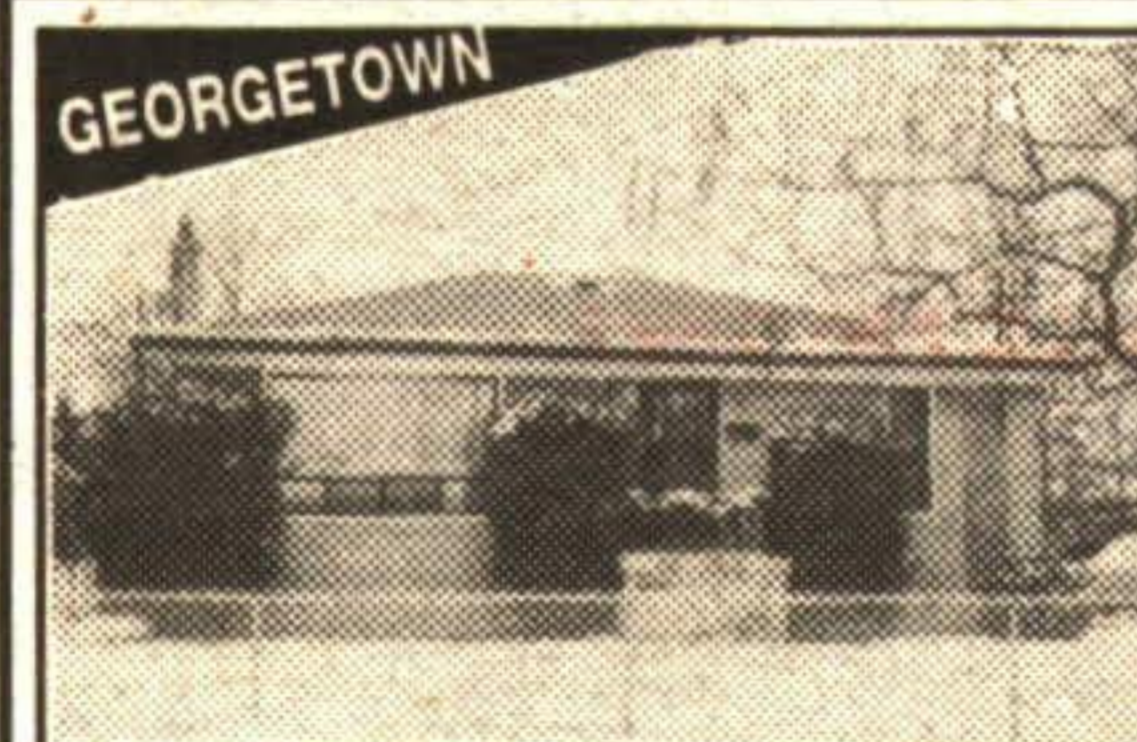


ROCKWOOD
ONLY \$139,000!!!
 Older 2-storey on a large 180 foot lot. 3 bedrooms, large living and dining rooms. New siding and some new windows. 94-2-609



GEORGETOWN
 No qualification required to take over this preferred rate mortgage. Only \$186,900 for this elegant Georgetown home, completely upgraded top to bottom. Beautiful decor, large lot, great location. 94-2-624

GREAT ASSUMABLE MORTGAGE



GEORGETOWN
 NEW LISTING! Only \$162,900 with new roof, central air, aluminum soffits, fascia, windows replaced, gas fireplace and more. Huge lot and a quiet crescent location. Don't miss this one! 94-2-135

THIS ONE IS LOADED!



GEORGETOWN COUNTRY
 All the upgrades here - including central air & vac, new windows, wiring & plumbing. Elegant 1885 home in a superb location just minutes from Georgetown. Main floor den, country kitchen, and only \$269,900! 94-2-590

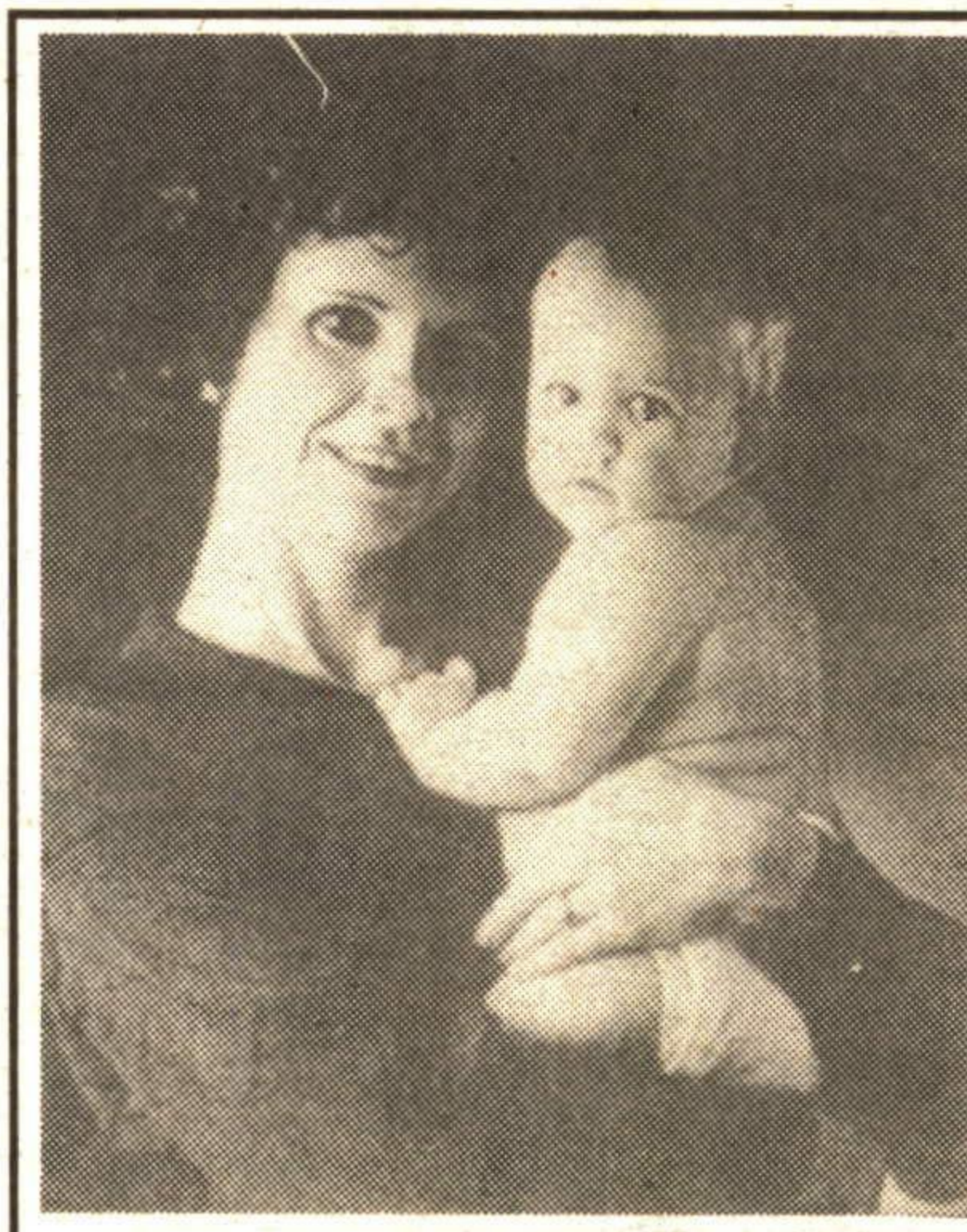
RENOVATED 2000 SQ. FT. - COUNTRY



GEORGETOWN
 Picture pretty 3 bedroom "plus", split-level. New kitchen, hardwood, well appointed on every level. Finished top to bottom by craftsman giving this home instant appeal. Listed at \$179,900 on a mature fenced lot. 94-2-137

HOT! HEAVENLY! HURRY!

Do It For The Kid



When it comes to your family, you want the best for them. That means a home in the neighbourhood that will shape your future and theirs.



Erin:
 (519) 877-5165
 Toronto:
 (905) 874-3040
 Res:
 (905) 877-8402



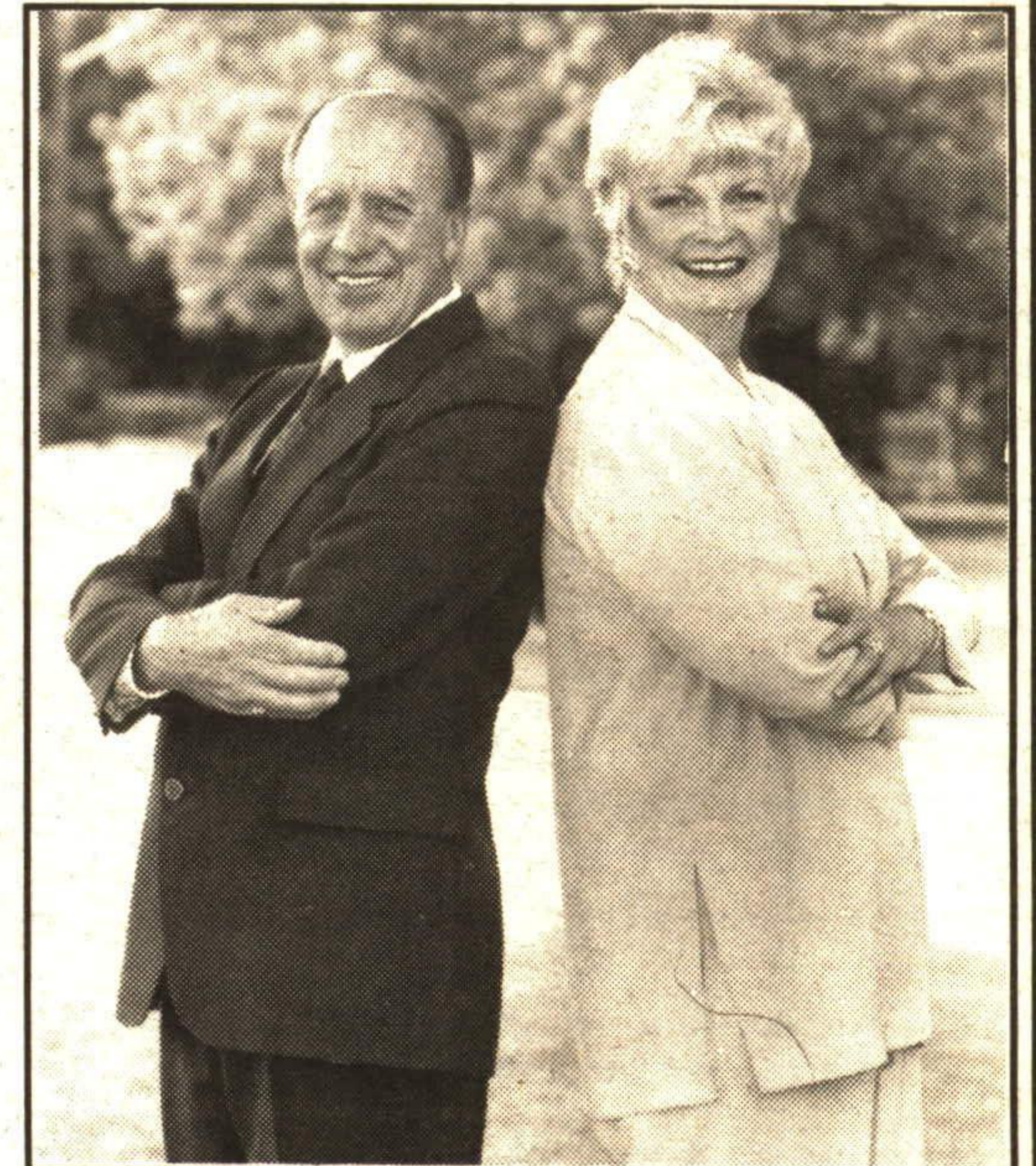
Planting Strong Roots for Tomorrow

It means building a life among people who share your goals and aspirations - good neighbours who will become your best friends.

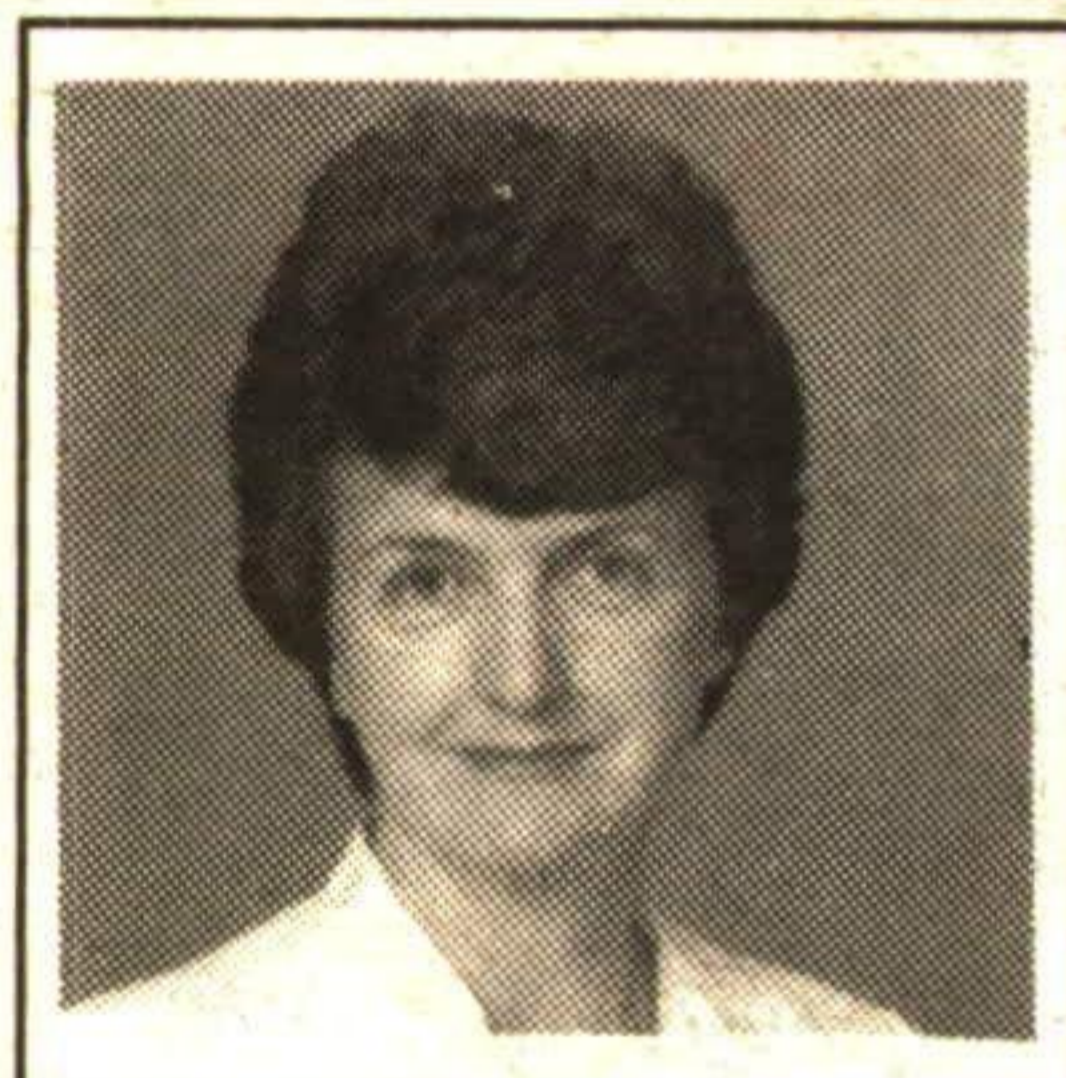
To achieve the quality of life your family deserves, you should call John* & Glenda*. They are the real estate professionals who have devoted many years to helping families just like yours, improve the quality of their lives.

Call John* & Glenda* for a free copy of their Personal Brochure or to arrange a no-obligation real estate consultation.

They'll be happy to show you how to buy and sell with confidence so that you can help your family find a future filled with promise and plant strong roots for tomorrow.



John Hill & Glenda Hughes
 Sales Representatives*



MARY MAAN

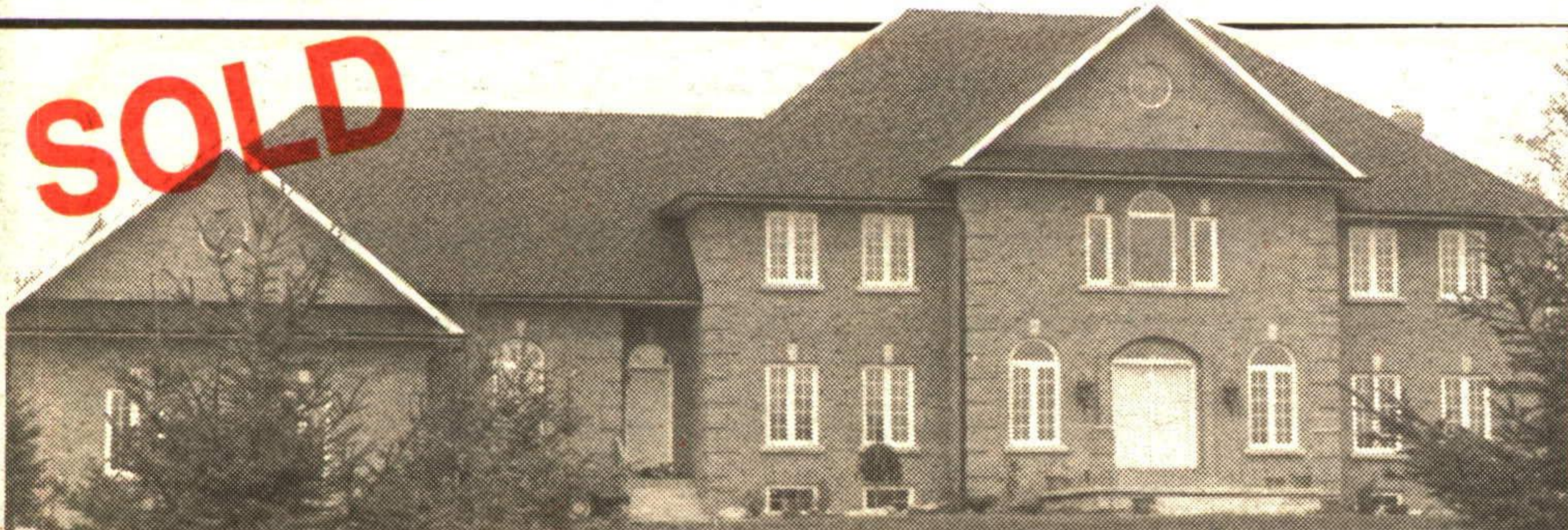
SALES REPRESENTATIVE



877-0173

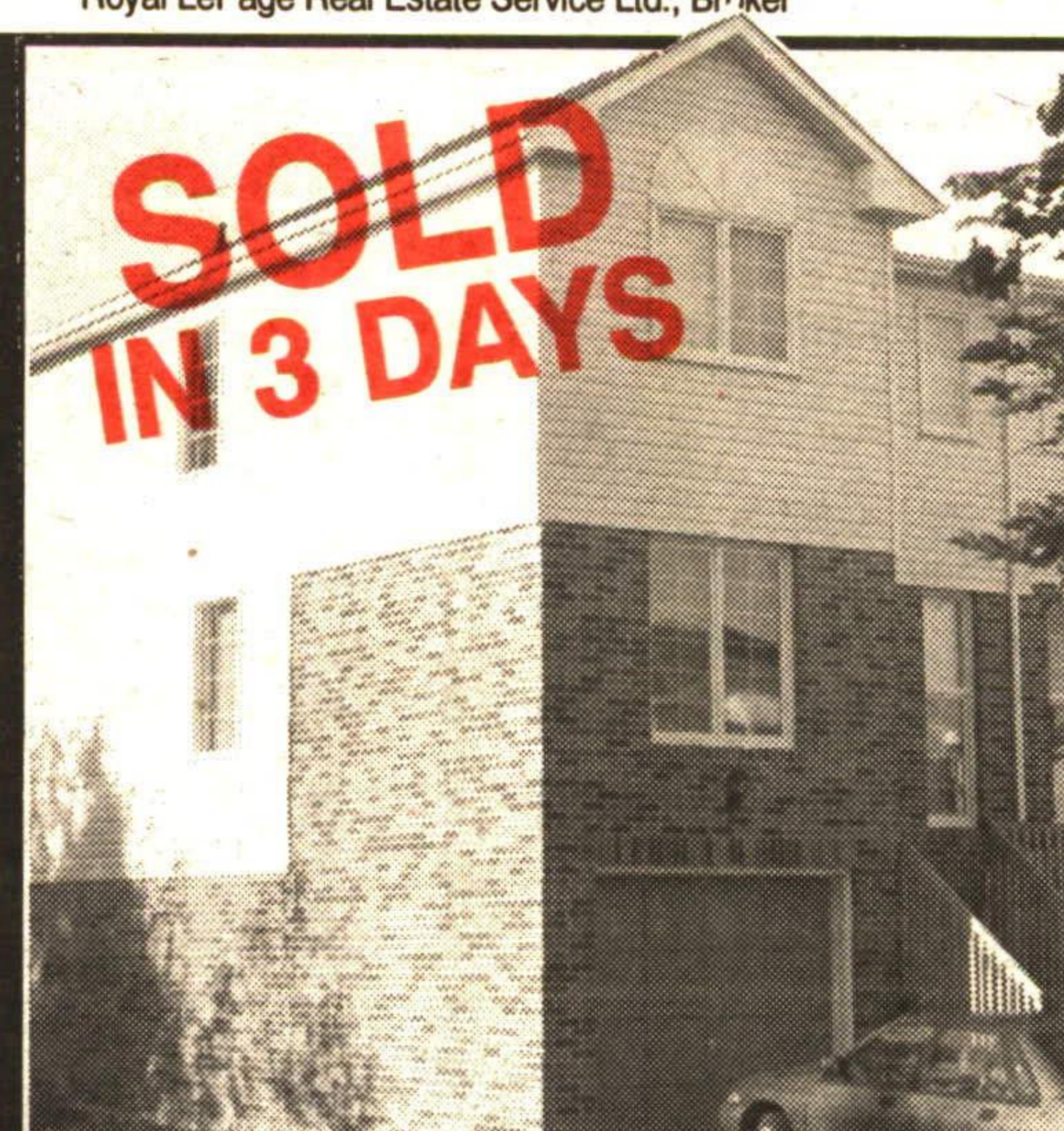
Royal LePage Real Estate Service Ltd., Broker

Exposing your property to over 23,000 agents through the Toronto and Brampton Real Estate Boards



\$599,900 - 8.38 WOODED ACRES, MILTON

Move up to the executive custom built home, double door entry leads to an impressive hallway with marble floor, oak stairs with extra wide spindles, quality hardwood floors in all the bedrooms and upper landing, elegant plaster crown mouldings and sculptured ceilings, several French doors with beveled glass. Huge kitchen with solid oak cabinets and walk-in pantry, separate nanny's quarters. For a personal tour of this beautiful property. Call Mary Maan*. 31-82



8 EDWIN LANE

Country Condo - ravine & greenbelt, private cul-de-sac location, beautiful Briar model 1280 sq. ft., master with ensuite, corner gas fireplace, extra side windows, extremely bright end unit. 10+. Call Mary*. 31-107

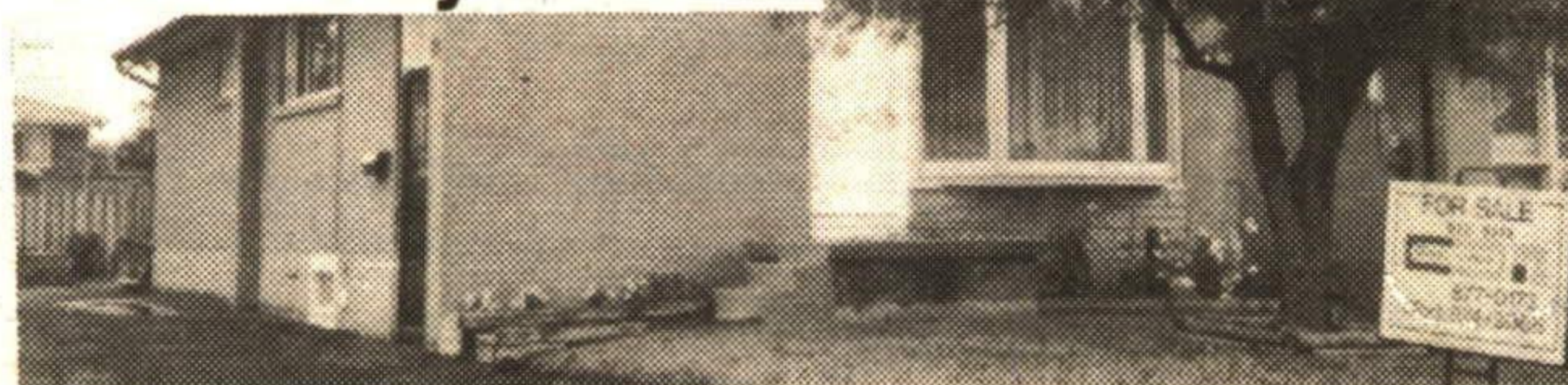


DESIRABLE LOCATION \$159,000

Large eat-in kitchen open concept to living room, roof reshimed, all windows except in basement have been replaced with tilt windows. Hardwood floors, plaster wall, good size lot 60 x 115. Great neighbourhood close to schools, church, shopping, park. Call Mary* for more info. 31-106

OPEN HOUSE

Sunday, Feb. 5, 2 to 4
 25 Rexway Drive



25 REXWAY DRIVE, GEORGETOWN ASSUMABLE MORTGAGE AT 8.5% TO 1997

Well cared for brick bungalow with lots of upgrades, eat-in kitchen has pantry with roll out shelves, and built-in dishwasher, thermopane windows throughout, bay window in liv rm, walkout to pressure treated deck, finished rec room with gas fireplace, r/i wet bar, possible 4th bedrm, 3 pc. bath, paved driveway, extra long and wide for up to 10 cars. Asking \$165,000. Mary Maan. 31-105

**No Listing is too small ...
 No Listing is to BIG ...
 No listing ... is nothing
 I can sell!
 I need your listing to remain in the top 10**

percentage of ROYAL LEPAGE Agents!

