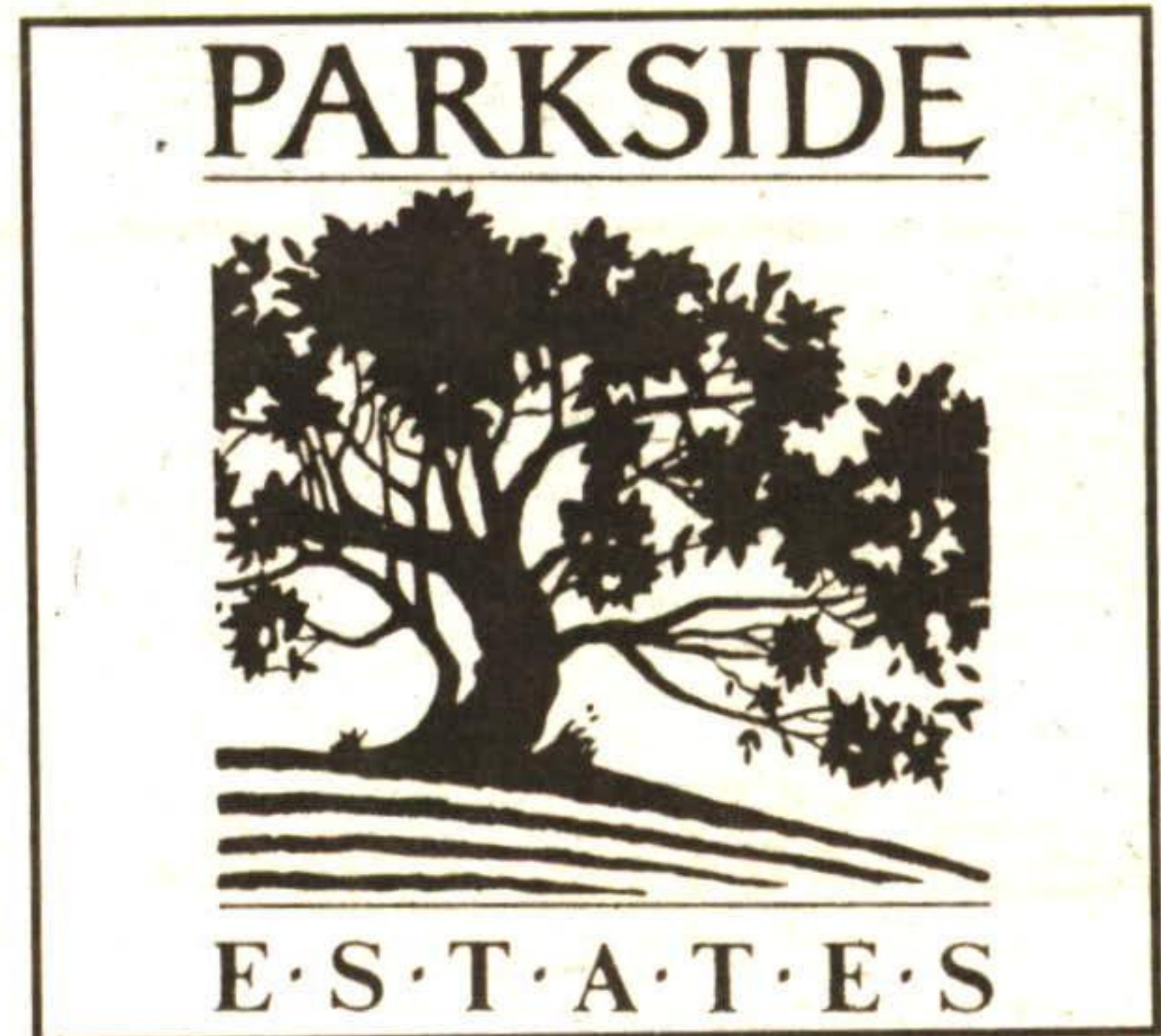
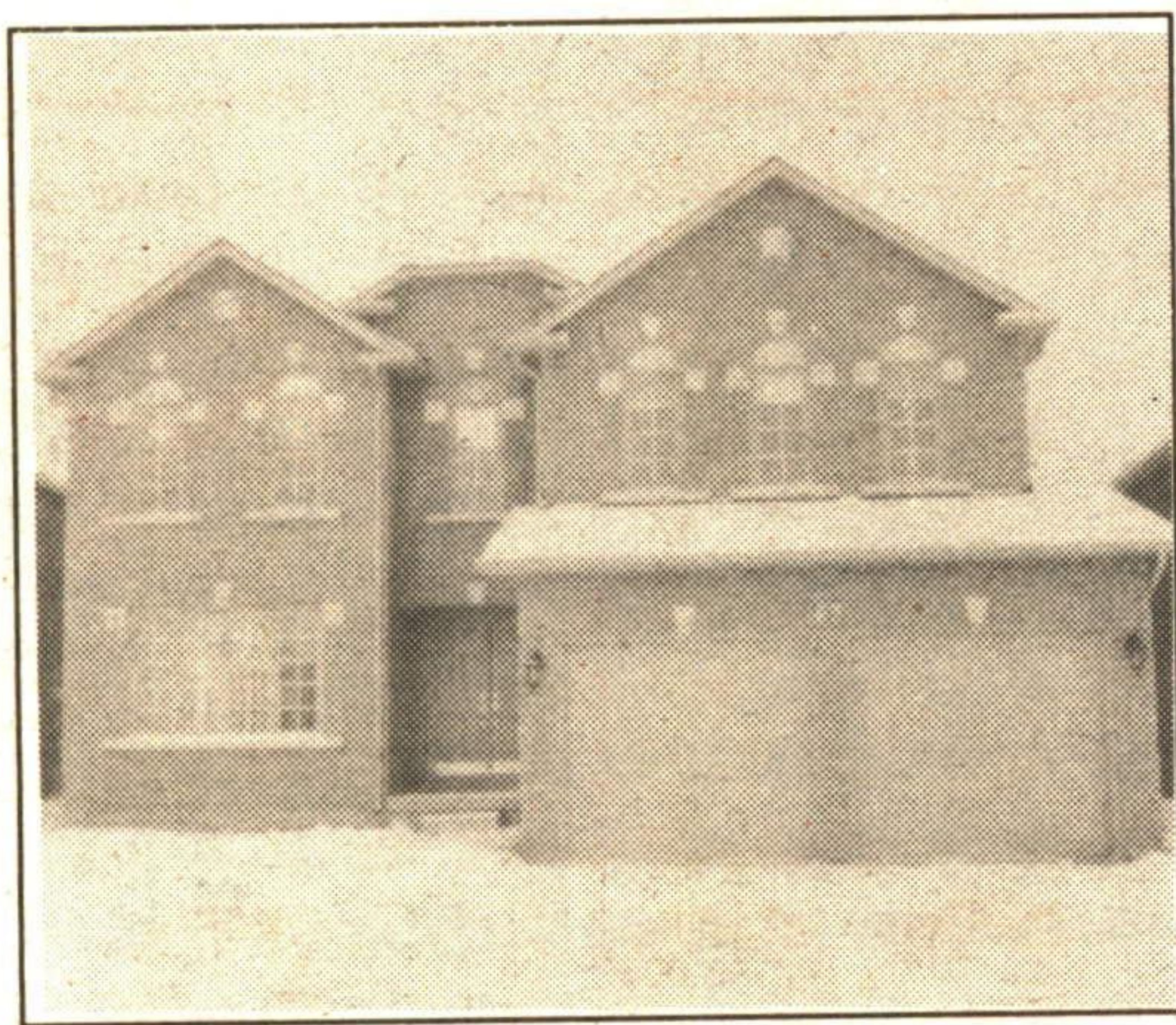


**NEW
MODEL
HOME . . .**

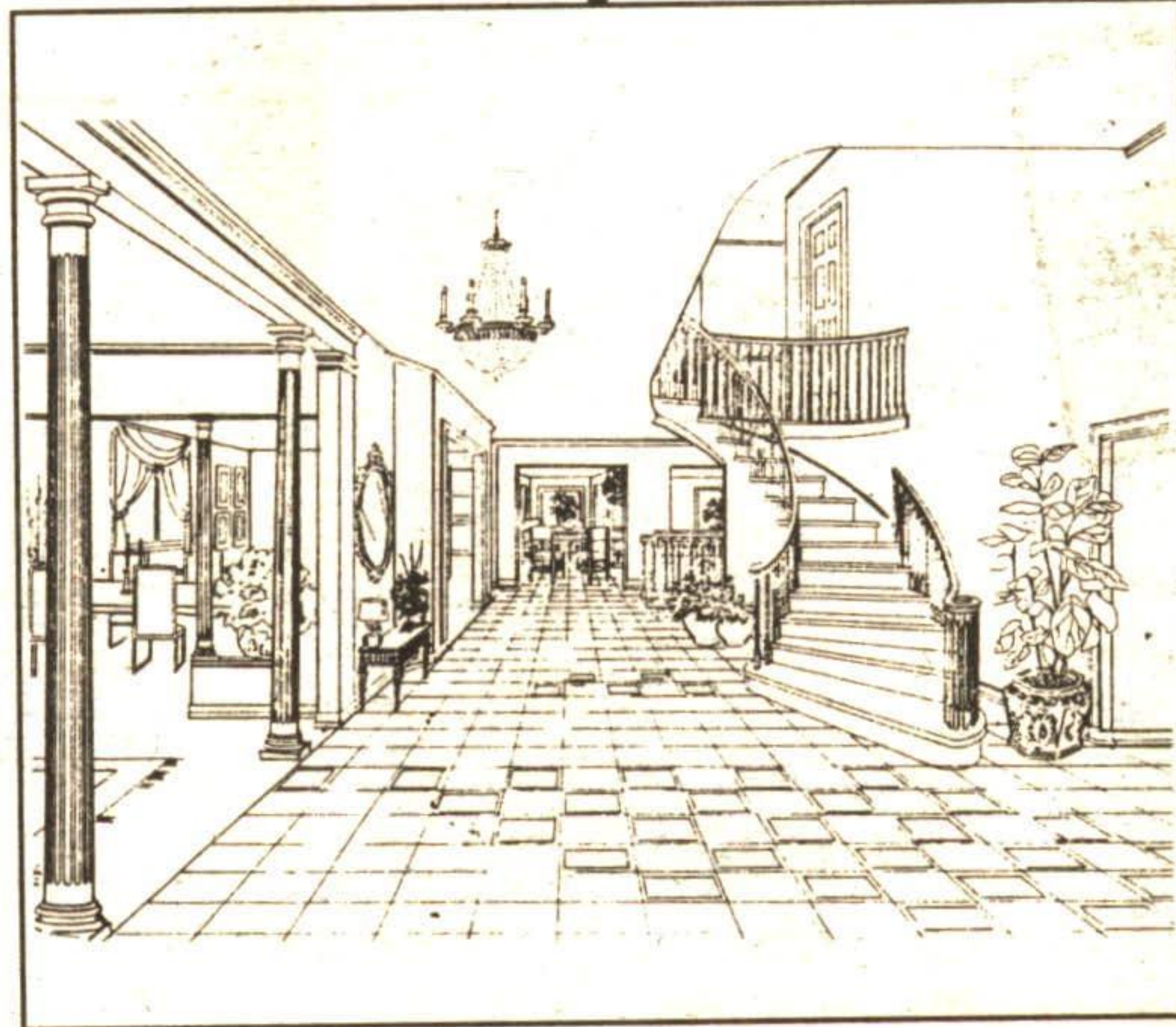
**PARKSIDE
EDEN OAK HOMES
INVITES YOU TO
OUR**



OPEN HOUSE



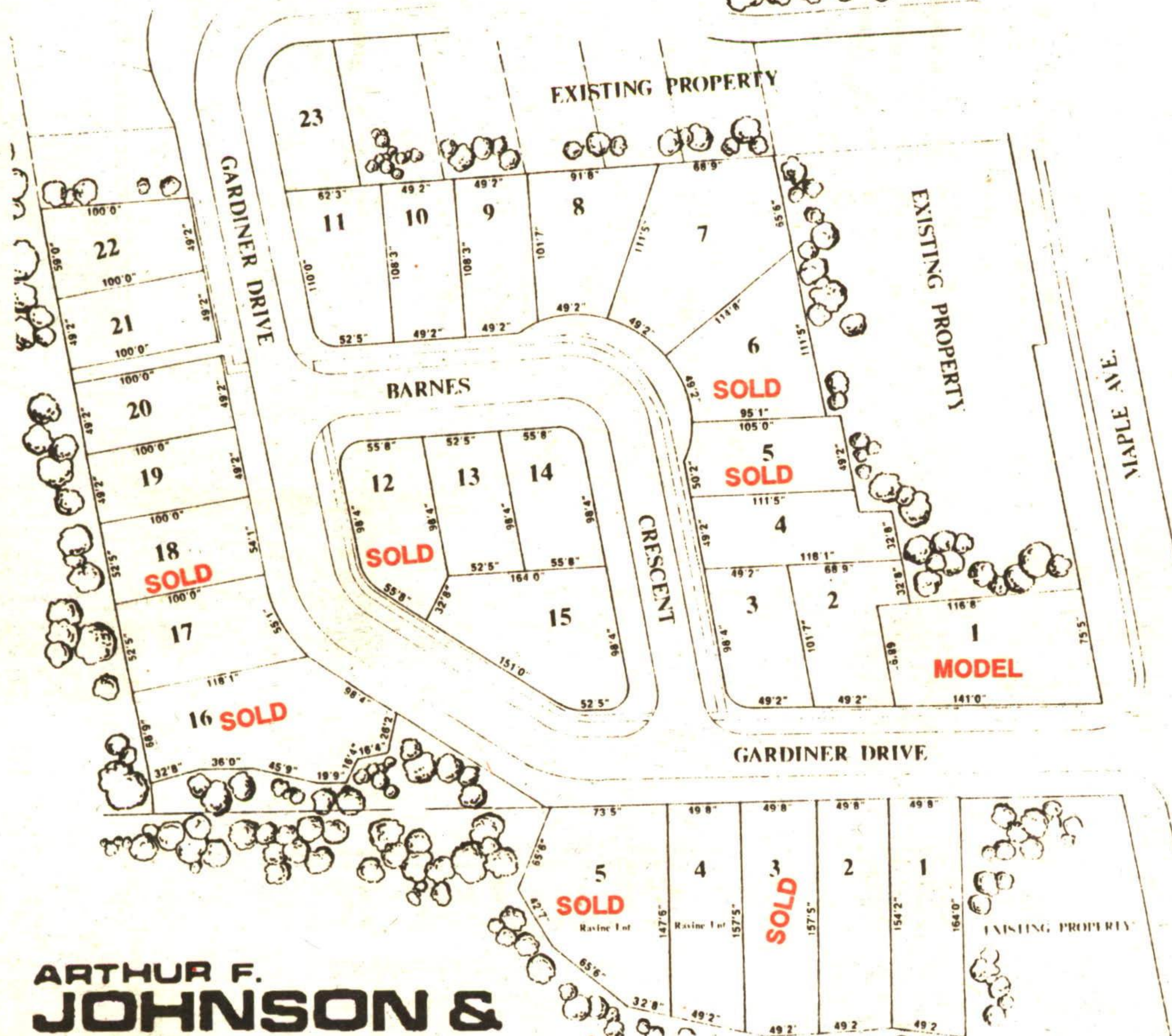
Olive
3006 sq. ft.
\$299,900



**Cherry III
Bungalow**
\$259,900

67 Samuel Cres.

Directions: Mountainview Road South, left on Argyll, left on Samuel.



Features:

- * Ceramic Flooring
- * Thermapane Casement Windows
- * Gas Fireplaces
- * Oak Stairs & Banisters
- * All Clay Brick Homes
- * Very Attractively accented with Keystones
- * Bungalows \$229,900 & up
- * Two Storeys \$239,900 & up
- * Ravine Lots

Hours: Saturday & Sunday

12 noon to 5 p.m.

During the week by appointment

SOLD EXCLUSIVELY

by

DOUG & DIANNE

PENRICE**

Associate Brokers**



**ARTHUR F.
JOHNSON &
ASSOCIATES
LIMITED REALTOR**

(905) 877-5165 Site Office (905) 873-7609