

**LOT 60 FT. WIDE**

Almost 3,000 sq. ft., this beautiful home is still under warranty, oak plank flooring, plush broadloom, huge kitchen opens to the 17' family room, French doors to living room & dining room, main floor den. \$279,000. Call Pam Reid\* today. 95-2-112



**STILL UNDER WARRANTY**

Approx. 2400 sq. ft., main floor den, family room with corner fireplace, oak kitchen with additional work centre, pantry & sunny breakfast nook, master bedroom with raised sitting area, ensuite with step-up tub & double size shower. Asking \$229,000. Call Pam Reid\* 877-5165. 94-2-567



**PAM REID\***  
Sales Rep.  
877-5165

ARTHUR F. JOHNSON & ASSOCIATES LIMITED REALTOR

**SOLD**

**LISTINGS REQUIRED!**

We urgently require more homes to sell, particularly the following styles:  
a) 3 bdrm, 2 storey townhouses  
b) 3 bdrm, detached bungalows, or split level homes.

For a **FREE** Market Evaluation on your home:  
**JULIA STUART, Sales Representative**  
Royal LePage Real Estate Services Ltd., Broker

**ROYAL LE PAGE**

170 Guelph St., Georgetown

**JULIA STUART**

Sales Rep  
877-0173  
Tor. 874-3068



**ROYAL CITY REALTY**



Realtor

(HALTON) LIMITED

Independent Member



BUS.: (519)853-2074  
TOR. LINE: (905) 450-9344

25 MAIN ST. NORTH,  
ACTON

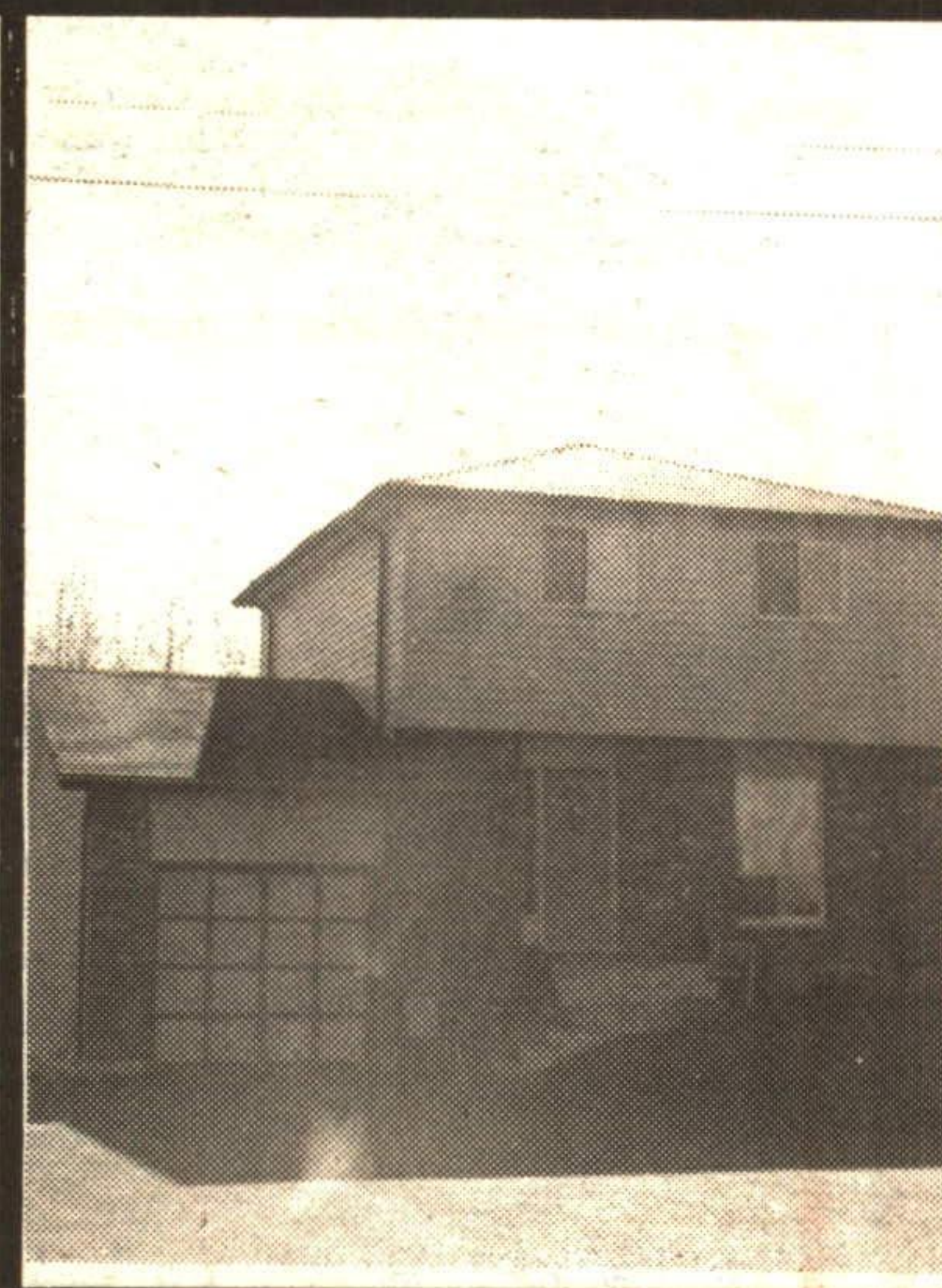
Broker/Owner\*\*\*  
Assoc. Broker\*\*  
Sales Rep.\*



**ONCE YOU SEE IT --**

**YOU'LL WANT TO OWN IT**

*Lovely in-town 6 yr. old 2 storey. Approx. total sq. ft. about 1800. In town but "like country". Total 4 bedroom - 3 upstairs. A bathroom on every level. Artistically decorated from basement, rec room with walk-out to top floor. Walkout from main level dining room to deck and fenced back yard. Forced air gas efficiency furnace. Call -- you'll be amazed how reasonable heat is. Barbara Glenn (off.) 519-853-2074 or (home) 519-853-0923. RCA5-002*



**WITH A NEW HOME**



**SUPER STARTER**

Carries for less than \$1,200.00 monthly with 5% down - why are you still renting? Nice bungalow on good lot. Call Doug\*\* & Dianne\*\* for personal viewing. 94-2-450

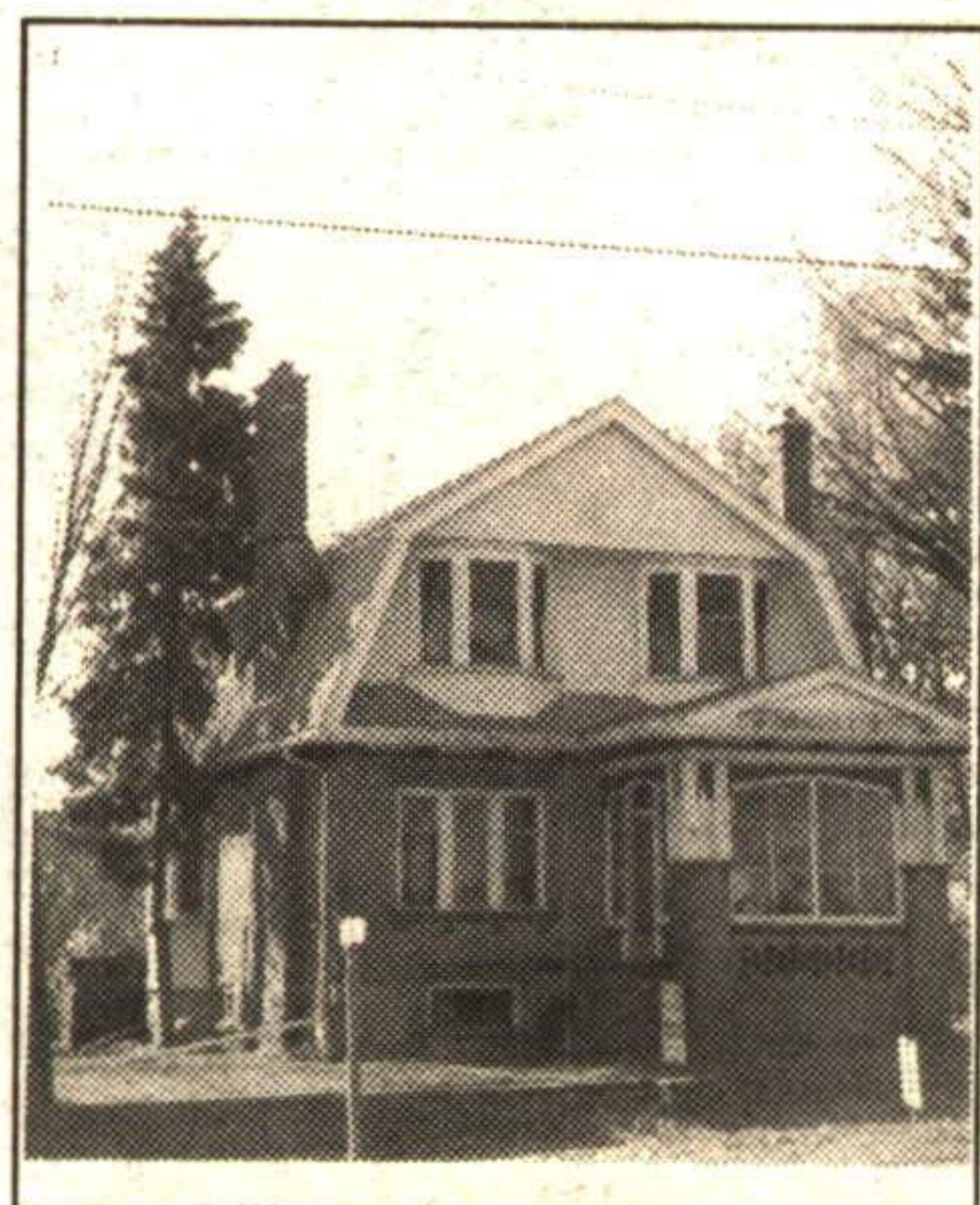


**IMPRESSIVELY NEW**

Over 3000 sq. ft. of exquisite family living, open concept, cathedral ceiling in family room, gas fireplace, ceramic flooring. For all the details talk to Dianne\*\* & Doug\*\*. (P.S. RAVINE LOT)



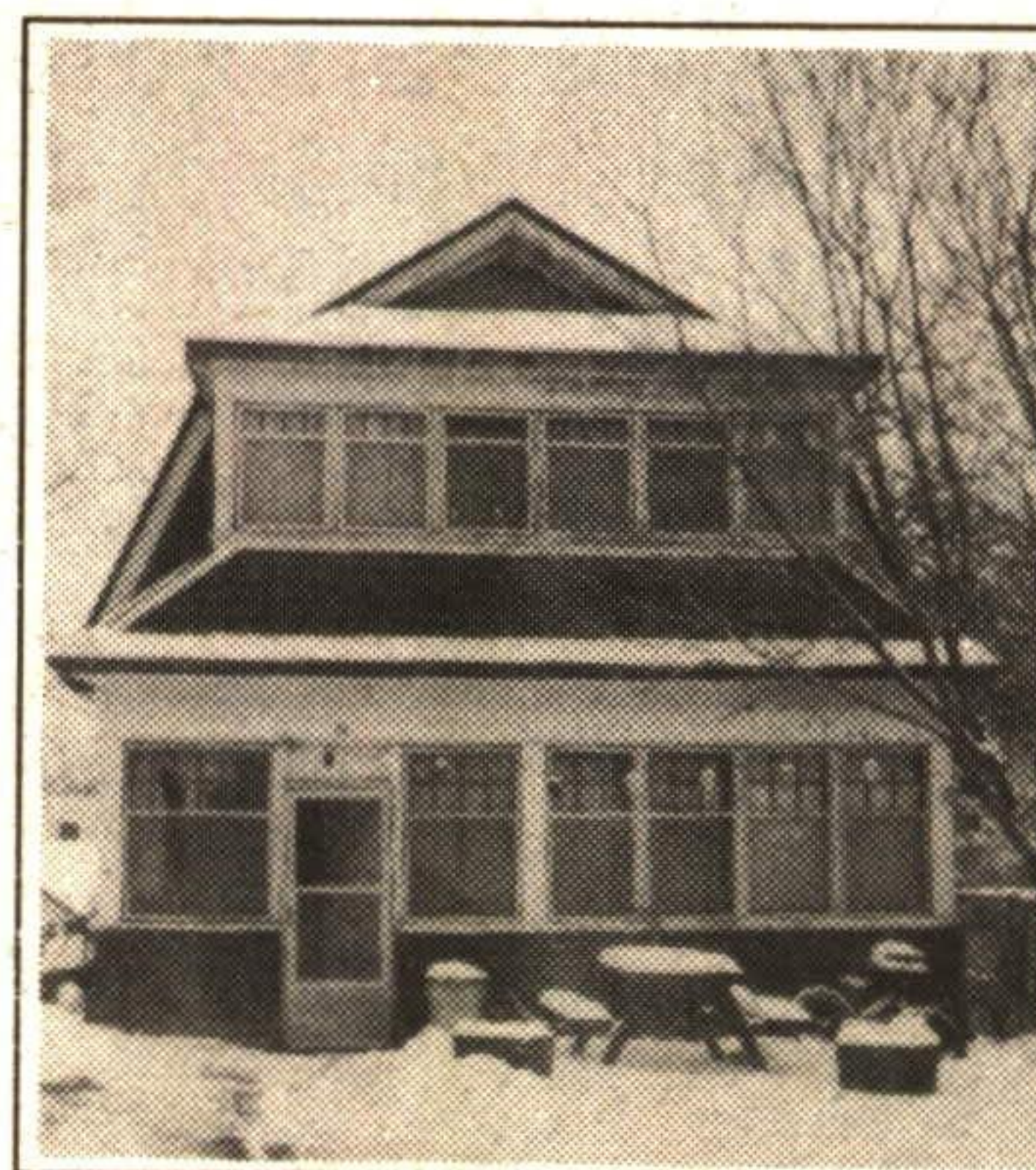
**Doug\*\* & Dianne\*\* Penrice**  
\*\*Associate Brokers



**TWO FOR THE PRICE OF ONE**

Charming older home, loads of original woodwork, 3 fireplaces plus separate rental unit containing two apartments. Commercial zoning. Asking \$229,000. Call Doug\*\* & Dianne\*\* for details. 94-2-587

20 GUELPH ST.



20 GUELPH ST.

**PARKVIEW ESTATES**

- \* Only 20 Lots Left
  - \* Luxury Homes
  - \* Ravines & Large Lots Still Available
  - \* Ceramics
  - \* Oak Stairs
  - \* High Efficiency Furnaces
  - \* Gas Fireplaces
- SOLD EXCLUSIVELY BY DOUG\*\* & DIANNE\*\***

**A.F. JOHNSON & ASSOCIATES (905) 877-5165**