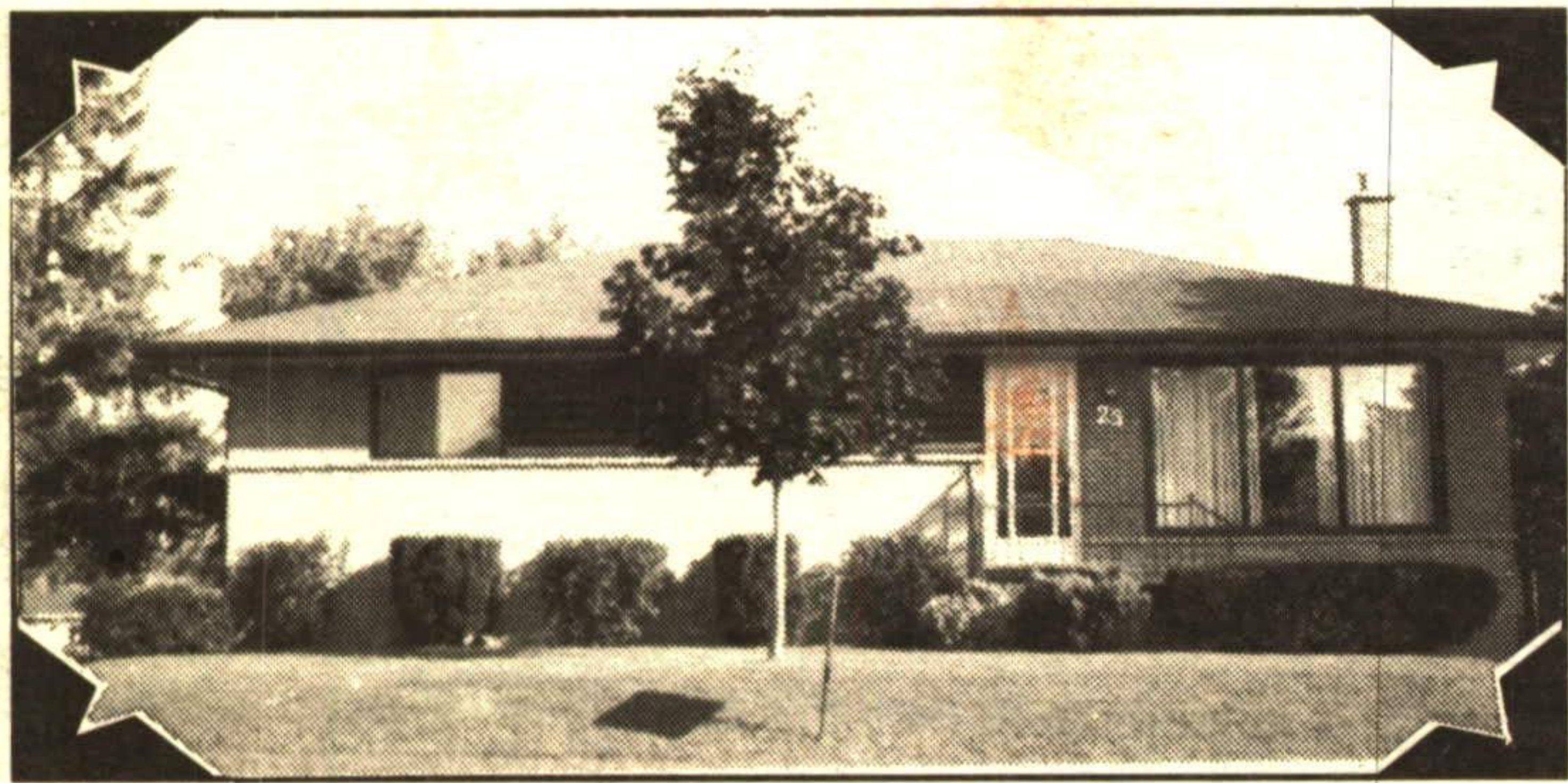




DONNA RAE

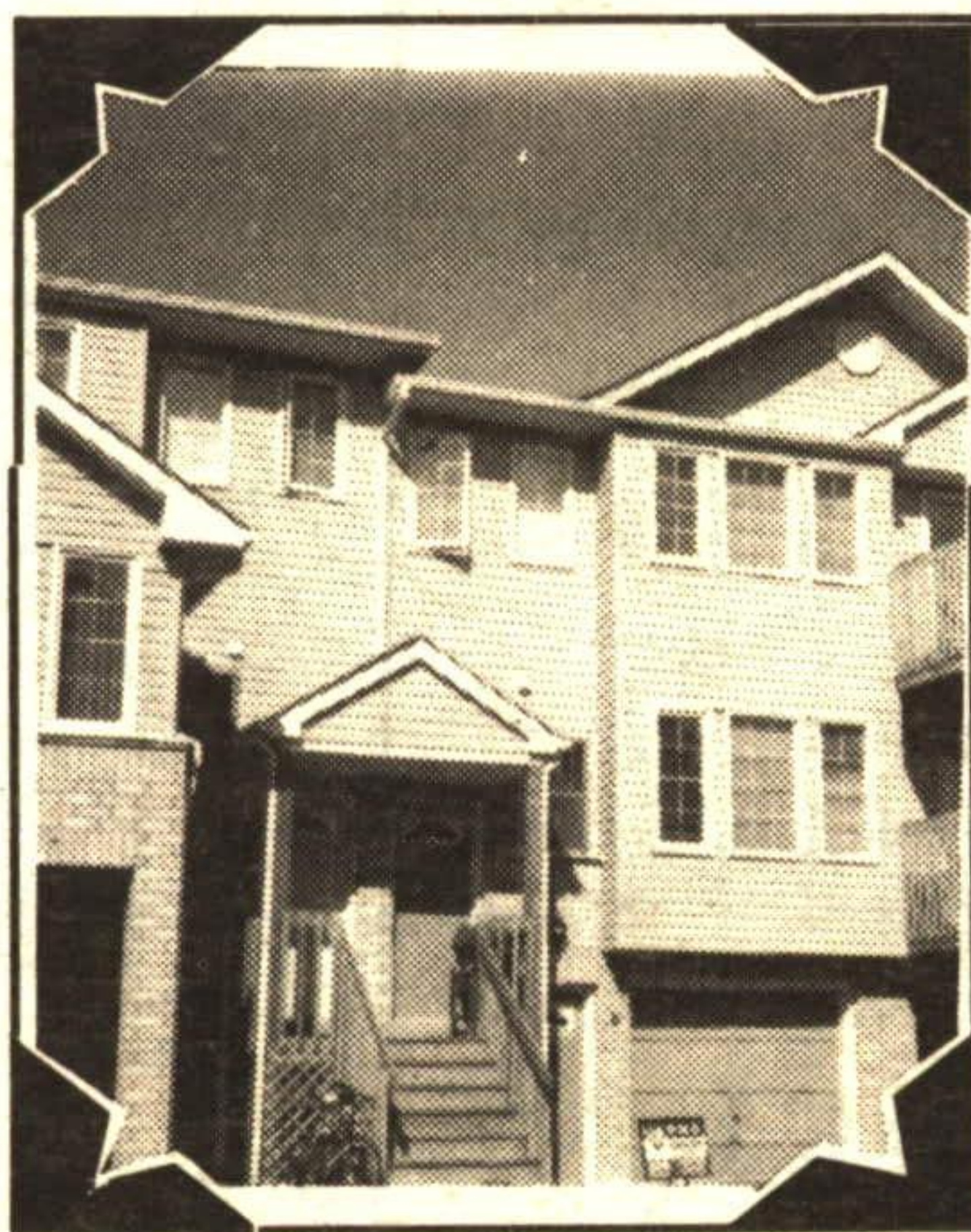
Sales Representative



IMMACULATE PLUS

3 bedroom bungalow, 4th bedroom down, 2 washrooms and new kitchen in sparkling oak. This home is a 10++ and well worth your look. This home will be gone soon so don't miss it. RM259-93

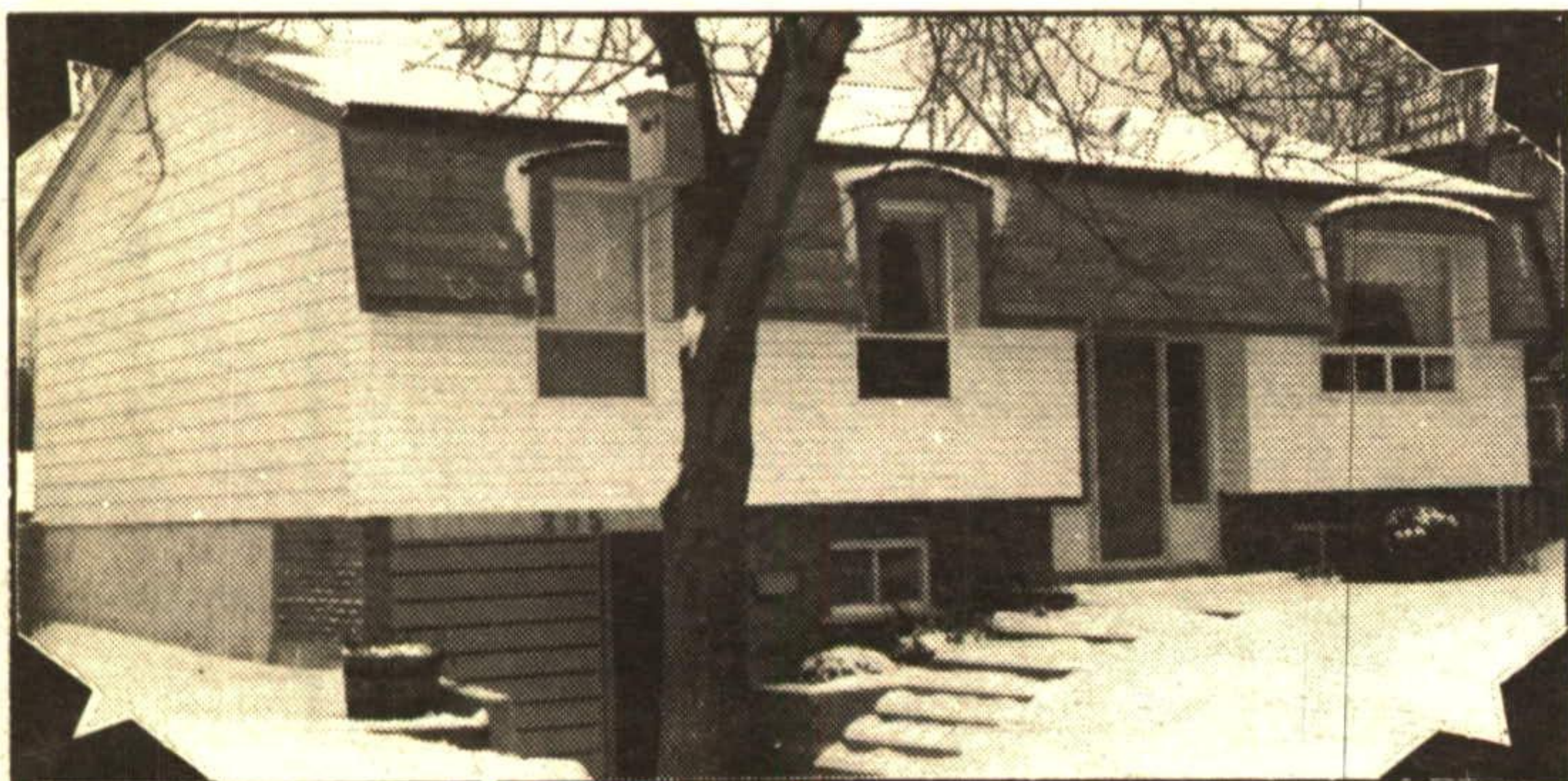
Call DONNA RAE* for details



CONDO DELIGHT

\$124,900. Great price, great layout and great time to buy. 3 bedrooms, 1 used as a family room, ground floor walk-in, single garage, patio walkout. Call for first time buyer advantage. RM239-93

Call DONNA RAE* for details



NEW - \$164,900

Gorgeous 3 bedroom bungalow. Immaculate throughout and elegant decor from the great colour choices to the finished basement boasting a gas burning fireplace. 2 washrooms, separate dining room and single car garage. RM013-94

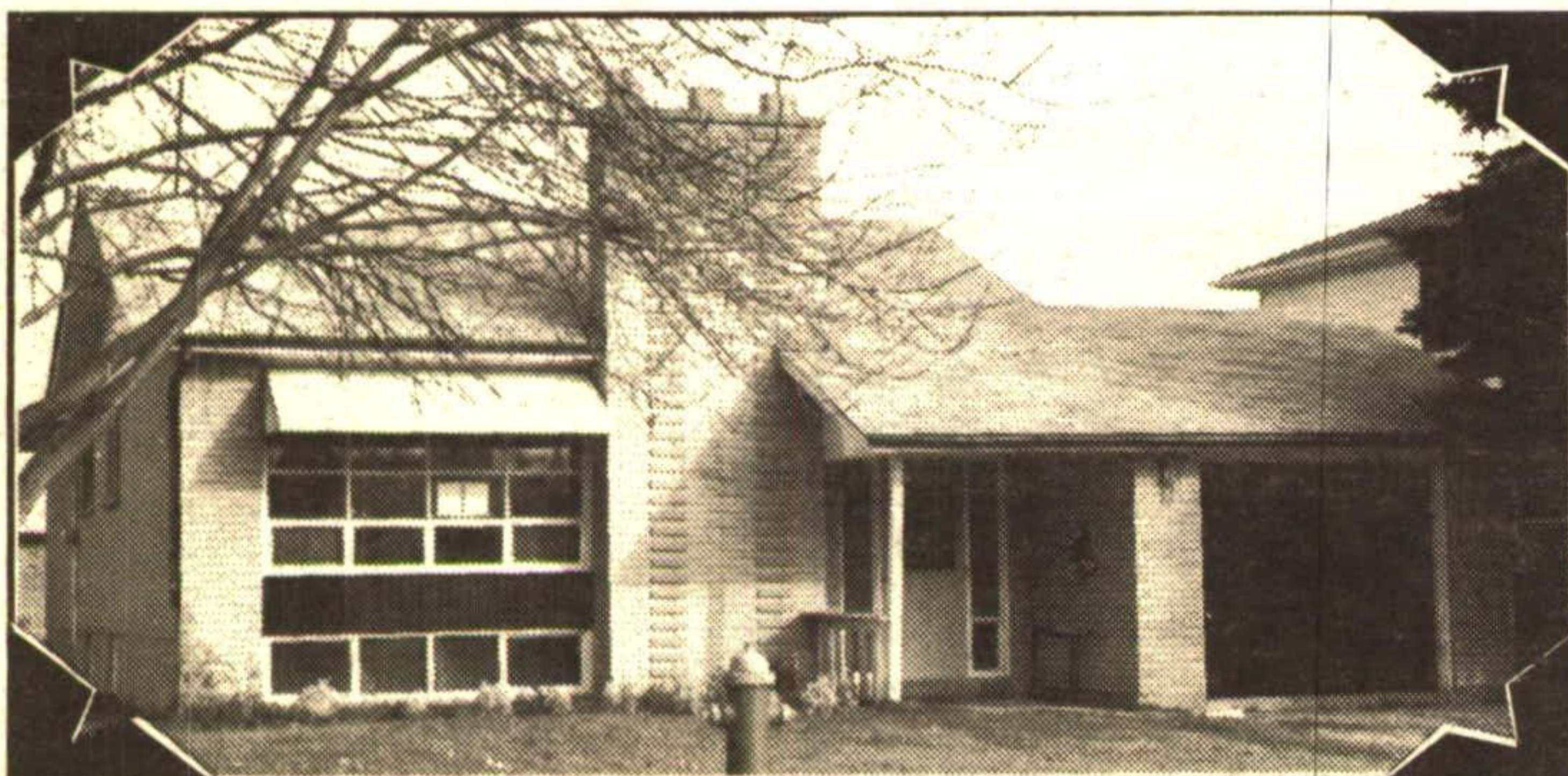
Call DONNA RAE* for details



NEW - \$137,500

First time buyers delight. Hardwood floors, nice bright kitchen, large yard 65x168. Single detached garage. Quiet dead end street. Walk to schools and downtown. Have you been renting but want to own your own home. Call me for details, I can help. RM330-93

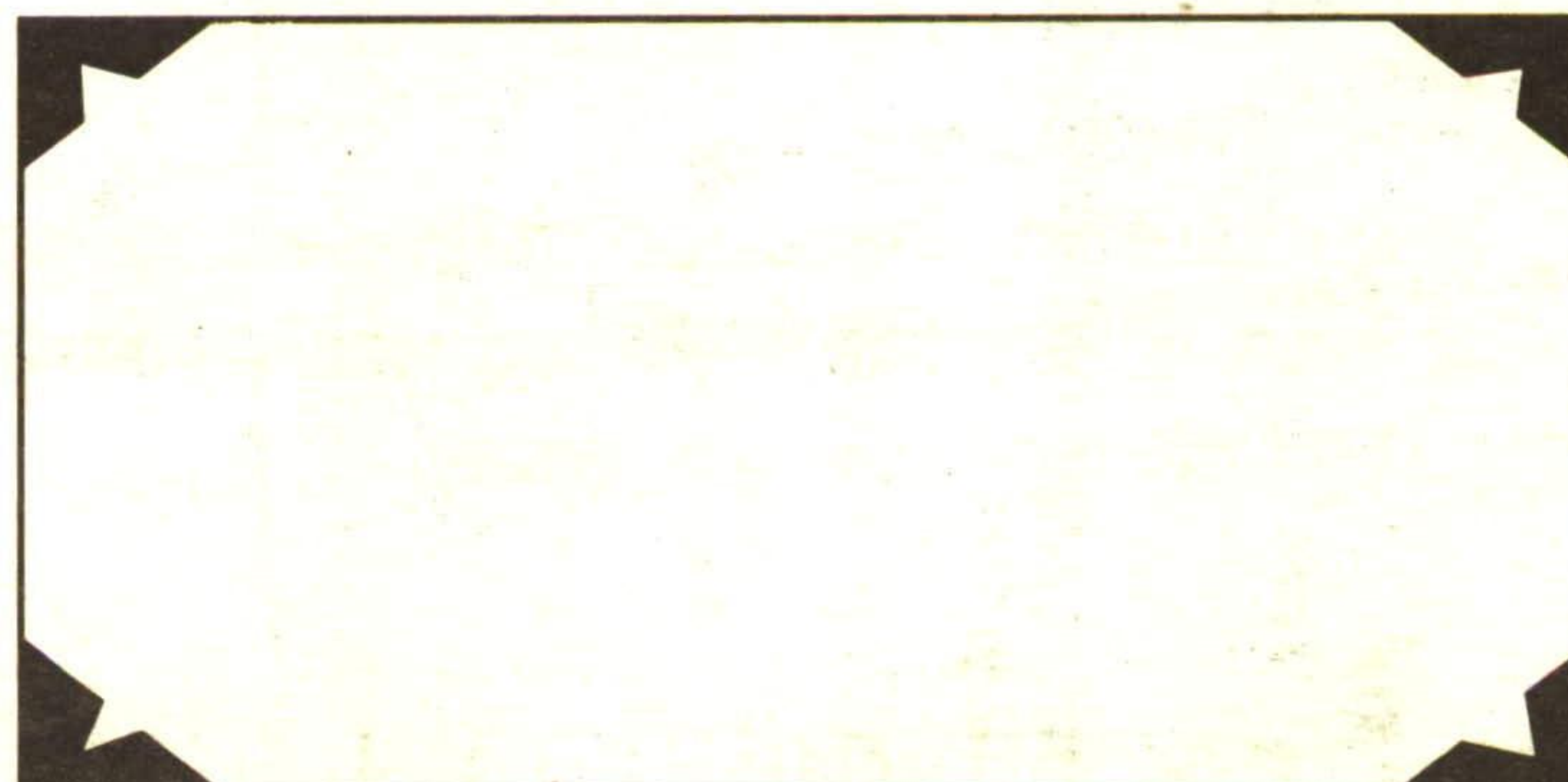
Call DONNA RAE* for details



POWER OF SALE

Call me and I will gladly show you this large 3 bedroom home. Nice broadloom, hardwood floors under it as well as well as throughout. Large kitchen and separate dining room. Fireplace in the living room. Under \$150,000. and won't last. RM150-93

Call DONNA RAE* for details



Call now to place your home in this space until **SOLD!**

RE/MAX

SUBURBAN (91) INC.

877-5211

24 HR PAGER

GREEN THUMB GARDENING



By CHRISTINE COLE

WHAT'S WRONG WITH MY HOUSEPLANTS

LEAVES ARE A PALE GREEN COLOR -- Needs regular application of fertilizer.

BOTTOM LEAVES DROPPING OFF -- Room temperature too cold (especially prone to this is Croton) or plant could be pot bound. Moving it to a larger pot will remedy this.

FLOWER BUDS DROPPING OFF -- Caused by drafts, insufficient light, or/and wide variations in day and night temperature, or humidity that is too low.

YELLOWING LEAVES -- Usually a result of root damage caused by over or under-watering or too much fertilizer. An infestation of insects that suck the juices out of the leaves.

WHITE POWDER ON LEAVES -- Called mildew, is caused by cool temperatures and insufficient air circulation along with high humidity.

BROWN DEAD LEAF EDGES -- Can be due to too much sunlight or too little water.

STICKY SUBSTANCE ON LEAF -- An indication of insects present. Control them with an appropriate spray.

Each week Christine Cole of Tuitman's Garden Centre and Landscaping, Highway 25, 1 mile south of Acton, 853-2480, will be presenting helpful tips and information to assist you in creating your garden show-place!

TUITMAN'S GARDEN CENTRE
ACTON
853-2480