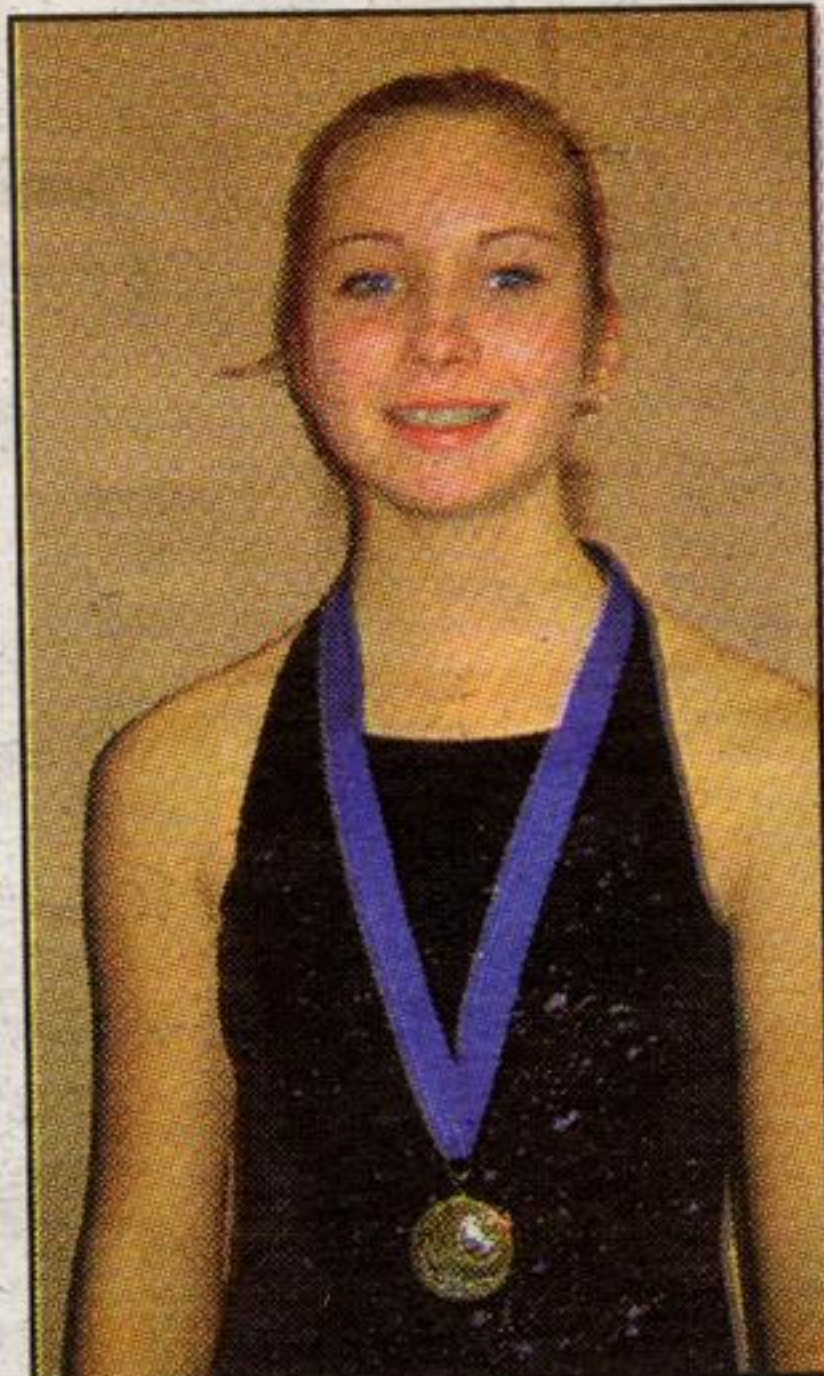




More Acton Stars On Ice Winter Competition



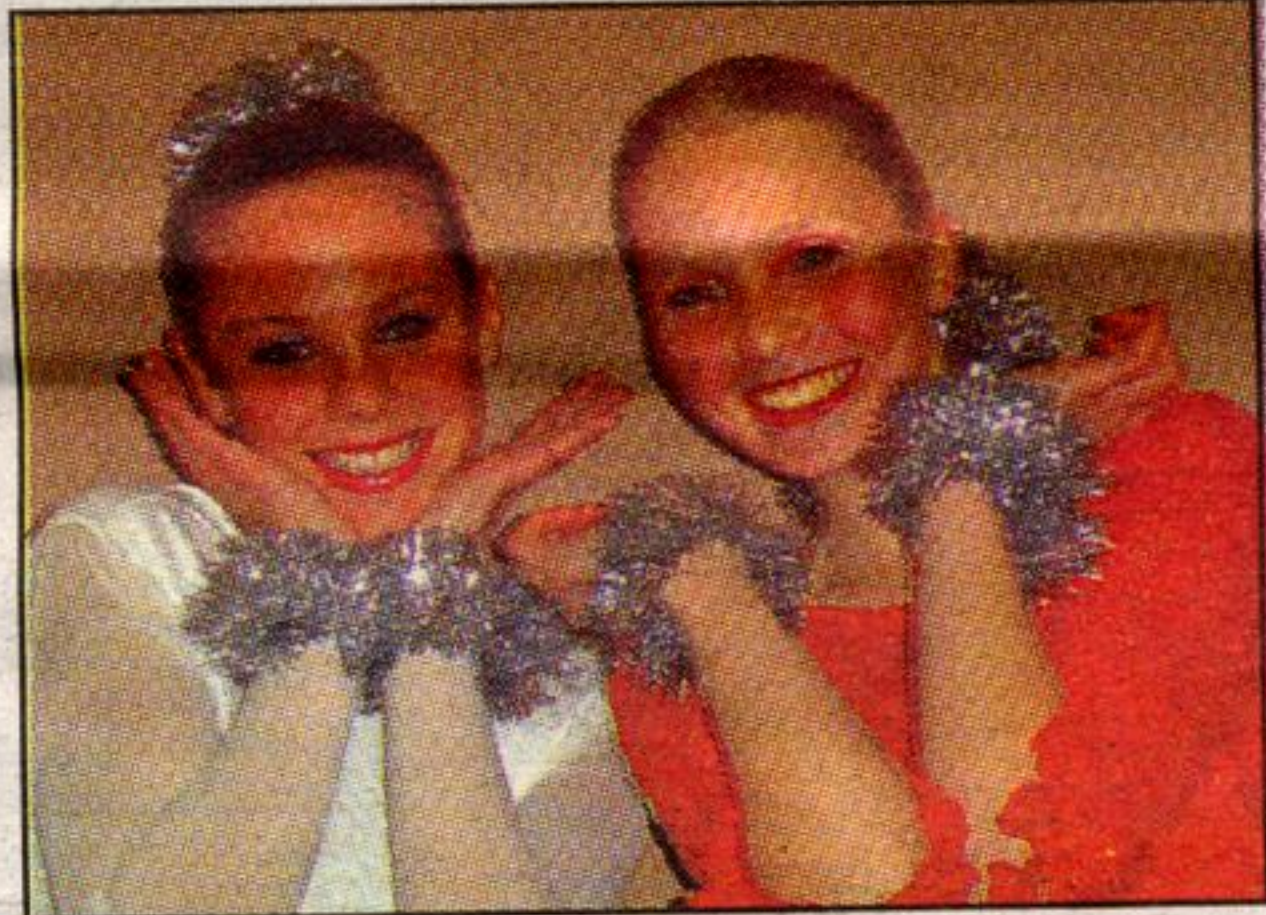
EVENT 2: GREEN CAN-SKATE - 1st Tatiana Walker.



EVENT 16: JUNIOR SILVER DANCE, PASO DOBLO - 1st Katelyn Kurpieweit.



EVENT 13, FLIGHT 2: PRELIMINARY DANCE, FIESTA - 1st Sarah-Lyn Morin, 2nd Ashley Kenny, 3rd Jessica Laton, 4th Madeline Christopher, 5th Joanna Sadgrove, 6th Siobhan Evans.



EVENT 20, SENIOR: SHADOW DANCE, 14 STEP - 1st Emily Vickery / Katelyn Kurpieweit, 2nd Ashley Macpherson / Bailie Marshall, 3rd Krista Savage / Stephanie Dodds (3 photos on right).



EVENT 22, INTERMEDIATE: SIMILAR PAIRS - 1st Joanna Sadgrove / Sarah-Lyn Morin, 2nd Nicole Tremblay / Madison Thornhill, 3rd Jennifer Stirtzinger / Ashley Kenny (3 photos on left).



Acton Jiu-Jitsu

5A Mill Street, East
Programs for 2005

Proud members of the Canadian Jiu Jitsu Association

For Jiu- Jitsu/ Martial Arts/ Self Defence

For Tiny Tots - 3 to 5 yrs
Juniors - 5 to 15 yrs
Adults
Special Needs

T'ai Chi
Women's Self Defence



INSTRUCTOR:

Linda Squires, 4th Degree Black Belt,

Classes: Mon. through Thurs. evenings, Saturday mornings

OUR PROGRAMS BUILD: Confidence, Self Esteem, Respect for self and others, Self Defence, Discipline, Fitness, Fun.

Gift Certificates Available

853-2424

We are a family oriented club.

E-mail: jiujitsu1@sympatico.ca



The Regional Municipality of Halton



On January 1st our NEW website address will be www.halton.ca!

Holiday Waste Collection

No Change to Your Collection Day over the Christmas and New Year's Holidays

Halton Waste Management Site will be Closed on Christmas Day, Sunday, December 25, 2005 and New Year's Day, Sunday, January 1, 2006

Please Note:

Garbage and Blue Box Collection will be picked up on your regular collection day. Collection times may vary due to high volumes of waste material and poor weather conditions, therefore, please place your waste at the curb by 7:00 a.m. on your scheduled collection day.

Please refer to your 2005 Waste Management Calendar for further details or visit our website at www.region.halton.on.ca

Winter Tips for Setting Out Your Waste

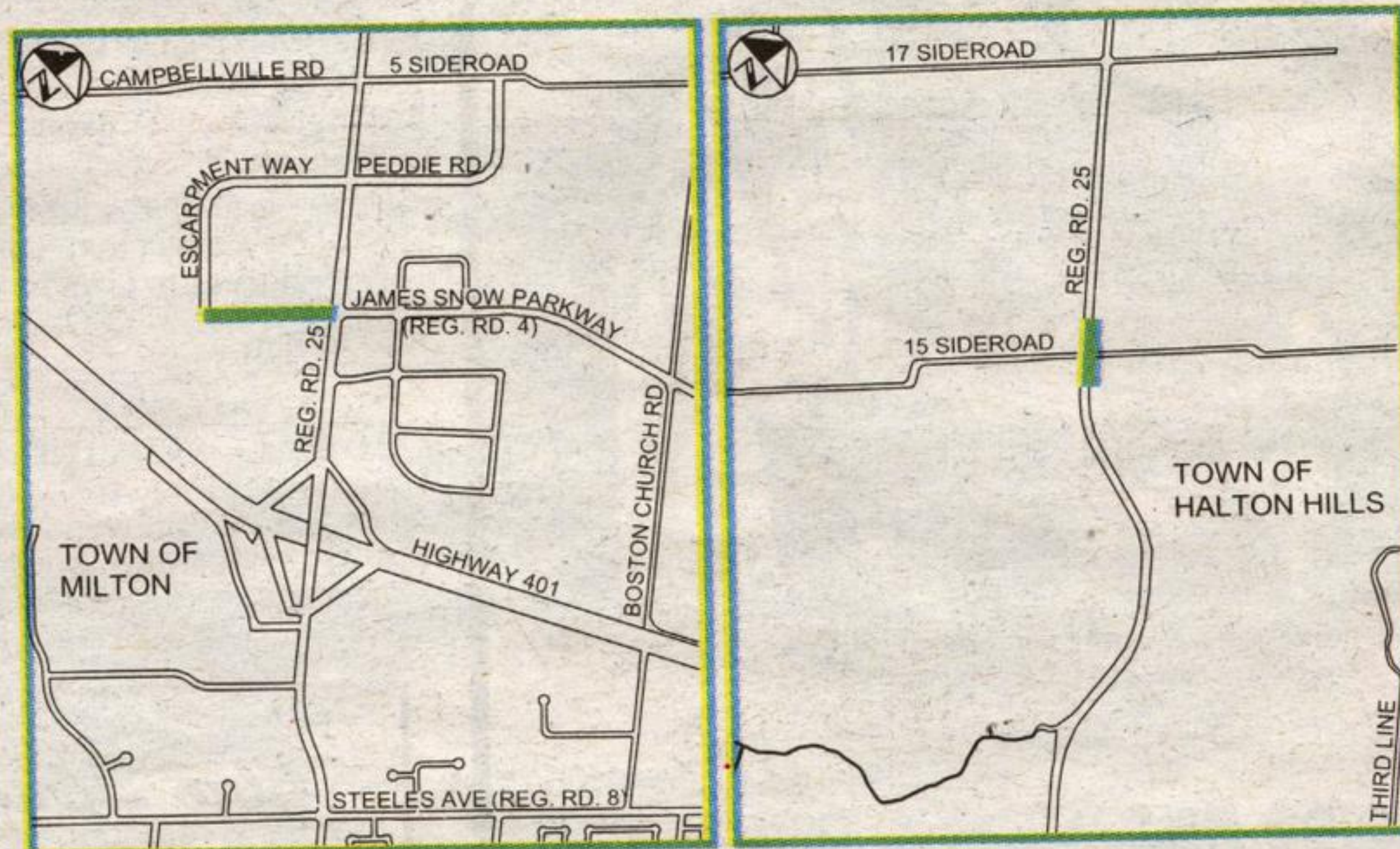
- Place ALL items at the curb by 7:00 a.m. on your collection day, but not before 5:00 p.m. the evening before.
- In one Blue Box, place loose glass bottles and jars, metal food and beverage containers, aluminum foil, Styrofoam, plastic bottles and polycoat.
- In a second Blue Box flatten and place corrugated cardboard, fine paper, boxboard and newspapers.
- Tie cardboard in bundles no larger than 30"x30"x8" (76cm x 76cm x 20cm).
- To save space, crush pop cans, large plastic bottles and beverage cartons, and fill boxboard boxes with other boxboard items.
- On windy days, place your Blue Boxes out for collection on the morning of collection day by 7:00 a.m., instead of the night before.
- Stack your Blue Boxes on top of one another and place heavier items on top to prevent papers from blowing away.
- Place garbage bags/containers on one side of the driveway and Blue Boxes on the other side of the driveway.
- Keep waste items clear of snow and visible to collect. Do not place items on top of snow banks.

NOTICE OF CONSTRUCTION

CONSTRUCTION OF JAMES SNOW PARKWAY (REGIONAL ROAD 4) FROM REGIONAL ROAD 25 TO ESCARPMENT WAY

AND

TRAFFIC SIGNAL INSTALLATION AT THE INTERSECTION OF REGIONAL ROAD 25 AND 15 SIDEROAD TOWN OF MILTON / HALTON HILLS



CONTRACT NUMBER:
SCHEDULED START DATE:
SCHEDULED COMPLETION DATE:
CONSTRUCTION SUPERVISOR:

R-2306-05
DECEMBER, 2005
APRIL, 2006
GORD ROBINS
EXT. 7675