

Planner to look at changes to subdivision

Guelph/Eramosa council wants its planner to look at proposed changes to a rural industrial subdivision on the Sixth Line of the former Eramosa Township. The change removes an internal road pattern and reduces the number of proposed lots to three, all fronting on the Sixth Line.

Council was told the developer has purchased the abutting Whitside property and will create an access off Highway 7 to the second phase of his

development plan. This removes the potential to landlock property behind the first three lots.

The developer promised to honour buffering conditions worked out with neighbouring landowners concerned how the new neighbours might interfere with their horse farm.

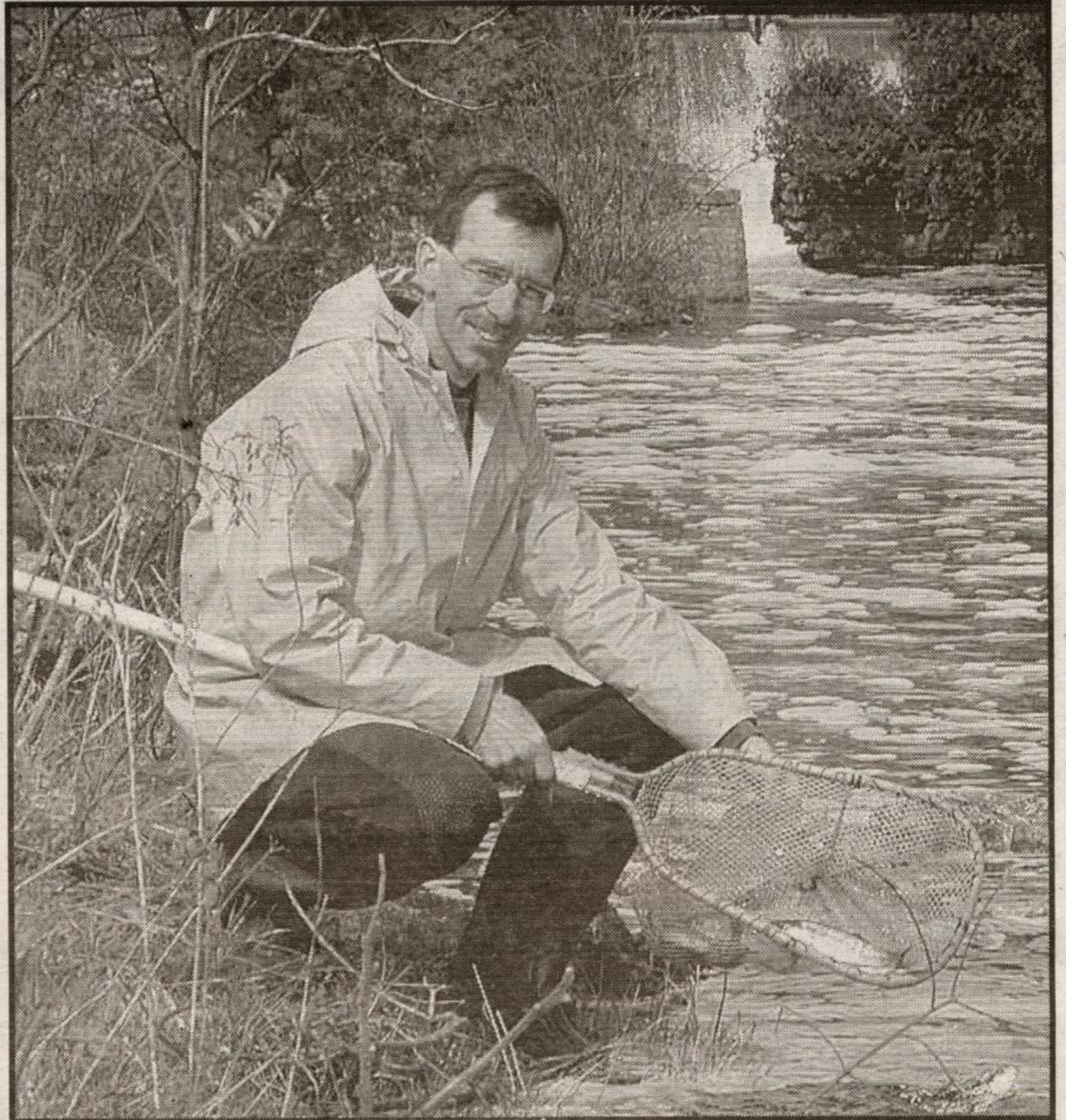
Councillors were also concerned about water from the three lots draining back onto the farm even though that is its present pattern.

EWAG NEWS

There will be a Screening for Infants, Toddlers and Preschoolers, provided by a Speech Language Pathologist, Early Childhood consultant, a Dental Hygienist and Public Health Nurse, and hosted by EWAG Ontario Early Years at the Upper Hall in the Rockmosa Centre. The date is Thursday, May 13 from 9 to 11 a.m. You MUST have an appointment as the bookings are 30 minutes in length. For more information or an appointment contact Jane at EWAG. All services for the screening are free.

Perennial Plant Sale- Keep EWAG in mind when you begin to sort and discard those perennials from your flower bed. Our sale will be at Betty and Ray Death's house, 310 Main St. S, Rockwood, on May 29 and May 22 at the Rob Roy Inn in Erin. We are looking for donations, so please keep us in mind when you are sorting and discarding. We appreciate all the donations as this is our big fundraiser of the year.

We are looking for store volunteers to help out in our thrift store which has been newly christened the Encore Store. If you would like to help out and meet some of the folks in our community too, this is a great opportunity to be involved. Volunteers can work at the store as much or as little as they like and we have various days available. For more information on volunteering in Rockwood, please call Lynn at the EWAG office.



STOCKING UP: This week Ministry of Natural Resources area biologist Ken Cornelisse was busy stocking fish in the Rockwood Conservation Area, the Marden pond, the Guelph Corrections south pond and the children's fishing pond at Belwood Conservation Area.- Submitted photo.

Restocking Rainbow Trout in local Conservation area

The Ministry of Natural Resources is busy stocking local ponds and reservoirs with rainbow trout this week to encourage anglers to explore

the fishing opportunities in Wellington and Brant counties and Waterloo Region.

A total of 6,250 rainbow trout will be placed at eight locations around the area. These trout are the Ganaraska strain raised at the MNR Normandale Fish Culture Station from eggs collected two years ago around Port Hope. The fish will vary in size and depending on the size of the body of water, between 250 and 1,000 fish will be placed in each.

The rainbow trout season runs from April 24 to September 30 and catch and possession limit is two to five depending on the type of licence obtained.

The MNR supports many initiatives designed to promote fishing in urban areas including access developments, angling information, fishing

derbies and festivals, stocking projects and fish habitat restoration.

In the Grand River watershed, MNR partners with many organizations under the direction of the community based Grand River Fisheries Management Plan. Locally, Wellington County Crimestoppers hold a Fund Raising Fishing Derby on either Saturday, May 29 or Saturday June 5 at Dufferin Pit #1, a pond south of Aberfoyle and east of Wellington County Road 46.

Burial costs to increase

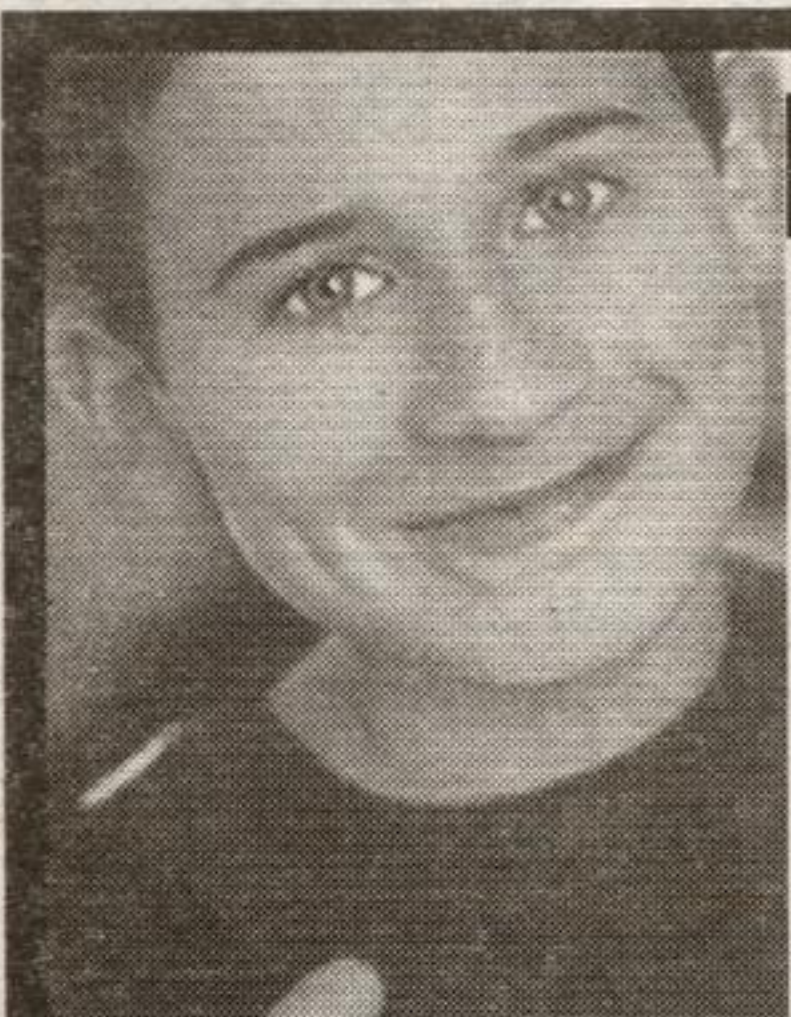
The cost of burials in Rockwood Cemetery will rise again this year.

Woodlawn Cemetery general manager Paul Taylor told Guelph/Eramosa council Monday Rockwood Cemetery is still operating at a deficit, but it can become self-sufficient once its care and maintenance trust fund is at an adequate level.

In order to build up the fund, Taylor has asked council to approve a \$25 increase for burial plots and a \$35 increase in the fee to open an adult size grave.

Gave sites will now cost \$975 each, with \$390 of that sum going into the cemetery's perpetual care trust fund. Burials will now cost \$610 for an adult and \$275 for opening a child's grave up to five feet in length. Cremation plots will increase by \$60 to \$450.

The municipality has an agreement with Guelph's Woodlawn Cemetery to operate the Rockwood Cemetery and manage its perpetual care fund.



A SYLVAN Moment

The moment he discovered that learning feels good.

Help your child feel more confident about school. If your child is struggling with schoolwork — getting frustrated or feeling bored in class — call Sylvan now.

We start with the Sylvan Advantage:

- We identify your child's specific needs.
- Followed by individual attention and personalized lesson plans from highly trained and certified teachers.
- And progress reports for you every step of the way.

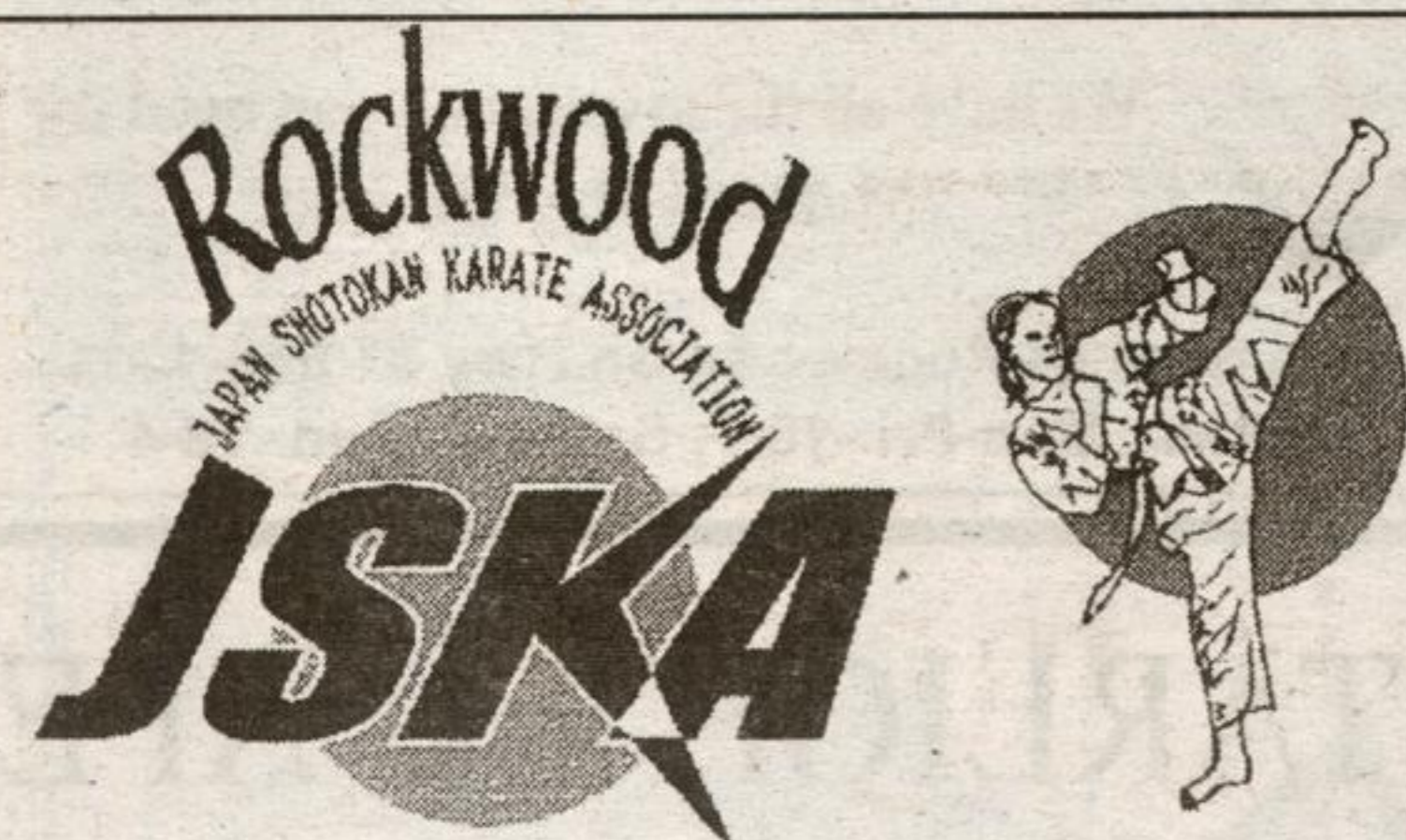
If your child is struggling or not being challenged enough, call Sylvan today.

QUALIFIED TEACHERS

Education Finance Plan Available from \$80 per month

SYLVAN LEARNING CENTRE 27 Woodlawn Rd. W. 160 Kortright Rd. W. (Hartsland Market Square)
Learning feels good. Tel: 823-5711 Fax: 823-5781
www.educate.com

READING • WRITING • MATH • STUDY SKILLS
HOMEWORK SUPPORT • COLLEGE AND UNIVERSITY PREP



Internationally recognized, traditional Japanese Karate skills
Beginner classes are starting now

Register for New Classes NOW



For information call
Dojo Instructor
Donna MacDonald at:
Tel: 519-856-2058

FISHERMAN'S LANDING Rockwood

Phone: 856-4950



"The BEST Fish & Chips"

in Rockwood and all surrounding areas.

HOURS: Wed, Thurs. & Sat. 11:00 - 7:30 Fri. 11:00 - 8:30

THOMPSON CHIROPRACTIC

Serving Acton, Georgetown, Milton & Rockwood

DR. W.R. Tom Thompson D.C.

- SAFE, GENTLE CHIROPRACTIC CARE
- COMPUTER GENERATED SPINAL ANALYSIS
- EMERGENCIES & WORKERS COMP ACCEPTED
- NEW PATIENTS WELCOME

Evening Appointments Available

519-853-3460

25 Main Street North, Acton - Across from Giant Tiger Plaza