



BABY BASICS: Halton Region held a baby/car seat clinic on Saturday at the Acton fire hall. Region Paramedic Jason Barclay reviews some of the basics on infant seats for expectant parents Phil Shea and Carmen Robinson from Georgetown. — Angela Tyler photo

Nature reserves near Georgetown at risk from Ontario cutbacks

Three proposed nature reserves totalling 230 acres in the Georgetown area may be casualties of the provincial governments' proposed changes to a program which provides funding to purchase and conserve ecologically significant lands on the Niagara Escarpment, the Coalition on the Niagara Escarpment (CONE) contends.

Since 1986, the Ontario Ministry of Natural Resources (MNR) has provided funds to public agencies such as conservation authorities and, more recently, to charitable organizations known as land trusts, to purchase ecologically sensitive lands on the Niagara Escarpment and conserve them as nature reserves. The program, now known as the Ecological Land Acquisition Program (ELAP), has been widely praised by environmental groups as well as landowners and has resulted in the permanent protection of 1,787 hectares (4,395 acres) of Escarpment forests and wetlands and 32 kilometres of the Bruce Trail.

However, the province is proposing to expand the geographic scope of the program without increasing the money available.

Formerly, \$5 million a year was spent on acquiring lands on the Escarpment, at Lynde Marsh and in the Rouge River Valley. Now that same amount of funding is going to be spread not only across these lands but also across all parks acquisitions and other land acquisitions throughout Ontario. The result is an expected cut in funds for Escarpment acquisitions by more than half to \$

1million per year, down from \$2.5 million per year.

Environmental groups fear that the proposed dramatic cut to the program will set back the goal of permanently protecting environmentally sensitive Escarpment lands by decades.

"Every year, development pressures on the Escarpment are getting stronger and stronger, which means the cost of acquiring these lands and protecting them in conservation reserves is getting higher and higher," said Jason Thorne, Executive Director of CONE. "If we don't act now by committing the funds necessary to do the job, it will be too late."

CONE is also concerned

that the smaller pot of money is forcing the MNR to strictly limit which candidate nature reserves qualify for funding. The scarce funds will be focused on adding lands to existing parks.

"Adding lands to existing parks is very important," said Thorne. "But there are a lot of environmentally sensitive lands on the Escarpment that are in need of protection that are not adjacent to an existing park. Those lands need to be protected too."

Charitable land trusts had been able to access funds from the ELAP's predecessor programs for the purpose of acquiring lands that are not adjacent

Continued on Page 19

When it's fair to be fowl!...

Continued from Page 13

to get out. As a parent I know how excited youngsters can get. But please, be very careful around the main gates.

Another great free show that delights kids and adults alike is the Northern Borders Flyball and Canine Performance Team. The four-legged athletes are simply incredible to watch. They put-on two performances at 1:00 and 3:00pm in ring #1 at the back of the Midway.

Also on Saturday is the Highway Truck Pull and the Lawn and Garden Tractor Pull. If you've never been to a pulling event, it's very interesting. There's a lot of skill involved.

Another show, included with admission, is the Country Concert starring Jaclyn and Cassandra Williams. So, if your musical taste runs to "hurtin' music" you'll want to be at the Entertainment Tent (on the tennis courts) by 8pm on Saturday night. Please observe the rule of "No Chawin' or Spittin'" inside the tent. That obviously includes the ladies in the audience. Fem-Lib is always observed at the Fair.

Sunday, the English Hunter show starts at 9am. The Midway opens at noon so there's no excuse to miss Sunday Services. On Sunday there's a Western Horse show, Antique Tractor and 4X4 Truck Pulls. If you haven't seen Greg Barrington, "The Horse Whisperer" tame an unbroken horse you should catch his show at 1pm. One of my favourites is the Pedal Tractor Pull with the little kids at 2:00pm.

My point to all this is that there's lots to do in addition to Albion Amusement's great Midway attractions. The Fair brings us back, for three days, to our rural roots. Many young people, out working or at University, make it a point to come back for Fair weekend to meet old friends and catch-up on the latest gossip.

A few last points: Please, other than Pet Show contestants, NO DOGS AT THE FAIR. After the Pet Show please take Fido home, your hand stamp will allow you back in. Handicapped parking is always available, see the nice young men at the Main Gate.

So come out and have a great weekend. See you at the Fair!

Halton Region

A Partnership That Works!



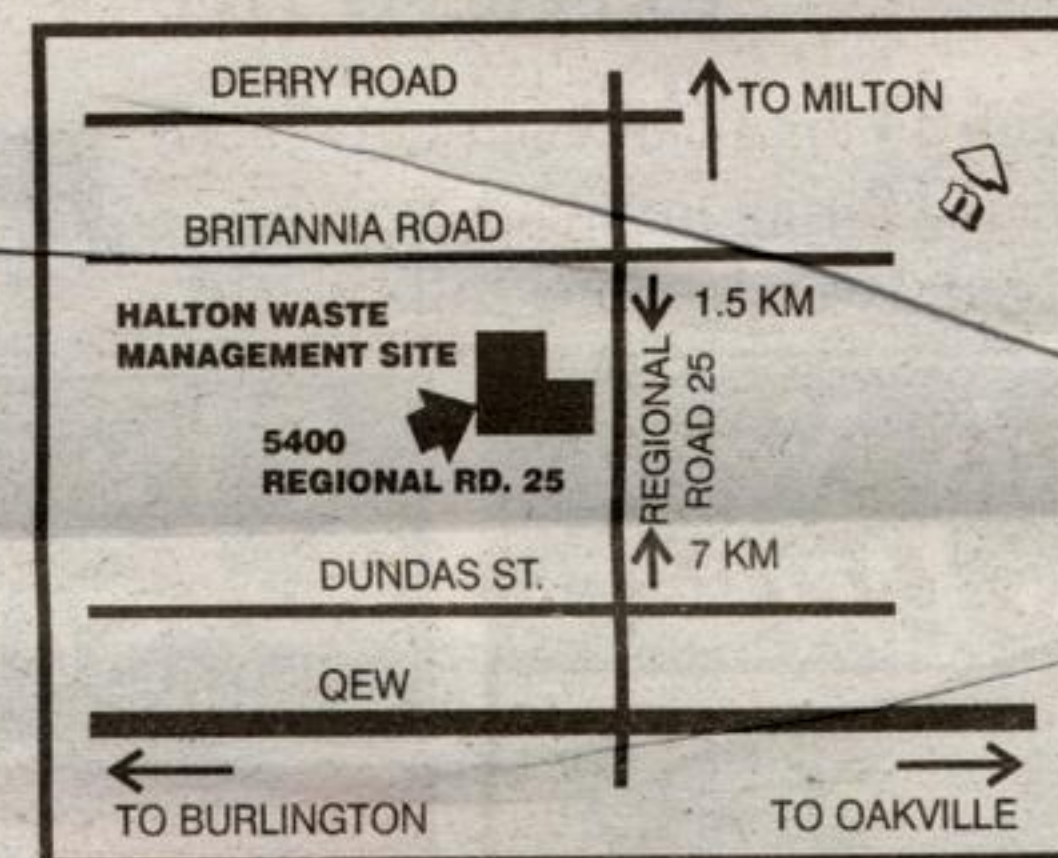
Attention Halton Gardeners!

Fall Compost Give-Away

Monday, Sept. 23 - Tuesday, Oct. 1 (closed Sunday)
8:00 a.m. - 4:30 p.m. *While quantities last*

Halton Residents are welcome to collect rich, garden-friendly compost produced through Halton's centralized composting program.

- Residents are responsible for shovelling and bagging their own compost. - Please bring your own bags / containers and shovel.
- All Halton households are welcome to collect a maximum of seven bags of compost.
- Donations of non-perishable food items will be collected on behalf of Halton area food banks. Donations are appreciated, but are not required to collect compost).



Halton Waste Management Site
5400 Regional Road 25, Milton



Prevnar and Menjugate Vaccines

The two new vaccines to immunize against pneumococcal disease and meningococcal group C disease are now available at the Health Department's monthly immunization clinics.

The clinics are held at the Halton Regional Centre in Oakville and at the Health Department office in Georgetown.

Appointments are necessary. There are costs for each vaccine.

For more information call the:

Halton Region Health Department

905-825-6060, ext. 7857

www.region.halton.on.ca/health

Be a Part of Halton Region's Official Plan Review

This fall, Halton Region is seeking input from the public on its Official Plan. We will be hosting a series of open house and workshops throughout the Region, and we look forward to hearing your ideas on the future of Halton.

The following sessions are the first of eight open houses to be held Region-wide:

Burlington Open House

Monday, September 23rd 6:00 p.m. - 9:00 p.m.

Brief presentation at 7:00 p.m.

Appleby Ice Arena

Appleby Line, north of North Service Road

Milton Open House

Tuesday, September 24th 6:00 p.m. - 9:00 p.m.

Brief presentation at 7:00 p.m.

Nassagaweya Community Centre

Guelph Line north of 15th Side Road in the Hamlet of Brookville

Open houses for Halton Hills and Oakville will be announced soon. Please visit our website for background and the latest updates.

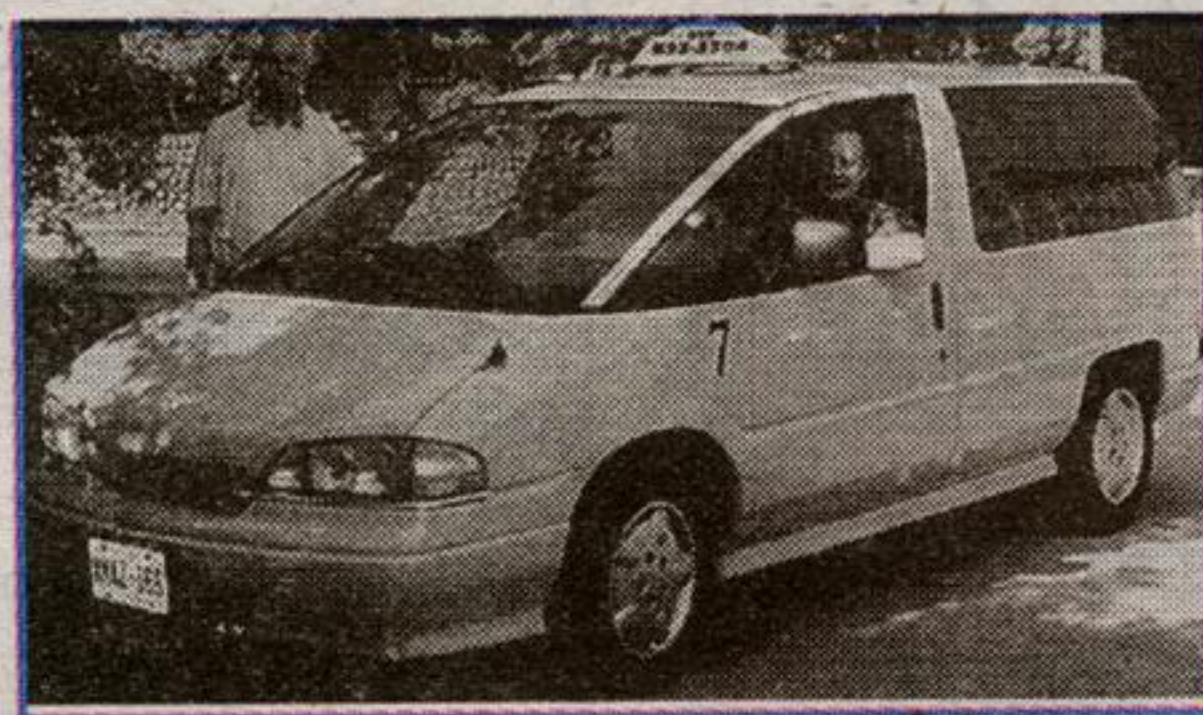
www.region.halton.on.ca/officialplan

Halton Region
2002
Official
Plan
Review

North Halton Taxi

Serving Acton & the Surrounding Areas

Local, Airport and Out of Town Service



24 Hr Service

Airport Flat Rates

Corporate Accounts Welcome

11 Main St. N. Acton
519-853-3304



1151 Bronte Road, Oakville, ON L6M 3L1
905-825-6000 Toll free: 1-866-4HALTON (1-866-442-5866)
TTY 905-827-9833
or visit us at: www.region.halton.on.ca