

# THE CLASSIFIEDS

Where the Deals Are!

## Sunny Motors USED CAR SALES



1998 F150 XLT

323 Queen St.,  
Acton  
853-5459



### Lost & Found

LOST CAT ORANGE STRIPE "Tiger" Male, not neutered, no collar. Please call, 853-5581. (10)

### FREE

SPAYED DECLAWED CAT free to good home, five years old. Call Michelle at 856-4861. (10)

### Job Opportunities

EARN WHILE YOU LEARN!!! For a career in computers! Half day in school and the opportunity to work the other half. Call A.O.L. at 519-824-9431. (tn)

### RECEPTIONIST POSITION AVAILABLE

Part-time receptionist is required for evening hours 2-7pm, Monday, Wednesday and Thursday in busy multi-disciplined health clinic. Drop off résumé at Thompson Wellness Centre, 25 Main St. North, Acton

HEALTHY MEN (aged 20-40) needed for soy nutrition study. \$\$ provided. 824-4120 x8081. (11)

### Pets & Livestock

SPARKY'S (G)ROOM N BOARD, Acton east side, grooming every Sunday 10-6, for dogs up to 75 lb. Pick up/delivery if needed. Call Liz 853-1086. (7)

### CEDARVIEW RIDGE DOG & CAT GROOMING

ALL BREEDS  
FREE HOT OIL TREATMENT FIRST VISIT  
ONLY ONE DOG IN SHOP AT A TIME  
MULTIPLE PET DISCOUNTS  
MEMBER OF O.D.G.A.  
Helen Kirby  
(519) 853-9979  
SERVING ACTON, GEORGETOWN & MILTON

### ANA'S PROFESSIONAL PET GROOMING

PET SITTING  
All Breeds  
Great Rates  
Please call for an appointment  
(519) 856-0605

# Midgets oust Blades but trail Tillsonburg

Acton's Galvcast Midgets edged the Lincoln Blades 3-2 in the deciding game of the OMHA Quarter finals at the local ice palace on February 26 and earned the right to meet Tillsonburg in the semi-finals. However, the Tanners' fate may have been decided now as a strong Tillsonburg club rocked up two easy wins in the first two games of the semis by scores of 8-1 and 9-1. Third and possibly final game of the best-of-five was in Acton last night.

The Blades stretched the quarter finals to six games and gave the Tanners a scare before being edged in the final game. They opened the scoring in the first period before Mike McDonald put Acton on the board from Tyler Thompson and Steve Atkinson.

The Blades took the lead

again in the second period and it looked gloomy for the Tanners until Tyler Thompson scored on a powerplay to tie it with nine minutes left in the game assisted by McDonald. Two minutes later Derrick Greaves put Acton ahead for the first time 3-2 from Atkinson and Shane Drexler to clinch the win and the series.

Acton split the first two games of the best-of-five series but took a 4-3 victory in game three at Beamsville for a 2-1 lead. Lincoln came back with a 4-2 win on the Tanners' own bailiwick forcing a fifth game. It ended in a 3-3 deadlock when the Blades pulled their goalie with less than a minute left in the game,

scoring with only 27 seconds on the clock. They tied it scoring a very controversial goal with one second remaining. The goal had initially been waved off by the referee positioned beside the net as the buzzer sounded.

Ten minutes of overtime failed to break the tie forcing game six in Acton on February 26.

## Tyke Selects tie, win with two Milton teams

By JUDITH KIRKNESS

The St. Andrew Poultrey Acton Tyke Select Team spent the weekend playing two different tyke teams from Milton. Saturday, March 2 in Guelph was the Milton Super 7 team, whom Acton had beaten in each of the three previous times that they met. This time both teams played well, and the game ended in a 2-2 tie.

Ryan Dunlevy opened the scoring for Acton from in close just four minutes into the game, with Holden Carachi and Connor Brown drawing the assists. Milton scored again with five minutes left in the period, and the game stayed tied until Milton scored again with five minutes left in the third. Milton was soon penalized for too many men on the ice on a line change, and Dylan Agnew scored on the powerplay to tie it. Walter Kirkness and Gregory Wells drew the assists.

Both Acton goalies Alexandra Green and Mitchell Christopher played well, each allowing only a single goal.

On Sunday, March 3 it was off to Milton to play the Milton Tyke Select team. It was the first game that the Milton players had played with referees and changing ends between periods, and they did very well, with Acton winning 9-3. Gregory Wells led the way for Acton with four goals to move into a tie for the team lead with 11. He also moved into second on the team with 24 points. Linemates Dylan Agnew had a goal and an assist, and Walter Kirkness added two assists.

The line of Eric Victoria, Ryan Dunlevy and Jeff Curry also had a good game, with Victoria and Dunlevy each scoring two goals, and Curry adding three assists. Dunlevy registered three goals in the two games, while Victoria has scored three in his last four games. Defenceman Nicholas Vandereyken had two assists. Goalie Alexandra Green again allowed only a single goal, and has allowed only two goals in her last three games.

### ASBUILT CLIMATECARE

- Heating
- Air Conditioning
- Fire Places
- In Floor Heating
- Sheet Metal
- Design/Permit Packages

877-8023

### ACTON PRECAST CONCRETE LTD.

Quality Concrete Products since 1963

- SEPTIC TANKS & WATER CISTERNS
- PVC SEWER PIPE
- WELL TILES & CULVERTS
- TRANSFORMER BASES
- STEPS & PORCHES
- YARD & PATIO PRODUCTS

519 853-1529

### BEATON ROOFING

FREE ESTIMATES • Residential with Written Guarantee

- Commercial
- Industrial • AGR
- Air Conditioner
- Curb Installations
- Tar & Gravel
- Shingles
- Steel Roofing

serving: Wellington County & Halton Hills  
(519) 856-9784

## "Home of the Week" ~ Your Building Experts

### Basement-entry design

Stone accents enhance the exterior of this open-concept basement-entry plan.

The covered entrance leads into a generous-sized foyer with a door to the den on the right - ideally located to be used as a home office, if desired.

Stairs off the foyer lead up to the main floor and the welcoming atmosphere of the open plan family living area, which stretches from the front to the rear of the house.

At the front is the great room, with a fireplace flanked by an entertainment unit and a large bayed window overlooking a planter box.

Separate dining area and breakfast room will enable the family to enjoy casual meals at any time in the breakfast room and use the dining area at dinnertime or when entertaining. A sliding door opens on to a sun deck at the front - an invitation to take guests outside for coffee after dinner.

A sundeck off the breakfast room could be used for outdoor meals and is just the spot to enjoy a morning coffee in the sun.

The kitchen, practically placed between the dining and breakfast rooms, has an angled work counter with an eating bar for snacks or quick coffees.

The sleeping wing gives pride of place to an elegant master suite at the rear, with a four-piece en suite bathroom that includes a soaker tub and stand-up shower set into a bay. A walk-in closet provides ample space for clothes.

Bedrooms two and three share the

main, three-piece bathroom.

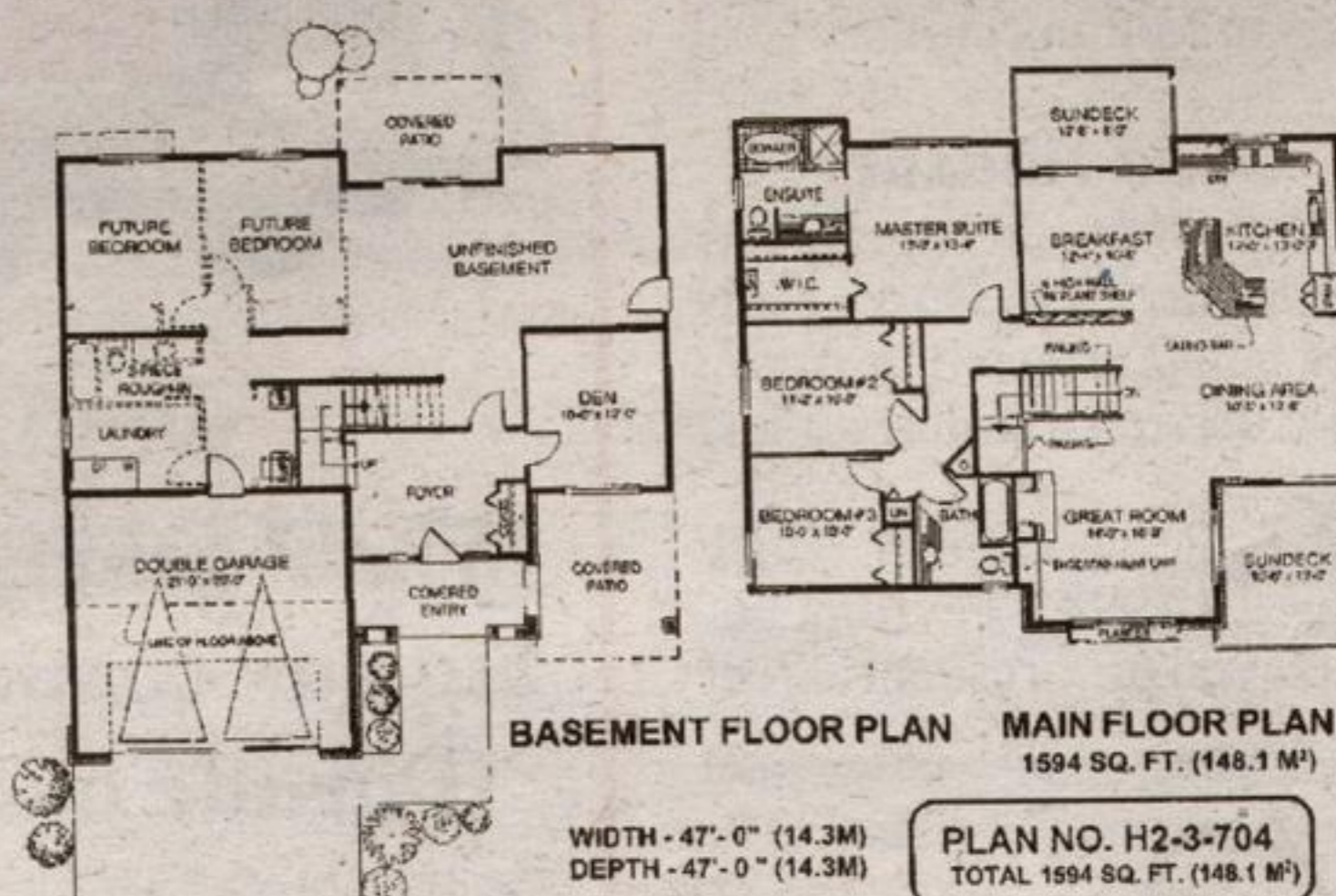
The double garage offers entry to the house beside the laundry room. The remainder of the basement is unfinished, with roughed-in plumbing for a bathroom when expansion is required.

The house is 47 feet wide and 47 feet deep with 1,594 square feet of living space and the unfinished basement.

Plans for design H-2-3-704 are available for \$424 (set of 5), \$490 (set of 8) and \$540 for a super set of

10. Add \$25.00 for Priority courier charges. Please also add 7% G.S.T. to both the plan price and postage charges.

Our NEW 34th Edition of the Home Plan Catalogue containing over 300 plans is available for \$11.50 (includes taxes, postage, and handling). Make all cheques and money orders payable to "Home Plan of the Week" and mail to: Home of the Week, c/o The New Tanner, 336 Columbia Street, New Westminster, B.C. V3L 1A6 or see our web page order form on: <http://www.jenish.com> and e-mail your order to: [homeplans@jenish.com](mailto:homeplans@jenish.com)



# WANTED

## Part-Time REPORTER/PHOTOGRAPHER

General assignments  
Weekdays and/or Weekends

### ALSO HIRING

### Part-time NEWSPAPER

### COMPOSITOR/TYPERSETTER

Knowledge of Pagemaker and Photoshop an asset. For information/enquiries for either position contact the Publisher

THE NEW **Tanner**  
(519) 853-0051

## Raise \$155,202 for United Way

Halton Region officials disclosed that the Halton Region Employee United Way Campaign for 2001 has yielded a record donation of \$155,202.00 - an increase of \$16,372.00 over the previous year.

Significantly higher than the traditional increase of \$2,000 - \$4,000 annually, Region officials credit the unusual increase in donations

to the hard work of the committee and the generosity of Halton employees. The goal was to reach each employee and all efforts were made to encourage participation in year-long fundraising activities; including the payroll deduction plan which enjoyed a record high participation rate of 25% in 2001, resulting in an increase of \$11,133.00 in donations.

### Lakeview FLOORING & KITCHENS

Home Design Centre

- Carpet • Vinyl • Ceramic Tile
- Hardwood Flooring
- Windows Blinds
- Full Kitchen & Bath Renovations

VISIT OUR SHOWROOM  
130 Mill St. E., Acton  
853-4577  
853-1190  
Financing available O.A.C.

### Leathertown LUMBER

264 Main St. N., Acton  
"We have everything you need to do the job right."

- Treated Lumber
- Plywood
- Trim
- Mill Work
- Plumbing
- Electrical
- Hardware
- Windows
- Doors
- Drywall, etc.

HOURLS: Mon-Fri 7-6 Sat 8-4  
853-1970

### RE/MAX Blue Springs Realty

Peter HRKAS  
Exclusive Agent for Bayfield Homes Ltd  
"Choice Lots & Homes for Sale"  
Please call Peter  
877-5211

### G & S EXCAVATING LTD.

Snow Plowing & Removal  
Licensed Septic Systems  
Sand & Gravel  
Topsoil  
Ponds  
Basements Dug

R.R.#2 Acton 853-2515

### WE CLEAN WATER

- iron removal, bacteria elimination  
- soften water, remove sand, etc.

YOUR WATER CAN TASTE GOOD - WITHOUT ODOUR!

### HOMEWATER

(Div. of TRI-MATIC) (Since 1972)  
(519) 848-2570  
We do Spectro-Analysis

### R & R Company

Garage Doors  
Electric Openers  
Windows, Entrance Doors,  
Storm Doors, Patio Doors

SALES, SERVICE & INSTALLATION  
519-853-2114