

Future of Glen Williams being debated

Those who love it as it is, those for bigger

By FRANCES NIBLOCK
The New Tanner

Those who love Glen Williams just as it is, and those who wish there was more to love, jammed the Council Chamber last week to make their cases at a public meeting on the hamlet's future.

Much has changed in the 20 years since the first secondary plan was done, and the proposed blueprint for the next 20 years includes updated environmental policies, policies to prevent cookie-cutter subdivisions and heritage policies to preserve the unique character of the Glen and allow limited growth—500 people more for a maximum population of 2,000.

Balancing "constraints and opportunities" the Town's consultants have developed a map of areas where growth could take place, areas where it can't, and a buffer, or no-build green zone, ringing the hamlet.

Consultant Mark Conway said the plan centralizes commerce in the core and keeps it what it should be—a "really neat place."

He said the answer to the community's concern over stopping the "constant badgering of devel-

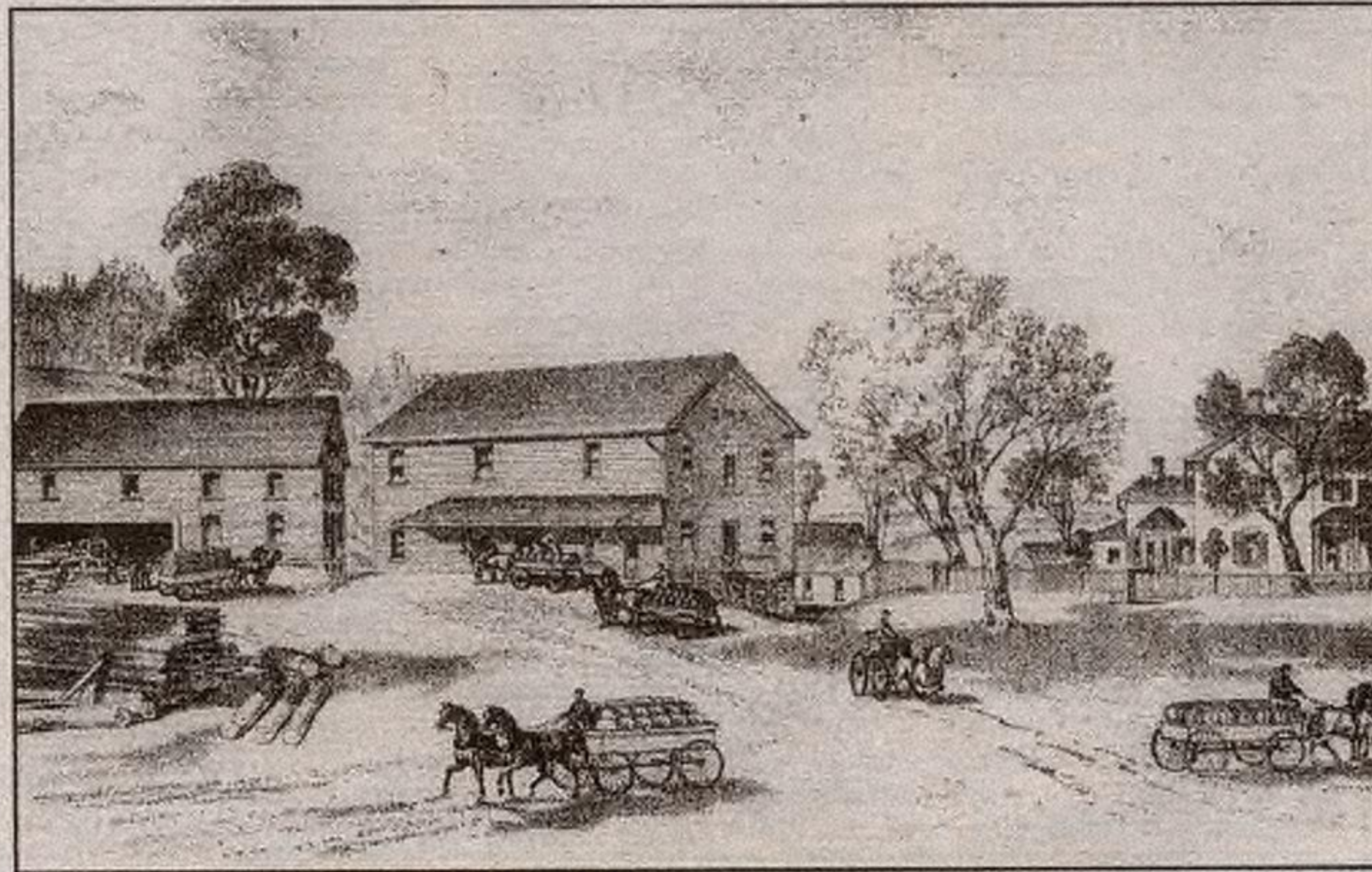
opers who want to push the edge of the envelope," is to have a modern secondary plan that can sustain review at the Ontario Municipal Board.

While the proposed secondary plan doesn't require any new roads or traffic lights—gravel sides on roads will be encouraged to slow traffic and maintain the rural charter—a whole system of public trails is proposed, linking key open space areas.

Five Glen residents want the Town expand to what the consultant called a "firm, hard edge" for the hamlet boundary, including Rick Fogal, husband of Ward Three Councillor Jane Fogal, who declared a conflict on the issue.

Fogal owns 8.5 acres on the southwest corner of the Eighth Line and 22 Side Road, which he wants included in the hamlet so he could hook into the Town water system and develop his land into five or six lots.

Fogal said while the "heart and soul of Glen Williams is located in the river valley...the character, history, heritage (of a hamlet) need people to keep it vibrant (and development) along the Eighth Line is not going to damage the character of the



Flour, Saw Mill and Residence of Jos. H. Williams Esq., Glen Williams. — Halton Atlas 1877

Glen."

Eighth Line resident Mary Lou Trant also cited concerns with water quality and quantity in requesting that their property be included in the hamlet. A lawyer for Rick and Sally Stull said the boundary should be expanded to include his client's 100 acres on the northwest side of Eighth Line and 22 Side Road.

Henry Misiak argued his eight acres on 22 Side Road should be included in the Glen so he can develop an affordable housing project for seniors. An agent representing land-

owner Al Piluti argued his property on the west side of Confederation Street should be included as an area of logical and appropriate growth.

Former councillor and Glen resident Alf Spence said the residents of the new Summertime estate subdivision are trespassing on his land, and one downed fence left him with "a herd of cattle running around on million dollar lawn."

He said Phase Two of the development should be scrapped as well as fencing installed along his land and Phase One homes.

Spence said he plans to mine up to one million tonnes of gravel from his land might not be compatible with the expensive homes planned for the area.

The first applause of the night from the approximately 125 people who jammed the Council Chambers, was for Wayne

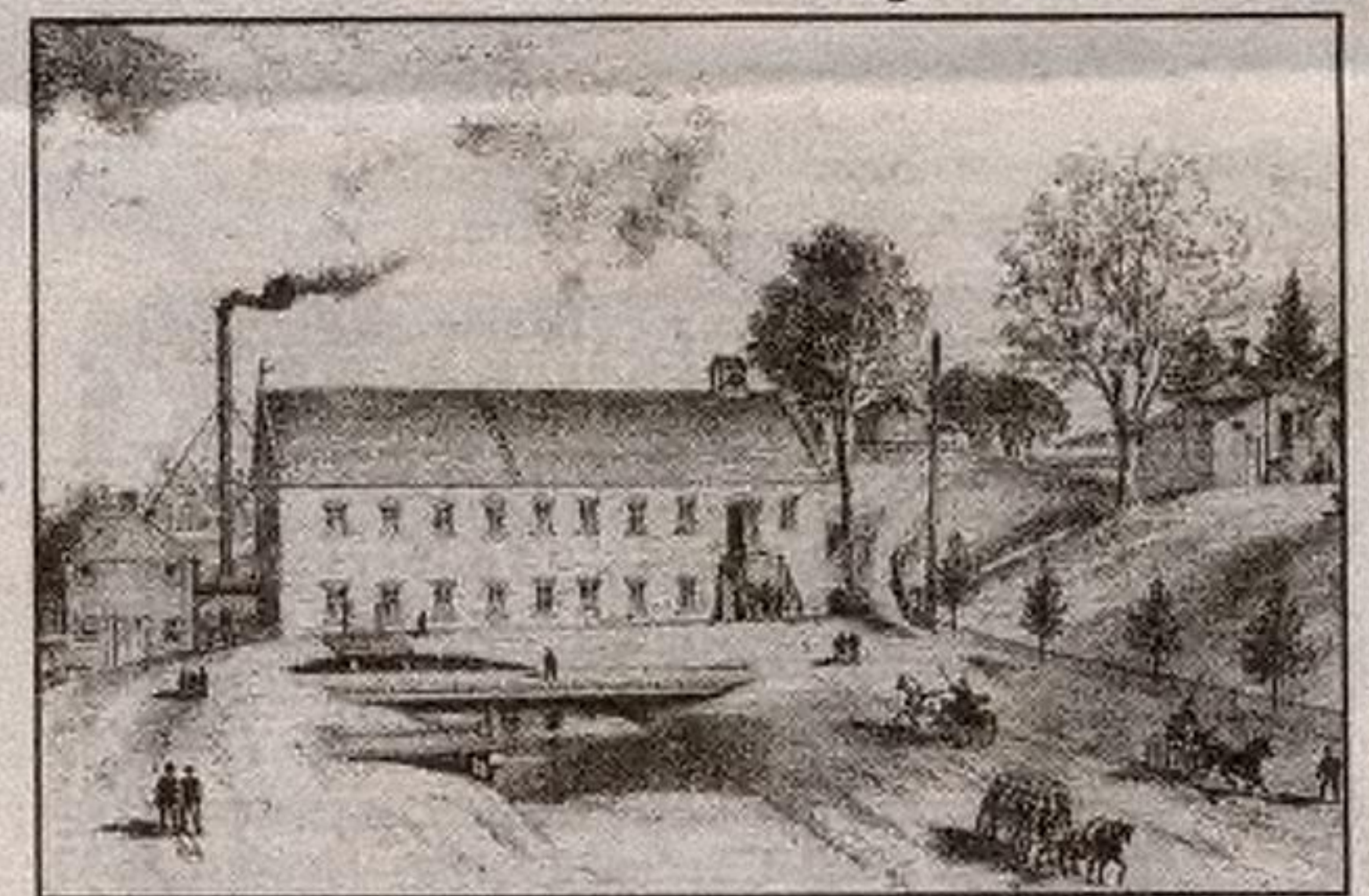
Van Hinte, an executive member of the Glen Williams Community Association (GWCA.)

He said the proposed secondary plan is "agreeable and could go forward," and cautioned the character and scale of the hamlet could be lost if Council doesn't have a plan.

"...I trust it will be to keep it compact and not allow the urban sprawl to go in and exceed the boundaries that have been presented today," Van Hinte said.

Two residents, Don Ablett and Phil Lewin, urged councillors not to add any more land into the proposed secondary plan that resulted in many tough compromises by Glen residents and developers.

As per policy, councillors made no comments at the public meeting, saving debate until staff comes back with a report in several months, incorporating comments from the public meeting.



Woolen Mills and Residence of B. Williams Esq., Glen Williams. — Halton Atlas, 1877.

EWAG NEWS

Please note that the EWAG Community Services Office and store will be open from 12:00 - 4:00 pm. during the week of February 18 to February 22, We will re-open at our regular hours the following week.

Valentines Day will soon be upon us! Join us on February 14 for a Potluck lunch and Valentine Bingo, all starting at 12:00 noon. There will be no charge for lunch but Bingo will be \$1.00 per person to play. All are welcome. Call Lynn for more information. Our famous "Stuff-it-Sale" will be the sale of the month in February at our thrift store. A very popular sale so come in early and get the best buys.

If you are interested in reading, you won't want to miss coming out to the EWAG Book Club. We meet for approximately an hour once a month and discuss the virtues of the Book of the Month! A must-join group for any avid reading fan.

Keep Tuesday, April 30 circled on your calendar!

Smile Theatre will be coming to Rockwood and you won't want to miss it. Entertainment at its best. Advanced tickets will be \$7.00/person and \$10.00 at the door. More information to come.

Tax season will soon be upon us. We will be holding a free Tax Clinic for those who qualify. You are eligible if your household income is less than \$15,000 and less than \$25,000 with dependants. This will be held the evening of March 20 and appointments are necessary.

Need photocopying? Laminating? Faxing? We can do it all at a minimal charge at the office here. If you need any government forms we can help you with that as well. Food Bank is available on Wednesdays by appointment only from 1:00 - 4:00 pm. We are located at 126 Main St. S., Rockwood. Our phone number is 856-2113. Our office hours are Tuesday to Friday from 10:00 - 4:00 pm, and the store is open Saturday from 10:00 to 2:00 pm.

Welcome ABOARD!

Enjoy a fiesta aboard Carnival's floating resort ELATION!
Sail from Los Angeles to Puerto Vallarta, Mazatlan and Cabo San Lucas.

AIR FARE & 7 DAY CRUISE:

Toronto

from **\$1197**

Terms and Conditions
Prices are CAD per person based on double, based on category 4A.
Rates are based on select April sailings. Port charges, taxes and gratuities are additional.
Transfers, air transportation related taxes and fees are not included.
Timing and availability correct at time of printing. Restrictions apply.



Fun Sun  **Carnival**
VACATIONS YOUR KIND OF FUN

B.C. Registration #1404 - 4 Ontario Registration #2399411 - Issued Jan 24/02 - Fun Sun Vacations Ltd. A1485

TED TYLER TRAVEL SERVICE LTD.

"Best Price, Best Service Since 1972"

519-853-1553 • 888-833-8953 • Fax: 519-853-1559

379 Queen St., Acton, Ont. L7J 2N2