

Halton cuts development charges

Halton Region approved its new Region-Wide Development Charges By-law effective August 31, 1999. Highlights of the new by-law for industrial/commercial properties follow:

The development charge for new industrial and office buildings will be discounted by 50 per cent from the full cost-recovery of \$4.78 to \$2.39 per square foot.

The development charge for new retail buildings will be discounted by 25 per cent resulting in a \$3.58 per square foot charge.

The development charges for expansions of industrial buildings or up to 50 per cent of the existing building's square footage will now be exempt from paying any development charges.

Expansions of commercial buildings will continue to be exempt from development charges on the first 10,000 square foot or 25 per cent of the total floor area of expansion, whichever is greater.

The current deferral policy for non-residential development charges will be extended from a five to 10 year period (except subdivisions)

with amortization at prime rate.

"This new development charge by-law strikes a delicate balance between the need to secure sufficient capital financing to provide for future infrastructure and the need to remain competitive with other municipalities," says Regional chairman Joyce Savoline. "Remaining competitive is

critical if we want to ensure that Halton gets its fair share of new industrial/commercial investment and the associated business tax revenue and employment opportunities that it brings. Halton is sending an important message to the business community that it is indeed open for business."

The Region's new development charges by-law was created in response to the passage of a new Development Charges Act, 1997 by the Province on March 1, 1998. The Act specifies that all municipalities must establish new development charges by-laws by August 31, 1999. The Act sets out clear rules that must be followed for a municipality to pass a development charge by-law.



CLOWNIN' AROUND: Jimbo the clown put on a happy face, and painted the faces of Liny and Jan-Willem Lamberink during the grand opening of the \$1 million Acton branch of the Halton Community Credit Union on Saturday. The children's father John Lamberink is on the board of the Credit Union. - Frances Niblock photo

ROCKWOOD POLICE BEAT

Guelph OPP have charged a Rockwood man with assault causing bodily harm after a domestic dispute with his 28-year-old common law wife at their Main Street home on Aug. 12.

Police found the victim lying on the ground outside the

house with several bruises, scrapes and cuts on her body. A pullout couch had been closed on her head during a fight with the 47-year-old male. She had also been pushed down some stairs and kicked after she got outside.

KIDS' corner

Food FACT:

IRELAND IS THE NO. 1 MILK-DRINKING COUNTRY IN THE WORLD. THE NATIONAL DAIRY COUNCIL ESTIMATED THAT EACH PERSON IN THAT COUNTRY DRINKS 164.42 QUARTS OF MILK PER YEAR.

KC998101

Music Search
There are 14 music-related words hidden throughout the scrambled puzzle below. See how many you can find and circle. The words go horizontally and vertically, backward and forward.

BAND	REHEARSE
CHORD	RHYTHM
DISCO	SCORES
HARMONY	SCALE
INSTRUMENT	STRUMMING
MELODY	TUNE
PITCH	VOCALS

S C A L P Y N O M R A H
 E N T N I S T R E M M U
 N E E L D C S E L A C S
 T N E S R U M I O N G O
 U U S T O C S I D I S M
 H T R E H A R N Y T H M
 A L A S C L E S O R C E
 R B E A N S V T M M I N
 Y N H A S C O R E L V O
 V D E C O R C U L I N C
 O M R H Y T H M O N E A
 C E T T S C R E N S M P
 A L U I V B A N D T U I
 L M M P O C M T Y U R T
 S T R U M M I N G M U C
 R O H C L A Y C S N T H

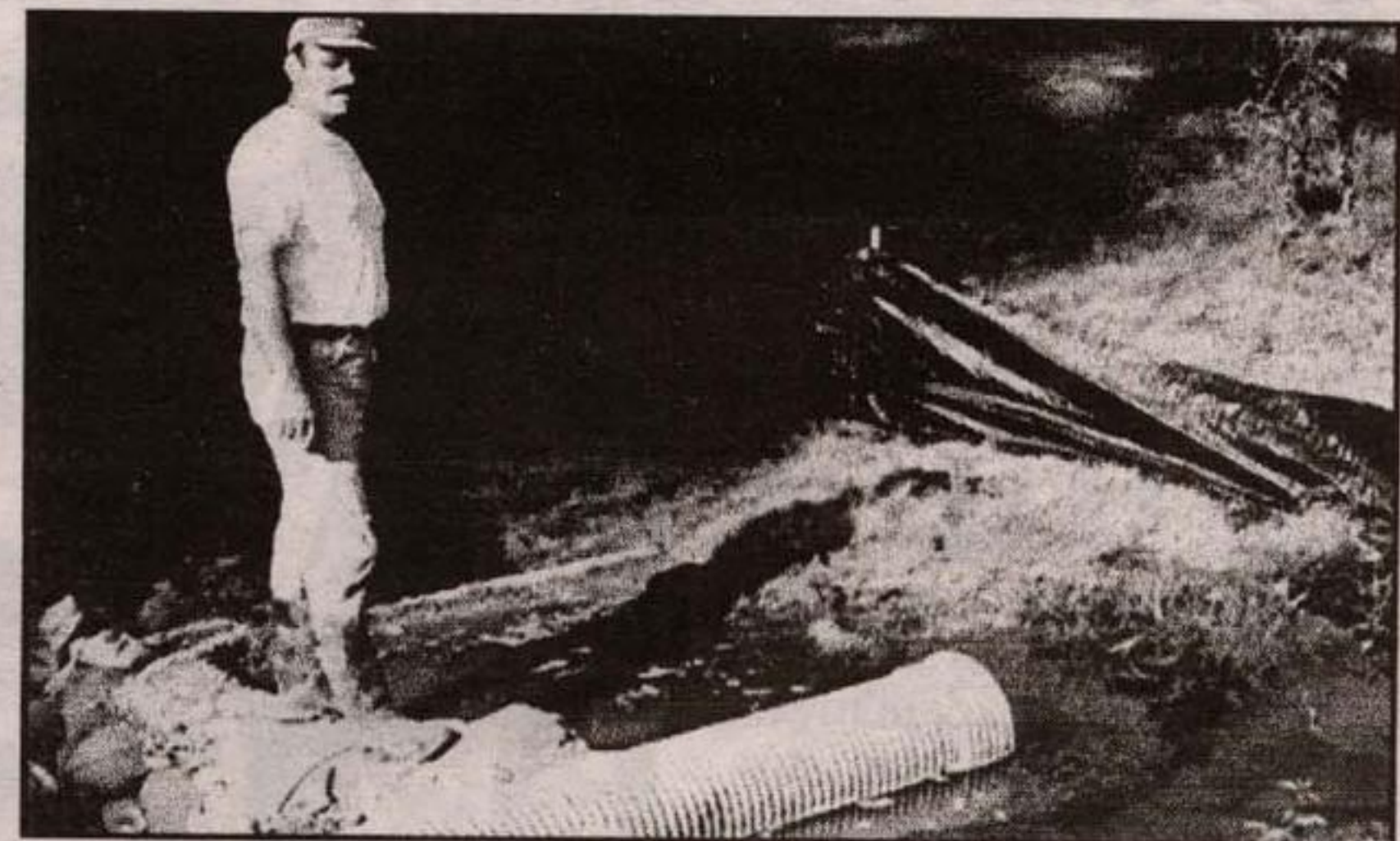
KC998103

TIMELINE

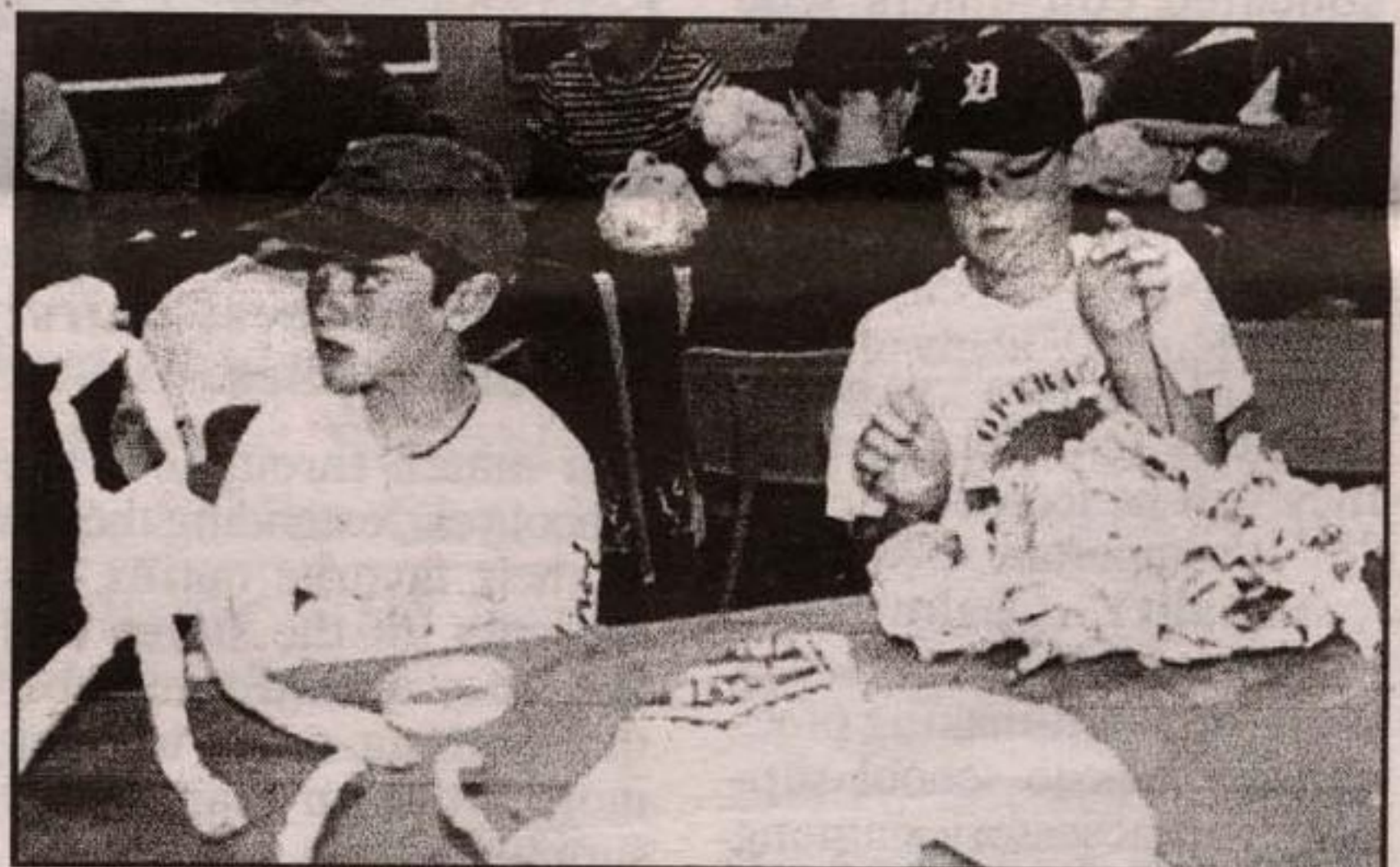
783 1784 178

- IN THIS YEAR, ENGINEER OLIVER EVANS INVENTED AN AUTOMATED PROCESS FOR GRINDING GRAIN AND SIFTING FLOUR.
- THE AMERICAN CONGRESS RATIFIED THE TREATY OF PARIS ON JAN. 14, FORMALLY ENDING THE AMERICAN REVOLUTION.
- ON NOV. 24, ZACHARY TAYLOR, WHO WOULD BECOME THE 12TH PRESIDENT OF THE UNITED STATES, WAS BORN IN ORANGE COUNTY, VA.

KC998105



WEEKEND WORK: With a contract calling for the job to be complete in 25 days, Metric Contracting's Dan Racic and his crew worked on Saturday to build a small dam to divert the flow of Black Creek under Hwy. 25 at the library. They need to dry the creek bed so the crumbling culvert under the road can be replaced. - Frances Niblock photo



FUTURE ARTISTS: Sean Mathison (left) and Philip Kuypers show off their art work at the Senior Creative Art Camp at the boat house in Prospect Park. - Ellen Piehl photo

Music Scramble

Unscramble the letters below, and learn about different types of music.

1. A symphony and an opera are considered to be this type of music. S C L L I C A S A
2. Jazz music, which was developed around 1890, is native to this country. E A I A C R M
3. This popular music consists of rhymed verses being recited over recorded or live instrumental music. P R A
4. This type of folk music generally is played on banjos and guitars. U S G A L S B R E

1. Classical 2. America 3. Rap 4. Bluegrass

Answers

KC998104

new word

treble

The highest part, voice or range

KC998106

ACTON SENIORS' RECREATION CENTRE

By DOTREDEKOP

We had a great day for our cruise on Stoney Lake. The Inn served a lovely buffet lunch and then we walked to the boat. The sun and clouds took turns and there was a nice breeze. The captain pointed out different spots and in between played music soft enough that we could talk and laugh. We did a lot of both. Bonnie got wet and she said it was when we cut across the wake of another boat. We don't know but there was a lot of water coming from someplace. She took it all in good part.

Don't forget our BBQ Friday, Aug. 20 at 11:30 a.m.

We go to Rama on Wednesday, Aug. 25. We leave at 8:45 and return approximately 6 p.m. \$7 includes lunch. Try the bread pudding.

Alma Braida and Henry Wedge got mooners last Thursday. The crib bunch thank Bill Sikora for the beautiful peacock feathers.

How they SAY it in...

English: FOOT

Spanish: PIE

Italian: PIEDE

French: PIED

German: FUß

Latin: PES

Did YOU KNOW?

YOU PROBABLY KNOW THE DATE THAT CHRISTOPHER COLUMBUS LANDED IN THE NEW WORLD — OCT. 12, 1492. HOWEVER, DO YOU KNOW WHEN HE SET SAIL ON THIS FAMOUS VOYAGE?

ANSWER: AUG. 3, 1492

get the PICTURE?

Can you guess what the bigger picture is featured here?

ANSWER: A WATCH

CENTRAL ONTARIO AUCTIONEERS

Professional Auction Services

Estate & Industrial n Certified Appraiser

Consignment Welcome

NORM WEBSTER
 (416) 523-6645 (pager)
 (905) 873-7633 (home)

R.R.#1, Limehouse ON

WATCH FOR NEXT AUCTION DATE!!