

Credit Union hopes for June office opening

It should be much easier to navigate the Becker's plaza parking lot this week when crews backfill the foundation of the new Halton Credit Union home on the corner of the plaza at Churchill Road and Queen Street.

Getting in and out of stores in the plaza has been difficult as the work site has

been fenced while the foundation was dug.

"There's supposed to have that (the foundation) filled in so that will give them more space and clean up the parking lot for the tenants and shoppers in the plaza," said Halton Credit Union manager Harold Postma recently.

Project manager, Tom Theriault, with First Finan-

cial Building Corporation said once the foundation is filled in they'll remove the fences and there will be a lot more room to park.

"After the foundation is backfilled we'll bring in some plumbers and bricklayers to do some roughing in and we should see steel in the air by March 1," Theriault said.

One of the main features

of the new Credit union, which will face Churchill Road, will be the drive through automated banking machine.

While the existing plaza entrance and exit on Churchill Road will remain unchanged, the entrance and exit to Queen Street will be relocated approximately 30 feet further away from the

corner.


Theriault said the parking lot has been redesigned to accommodate the new Credit Union parking and the drive-through and the Town has required the Credit Union to install a curb on the plaza and the Brewer's Retail property.

"That will stop the light jumpers that go through the

parking lot. It's totally insane this small section between here and Tim Hortons and the gas station - you almost need a traffic cop in the parking lot," Theriault said.

The Credit Union hopes the new building will be ready to open in late May or early June. Its current home at 273 Queen Street is for sale.

Rockwood
RP
MOTOR PRODUCTS



1993 Cadillac Seville STS **\$13,995**
Rockwood • 856-2222

Newstand price: 40¢ + GST

THE NEW TANNER

Your Hometown Newspaper

Volume 2 No. 8 Thursday, February 25, 1999

1998 Mazda Millenia 'S'



Fully Loaded • Brand New
0% Financing Available
Up to 60 Mos. • 1 Left!

Achilles MAZDA
357 Queen Street
(519) 853-0200

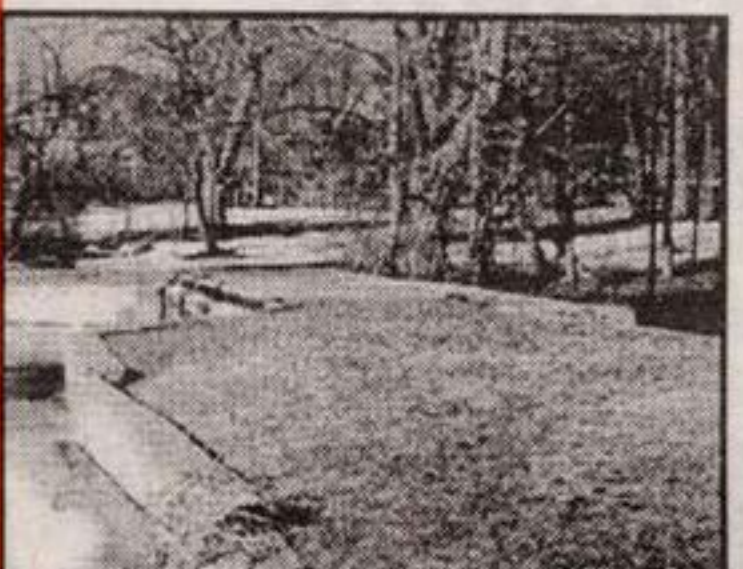
What's Inside



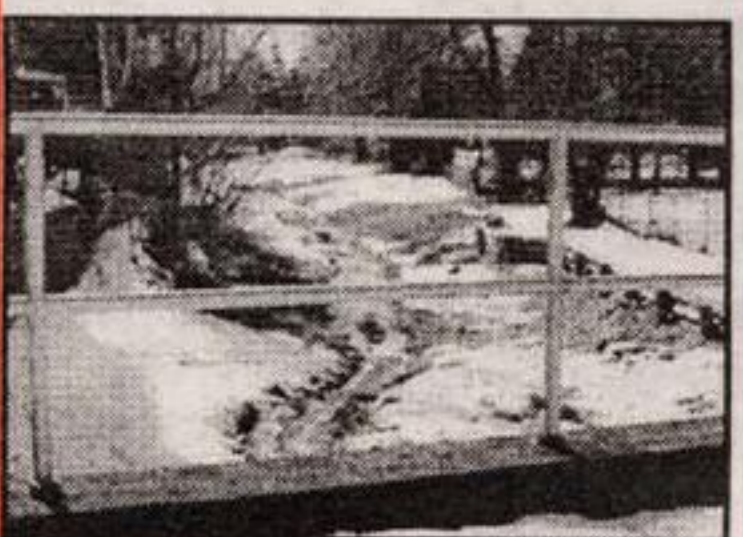
Acton is celebrating 85 years of Scouting this year. See page 7.



A pelican on the pond? Maybe, but it is real. See page 12 and wonder.



The town wants to put a mini-park at the Fairy Lake dam. See the story on page 15.



A student survey favours turning the Bovis Channel into a natural bed for the creek. See page 3.

Village Manor residents need homes

Acton home will close in four months

Mental health officials are confident homes will be found for the 29 Village Manor residents who received eviction notices last Thursday, but there's no guarantee that the new homes will be in Acton.

The Acton care home will close in four months and the search is underway to relocate the residents, some of whom are former psychiatric patients and some of whom have physical disabilities and require nursing care.

A court-ordered receiver and manager has been in control of the 39-bed home since July while a search was conducted for a suitable buyer.

"As a group of agencies we're committed to work with the families and the residents to find them new homes," said Canadian Mental Health Association executive director Sheila Flynn-Kingston.

"Our main concern is the residents and their families and how to make the move that is least disruptive for them. We're really are trying hard to relocate people who have been in Acton a number of years, in Acton," Flynn-Kingston said, adding that beds might be available in Vineland, Niagara or Hamilton through a Hamilton Psychiatric Hospital program.

Both Re-Entry and Summit House staff are also looking for local beds along with staff of Community Living of

Cont. on Pg. 2

Catholic board and teachers ratify deal

More than five months of labour unrest in Halton five Catholic high schools ended with ratification of a new three-year contract by both the Halton Catholic District School Board and its 332 secondary school teachers.

Trustees accepted the new deal in a special meeting on Monday night and the teachers voted 74 per cent acceptance in voting held during and after school on Monday.

The deal means no change in teacher workload from the previous contract that had them teach six of eight periods a day. Salaries will be frozen for two years and in the third year teachers will receive three raises totalling 3 per cent.



WINTER FAIR: All set to participate in some of the activities planned for Saturday's first winter fair are front row Justine McIntyre, 5, and brother Brett, 2, centre row: Maja Vermeulen, 8, and sister Lauren, 6, and Emily Henderson, 13. Fair events, planned as fundraising for a new Agricultural Society building, will be held from 6 to 9 p.m. in Prospect Park. - Maggie Petrushevsky photo.

Elliott pushing for Poplar/Crescent project

BY FRANCES NIBLOCK
The New Tanner

Acton Councillor Norm Elliott was expected to argue against a staff suggestion to remove \$275,000 earmarked

for phase one improvements to Poplar Street/ Crescent Street at a capital budget meeting yesterday (Wednesday).

At the January 13 capital budget meeting Councillor Elliott asked that the money to do the engineering for the

reconstruction of Poplar/ Crescent Streets project - a project that has been bumped from the last few budgets - be included this year. The area has experienced on-going drainage and flooding problems.

"I'm unhappy that's it's

not in the budget," Elliott said prior to the meeting.

"I think the people living there have a real fear that it (the project) will get lost in the shuffle and end up in limbo for some years if it's not kept front and centre,"

Continued on Pg. 2

Doing It Right



VALUE PACKAGE INCLUDES

- 5-Speed Manual Transmission • 60/40 Fold Down Rear Seat • Intermittent Wipers • Body Side Mouldings • AM/FM cassette stereo



1999 Toyota Tercel 4 Door

Lease for **\$193** + tax

per month for 48 months.

Lease includes freight & P.D.E.

or choose

4.8%

no limit financing for up to 60 months

KNOW YOUR LEASE OPTIONS

DOWN PAYMENT	MONTHLY PAYMENT
\$0	\$213
\$1,000	\$191
\$3,000	\$145



GEORGETOWN TOYOTA SALES

15 MOUNTAINVIEW RD. N., GEORGETOWN 877-2296 Tor. 874-4276

WEBSITE at www.haltonhills.com/toyota or E-MAIL at toyota@aztec-net.com

*Based on a 48-month walkaway lease. First payment and security deposit due on delivery, based on 96,000 kms. Additional km charge of 07¢ if applicable on the TERCEL

Only \$888 down
Nicely equipped for
\$13,890 MSRP