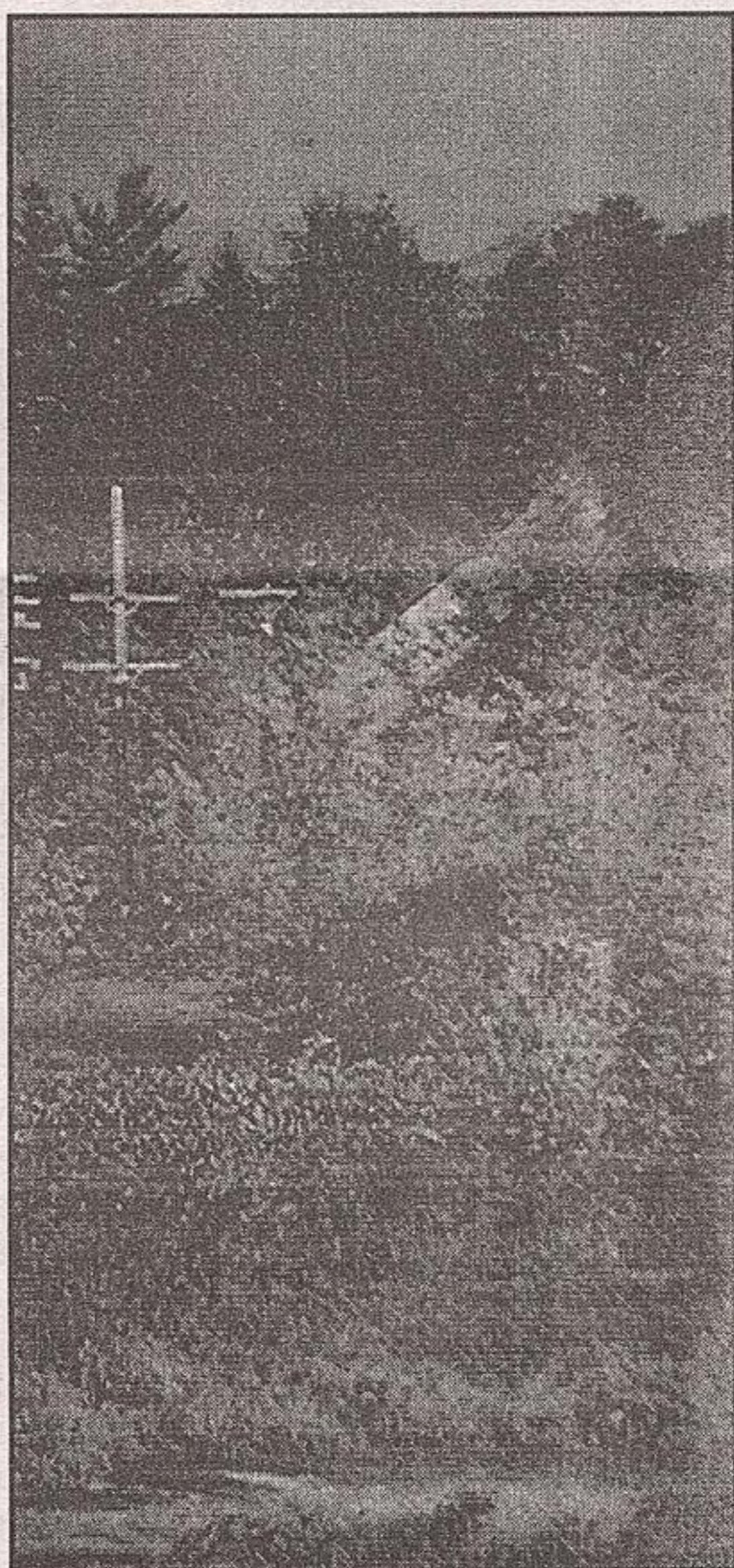
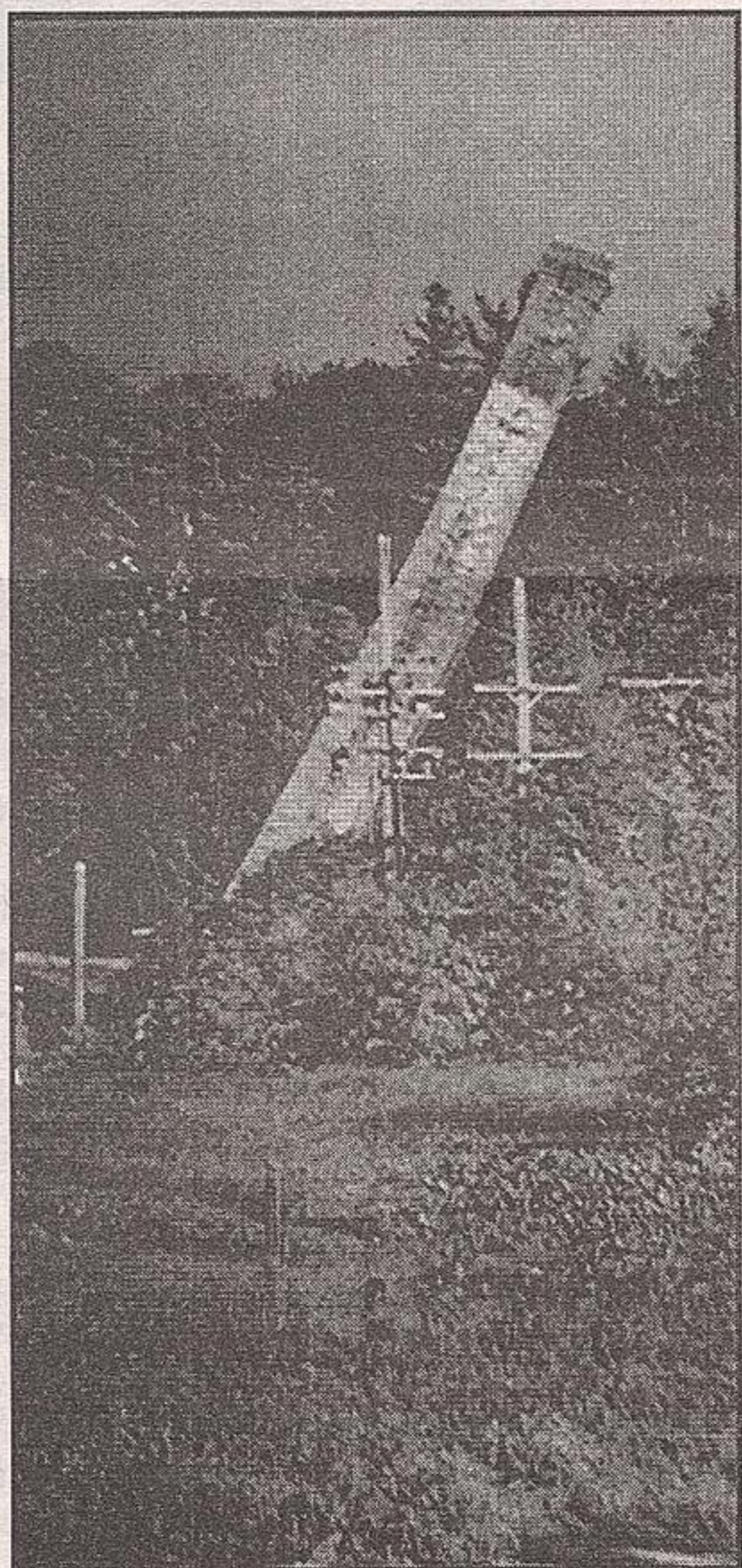
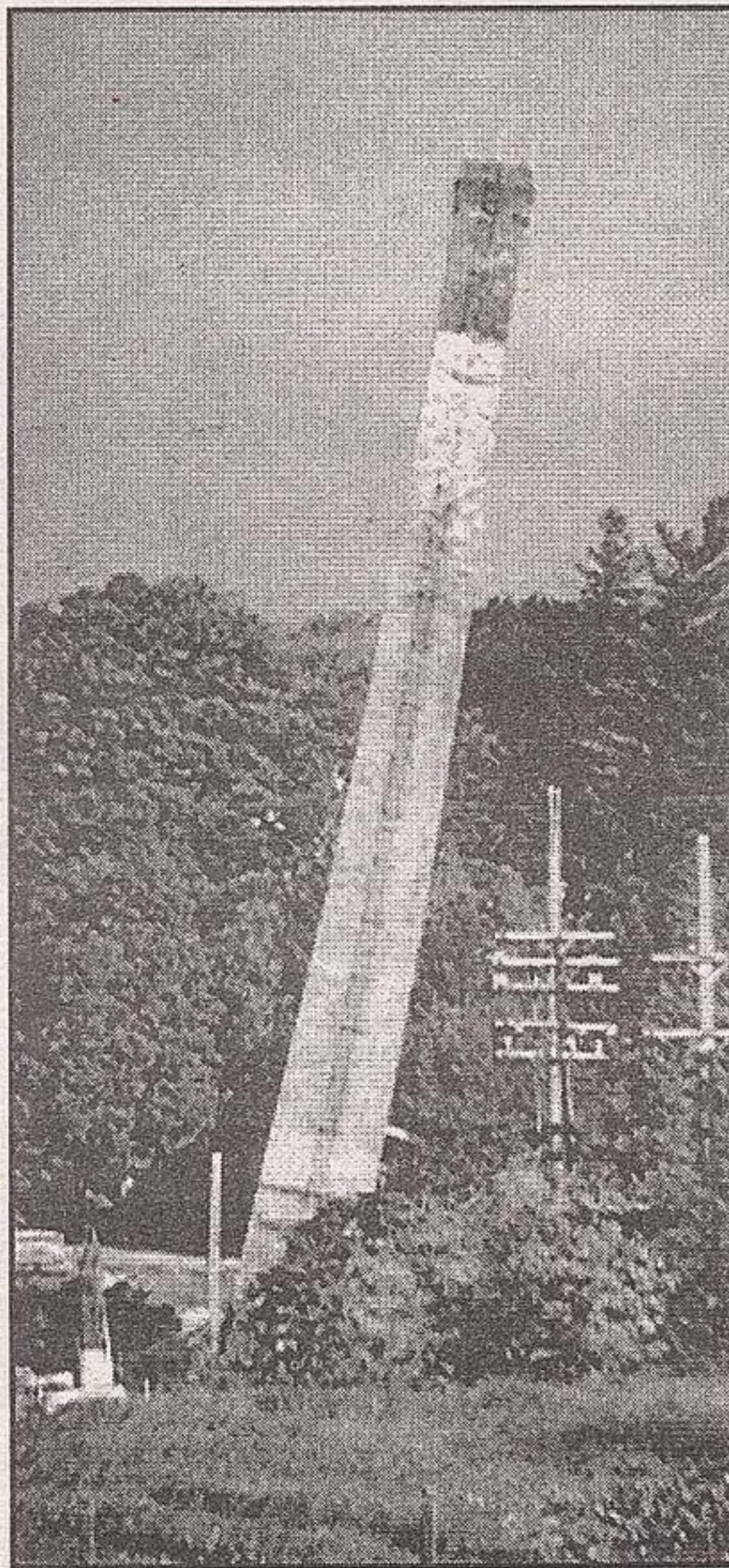
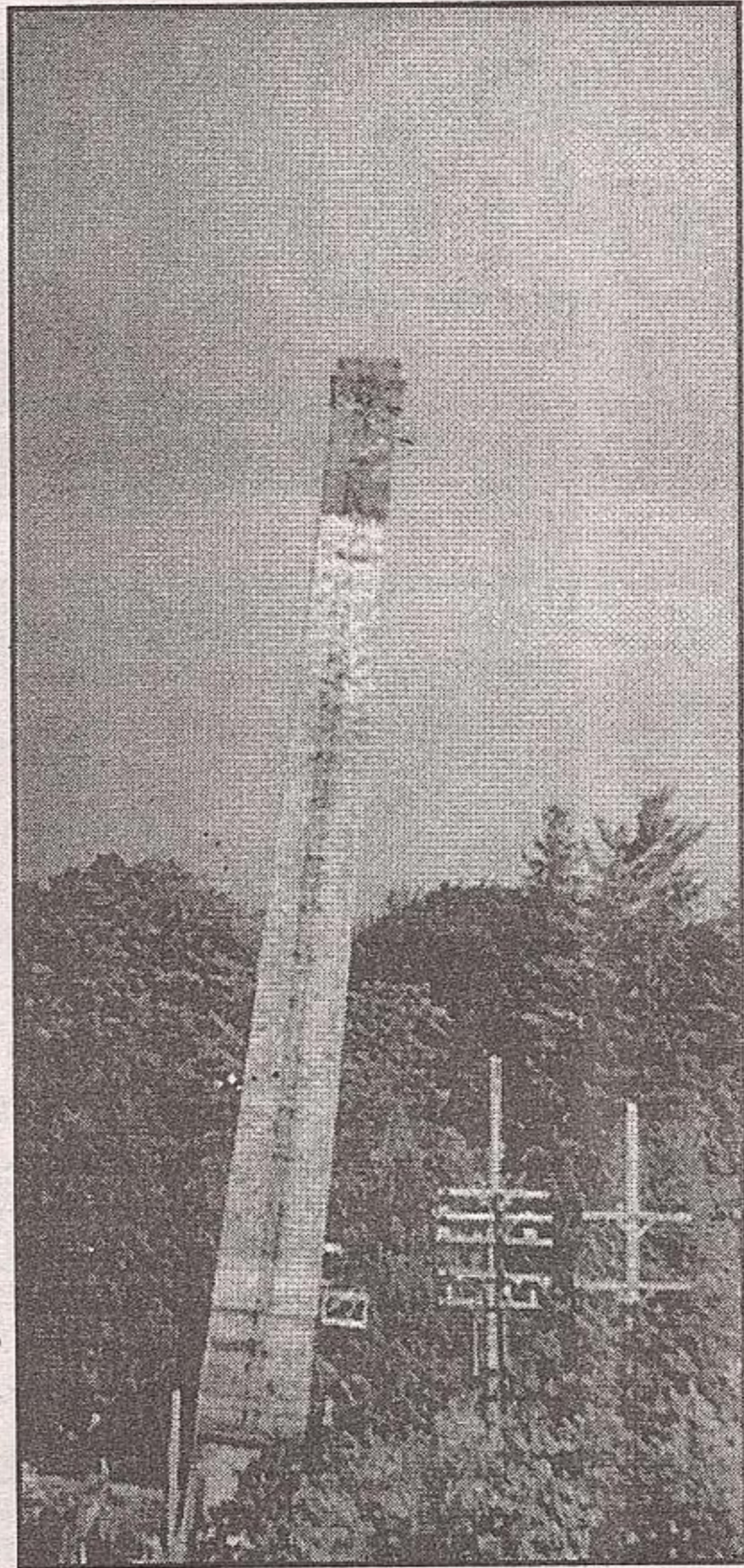
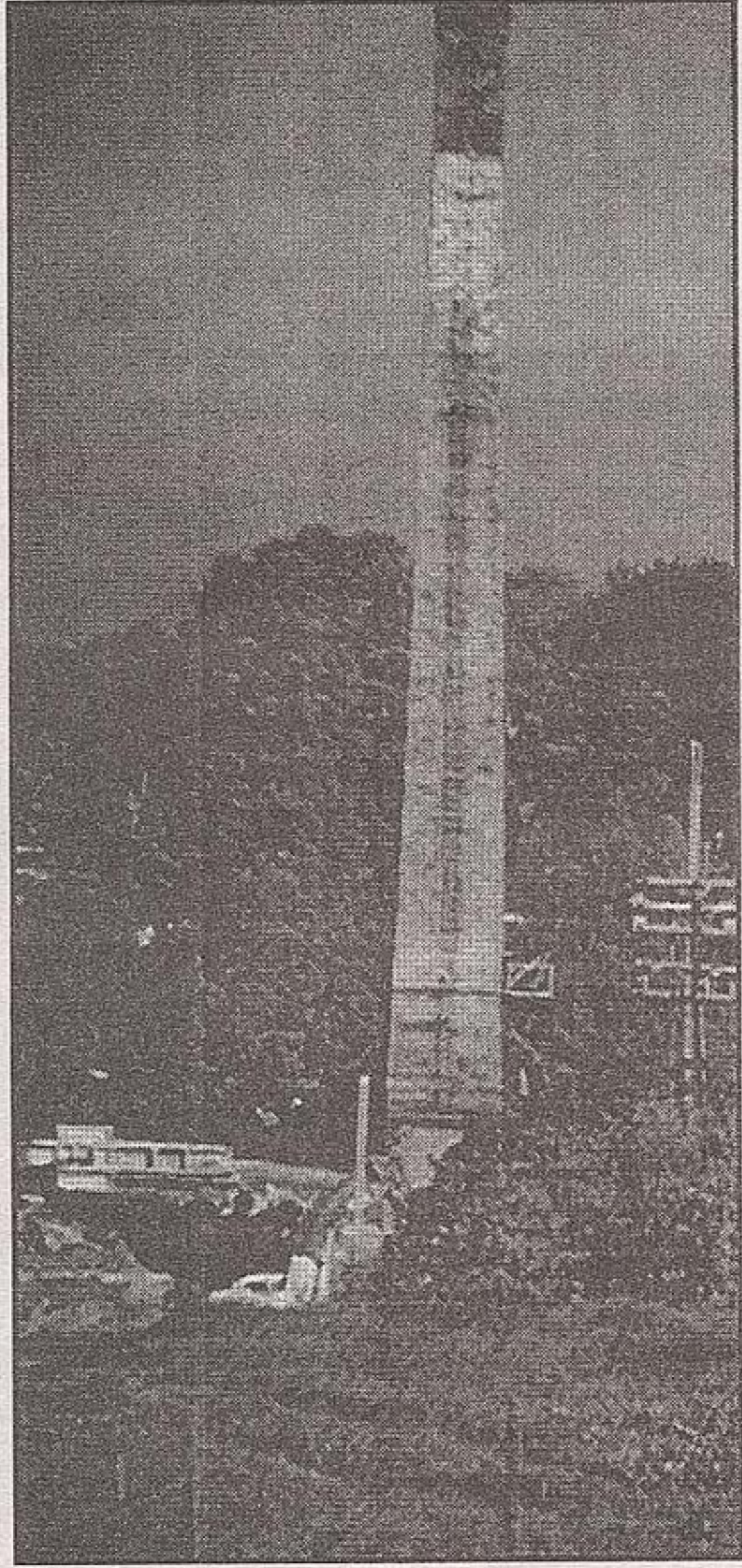
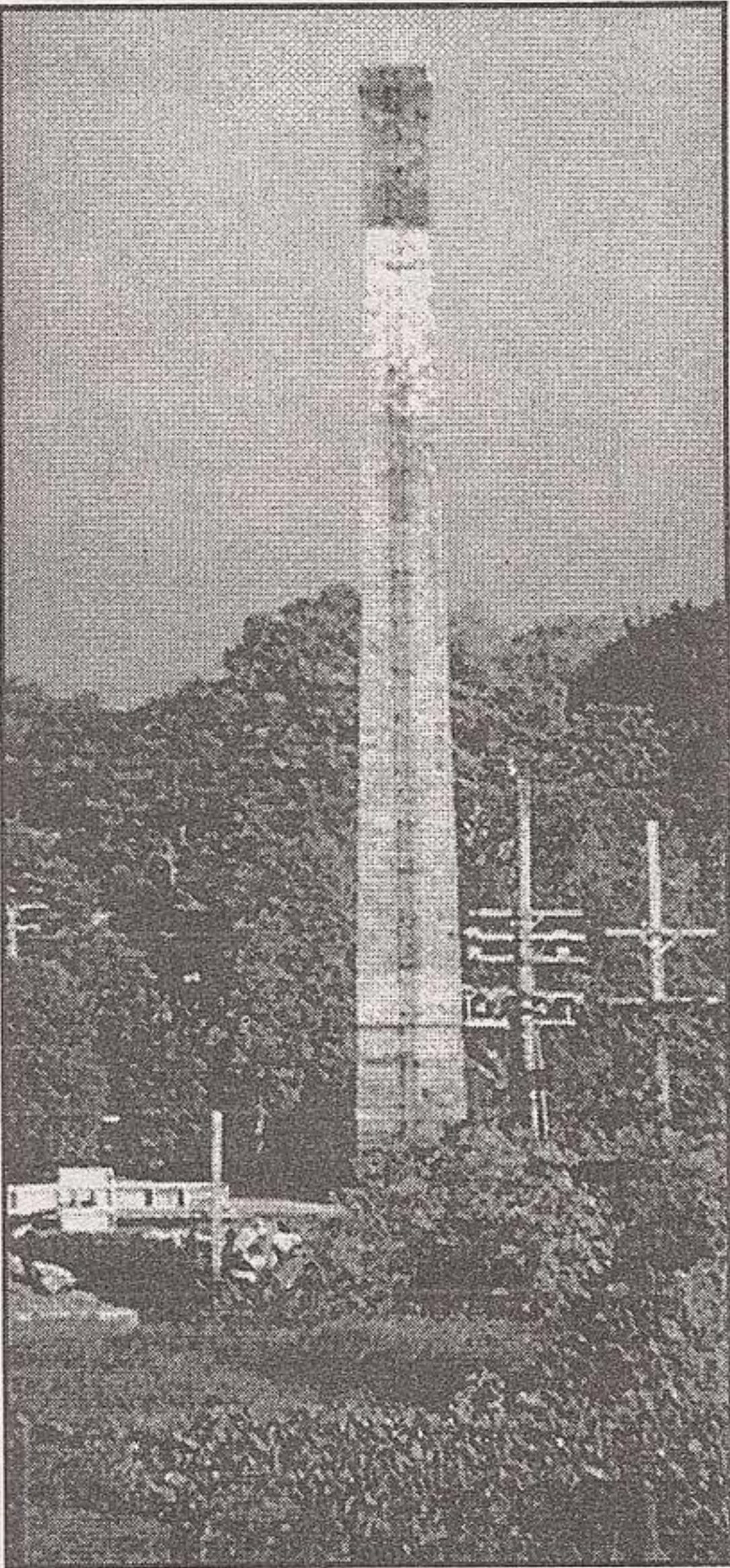


# Beardmore chimney comes down



**IN THE BLINK OF AN EYE:**  
 The chimney at the old Beardmore plant came down on Wednesday morning. Within seconds a 'jack-hammer' on a backhoe made a few holes in the chimney base, then approximately 100,000 bricks fell down on one another. One of the few remaining buildings are the light leather and the AIC building. — *Angela Tyler photos*

**TRAVELPACK ROYAL** 

**LAST CHANCE!** **October UK & Ireland Seat Sale**

**TORONTO - RETURN**

|   |              |
|---|--------------|
| <b>GLASGOW</b>  |              |
| DEPART: OCT 01, 08, 22 '98                                  | <b>\$309</b> |
| RETURN: OCT 16, 23, 30 '98                                  |              |
| <b>LONDON</b>   |              |
| DEPART: OCT 02, 09, 16 '98                                  | <b>\$299</b> |
| RETURN: OCT 13, 20, 27, NOV 07 '98                          |              |
| <b>MANCHESTER</b>   |              |
| DEPART: OCT 06 '98  | <b>\$309</b> |
| RETURN: NOV 04 '98  |              |
| <b>BIRMINGHAM</b>   |              |
| DEPART: OCT 06 '98 <small>return from STN or MAN</small>    | <b>\$319</b> |
| RETURN: OCT 21 '98 <small>Nov. 04, 07 '98 for \$299</small> |              |
| <b>DUBLIN/SHANNON</b>                                       |              |
| DEPART: OCT 11, 18 '98                                      | <b>\$529</b> |
| RETURN: OCT 19, 26 '98                                      |              |

For new bookings only from Toronto. Taxes, GST and service charges are extra. All offers are subject to availability. Subject to change without notice.



**Are you paying too much for out-of-country Emergency Medical Insurance?**  
**Do you want low rates, round-the-clock assistance, and a company you can trust on your trip?**  
**Ask us about HealthSelect Emergency Medical Insurance for the Healthy Snowbird.**  
**It's more coverage for less money.**

At the time of writing, our records of U.S. out-of-country emergency medical claims show...

- an emergency room visit for shortness of breath will cost US \$500 to \$1000. The most generous Provincial Health Insurance Plan will cover Ca\$122
- a single day in hospital will cost US\$3,000 to \$5,000. The most generous Provincial Health Insurance Plan will cover Ca\$570
- an air ambulance home will cost some US\$10,000. No Provincial Health Insurance Plan will cover this expense.

**What kind of travel insurance coverage do you really need?**



**Ted Tyler Travel Service**  
 379 Queen Street East  
 853-1553 Fax 853-1559

**We'll Make You Smile!!**

**House Calls Available**

**DENTURE SPECIALIST**  
**E. JUREVICIUS D.D.**

**Construction & Fittings of New Dentures**

- Same Day Repairs & Relines
- Free Consultations • Seniors Discount
- Specializing in Problem Lower Dentures

**ACTON DENTURE CLINIC**  
 16 Mill St. E., Acton **853-0079**

**BLUEBERRY BUCKLE**  
*quality cotton fabrics*

Visit my fabric room for a lovely selection of 100% cotton fabrics, quality patterns and notions

Home party service available

17 Stevenson Street Eden Mills, Ont.  
 519-856-9599 e-mail: peacock@sentex.net

**GLENLEA**  
*Drug Mart LTD*

Monday - Friday 9 - 9  
 Saturday 9 - 6 • Sunday Closed

**853-2220**  
 294 Queen St. E., Acton