

It's Worth The Drive ...

For Some **FALL FUN!**

Museum sponsors hike to old ruins at Kelso C.A.

Hikers are being urged to join a guided two-hour hike along one of the most scenic parts of Ontario's Bruce Trail on the Niagara Escarpment in Kelso Conservation Area.

Led by experienced guide Bill Brown, the fairly strenuous hike will start at 9 a.m. from the Halton Region Museum, located in

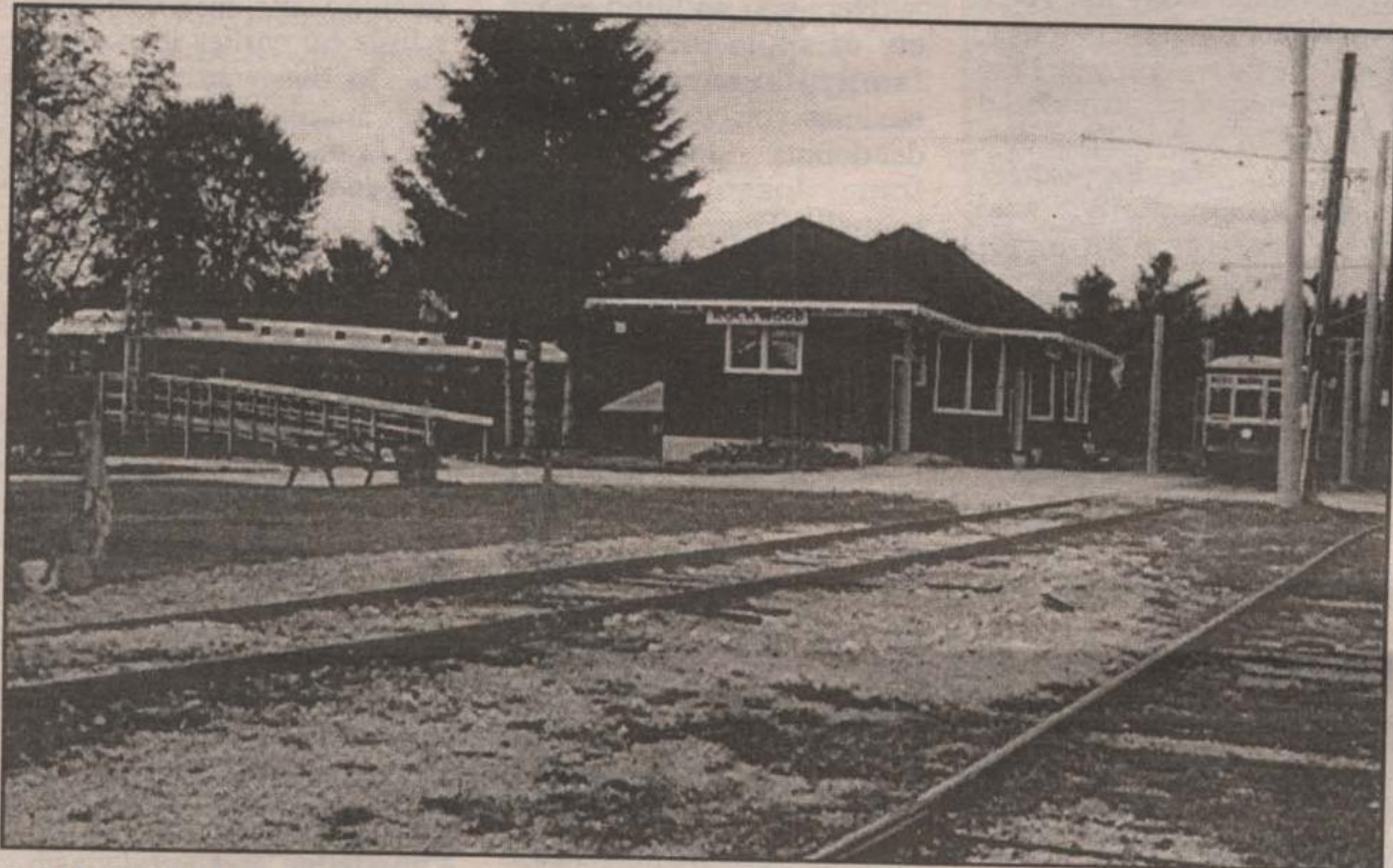
the heart of Kelso Conservation Area west of Milton. Participants should wear appropriate shoes and clothing and bring water bottles.

Features along the route will include spectacular views showing a panorama of fall colours, two former limestone quarries, and the standing ruins of the his-

toric Christie-Henderson lime kilns. The lime kilns, constructed in 1880 by D.D. Christie of the Kelso area, were used to burn chunks of limestone from a nearby quarry. The burnt stone was turned into powdered lime which was used for the production of mortar and plaster, and in chemical and iron and steel

production.

Hikers are advised to register early as spaces are limited for this very popular program. This event is free with regular entrance fees to Kelso Conservation Area, located 7 kms. West of Milton on Regional Road 28. Adults \$3.25; Seniors/Students \$2.75; Children \$2.25. To register and for more information phone 905-875-2200.



RAIL HISTORY: The Halton County Radial Railway, Ontario's only operating streetcar museum, is another big attraction in this area. One can start with a ride on a historic street car through two miles of forest, visit the gift shop and enjoy picnic facilities as well as inspecting the streetcars and railway cars restored on the premises. - Hartley Coles photo

Hours:-
Fri. 5 p.m. - 9 p.m.
Sat. 10 a.m. - 4 p.m.
Sun. 10 a.m. - 4 p.m.

15th Annual Milton Farm Museum Fall Craft Show

SEPTEMBER 25TH, 26TH & 27TH, 1998

Over 70 highly selected, quality Canadian Exhibitors have come together in this rural setting to showcase their crafts for sale to you. Choose from:- Florals, Jewellery, Clothing, Country Accents, Candles, Wooden Crafts, Santas, Snowmen, Christmas items and gifts for all occasions.

Admission:- \$4.00

\$1.00 Off with this ad.

Children under 12 free

Parking free



Location:- The Milton Farm Museum
144 Tremaine Road, Milton, ON.



Call (519) 756-4467 for info.

1-888-307-3276

Kindermusik

THE PREMIER MUSIC PROGRAM FOR YOUNG CHILDREN.

Ages 18 Months to 7 Years

Through the sheer joy of music and movement, Kindermusik encourages early learning and creativity in young children.

Classes starting mid-September 1998

For more information contact
Christine de Lestard at 905-877-3975

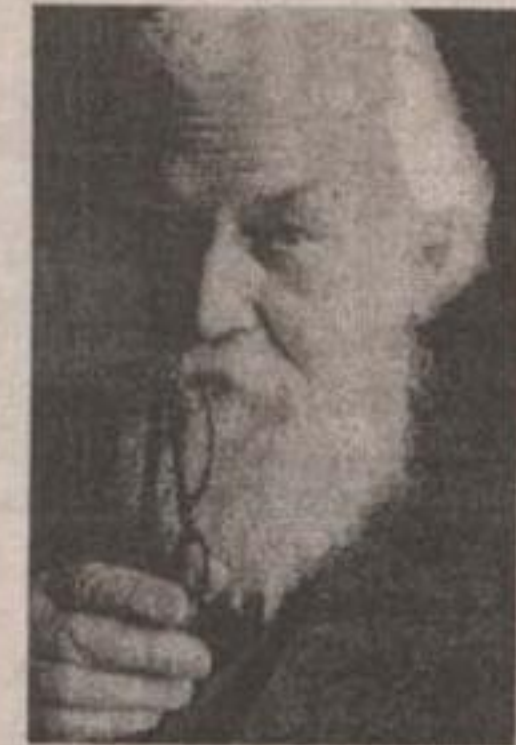


The Olde Book House

CLASSICS

A Book Lover's Delight!

Featuring
New & Out-of-Print
editions of:
the Great Classics,
Military History,
Canadiana, Biographies,
Home & Garden,
Children's Classics



A truly great book should be read in youth, again in maturity, and once more in old age.

Robertson Davies



ALICE IN WONDERLAND

Plus fine Gifts, Cards & Stationary

Mon. - Thurs. 10am - 5pm Fri. - Sun. 10am - 6pm

44 Eastern Avenue, Acton, Ontario L7J 2E5 (519)853-0092

Across from The olde Hide House

Make Your Move

1998 Mazda 626 LX

Get into Mazda's biggest event of the year.

Many 98 Models Still Available - HURRY IN!

Achilles Mazda

357 Queen St. E., Acton

519-853-0200 905-453-8965



Lease From Only **\$249⁰⁰*** per month
48 months OAC

- Automatic transmission
- Power windows and door locks
- AM/FM stereo with CD, clock and 4 speakers
- Driver and passenger-side air bags
- Air conditioning and cruise control

* Plus all applicable taxes. \$1800 down payment plus \$650 freight/PDE plus tax, based on 20,000 km per year. Lev = 12230. Lic extra.

Get in. Be moved.

