

It's Worth The Drive ...

For Some **FALL FUN!**

Autumn Adventures

start with a ride
on an historic streetcar
at the



Halton County Radial Railway,

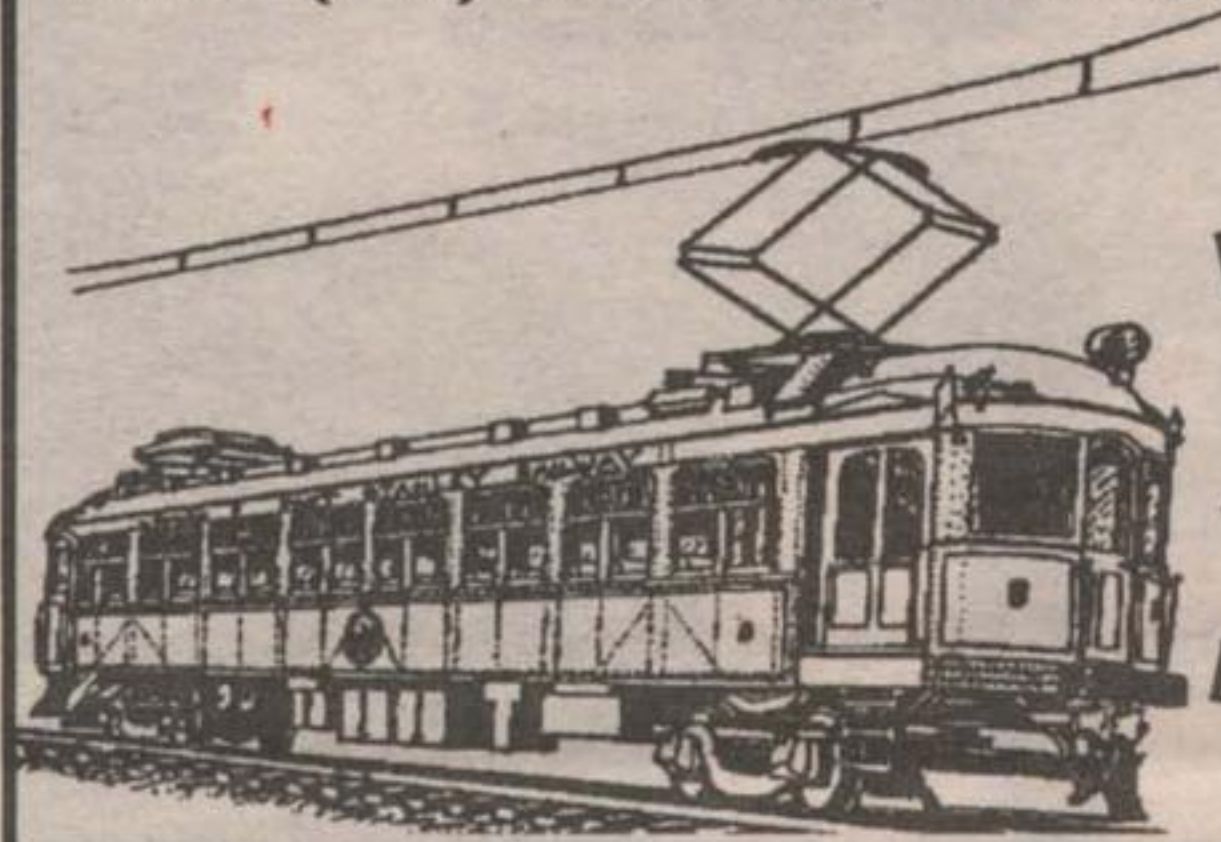
Ontario's operating Streetcar Museum.

Listen to the sounds of a bygone era as you
travel 2 km through a peaceful forest.

Open weekends and holidays
in September, October and November,
10:00 a.m. to 5:00 p.m.

13629 Guelph Line, Milton

Phone (519) 856-9802 for more information



Picnic Areas

All Day Pass

Living History

No wonder people enjoy north Halton

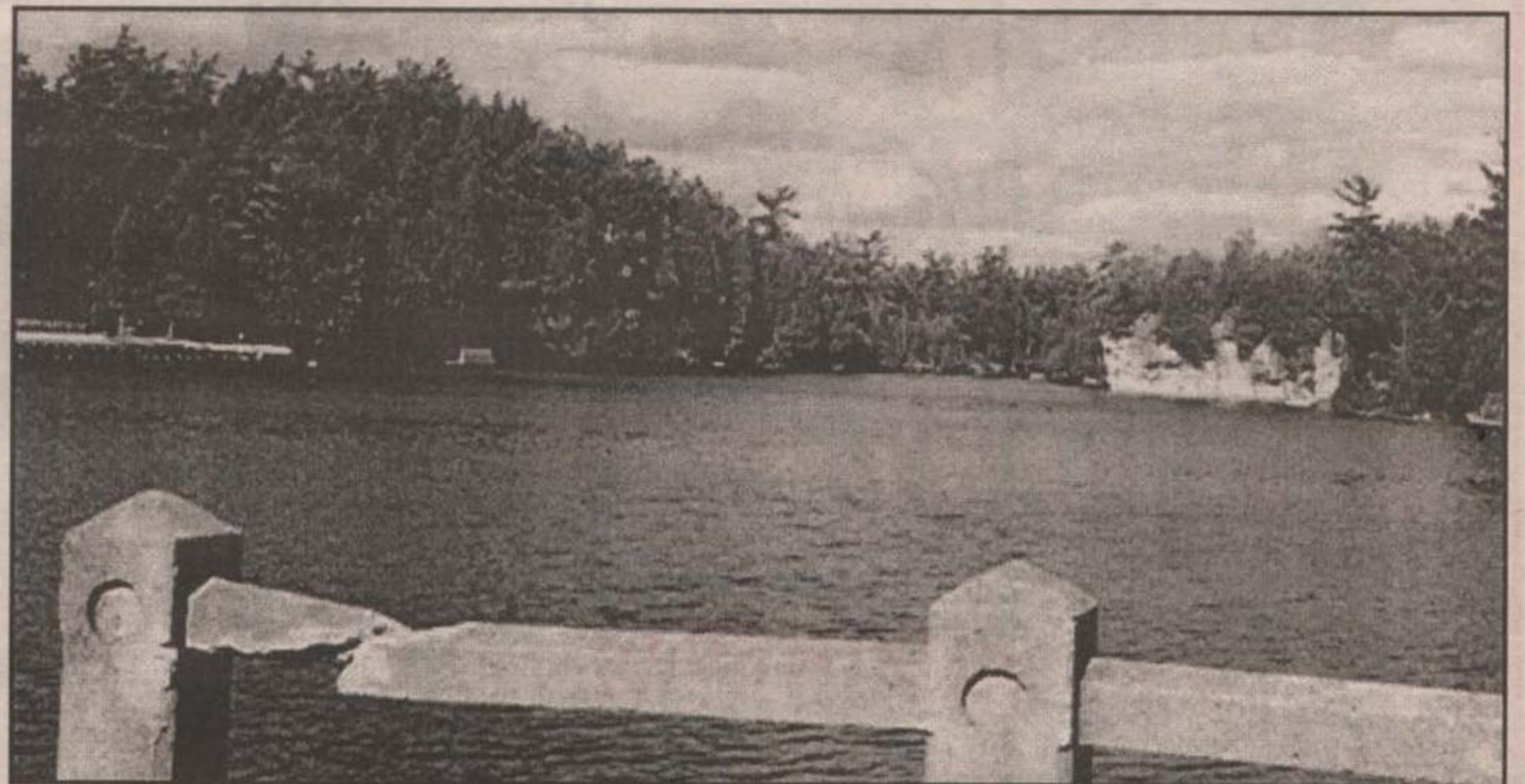
Continued from Page 7

we have some mighty fine
restaurants to choose from.

Halton Region Conserva-
tion Authority parks provide
hiking, climbing, sailing,
picnicking, wildlife and history
all within a few minutes
drive of Highway 401.

A bit further north, the
Grand River Conservation
Authority operates the
Rockwood Conservation au-
thority park. Here too, visi-
tors find spots for hiking,
canoeing, picnicking, and
day trips along with camp-
ing, caving and exploring the
ruins of the old mill.

Just south and west of
Rockwood on the Guelph
Line is the Electric Railway
Museum. It is open daily
through the summer but only
on weekends and holidays
from September to Novem-
ber. This is one of those
places little boys in particu-
lar enjoy. But big or little, it's
a place for encouraging the
mechanically-minded, espe-
cially if they have an histori-
cal bent.



WILD BEAUTY: Muskoka, or somewhere in northern Ontario? Nope, just a slice of the Rockwood Conservation Area which attract many people to this area. The park is unique in southern Ontario for its glacial potholes and clean water.

While you're in the Acton
area, the *olde Hide House*
makes a worthwhile stopping
place for those in the market
for winter coats, woollens
and boots. And for those eve-
nings when you want to curl
up with a good book, stroll
across to the *Olde Book
House* and pick up some-
thing modern or antiquarian.

Wetherby's, next door to
the Book House, carries a
special line of British prod-
ucts and magazines.

For the crafter, Acton's
Needle Gnome provides an
extensive line of patterns and
supplies for cross stitching as
well as framing services.

Those with an agricul-
tural background will enjoy
what used to be called the
Ontario Agricultural Muse-
um. Situated off Five
Sideroad just west of old
Hwy. 25, the museum is re-
named the *Farm Museum*
and open only for school
tours and special events like
its craft sale in September.

Not too much further west
the *1846 Log House* on Mil-
ton's Third Sideroad near
Twiss Road offers unique
crafts including pottery.

And while you're in the
Milton area, the annual
Steam Era show happens
Labour Day weekend at the
Milton Fairgrounds. This
year's feature is Allis
Chalmers tractors and equip-
ment. Like the Agricultural
Museum, it's been around for
a long time and only grows
in popularity. While it's ru-
ral connection is obvious, it
appeals to all those mechani-
cally-inclined types too — no
matter the age.

The other big event of this
season is the fall fair. In this
area there are plenty to
choose from. Georgetown
runs the second weekend of
September, followed by
Acton the next weekend,
then Milton the next week-
end and Erin on Thanksgiv-
ing weekend.

Acton's 85th annual fair
starts Friday, September 18
and continues until Sunday
evening with a full array of
traditional livestock compe-
titions, English and Western
riding competitions,
homecrafts displays, a mid-
way and so many special dis-
plays and competitions only
a prize book will provide a

full list.

Despite the town's size,
Acton manages to put on one
of the province's best fairs
and draws the crowds accord-
ingly. The fair is held in
Prospect Park, a block west
of Main Street, one block
north of the intersection of
Mill and Main Streets.

Milton too, is a larger fair
with several regional compe-
titions in livestock. The Fair-
grounds is south of the old
downtown core.

One of the last big fairs of
the season is Erin. Once
again, the crowds come from
all around and are certainly
not limited to rural residents.
Their new exhibit hall pro-
vides the board with a good
display area for crafts and
merchants as well as a place
for entertainment. Erin Fair-
grounds is west of Main
Street in the north end of
town. You can't miss them
because crowds tend to jam
traffic on Main Street.

If you wanted to stay over
night in the area, *Stoncroft
Bed and Breakfast* on Tra-
falgar Road just south of old
Highway 24 offers accommo-
dations by reservation.

Illusions

by

Jeanette Dodson
Interior Design

Silk Flowers

Accessories

Gifts

Interior Design

Weddings

Event
Decorating

Gift Baskets

Residential -
Commercial

... open
every weekend,
other times by
appointment or chance

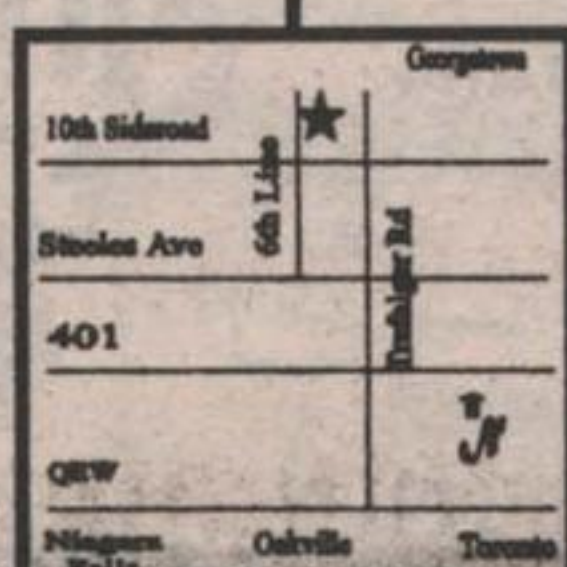
R.R.#3,
10285-6th Line
Georgetown, ON

L7G 4S6

(905) 877-5496

also
featuring
Guest Artists
& Artisans

Studio 2



Georgetown Area Country Roads Artisans Studios 2 & 3

OPEN HOUSE WEEKEND

October 3 & 4
10 a.m. - 6 p.m.



Call for directions & brochure with upcoming shows

PINENEEDLE ENTERPRISES

The 1998 SPECIAL EVENT FIGURINE

"QUEEN OF THE UNIVERSE"

and matching pin
will only be available
for sale during our

BOYDS BEARS & FRIENDS™

SPECIAL EVENT DAY,

Open House and Sale

Also featuring: Teddy Bears, Country
Christmas, Wood Accessories



SUSAN FYFE

R.R. #3, 9889 6th Line,
Georgetown, Ont. L7G 4S6
E-mail: pinendl@idirect.com

(905) 877-6092

Studio 3

POTTERY

Stoneware & porcelain,
blown glass, wood turnings,
wrought iron, lampshades,
jewellery & more,
by over 50 Canadian artists
& craftsmen.



Victorian screen/storm doors and furniture
custom crafted in our woodland setting.

1846 Log House Craft Gallery

2334 Third Sideroad at Twiss Rd. R.R. 2
Campbellville L0P 1B0 Ph/Fax: (905) 854-0311

Open daily 10-6