



The Regional Municipality of Halton



Curb Appeal

Halton Hills

Thanksgiving Holiday Waste Collection Notice

Please Note Collection Day Changes
October 2005

Monday, October 10 moves to Tuesday, October 11

Tuesday, October 11 moves to Wednesday, October 12

Wednesday, October 12 moves to Thursday, October 13

Thursday, October 13 moves to Friday, October 14

Friday, October 14 moves to Saturday, October 15

Due to the Thanksgiving Holiday, waste collection services the week of October 10th will take place the day after your regular collection day. Please check your 2005 Waste Management Calendar for details in your area or the Region's Waste Management website at www.region.halton.on.ca/ppw/waste.



Halton Waste Management Site

**Will be closed on Monday, October 10
due to Thanksgiving Monday**

**Regular Operating Hours
Open Monday to Saturday
8:00 a.m. to 4:30 p.m.**

5400 Regional Road 25, Milton

Please check your 2005 Waste Management Calendar for details in your area or the Region's Waste Management website at www.region.halton.on.ca/ppw/waste

NOTICE OF ROAD ALLOWANCE CLOSURE

Trafalgar Road (Regional Road 3) at Lower Base Line, Town of Milton

The Regional Municipality of Halton is recommending the approval of a by-law for the permanent closure of a road allowance adjacent to Trafalgar Road (Regional Road 3) in the Town of Milton. The property is located on the southwest quadrant of the intersection of Trafalgar Road (Regional Road 3) and Lower Base Line, more specifically referred to as follows:

**Part of Lot 12, Concession 2, north of Dundas Street (Trafalgar)
Described as Part 1 on Plan 20R-16182
Town of Milton, Regional Municipality of Halton
Part of PIN 24930-0098 (LT)**

Regional staff are recommending that the property in question be declared surplus, thereby requiring deletion from the Regional Road system.

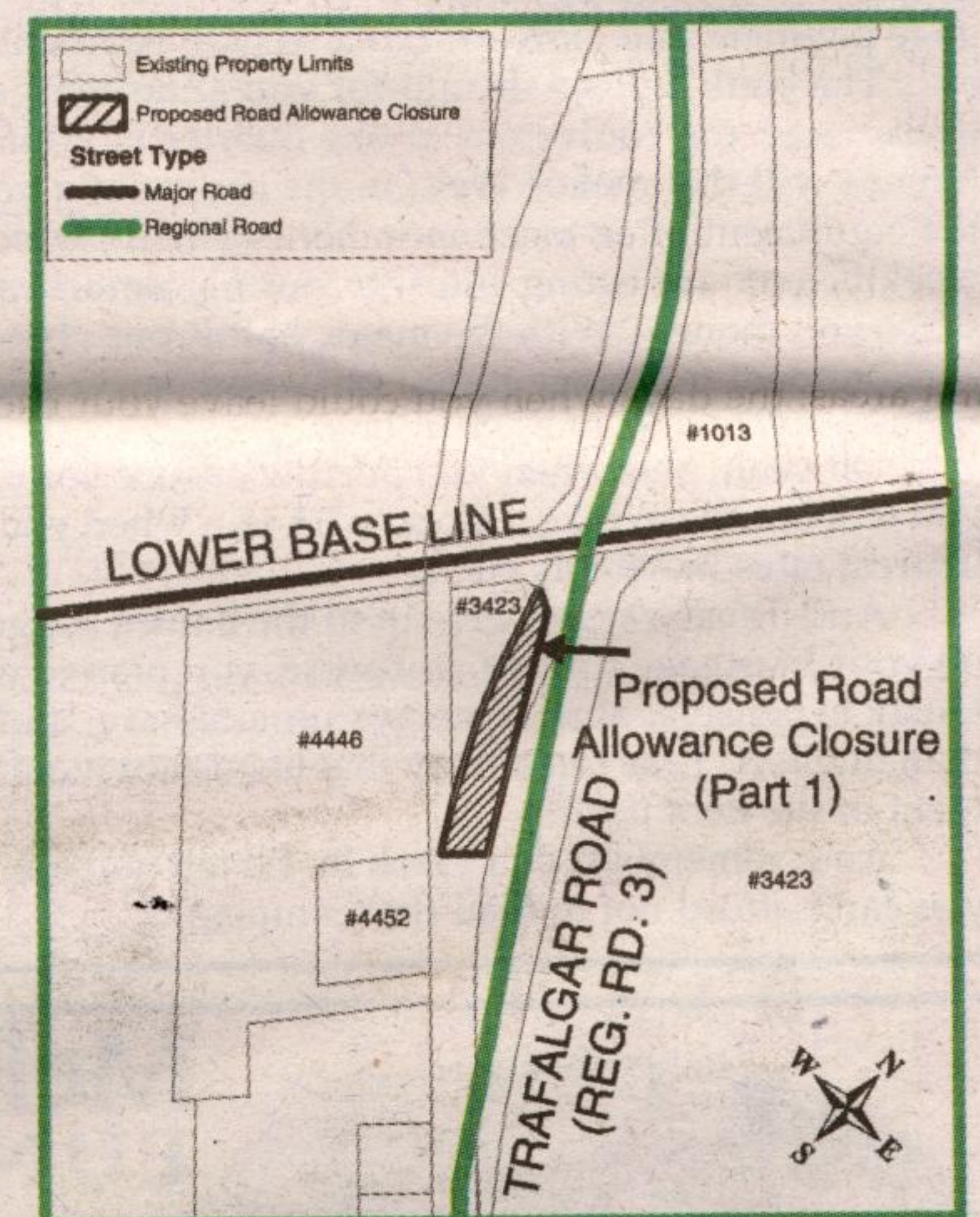
Pursuant to S. 34(1) of the Municipal Act and Halton Region Notice Provisions Policy, public notice must be given for a minimum of 2 consecutive weeks, not less than 14 days prior to the consideration of the By-law. Regional Council proposes at its Administration/Finance Committee meeting on Oct. 19, 2005 (1:30 pm) and Council meeting on Oct. 26, 2005 (9:30 am) to pass a By-law for the permanent closure of this unopened road allowance adjacent to Trafalgar Road (Regional Road 3) in the Town of Milton.

Information requests or questions may be directed to:

Chris Duyvestyn, P. Eng.
Transportation Engineer
Regional Municipality of Halton
1151 Bronte Road
Oakville, Ontario L6M 3L1
Phone: 905-825-6000, Ext. 7623
Toll Free: 1-866-4HALTON
(1-866-442-5866)
Fax: 905-825-8822
Email: duyvestync@region.halton.on.ca

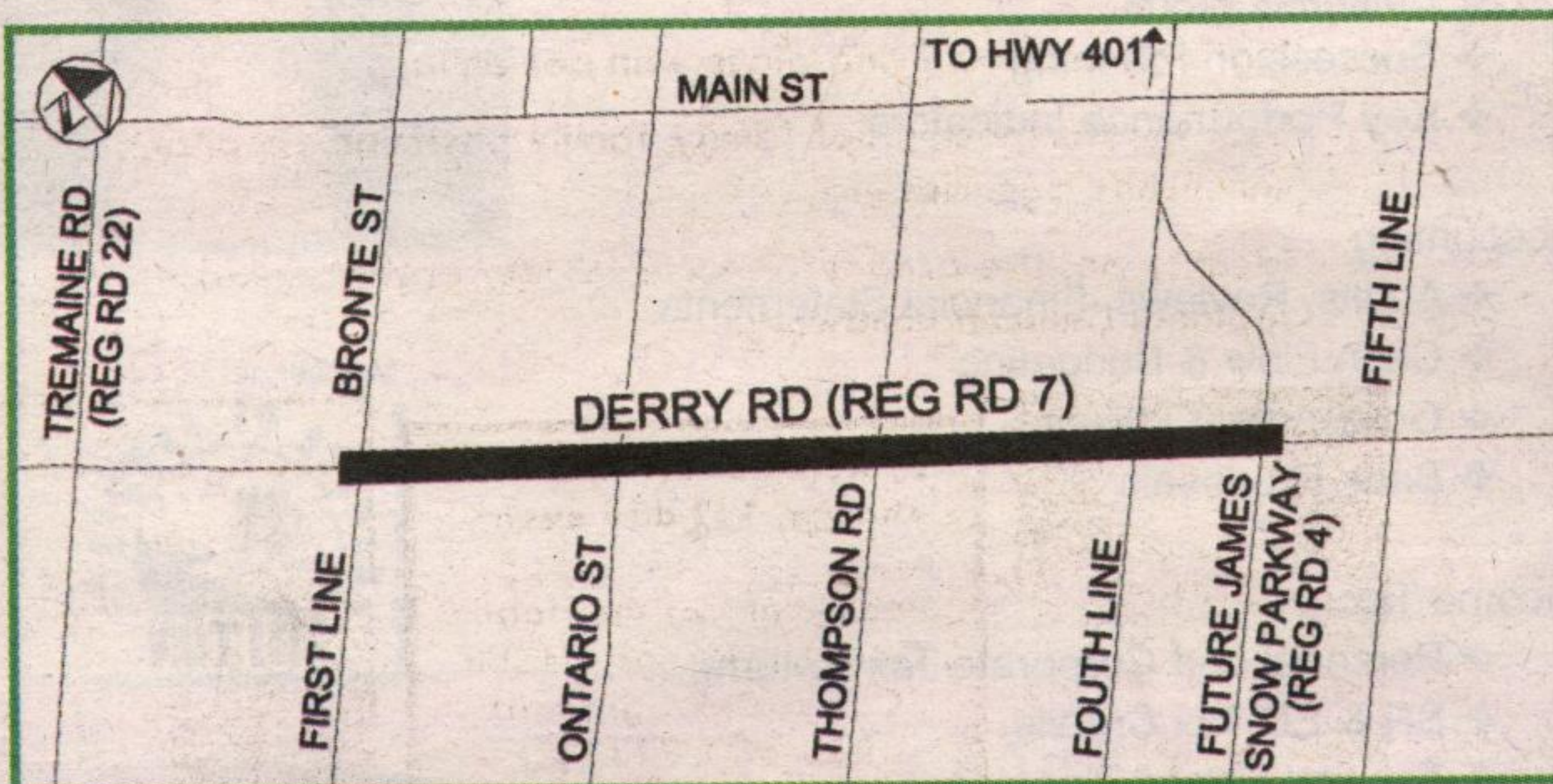
Bob Gray
Assistant Corporate Counsel
Regional Municipality of Halton
1151 Bronte Road
Oakville, Ontario L6M 3L1
Phone: 905-825-6000, Ext. 7248
Toll Free: 1-866-4HALTON
(1-866-442-5866)
Fax: 905-825-8838
Email: grayb@region.halton.on.ca

This Notice first issued on September 30, 2005.



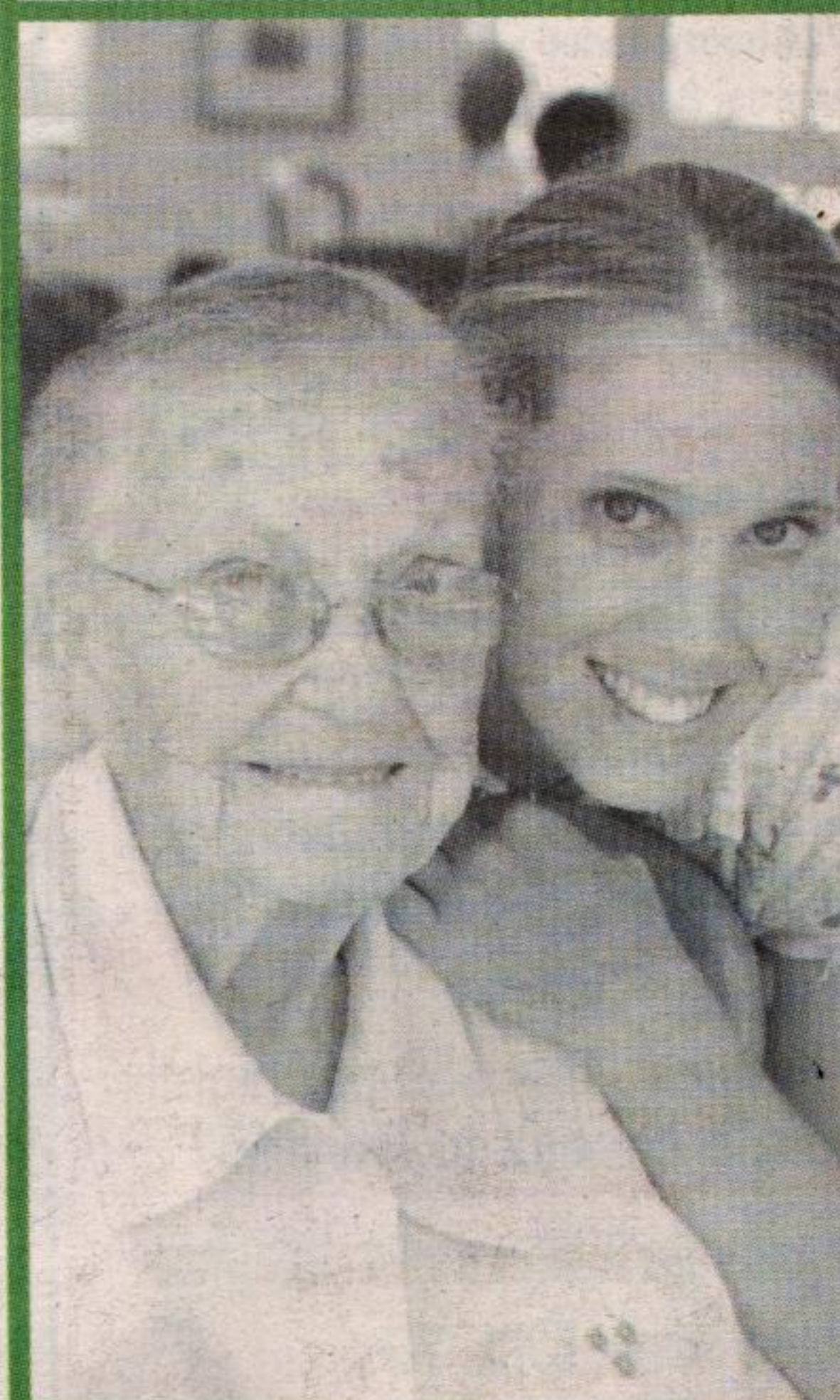
NOTICE OF CONSTRUCTION

ROAD WIDENING ON DERRY ROAD (REGIONAL ROAD 7) FROM BRONTE STREET TO JAMES SNOW PARKWAY (REGIONAL ROAD 4) TOWN OF MILTON



CONTRACT NUMBER:
SCHEDULED START DATE:
SCHEDULED COMPLETION DATE:
CONSTRUCTION SUPERVISOR:

R-20478B-05
OCTOBER, 2005
JUNE, 2007
GORD ROBINS
EXT. 7675



Creek Way Village

Situated in the Orchard Park community, Creek Way Village in Burlington is a non-profit, state of the art long-term care home, owned and operated by Halton Region.

For more information, call
905-825-6000
or visit our website at
www.region.halton.on.ca/creekway

Apply through CCAC Halton:
905-639-5228 or 1-800-810-0000

**Post Inn Village in Oakville and Allendale
Village in Milton accepting new residents.**