

# 'After Hours' at Crawford Lake



Pictured above right at the Milton Chamber of Commerce "After Hours" are left to right, Marc Coulombe, Kathryn Longley, Stephen DeMedicis, Christine Marshall, David Gooding, winners of Chamber Scholarships. Chamber members were treated to a guided tour of the Iroquois village at Crawford Lake and a successful fire starting demonstration.

PHOTOS BY STEPHEN BAKER AND JENNIFER PYRAH



## Belfountain Heritage Days

The scenic hamlet of Belfountain has a unique history within the Town of Caledon - both pastoral and rip-roaring - and on Saturday August 12 and Sunday August 13 one can see, hear and relive some of the highlights of the past 150 years.

The Canadian Vintage Motorcycle Group and the CVMG Museum will host a display on the grounds of the Belfountain Country Store of motorcycles dating back to the 1920s. Members of the group will be on hand to discuss the old technologies that hearken back to the time when Belfountain hosted one of the world's more memorable endurance runs.

In 1928 the British Empire Motorcycle Club, of Toronto, held a 24-hour endurance race in Belfountain, hosted by Trimble's Garage and the Castrol Motor Oil Company. Pits for the racers were set up along both sides of Old Main Street, with the bikes roaring by from 5 pm on a Sunday until 5 pm the following Monday. As one local author has put it, "For a week afterwards all you could smell and taste in Belfountain was Castrol Motor Oil." Annual runs were held in the hamlet until 1932.

Today's motorcycle enthusiasts will certainly appreciate the skill it took then to navigate the gravelled and pitted Main Street course! The CVMG display will be open to the public, and free, from noon until 5 pm on Saturday and Sunday.

Also in attendance Sunday afternoon will be the respected local historian and author

Bernice Trimble, for a rare book signing of her two popular titles, "Belfountain - Caves, Castles and Quarries" and "Remember When."

Trimble skilfully weaves the fabric of our heritage in a very readable way, and the colourful characters of the past punctuate her stories. Anyone who has visited the famous Belfountain Park or walked the Trimble Trail will respect her dedication in translating oral history for all of us to enjoy.

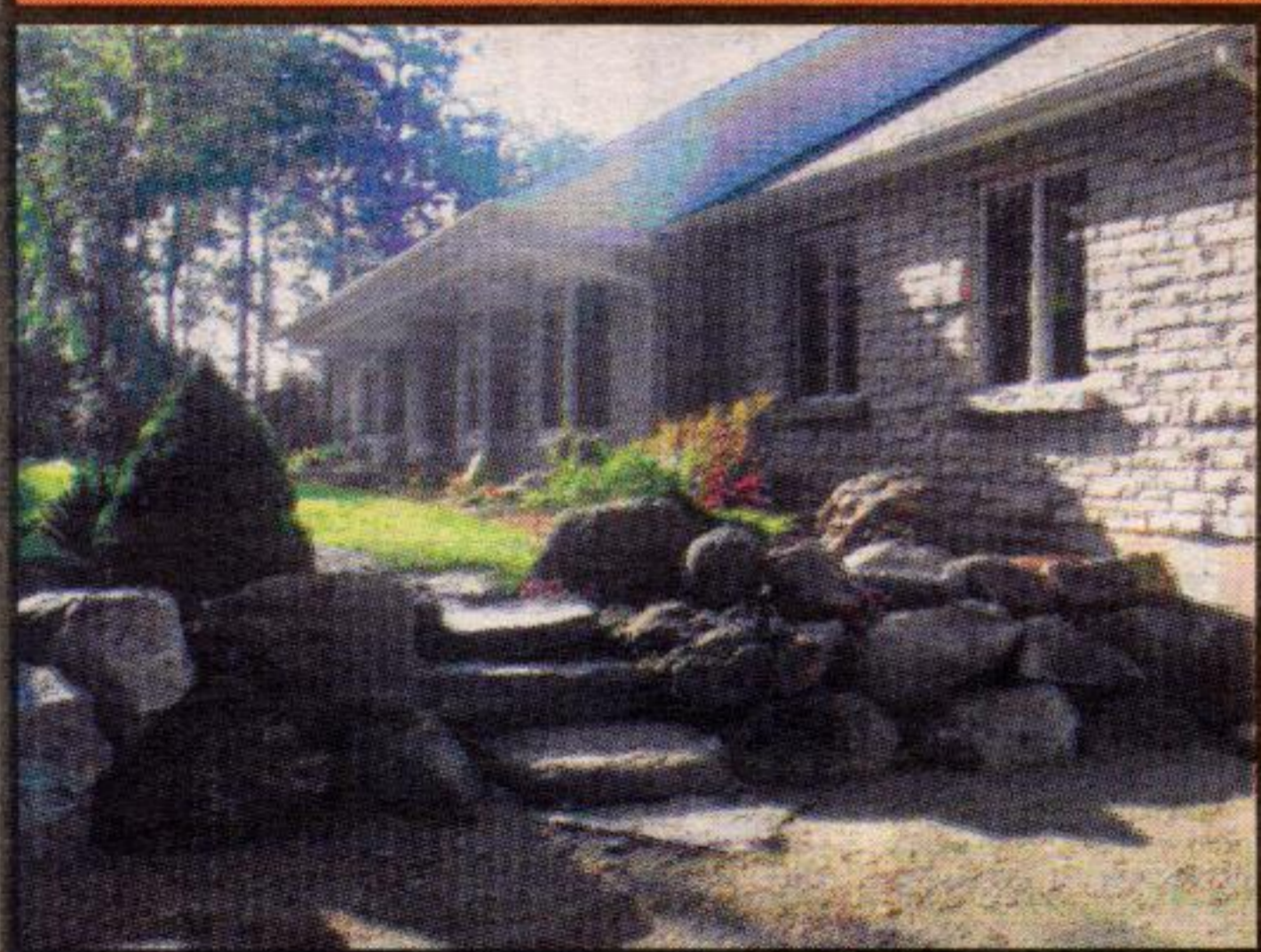
To add another take on Belfountain's past, author Don Norris will be talking about, and signing, his best-seller, "Riding with Attitude," his personal chronicle of local, and memorable, rides over the years. Both authors will be meeting the public at the Belfountain Country Store.

And to bring the written pages of history to life, staff of the Credit River Company will again this year be conducting free heritage walking tours of the hamlet, pointing out the unique architecture and delivering a fascinating narrative of the elements that created this place - the river, the railroad and the rocks. Here the tales of the quarries that created Queen's Park and Casa Loma, and the eccentric millionaire inventor who built his own private fantasyland. Tours leave from the patio of the Belfountain Store daily at 1 pm and 3 pm.

All events are without charge, and are hosted by the Credit River Company, owner of the historic 1888 Belfountain Store, the Cataract Inn (1855), and the Caledon Inn (1850).

For more information: (519) 927-3033.

### 3300 SQ. FT. CUSTOM BUNGALOW



7+ private acres, just east of Guelph, 3 BR, h/w flr throughout, finished in-law suite, C/Air, natural gas, a must to see!  
Asking

**\$799,000.**

See photos at:

[www.photobucket.com](http://www.photobucket.com)

Call 519-767-2378 or 519-766-2829

## Taylor Nursery

### SUMMER SALE CONTINUES!

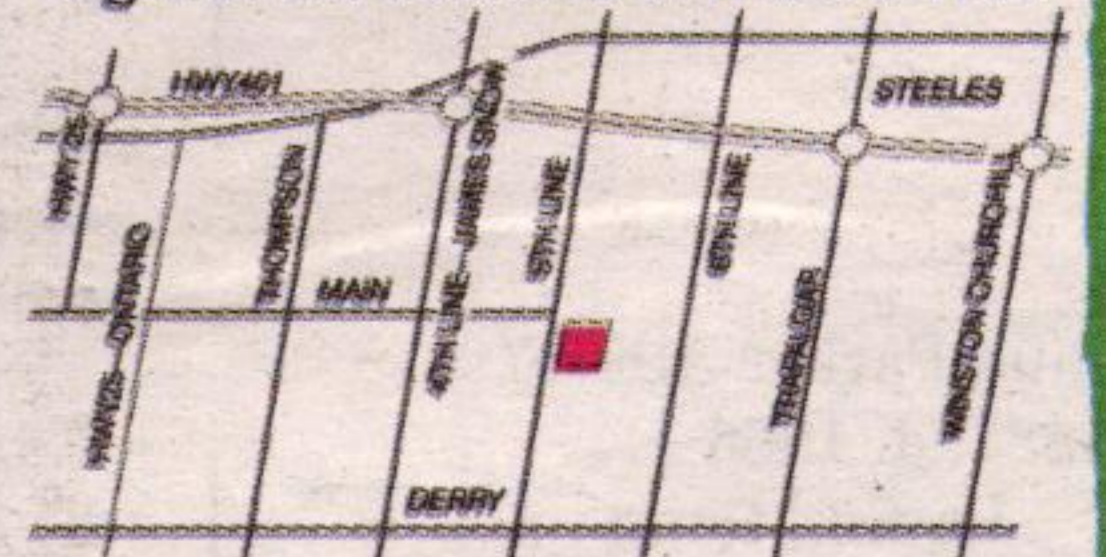
30% off All Plant Materials - including beautiful, blooming baskets & containers; perennials; shrubs & trees

30% off Most Giftware - including statuary, antiques, pottery, ornaments & more

ASK US about new landscape designs or changing existing yards and gardens.

Your Town and Country Gardening Centre 905-876-4100

7429 Fifth Line, Milton  
Right at the east end of Main Street



NEW HOURS:  
Monday to Friday: 9-6  
Saturday: 9-5 Sunday: 10-5