

Visit us on the web at [www.miltonchrysler.com](http://www.miltonchrysler.com)

# SIZZLING HOT SPECIALS AT MILTON CHRYSLER



**LOW KILOMETRES**

**1998 DODGE GR CARAVAN LE**  
3.8L V6, auto, air, p.seat, pw, pdl, tilt, cruise, quad seats, alloys, roof rack, dual air. Stk #538461

**SALE PRICE \$9,888\*\***



**ONLY 46,000km**

**2003 JEEP LIBERTY ROCKY MOUNTAIN**  
Black beauty, 6 cyl, auto, air, pw, pdl, fog lights, roof rack, alloys. Stk #695604

**SALE PRICE \$23,888\*\***

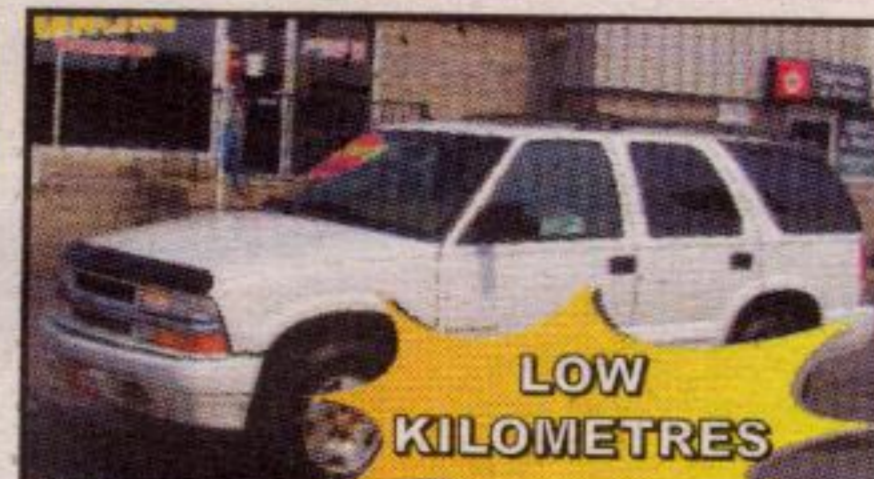
## SPECIALS OF THE WEEK



### 2001 CHRYSLER SEBRING LX

One owner car, low kms, 6 cly, auto, air, leather, moon roof, p. seat, pw, pdl, CD, chrome wheels. Stk #522997

**SALE PRICE \$12,888\*\***



**LOW KILOMETRES**

**2000 CHEVY TRAIL BLAZER 4x4**  
Two tone leather, moon roof, V6, auto, air, p. seat, pw, pdl, tilt, cruise, CD, alloys, roof rack. Stk #215588

**SALE PRICE \$14,888\*\***



**ONLY 55,000km**

**2000 CHRYSLER NEON LX**  
4 cyl, auto, air, power moon roof, alloys, pw, pdl, tilt, cruise, CD changer. Stk #873151

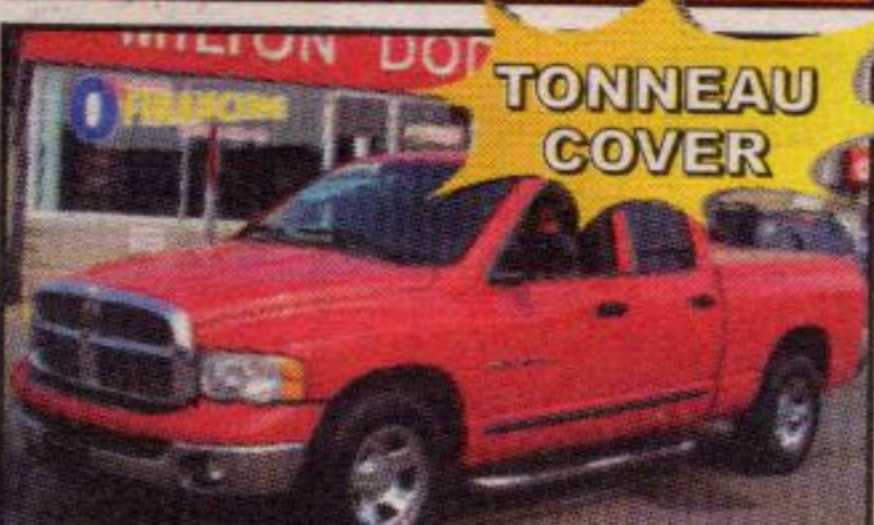
**SALE PRICE \$9,888\*\***



**ONLY 69,000 km**

**2002 CHRYSLER CONCORD LX**  
One owner, all service records, V6, auto, air, leather, roof, chrome wheels, p. group, p. seat, CD. Stk #267046

**SALE PRICE \$15,888\*\***



**TONNEAU COVER**

**2002 DODGE RAM SLT 1500**  
V8, auto, air, p. seat, pw, pdl, CD, chrome wheels, chrome running boards. Stk #107743

**SALE PRICE \$23,888\*\***

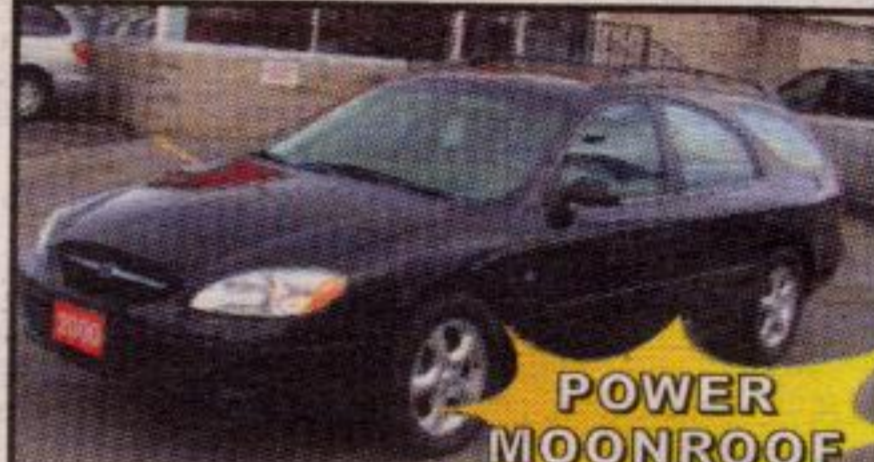


**DVD**

### 2004 DODGE GR CARAVAN

V6, auto, air, P. group, p. seat, alloys, CD, roof rack, P/T warr till Dec 11, 2010. Stk #582620

**SALE PRICE \$19,888\*\***



**POWER MOONROOF**

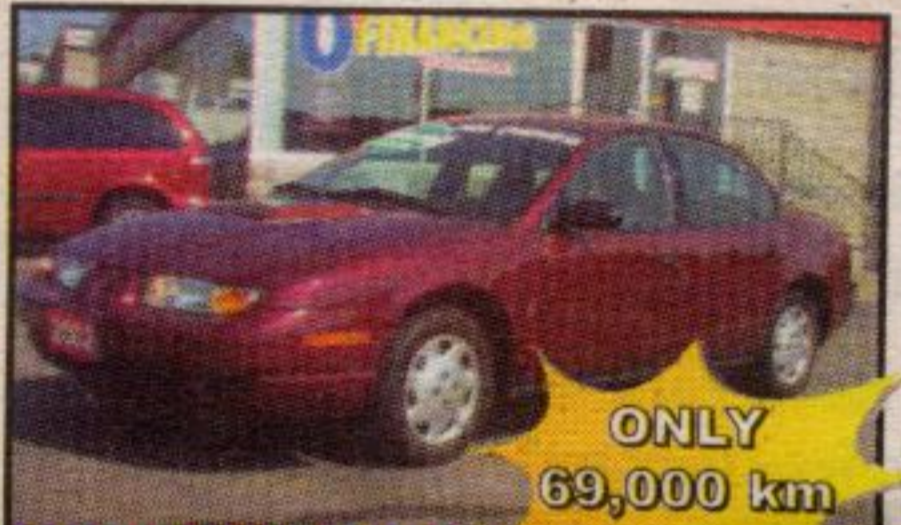
**2000 FORD TAURUS WAGON**  
V6, auto, air, pw, pdl, tilt, cruise, alloys. Stk #130168

**SALE PRICE \$10,888\*\***



**2002 CHRYSLER SEBRING LX**  
6 cyl, auto, air, pw, pdl, tilt, cruise, CD. Stk #128234

**SALE PRICE \$11,888\*\***



**ONLY 69,000 km**

**2002 SATURN SLI**  
4 cyl, 5 speed, air, pw, pdl, tilt, AM/FM/CD. Stk #226374

**SALE PRICE \$9,888\*\***



**PLUS D.O.T.**

**2002 DODGE CARVAN SE**  
6 cyl, auto, air, pw, pdl, CD, roof rack. Stk #704325

**SALE PRICE \$10,888\*\***



**ONLY 65,000 km**

**2002 CHRYSLER INTREPID ES**  
3.5L V6, auto, air, pw, pdl, tilt, cruise, AM/FM/CD, alloys, fog lights, keyless entry. Stk #130103

**SALE PRICE \$12,888\*\***



**2002 PONTIAC SUNFIRE**  
4 cyl, auto, air, PS, PB, ABS, AM/FM/CD, low km. Stk #326475

**SALE PRICE \$8,888\*\***



**2000 DODGE CARAVAN**  
4dr, V6, auto, air, pw, pdl, tilt, cruise, AM/FM/cass. Stk #821985

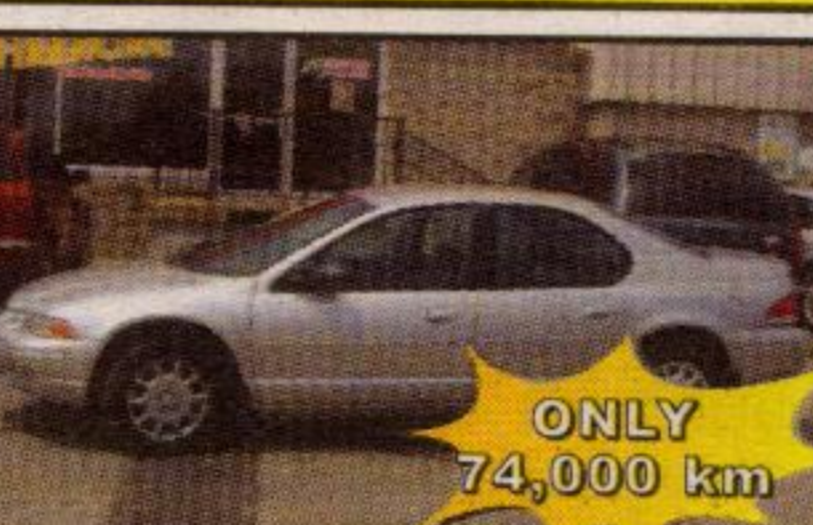
**SALE PRICE \$7,988\*\***



**MINT CONDITION**

**2000 GMC SONOMA SLS 4x4**  
Comes with winch, 4.3L V6, auto, air, pw, pdl, tilt, cruise, CD, alloys. Stk #135980

**SALE PRICE \$17,888\*\***



**ONLY 74,000 km**

**2000 CHRYSLER CIRRUS**  
4 cyl, auto, air, power seat, pw, pdl, tilt, cruise, cass. Stk #276606

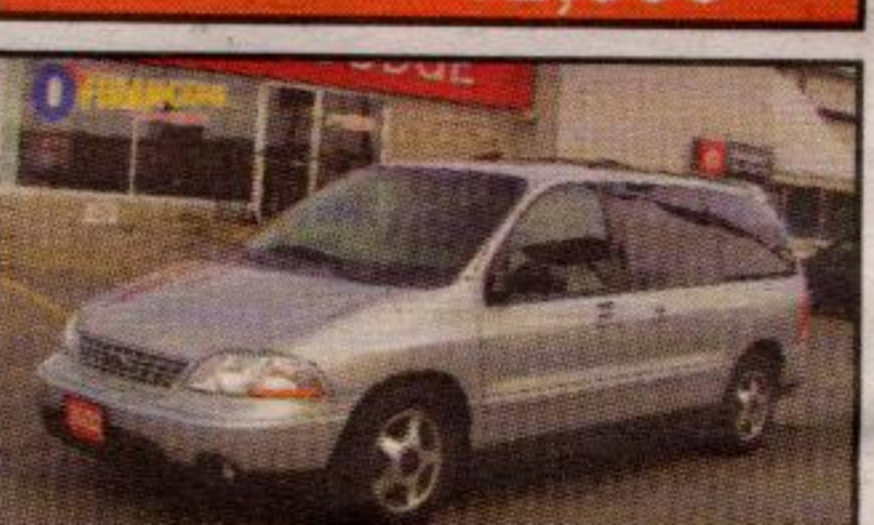
**SALE PRICE \$8,888\*\***



**ONE OWNER**

**2004 DODGE RAM 1500 SLT**  
V8, auto, air, pw, pdl, tilt, cruise, CD, chrome wheels, matching cap. Stk #605514

**SALE PRICE \$24,888\*\***



**2002 FORD WINDSTAR SPORT**  
V6, auto, dual air, pw, pdl, quad seats, alloy wheels, roof rack. Stk #872132

**SALE PRICE \$15,888\*\***



**2001 DODGE DURANGO SLT**  
7 pass, 4.7L V8, auto, p. seat, pw, pdl, tilt, cruise, dual air, two tone paint. Stk #569899

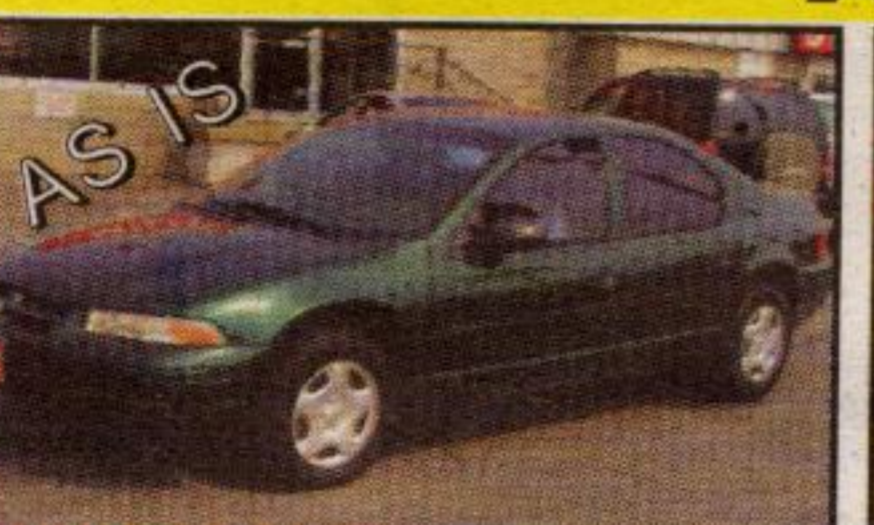
**SALE PRICE \$17,888\*\***

## AS TRADED SPECIALS



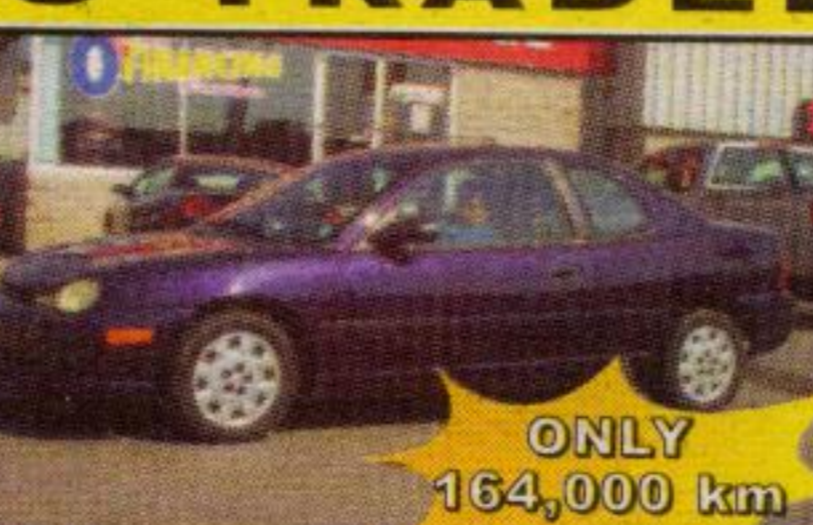
**1997 JEEP CHEROKEE SPORT**  
6 cyl, auto, air, AM/FM cass, fog lights. Stk #607399

**AS TRADED PRICE \$4,888\*\***



**1997 DODGE STRATUS**  
4 cyl, auto, air, pw, pdl, tilt, cruise, cass. Stk #519912

**AS TRADED PRICE \$1,488\*\***



**ONLY 164,000 km**

**1997 DODGE NEON**  
4 cyl, 5 speed, air, AM/FM/Cass. Stk #244260

**AS TRADED PRICE \$1,488\*\***



**ONLY 160,000 km**

**1995 DODGE NEON**  
4 cyl, 5 speed, ps, pb, air, tinted windows. Stk #126291

**AS TRADED PRICE \$988\*\***



**COLD AIR!**

**1998 DODGE CARAVAN**  
7 pass, 6 cyl, auto, air, AM/FM/cass, roof rack. Stk #722884

**AS TRADED PRICE \$1,988\*\***



**1996 PLYMOUTH NEON**  
4 cyl, auto, air, pw, pdl, AM/FM/cass, power mirrors. Stk #528225

**AS TRADED PRICE \$1,888\*\***

**MILTON CHRYSLER #1 In**  
Is Rated...



**FOR CUSTOMER SATISFACTION<sup>®</sup>**  
Experience the Difference

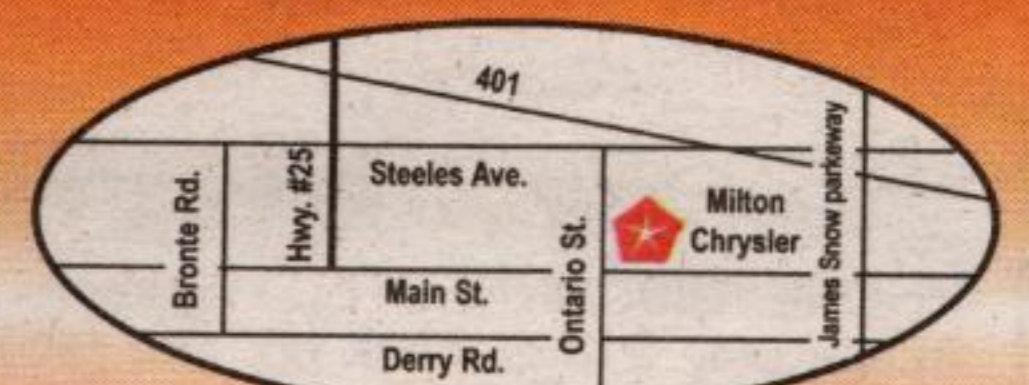
**THERE'S ONLY ONE MILTON CHRYSLER**



**"WE SELL SATISFACTION"**  
905-878-8877 • 1-800-303-3257



**81 ONTARIO ST. N., MILTON**  
Visit us at [www.miltonchrysler.com](http://www.miltonchrysler.com)



**One block north of Zellers**

#Based on 2004 year-end S.S.I. results for our dealer group verified by Daimler Chrysler Canada. \*\*Price plus applicable taxes, admin, & lic. See Dealer for details.