

Visit us on the web at www.miltonchrysler.com

VERY LIMITED PRODUCTION 2006 DODGE CHARGER RT DAYTONA JUST ARRIVED!

GO MANGO!
DAYTONA
649-200



From July 6, 2005 to August 2, 2005

YOU PAY WHAT WE PAY!

BRAND NEW 2005 DODGE SX 2.0

Auto transmission, air conditioning, AM/FM/CD stereo, fog lamps, 5 yr/100,000 km powertrain warranty w/24 hr emergency roadside assistance. 24D pkg

Not exactly as shown



MY RIDE
STUDENT PROGRAM
CHRYSLER Jeep

CASH SALE PRICE

\$12,288*

OR 60 MONTHS GOLD KEY LEASE NO DOWN PAYMENT

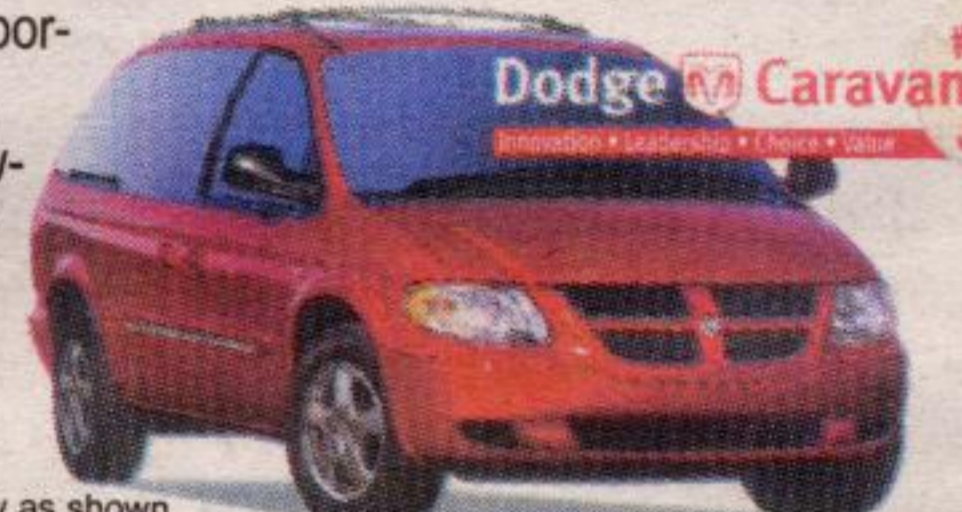
\$199^{††}
per month

Ask about our
48 Hour Test Drive Program

BRAND NEW 2005 DODGE CARAVAN

FAMILY VALUE PACKAGE - auto transmission, air conditioning, AM/FM/CD stereo, 7 passenger seating, sunscreen glass, floor-mats, power windows/door-locks, heated mirror, tilt, cruise, 5 yr/100,000 powertrain warranty w/24 hr emergency roadside assistance. 28C pkg.

Not exactly as shown



CASH SALE PRICE

\$19,288*

OR 48 MONTHS GOLD KEY LEASE NO DOWN PAYMENT

\$298^{††}
per month

Why? BECAUSE EVERYONE CAN BUY OR LEASE A BRAND NEW 2005 CHRYSLER, DODGE OR JEEP AT THE **CHRYSLER EMPLOYEE DISCOUNT PRICE**

plus **0%** OR

up to **\$5,500** in additional Dealer Discounts[†]

CHRYSLER PURCHASE FINANCE & LEASE RATES WILL ALSO APPLY TO MOST 2005 MODELS IN STOCK



Hurry in and take advantage of this
HISTORY MAKING EVENT!



MILTON CHRYSLER **#1** In
Is Rated...



FOR CUSTOMER SATISFACTION[†]
Experience the Difference



FINANCING PROVIDED BY... Chrysler Financial... VISIT US FOR MORE DETAILS

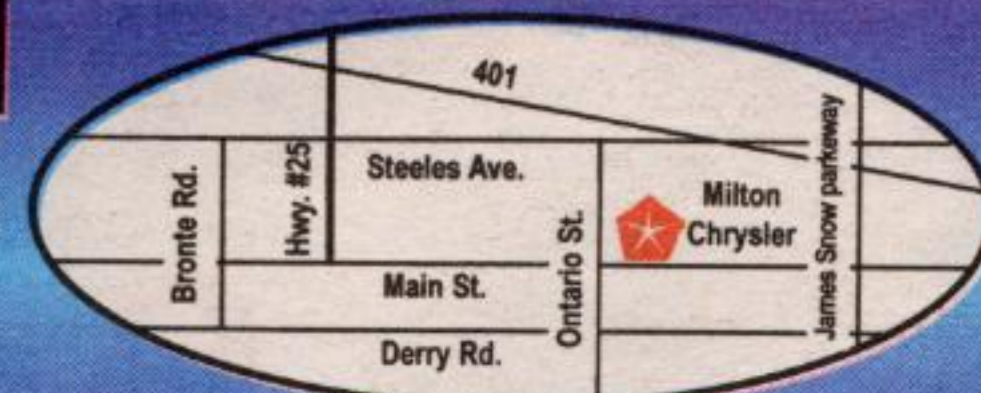
Milton
CHRYSLER • DODGE • JEEP
"WE SELL SATISFACTION"

THERE'S ONLY ONE MILTON CHRYSLER

905-878-8877 • 1-800-303-3257

81 ONTARIO ST. N., MILTON

Visit us at www.miltonchrysler.com



One block north of Zellers

#Based on 2004 year-end SSI results for our dealer group, verified by Daimler Chrysler Canada. *Cash Sale Price includes FDA (factory to dealer allowance), add for applicable freight, admin fee, taxes & licence fee, SX 2.0 includes My RIDE Student rebate. Special finance/leased rates are available in lieu of FDA. See dealer for details. ††Lease payment terms as shown. Due at signing applicable down payment, first payment, applicable freight, admin fee, taxes & licence fee. 20,400 km annual mileage allowance. Excess km charge 15¢ per km. Closed end, walkaway lease, OAC. †Special finance/lease rates/factory dealer allowance mutually exclusive and may not be combined. See dealer for details. *See dealer for details.