

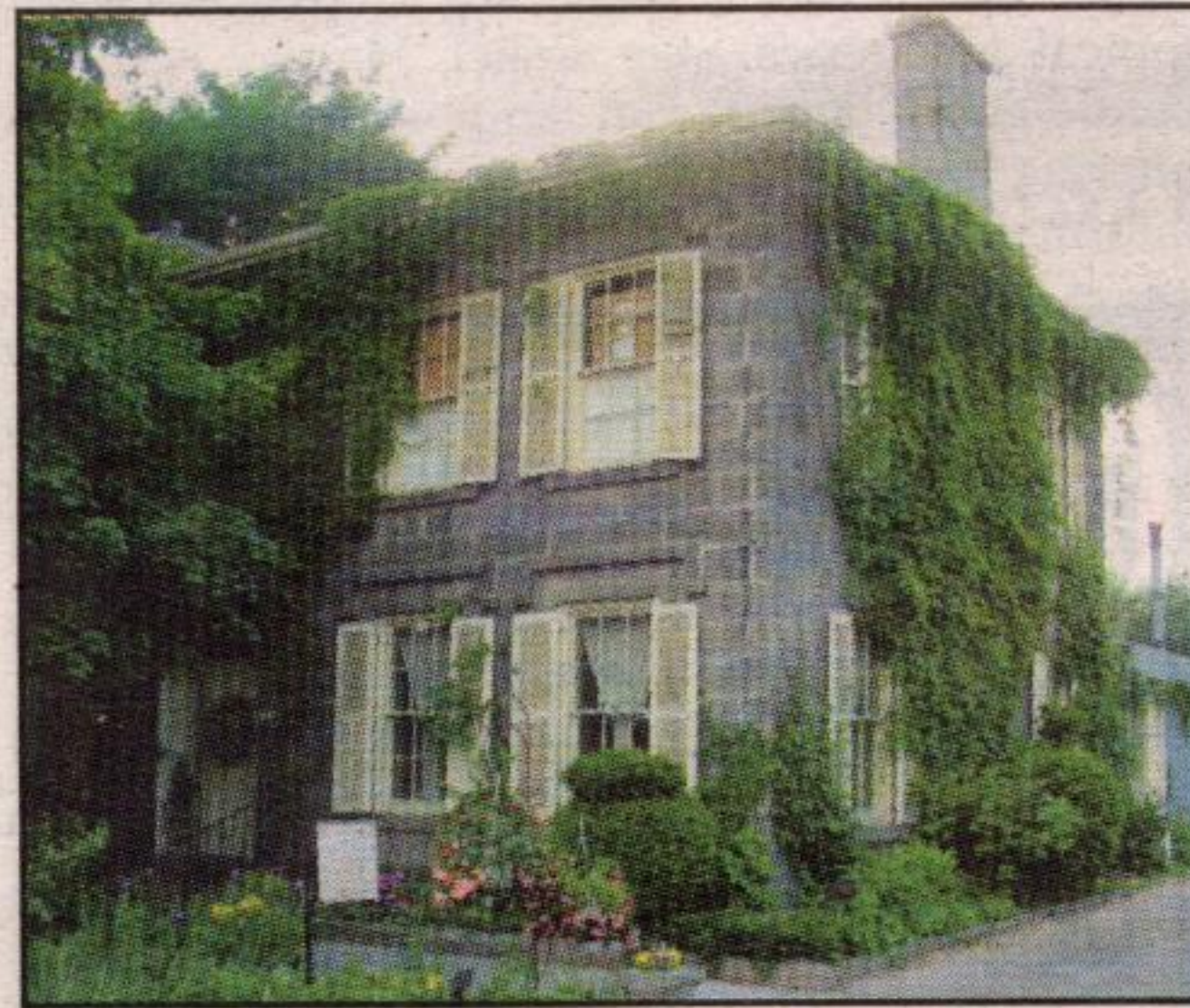
# Charity Table at Harrop's

BY CATHY MCLEOD

It was my decision where to have my birthday dinner this year and I made the very wise choice of Harrop's Restaurant in Milton. Of course I called and asked for their best table! I was informed that they have a "Charity Table" which turns out to be the round centre table in front of the fireplace in

either the Green Room or the Carter room. The idea is that if you would like to sit at either for lunch or dinner you pay a minimum of \$20 (cash or debit) upfront and receive a tax receipt. The money will go to the charity of your choice from the following three: The Milton Hospital Foundation, The United Way or Halton Women's Place. During the first year of initiation Harrop's has raised \$2500 and hope to double that amount this year.

Along with being spoiled rotten by the Compass staff, my boss made the donation for the table on behalf of The Halton Compass. Thanks everyone, it was a delicious birthday!



Harrop Restaurant

## PEEK INTO THE PAST

The Milton Historical Society is proud to present a series of programs for children this upcoming summer which will run Tuesdays (6-8 yrs. old) & Wednesdays (9-11 yrs. old) from 9am. - 3 pm.

### Horsing Around July 5 & 6

- Learn all about horses, the farrier, and how important they both were to pioneers
- Make a horseshoe picture frame and your very own horse, and enjoying participating and doing other crafts and activities.

### Hands-on with the Trades July 12 & 13

- Learn about the different trades that were essential to the pioneers
- See the products of the tradesmen
- Make a barrel pencil holder, a thaumatrope and participate in other crafts & activities



Waldie's Blacksmith Shop  
16 James St., Milton  
905-875-4156



**GREAT LAKES  
LANDSCAPE  
CONTRACTORS INC.**  
OUTSTANDING QUALITY SINCE 1978

(519) 853-4994

- flagstone & interlocking brick
- decks of distinction
- landscape design & consultation
- rural estate management
- small woodlot management
- lawn & garden sprinkler systems
- pruning & hedge trimming
- tree & shrub planting
- ponds & waterfalls
- spring clean-up
- outdoor lighting



## G. D. H. S. 1985 to 1995 School Reunion

Everyone who attended the classes of 1985 to 1995 & guests are invited to attend.

**SATURDAY AUGUST 6TH, 2005**

**Delta Meadowvale Resort & Conference Centre  
6750 Mississauga Road, Mississauga**

**Tickets \$85.00 per person**

*(tickets will not be sold at the door)*

To order tickets via phone please call I do at

**905-693-0542**

Please make payable to

School Reunion C/O: I Do, 500 Steeles Ave, East, Milton, ON, L9T 3P7  
Payments by Visa & Mastercard Accepted

# Halton Agricultural Society

INSTITUTED 1853 - MILTON FAIR

Entry Forms are now available for the Milton Fall Fair's Demolition Derby. Hosted at the Milton Fairgrounds, the dates and times are:

Friday, September 23, 2005, 8:00 p.m. - 4 cylinder cars  
**Special Feature Rollover Competition to follow**

Saturday, September 24, 2005, 8:00 p.m. - 8 cylinder cars

Sunday, September 25, 2005, 8:00 p.m. - 8 cylinder cars

Entry Forms and information are available at:

**Charlie Speck Welding, Milton @ 905-878-1663**  
**Milton Fair Grounds, Milton @ 905-878-5689**

# Sing, sing a song...

STORY AND PHOTO BY DONNA DANIELLI

Ask vocal teacher Kirsten Pitkanen to describe this weekend's recital showcasing the talents of her students, and she'll immediately point to the name of the event on the tickets: "What A Show!" "This is not your run of the mill show," explains an enthusiastic Kirsten. "This is a sampling of so many musical styles. It really showcases the versatility of the musicians. There's a lot of talent, both in my studio and in the community in general." "What A Show!" marks the end of the Canadian Academy of Vocal Arts (CAVA) 2004-2005 year and will feature over 20 talented soloists performing songs from a variety of genres, including Broadway, classical, rock, jazz, Celtic and more. One of the highlights of the evening's entertainment will be a "Songwriter's Showcase", where local artists, such as Steven Demetrius, Janine Farragher, Kim Brown and Sue McPhail will perform their own original songs.

"Music is a gift that lasts a lifetime," says Kirsten, who moved her studio to Milton last year. "Who you are comes out in your voice, it's a window to your soul."

Kirsten herself is no stranger to the stage. The multi-talented singer / songwriter has been performing onstage since the age of eight and holds a degree in Vocal Performance (Opera) from McGill University. She is quick to point out though, that she performs professionally in a wide range of styles, from operatic to pop to rock. And she encourages her students to do likewise. "I push my students out of their comfort zones, but in a safe way" she explains. "You need to be out of your comfort zone to grow. And it's not only about technical perfection. It's also about putting on a show and getting a reaction from your audience."

A mandate for Kirsten's students is that ability to be at ease on stage. While her well equipped studio contains such items as a professional microphone, video and tape recorders, musical instruments and more, it is the full length

mirror that can often seem daunting to a new singer. "They have to always keep an eye on their body, how they stand and how they present themselves," explains Kirsten. "The mirror represents the audience for them."

A professional vocal teacher for more than a decade, Kirsten also understands the importance as well of being comfortable with performing. "It's about being real, and being okay with who you are. I want students to leave their music lesson feeling better than when they came. I've tried to create an atmosphere that allows students to relax. Relaxation and focussing your body and mind are key to really developing."

"What A Show!" will take place at the Milton Bible Church on Sunday, June 26 at 7:00 pm. Tickets are available for a cost of \$5.00 in advance and \$7 at the door. For more information about the show or The Canadian Academy of Vocal Arts, please contact Kirsten Pitkanen at 905-878-7922 or at [www.academyofvocalarts.com](http://www.academyofvocalarts.com).



Canadian Academy of Vocal Arts Director and Professional Voice Teacher Kirsten Pitkanen in her Milton studio.

# Open House at Limehouse Kiln

Celebration of completed restoration of Powder House

BY ANN KORNUA

Take the Bruce trail down to one of Limehouse's historical gems this June 25th at 10am for the open house celebration of the restored Powder House. For over six years the Limehouse Kiln Society has been hard at work restoring and promoting the historical importance of the Lime Kilns located in and around the village of Limehouse. The ambition of this group of citizens and municipal officials (along with government and provincial agencies) is to preserve the character of Ontario's and Canada's settlement and industrial history.

Limehouse Kiln Society chair Mary Shier says that she is just one of the figureheads behind the restoration projects. "We owe much thanks and appreciation to people in the community who have made this possible," Mary said. "We are in a tri-party management agreement between the town of Halton Hills and the Credit Valley Conservation and we worked together to make this happen. We have had many donors of money and of kind as well through the years." The Kiln Society's annual general meeting will take place following celebrations at the Limehouse Memorial

Hall. It will be an opportunity for the public to come and appreciate the restoration work accomplished by stonemason Gerry Inglis and his crew. "We felt that we had to do something to preserve these wonderful historical kilns from further erosion," Mary said. "We are hoping to move forward with the Drop Kiln or one of the Pot Kilns in the near future."

The early settlers in the area used the Limehouse Kilns in the 1860 and 1870. The natural cement known as gypsum, mined from beds of limewater shale, was used for the manufacturing of some of the oldest standing buildings in Southern Ontario today. The Limehouse Kilns are an important piece of Southern Ontario's industrial past. "Lime kilns are important to the construction of early Ontario buildings and there are not many of them left; they seem to just disappear," Mary Shier commented.

To learn more about the Limehouse Kilns and to take part in the ceremonies, please meet at the Limehouse Memorial Hall located on 12389 Fifth Line, Halton Hills at 10 am or visit the Limehouse Kiln Society's website at <http://www.limehousekilns.ca>