

The Regional Municipality of Halton

A Partnership That Works!



A Housing Strategy for Halton

Halton residents should be able to remain in their own community.

If you agree with this statement, then you should attend an open house on housing in the Region of Halton.

Halton is developing a comprehensive housing strategy that incorporates a continuum of housing types for all incomes and all stages of life (from emergency shelter and government assisted housing to private sector affordable housing).

At the open house, you will learn about the:

- current housing situation in Halton
- range of housing types across the Region
- continuum of housing for all incomes and stages of life

**When: Tuesday, June 14, 2005
6:30 - 9:00 p.m.**

**Where: Halton Regional Centre
Auditorium
1151 Bronte Rd., Oakville**

On-site childcare and interpretation services will be available for participants but pre-registration is required. If you wish to book childcare space, an interpreter (ASL or other languages), or require more information, please call 905-825-6000 ext. 7488.

NOTICE OF PUBLIC INFORMATION CENTRE #1

Regional Road 25 Transportation Corridor Highway 401 to north of Campbellville Road Town of Milton

Class Environmental Assessment Study

The Regional Municipality of Halton is carrying out a Class Environmental Assessment to consider a wide range of options for transportation corridor improvements to satisfy future travel demands on Regional Road 25, from Highway 401 to just north of Campbellville Road, in the Town of Milton (see map below). The need to satisfy north-south capacity requirements in this transportation corridor has been identified in previous studies including the Region of Halton Transportation Master Plan (2004). This study is being conducted in compliance with Schedule C of the Municipal Class Environmental Assessment (June 2000), which is approved under the Ontario Environmental Assessment Act.

A key component of the study will be consultation with interested stakeholders (public and regulatory agencies) at two Public Information Centres (PICs). The first PIC has been arranged for:

Date: Wednesday, June 15, 2005
Time: 6:30 p.m. - 7:00 p.m. Drop-in centre
7:00 p.m. - 8:00 p.m. Presentation followed by question and answer session
Place: Milton Sports Centre, Banquet Room
605 Santa Maria Boulevard, Milton

The purpose of the PIC is to review and obtain public input after reviewing the problem being addressed, background information, and the alternatives being considered. Anyone with an interest in the study is invited to attend and participate. If you cannot attend and would like to provide comments, please forward them by **Wednesday, June 29, 2005** to the Regional Municipality of Halton at the address below. Following the PIC, the study findings will be reviewed in light of comments received and the preferred alternative will be determined. A second PIC will be scheduled for September 2005.

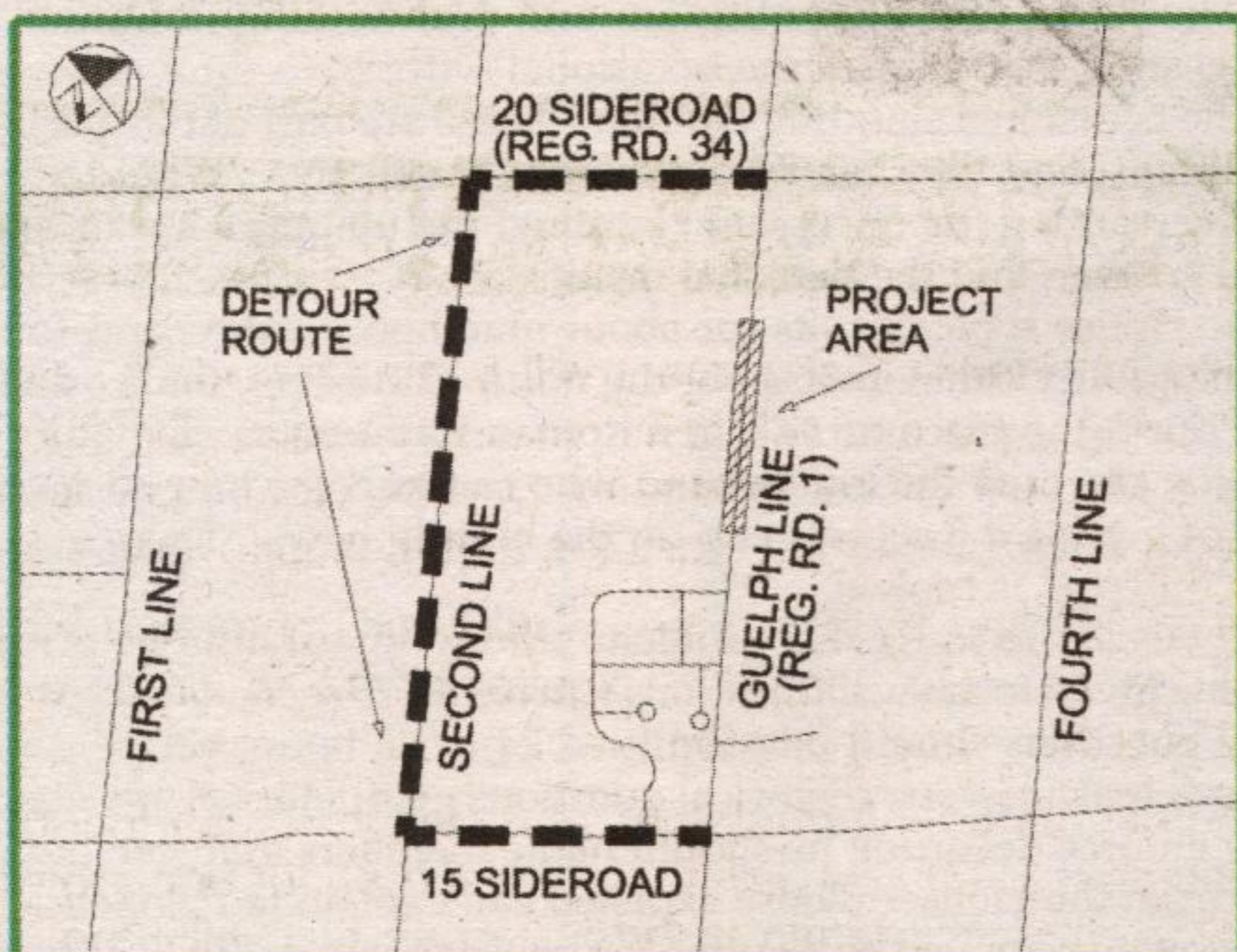
Information requests or questions may be directed to:

Lisa Zinkewich, B.E.S
 Project Manager
 Regional Municipality of Halton
 1151 Bronte Road
 Oakville, Ontario L6M 3L1
 Phone: 905-825-6000, ext. 7556
 Fax: 905-825-8822
 Email: zinkewichl@region.halton.on.ca

Scott Thorburn, P.Eng
 Consultant Project Manager
 URS Canada Inc.
 75 Commerce Valley Drive East,
 Markham, Ontario, L3T 7N9
 Phone: 905-882-4401 ext. 534
 Fax: 905-882-4399
 Email: scott_thorburn@urscorp.com

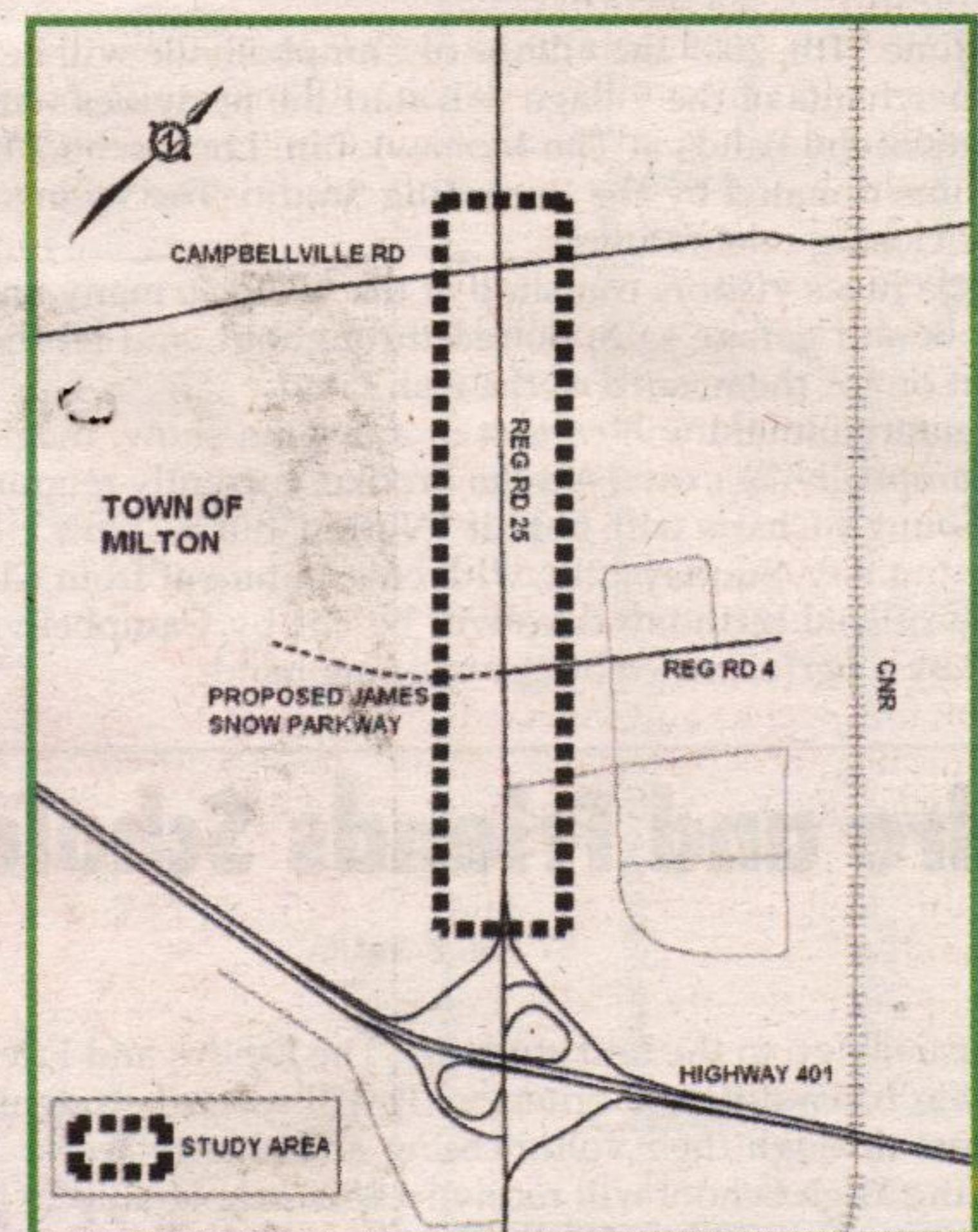
NOTICE OF CONSTRUCTION AND ROAD CLOSURE

ROAD RECONSTRUCTION ON GUELPH LINE (REGIONAL ROAD 1) BETWEEN 15 SIDEROAD AND 20 SIDEROAD TOWN OF MILTON



CONTRACT NUMBER: R-2078B-05
 SCHEDULED START DATE: JUNE 6, 2005
 SCHEDULED COMPLETION DATE: AUGUST 31, 2005
 CONSTRUCTION SUPERVISOR: LEONARD VERWEY, EXT. 7616

The map below shows the approximate limits of the study area.



This Notice first issued on June 3, 2005
www.region.halton.on.ca/ppw/planningroads