

Dorland Haight Gallery to showcase Tom Dietrich's art

BY ANN KORNUA

The Dorland Haight Gallery of Milton will feature Campbellville artist Tom Dietrich in a one-man show from February 26 to March 15th. The sculptor and painter describes this gallery show as a personal response to his connection with nature. It features a collective assortment of organic pieces and abstract oils on canvas. These pieces are heavily influenced by the stunning colours, shadows, and spirit of the nature in southern Ontario. The work will be on display at the Dorland Haight Gallery at 144 Main Street, Milton.

A chance visit while Tom was setting up his artwork in the gallery gave a fascinating insight into Tom's new work. "The larger ones become a process after a while. I find that going to smaller pieces is almost like using different muscles; a different thought process comes out. The smaller ones tend to have a different sensibility because of that; the works become a little more energetic, while the large pieces are like symphonies," Tom said.

Looking into Tom's pieces is almost like staring into a colourful stained glassed window. Each one of his paintings is an intuitive response to the environment around him. "I do not try to paint the thesis; I try to respond to it," Tom explained. "In the larger pieces, I have taken away the notion of horizon and you are thrust right in the painting. In a sense you are forced to confront it and re-evaluate your connection with it."

Gallery owner and art connoisseur Peter Haight is excited about the new show. "Art is about to come into its own around the world and people will want pieces that are one of a kind; that get in touch with an energy that you can only get with an original piece. One can identify that in Tom's work. He defines art as a spiritual message and it's something that everyone can identify with."

Installation is taking place at the end of the month. For more information on Tom's show at the Dorland Haight Gallery, you can contact the gallery at 905-875-1751. Get a peek of Tom's work online at www.tomdietrich.ca



PHOTO BY ANN KORNUA
Getting set up for the show at the Dorland Haight Gallery on Main Street is Peter Haight (left) and renowned Halton artist Tom Dietrich (right).

PHOTO BY ANN KORNUA
Thanks to Meritor Suspension Systems Company and CAW Local 1067, the United Way of Milton has met and surpassed this year's campaign goal of \$425,000, with a grand total of \$440,000. Meritor and CAW Local 1067 helped raise a total of \$36,768 this year. Employees of Meritor Suspension Systems here donate that check to the United Way. Front row from right: HR Manager Katherine Calder, Plant Admin ECC Sue Cornforth, Finance Jean Connor, and HR Specialist Hilary Lloyd. Back row from Right: Sight Man Nick Pearson, Union President Gord Adams, CAW Member Murray Vaudenheuvell and CAW Chair Person Brad Gillis.



LOOK HALTON'S FINEST USED CAR CENTRE

UNDER \$10,000 PRE-MARCH BREAK SALE

WOW
CERTIFIED &
E-TESTED CARS
& TRUCKS FROM
\$2,888

CHRYSLER CERTIFIED PRE-OWNED VEHICLES

Includes
Chrysler Manufacturers' Warranty • 24 hr Emergency Roadside Assistance
101 Point Mechanical Inspection • Reconditioned by Chrysler Technicians
3 days/500 km exchange policy

2002 DODGE CARAVAN SE
4 Dr, 3.3L, 6 cyl, auto, air, CD Stk #75382



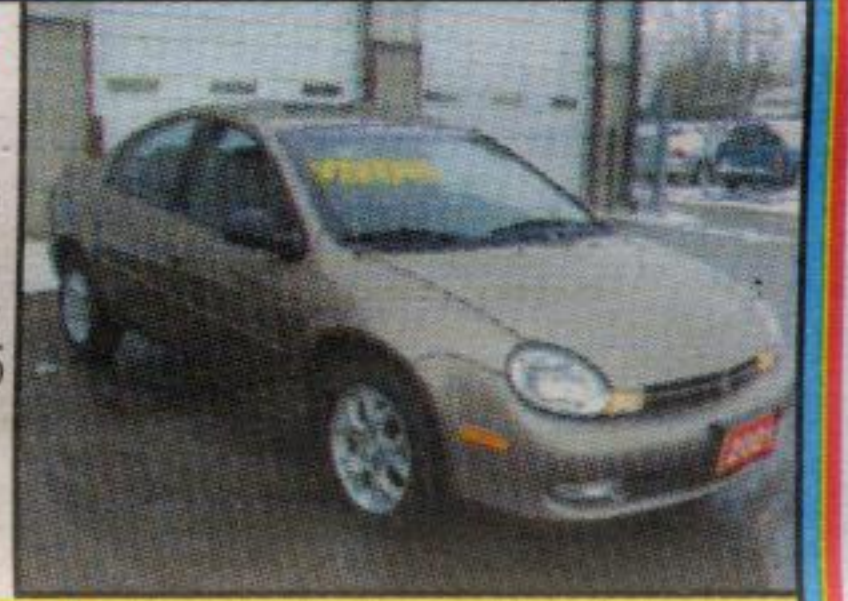
LOOK \$9,988**

2001 CHRYSLER SEBRING LX
6 cyl, auto, air, pw, pdl, tilt, cruise, AM/FM cass, Stk #724264



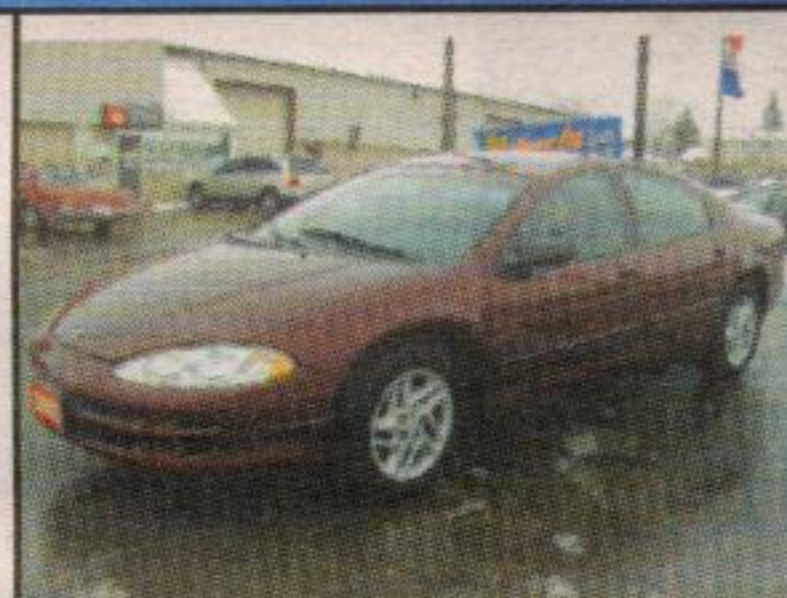
LOOK \$9,888**

2001 CHRYSLER NEON LX
4 cyl, auto, air, pw, pdl, p. mirrors, p. moon roof, alloys, CD changer & cass. Stk #162575



LOOK \$9,888**

2000 CHRYSLER INTREPID
6 cyl, auto, air, pw, pdl, AM/FM/cass, p. mirrors, tilt, cruise, air bags. Stk #244107



LOOK \$9,888**

2000 CHRYSLER NEON LE
4 cyl, auto, air, alloy wheels, cass & CD, Stk #741699



LOOK \$8,888**

2000 CHRYSLER CIRRUS LX
Economical, 4 cyl, auto, air, pw, pdl, tilt, cruise, AM/FM/cass. Stk #130153



LOOK \$8,888**

2001 CHRYSLER NEON LE
4 cyl, auto, air, alloy wheels, tilt, rear spoiler, buckets, cass & CD. Stk #244107



LOOK \$9,888**

1994 DODGE CARAVAN
6 cyl, auto, air, PS, PB, 7 pass, AM/FM/cass, certified and e-tested. Stk #693919



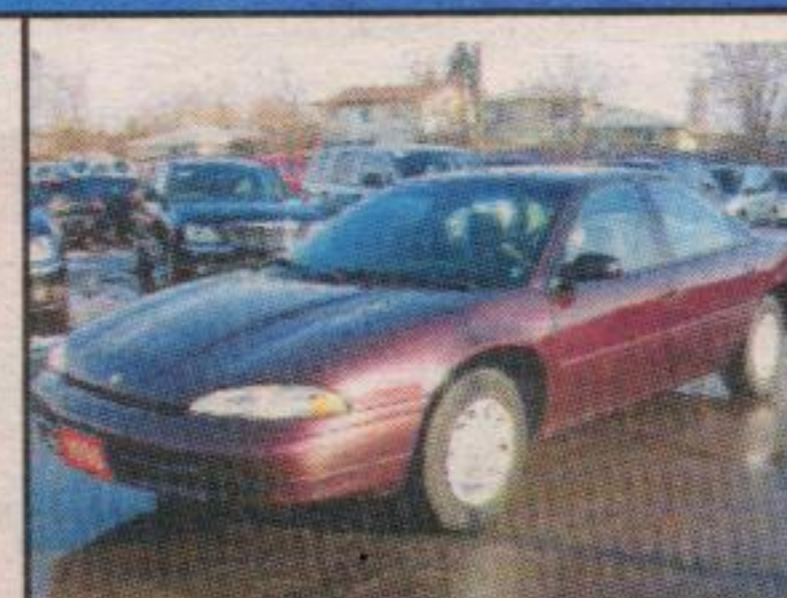
LOOK \$2,888**

1996 PLYMOUTH GL VOYAGER LE
6 cyl, auto, air, pw, pdl, p. mirrors, p. seat, tilt, cruise, alloys, deep tint, roof rack. Stk #229190



LOOK \$4,888**

1995 CHRYSLER INTREPID
6 cyl, auto, air, pw, pdl, AM/FM/cass Stk #664429



LOOK \$2,888**

2000 CHRYSLER INTREPID
6 cyl, auto, air, pw, pdl, AM/FM/cass, only 84,000 km. Stk #773211



LOOK \$9,888**

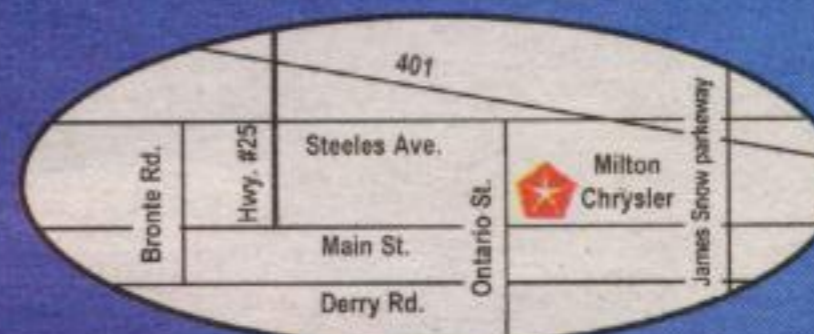
2001 DODGE CARAVAN SE
V6, 3.3L, auto, pw, pdl, tilt, CD, roof rack, 7 pass, deep tint. Stk #447412



LOOK \$9,888**



905-878-8877
81 ONTARIO ST. N., MILTON



One block north of Zellers

Visit us at www.miltonchrysler.com

#1 CHRYSLER DEALER IN CANADA FOR CUSTOMER SATISFACTION*



THERE'S ONLY ONE MILTON CHRYSLER

*Based on 2004 year-end S.S.I. results for our dealer group verified by Daimler Chrysler Canada. **Price plus applicable taxes, admin, & lic. See Dealer for details.