

# The grass is always greener...

Continued from page 1

original motion, thus withdrawing the lands from the protected area.

However, on January 19, the Region of Halton approved a motion to hear delegates at its February 23 Planning and Public Works Committee meeting on a resolution to consider including these acres within the protected area.

"Regional Council believes this is the best approach to discuss the inclusion of the 4,700 acres in the Greenbelt plan and one which ensures the public has the opportunity to comment and participate in a meaning-

ful way," said Regional Chairman Joyce Savoline.

The provincial government's extension of the deadline for input on the Greenbelt Protection Act has been extended until March 9, allowing the Region more time for public consultation.

The Planning and Public Works Committee meeting will take place on February 23 at the Halton Regional Centre at 9:30 am. Delegates are encouraged to pre-register with the Clerk's Office by calling 905-825-6000 or 1-866-442-5866. All members of the public are welcome and encouraged to attend the meeting.

# 'A great place to live and work'

Continued from page 1

It is within municipalities such as Halton that the Chair of the Quality of Life Reporting System, Councillor Brenda Hogg, feels that more of an emphasis is needed when deciding on services and programs. "Municipalities need to be involved when federal and provincial policies are affecting the municipalities involved," she argues. "I think the federal and provincial governments need to realize that we are the first order of government that provides service to these communities."

## HALTON'S FINEST USED TRUCK CENTRE

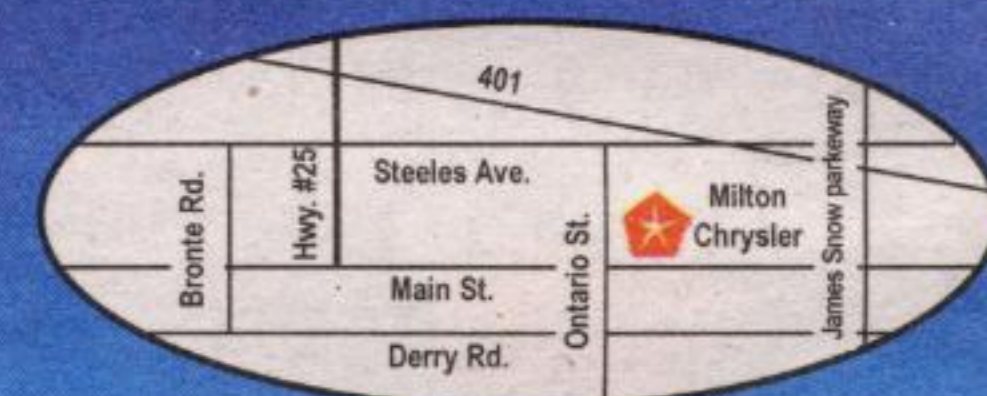
**#1 CHRYSLER DEALER IN CANADA FOR CUSTOMER SATISFACTION#**



**905-878-8877**

**81 ONTARIO ST. N., MILTON**

Visit us at [www.miltonchrysler.com](http://www.miltonchrysler.com)



One block north of Zellers

**THERE'S ONLY ONE MILTON CHRYSLER**

**CHRYSLER CERTIFIED PRE-OWNED VEHICLES**

Includes

**Chrysler Manufacturers' Warranty • 24 hr Emergency Roadside Assistance • 101 Point Mechanical Inspectioned • Reconditioned by Chrysler Technicians • 3 days/500 km exchange policy**

**2005 CHRYSLER 300**

Silver bullet, 3.5L 6 cyl, auto air, p. seat, pw & pdl, tilt, cruise, CD, alloys, traction control, bal of Chrysler warr. Stk #130929

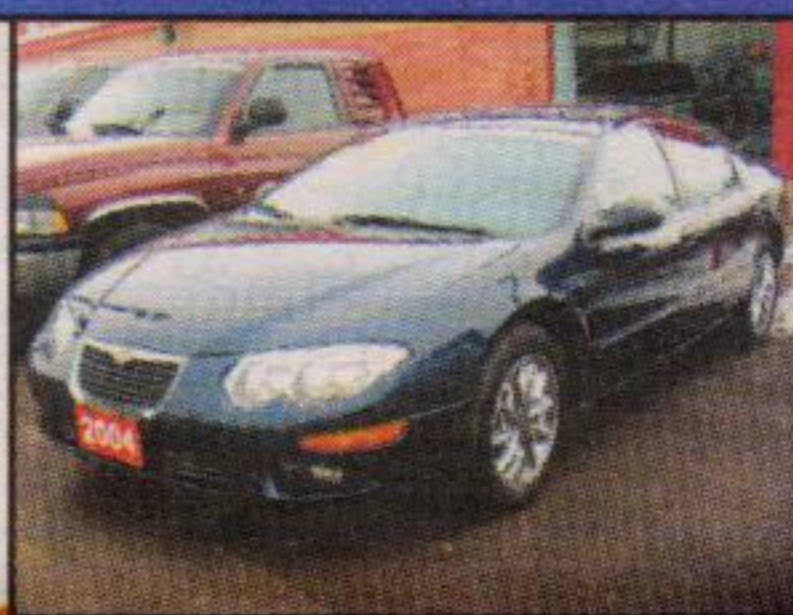


Only 29,000 km

**\$24,888\*\***

**2004 CHRYSLER 300M**

6 cyl, auto, air, p. seats, pw, pdl, tilt, cruise, CD, leather, moon roof, chrome wheels, bal of Chrysler warr. Stk #668843



Mint Condition

**\$22,788\*\***

**2004 JEEP RUBICON**

6 cyl, 5 speed, ps, pb, air, AM/FM/CD, 4x4, alloys, 2 tops, one owner, bal of Chrysler warr. Stk #705816

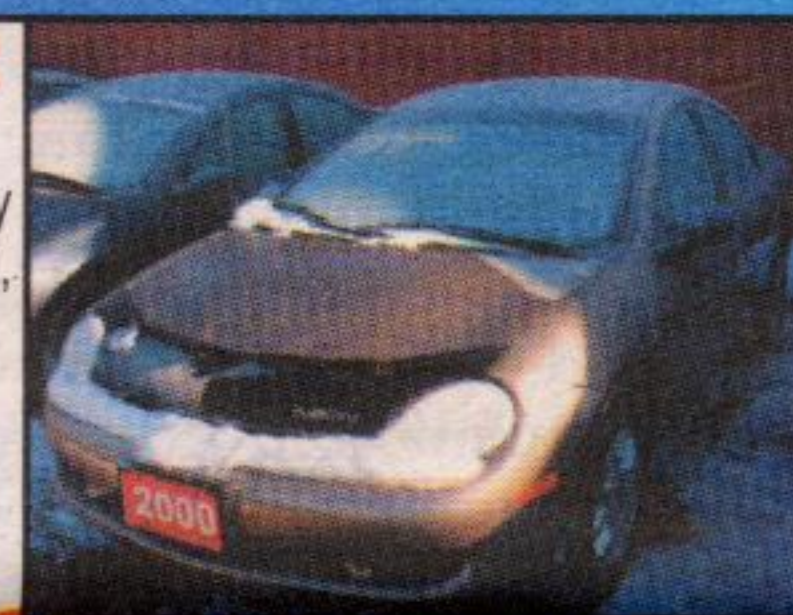


Buy Now For Spring

**\$25,888\*\***

**2000 CHRYSLER NEON LE**

4 cyl, auto, air, alloy wheels, cass & CD, Stk#741699



Priced to sell

**\$8,988\*\***

**2001 NISSAN SENTRA SE 2.0L**

4 cyl, auto, air, p moon roof, alloys, pw, pdl, tilt, cruise, rear spoiler, CD, buckets. Stk #130929



Just Arrived

**\$10,888\*\***

**2003 DODGE RAM 2500 HD 4X4 SLT LARAMIE DIESEL**

6 cyl, turbo diesel, 5 spd, leather heated seats, matching cap, air, pw, pdl, tilt, cruise, p seat, alloys. Stk #577198

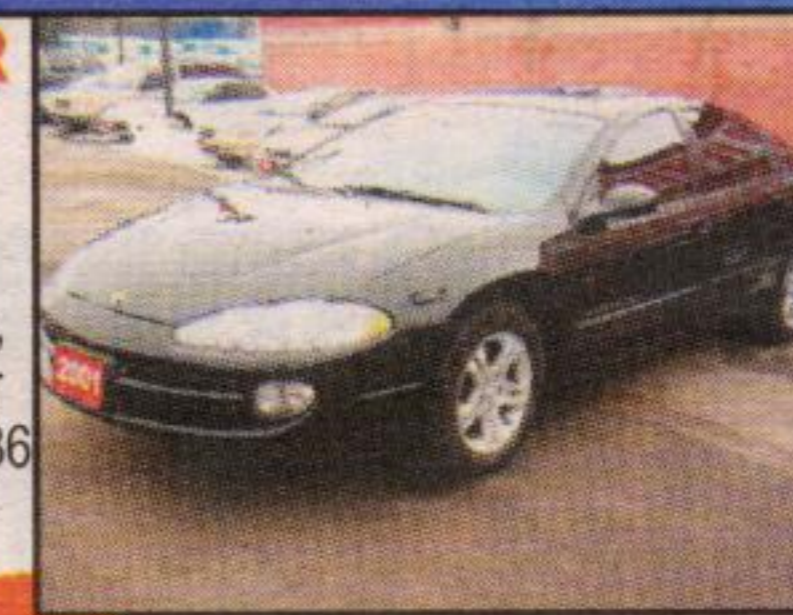


One Owner Truck

**\$38,888\*\***

**2001 CHRYSLER INTREPID ES**

3.2L 6 cyl, auto, air, p mirrors, pw, pdl, tilt, cruise, chrome wheels, moon roof, p seat, rear spoiler, CD Stk #673936



Black Beauty with only 27,000 km

**\$13,888\*\***

**2005 CHRYSLER PACIFICA TOURING**

3.5L V6, auto, air, pw, pdl, p. mirrors, p seat, alloys, 6 pass, bal of Chrysler warr Stk# 653082



Only 12,000 km

**\$29,888\*\***

**2001 CHRYSLER SEBRING LX**

6 cyl, auto, air, pw, pdl, tilt, cruise, AM/FM cass, Stk #724264



New Arrival

**\$10,888\*\***

**2000 CHRYSLER CIRRUSS LX**

Economical, 4 cyl, auto, air, pw, pdl, tilt, cruise, AM/FM/cass. Stk #130153



Only 84,000 km

**\$8,888\*\***

**1998 CHRYSLER CONCORD LXI**

6 cyl, auto, air, pw, pdl, p seat, tilt, cruise, AM/FM/CD, alloys. Stk #180922



Leather & Moon Roof

**\$8,888\*\***

**2003 DODGE DAKOTA CLUB CAB**

ONLY 22,000 km, 1 owner, 6 cyl, auto, air pw, pdl, pm, tilt, cruise, CD, ABS Stk# 261398



Only 22,000 km

**\$20,888\*\***

**2001 GMC SAVANA CARGO**

Air condition, automatic, AM/FM/cass, ps, pb, rear door glass. Stk #153359



Your workhorse is ready

**\$16,888\*\***

**2000 CHRYSLER NEON LE**

Affordable 4 cyl, auto, air, AM/FM/cass & CD changer, alloy wheels, rear spoiler, one owner. Stk #697625



Only 68,000 km

**\$8,888\*\***

**2002 DODGE RAM 1500 QUAD CAB SLT 4x4**

5.9L V8, auto, air, pw, pdl, tilt, cruise, CD, chrome wheels, tonneau cover, low km, st# 107615

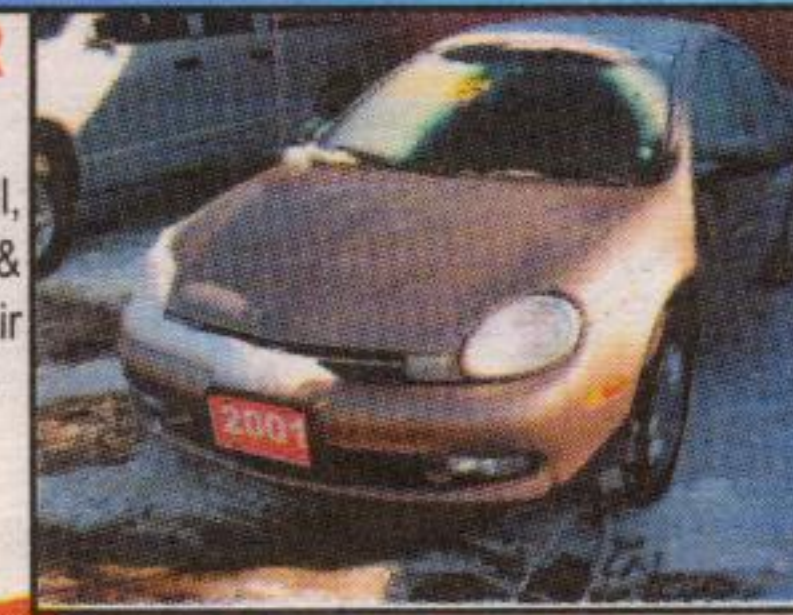


One owner Pampered Truck

**\$23,988\*\***

**2001 CHRYSLER NEON LX**

4 cyl, auto, air, pw, pdl, alloys, p. moon roof, CD & cass, p. mirrors, cruise, air bags, low km St# 162575



Mint Condition

**\$10,888\*\***

**2005 CHRYSLER 300**

3.5L V6, auto, air, pw, pdl, p seat, p. mirrors, CD, alloys, fog lights, bal of Chrysler warr. 2 to choose from



Silver & Vanilla

**\$25,888\*\***

**2004 CHRYSLER SEBRING TOURING**

Only 16,000 kms, 6 cyl, auto, air, pw, pdl, tilt, cruise, CD, alloys, traction control St# 296501



WOW only 28,000 km

**\$15,777\*\***

**2001 DODGE GR CARAVAN SPORT 4 DR**

6 cyl, auto, air, pw, pdl, CD, p. mirrors, AM/FM CD, roof rack, ABS, low, low km St#218598



Yes, Only 56,000 km

**\$14,888\*\***

**2004 DODGE DURANGO SLT 4X4**

4.7L V8, auto, air, pw, pdl, tilt, cruise, CD, alloys, running boards, bal of factory warr St#153659



Like New

**\$28,888\*\***

#Based on 2004 year-end S.S.I. results for our dealer group verified by Daimler Chrysler Canada. \*\*Price plus applicable taxes, admin, & lic. See Dealer for details.