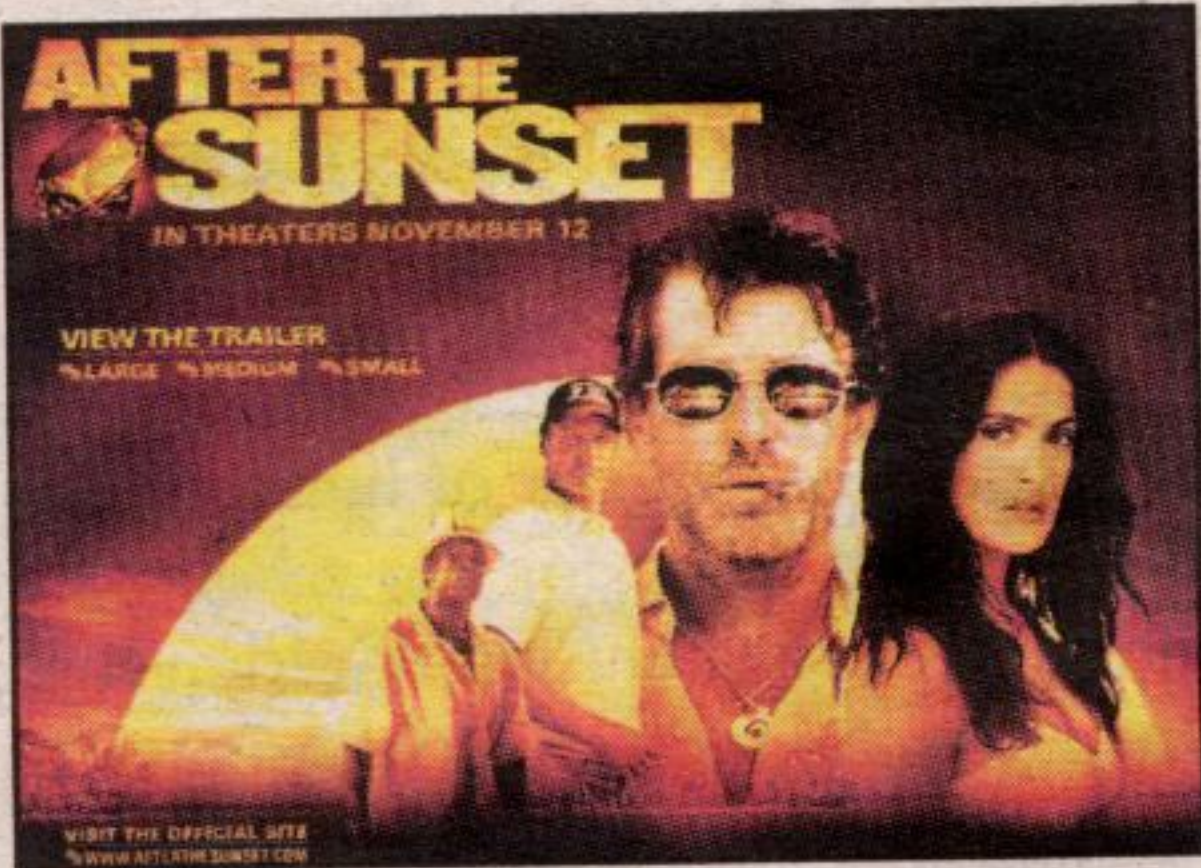


## film review

By LAURA COOK

### After the Sunset



Judging from the previews, one would expect *After The Sunset* to be slightly reminiscent of Pierce Brosnan's previous heist film *The Thomas Crowne Affair*. Although elements of the plot played right into the formula for a film about thieves, this particular storyline begins at the typical ending. Two renowned jewel bandits have completed several spectacular jobs taking the famous Napoleon diamonds and have decided to retire in the beautiful island of Nassau, Bahamas. Filmed almost entirely on location at the beautiful island resort Atlantis, Max Burdette (Pierce Brosnan) and his beautiful co-conspirator Lola (Salma Hayek) try to find solace in their financially secure future.

Being followed by FBI agent Stan (played by Woody Harrelson), the couple begins to question his motives for being on the island until they are accused of planning the theft of the last Napoleon diamond. Aboard the visiting cruise ship lies the remaining Napoleon diamond and its last public display means Max and Lola's last chance to complete their precious set. Unfortunately, Lola has already settled into happy retirement and doesn't want another conquest. Her husband is anxious to show off his tailored skills and becomes closely supervised by Stan. Knowingly being followed, Lola becomes suspicious of her fiancé's motivations for being on the island. Is it retirement or just another convenient location for a robbery?

Rated PG-13 for sexuality, violence and language, this fast paced thriller film runs for an hour and forty minutes in length. Pierce Brosnan's famous line in the film summarizes the ambiance of the film as he saddles up to the tiki bar, orders a Jack Daniels and asserts: "It doesn't have a fancy name, but if it was good enough for Frank, it's good enough for me." Similarly, if this film is good enough for Pierce Brosnan to act in, it's good enough for audiences to at least give it a chance.

## Concert review

### Variante Harp and Flute Duo perform at the Elm Tree Centre in Moffat

By DONNA DANIELLI



PHOTO BY DONNA DANIELLI

Performers (left for right) Mary Lynne Whyte, Nathalie Younglai, Catherine Richardson and Sam Cino enchanted the audience recently at the Variante Harp and Flute Duo Winter Dreams Concert. This concert was the inaugural event for the newly opened Elm Tree Centre in Moffat.

Anyone who has never used the term rollicking good fun to describe a harp and flute concert, has probably never heard the Variante Harp and Flute Duo perform that timeless classic *Making Whoopee*. Variante is an Italian word meaning to make variations on a theme, and it is also the perfect description of Nathalie Younglai and Catherine Richardson's collaborative efforts.

Their CD's have been featured on CBC and Classical 96.3FM but on November 20, they brought their entertaining and unique sound experience to the brand new Elm Tree Centre.

Located in Moffat, the Elm Tree Centre is a new gathering space for weddings, conferences and celebrations. It's brand - new all wood, Mennonite built Gallery Room made the perfect setting for the concert, which was the Centre's inaugural event.

Though more than thirty people came out on the dark and foggy night for the concert, the room fell to complete stillness from the first notes played by Nathalie and Catherine. From the opening number of *Song of Twilight* to the duo's encore number of *The Tarantella* they held the audience in the palm of their hands.

Their version of *Canon in D* was charming in its simplicity and powerful in complexity, their "Intermezzo" rang through the room like an animated conversation between two old friends. They became daring with a rendition of "Sakura", a dramatic and reverent Japanese melody before lifting spirits with a joyous, lilting version of "Go Tell It On The Mountain".

The most powerful moment of the evening's performance came when Mezzo Soprano Mary Lynne Whyte joined them for the powerful ballad from *Les Miserables*, "Bring Him Home". This perfect marriage of voice, harp and flute in a single harmony was mesmerising in its purity.

If any spirits dwell in the Elm Tree Centre, owner Martha Hoey can rest assured they were assuaged with the very fitting blessing of the new centre with the astounding talent at this opening concert. The Variante Harp and Flute Duo is an encounter that everyone should experience at least once in a lifetime.

## Georgetown Cinemas 3

Presents

TERRY SUMSION



at the John Elliot Theatre  
Georgetown  
December 3, 2004 8:00pm  
Adults \$19.00  
Seniors & Groups of 10 or more  
\$17.00  
Tickets available at  
The John Elliot Theatre  
&  
The Georgetown Cinemas 3

## On the way to Bethlehem

Friday, Saturday, Sunday and Monday  
**December 3, 4, 5 & 6, 2004**  
6:30pm - 9:00pm at Country Heritage Park  
8560 Tremaine Rd., Milton

"On the Way to Bethlehem" is an outdoor Christmas Nativity Pageant. On arrival, visitors will enter the large reception area (Gambrel Barn), partake of refreshments, enjoy the music of the mass choir, and, when ready, small groups will travel the road to Bethlehem with a "guide." On their 20-30 minute journey, visitors will witness King Herod's court, interact with Roman soldiers, shepherds, magi, innkeepers and fellow travelers to reveal the Christmas story. At the end of the "journey" visitors will be given a wagon ride back to the exit where their passports will be stamped.

**NO ADMISSION CHARGE — Free-will Offering**

Enjoy a home-cooked church supper prior to your journey for only \$10 each, children half-price. All dinners must be pre-booked. Email your request to [nativity2004@canada.com](mailto:nativity2004@canada.com) or phone 905-864-7127.

This production is a cooperative project of Milton Area Christian Churches Working Together