

# THE HALTON COMPASS

Published by  
**MRK Communications Ltd.**

35 Crawford Cres., Box 129,  
Campbellville, ON L0P 1B0

PHONE: 905-854-3333 FAX: 905-854-4761

CLASSIFIEDS: 905-864-6098

EMAIL: info@haltoncompass.com

**Publisher and Editor:** Stephen Baker  
**Office Manager:** Audrey Allison  
**Executive Assistant:** Cathy McLeod  
**Production Manager:** Karen Coleman  
**Designers:** Lynn Chudleigh, Brandon Porter  
**Journalists:** Donna Danielli, Jennifer Enright, Laura Cook, Ann Kornuta, Dave Deveney  
**Advertising Manager:** Louise Cook  
**Sales Representatives:**  
Elaine Thomas, Trish Burkholder  
**Classifieds:** Jozien Allan  
**Humour:** Jeffrey Mueller

The Halton Compass is published weekly on Friday. Copy and advertising deadline is Monday at 5pm prior to publication. All editorial and advertising content is copyrighted and the sole property of MRK Communications Ltd. The Halton Compass is distributed to homes and businesses throughout the rural and urban communities of Halton, encompassing Acton, Erin, Georgetown, Kilbride, Milton, Rockwood, rural Oakville & Burlington and surrounding areas.

**Circulation: 49,236 Homes, Businesses and Subscribers**

**Compass Subscriptions:** 52 issues per year: \$104.00 plus GST

Cheques payable to: **The Halton Compass**  
35 Crawford Cres., Box 129, Campbellville, ON, L0P 1B0  
EMAIL: circulation@haltoncompass.com

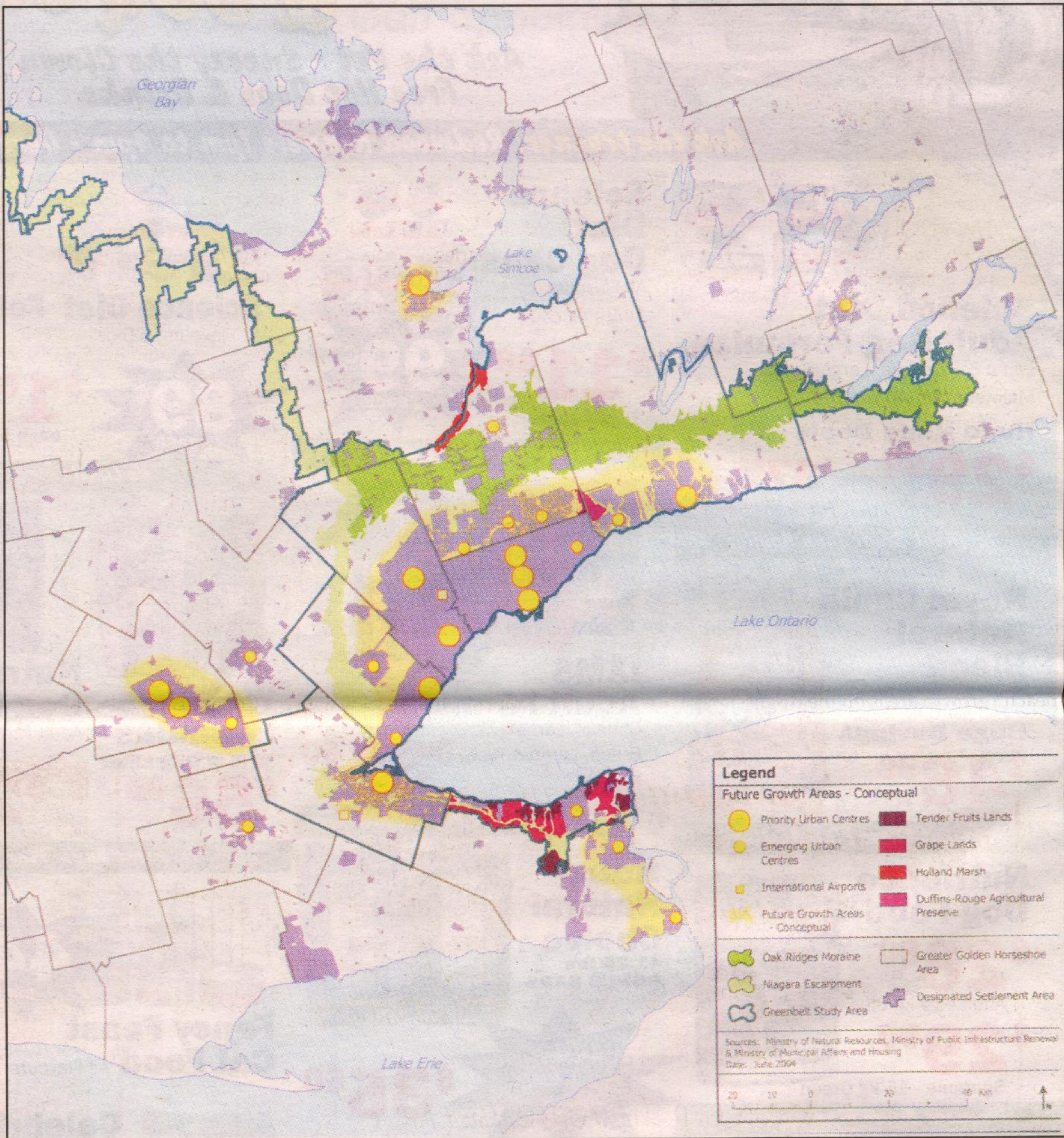
## EDITORIAL

Opinions are like belly-buttons. Everyone's got one, and nobody finds anybody else's particularly appealing. Opinions are OK, so long as they are not forced upon the rest of the world.

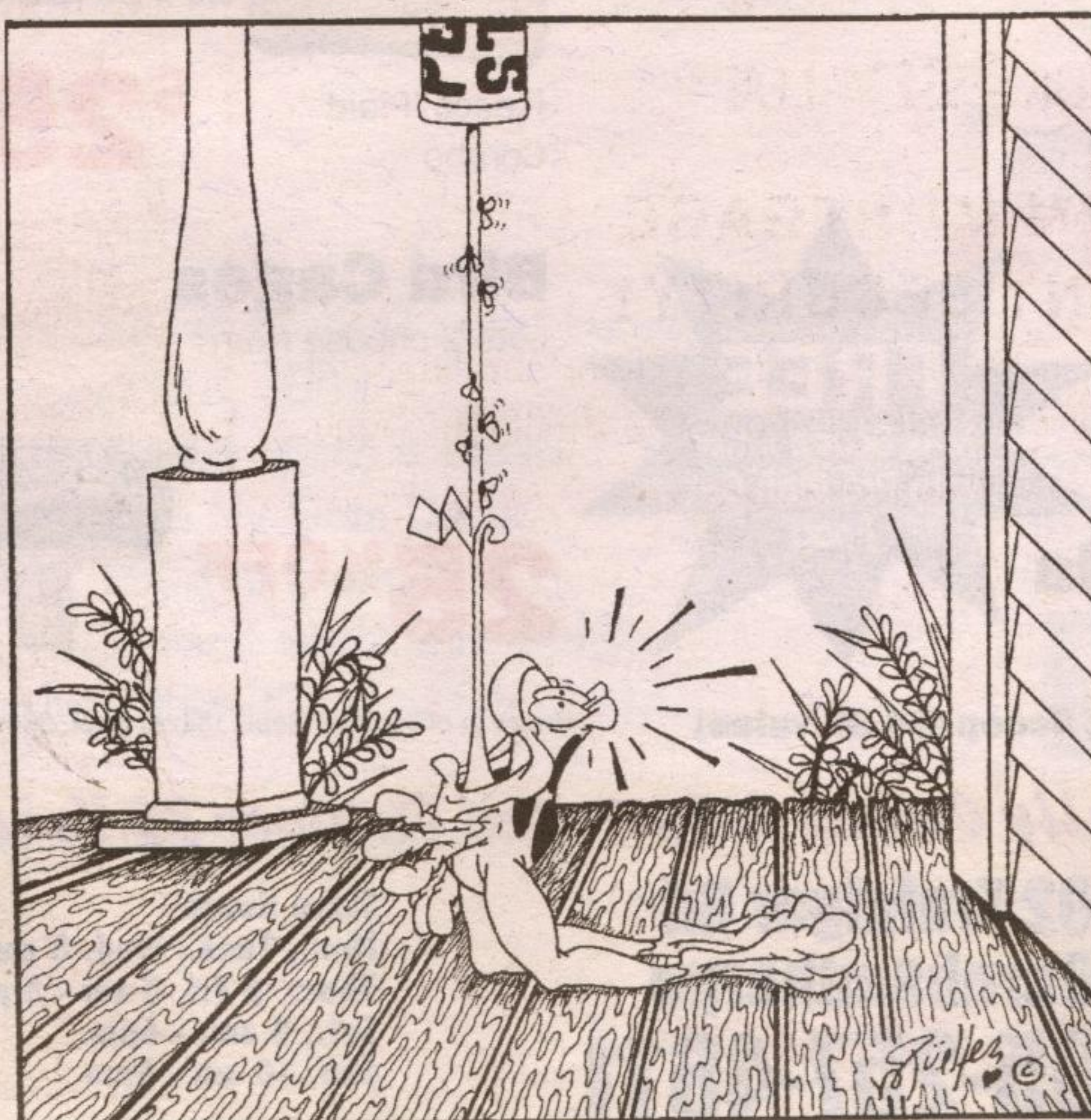
I wince at the modern fashion of low slung jeans that put tattooed and pierced navels front and center. It's not the expanse of flesh that makes me cringe, it's the painful looking jewelry that makes me queasy. Pain is not something that I'm attracted to.

I also don't much care for John Kerry's opinion on the waste issue, and I'm pretty sure that his navel would leave me cold as well. Navel gazing, as a contemplative pursuit, is not currently in vogue. Politicians like Kerry tend to shoot from the hip, without giving much time to considering the full implications of their actions. After all it's the votes of Joe Public that count in the States, not the goodwill or opinion (that word again) of the neighbours to the north. Not that I think that his basic sentiment is flawed. Garbage disposal is not something that any community should expect its neighbours to handle for it.

Kerry seems to resent Michigan making a quick buck by agreeing to be Toronto's trash-can. We in Halton are afraid that with options limited by a closing of the border, Toronto will then cast avaricious eyes at our waste sites. With a stroke of the Provincial pen we could be playing Cinderella to Toronto's Ugly Sister. If that happens I'll bet my belly-button that we don't even get paid for our troubles, at least not at the level Michigan was.



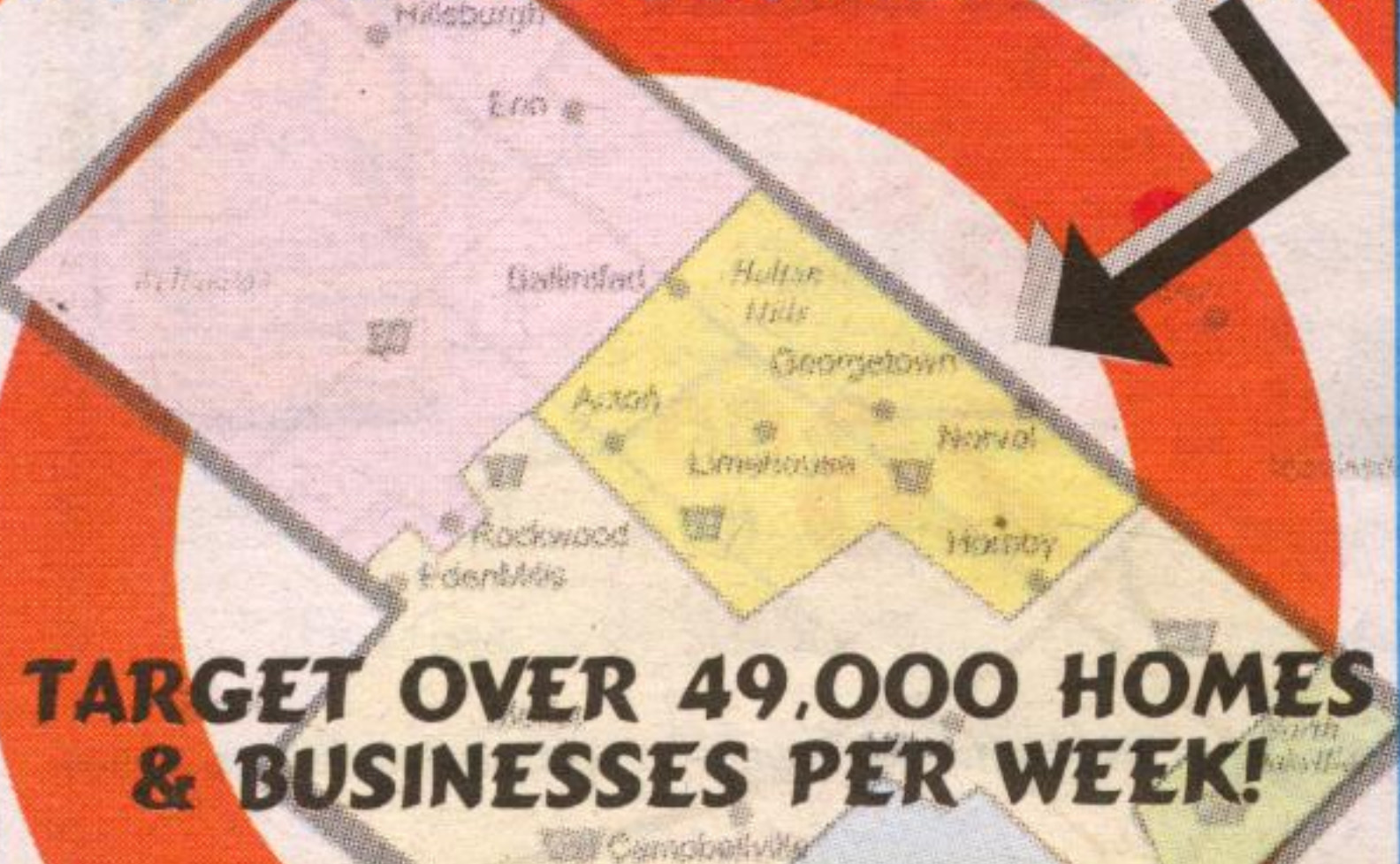
LITTORAL VIEW by: Jeffrey Mueller



Map from the Province's "Places to Grow" discussion paper, showing the future growth plan for the Greater Golden Horseshoe.

# THE HALTON COMPASS

PLACE YOUR AD HERE



**TARGET OVER 49,000 HOMES & BUSINESSES PER WEEK!**

35 Crawford Cres., Box 129,  
Campbellville, ON L0P 1B0

PHONE: 905-854-3333 FAX: 905-854-4761

CLASSIFIEDS: 905-864-6098

EMAIL: info@haltoncompass.com

# THE HALTON COMPASS

**Welcomes letters to the Editor**

However, we do not necessarily support or endorse the comments or opinions expressed by the writer(s). We reserve the right to edit, revise and reject letters. Letters must be signed and the address and telephone number of the writer should be included. Letters may be sent into 35 Crawford Crescent Box 129, Campbellville, ON L0P 1B0, emailed to editor@haltoncompass.com or faxed to 905-854-4761.

© 2004 Littoral View Comics