


**The Regional Municipality of Halton**  
A Partnership That Works!



## Notice to Rural Residents

### Rural Garbage Collection Survey

Are you interested in receiving roadside garbage collection services from Halton Region? Halton Region and the City of Burlington have sent a survey to rural residents to find out if they want roadside collection services.

In early September we distributed a survey that unfortunately did not reach all residents. In order to ensure that all residents have the opportunity to voice their opinion on the issue of roadside garbage collection, Halton Region has issued a second survey.

The new survey is identified as the 'October Survey' and has a red coloured bar down the left side of the survey. Please fill it out and return it by **November 5, 2003**. All residents will receive a postage paid, pre-addressed envelope that can be used to return the survey to the Region.

For more information call Halton Region at 905-825-6000. Toll free: 1-866-4HALTON (1-866-442-5866) or the City of Burlington at 905-335-7777.

## HALTON REGION

### YOU ARE INVITED TO PARTICIPATE

#### City of Guelph Water Supply Strategy Class Environmental Assessment Arkell Spring Grounds Municipal Wells

The City of Guelph has requested comment on a proposal to increase the wellfield capacity at their existing Arkell Spring Grounds by 6.4 m<sup>3</sup>/min to 20 m<sup>3</sup>/min (approximately 1,400 gallons per minute (gpm) to 4,400 gpm).

The Planning and Public Works Department of the Regional Municipality of Halton are inviting staff from the City of Guelph to attend a Public Information Centre specifically for Halton residents in the vicinity of the Arkell Spring Grounds to identify the potential impacts that increased water taking at the Municipal Wells may have on the private well supplies servicing Halton residents in North Milton.

The Region invites you to attend the Public Information Centre to learn about the Class Environmental Assessment and your rights under the Ministry of Environment Permit to Take Water Process.

Date: Monday, November 17, 2003  
Time: 7:00 p.m. to 9:00 p.m.  
Location: Nassagaweya Community Centre  
11264 Guelph Line Brookville  
Brookville, ON

Regional staff will also be present to answer any questions that you may have concerning the Region's own groundwater investigations and Aquifer Management Plan.

Please contact the following individual should you have any questions or require additional information.

Lee Anne Jones, P. Eng.,  
Manager, Infrastructure Planning  
Regional Municipality of Halton  
1151 Bronte Road  
Oakville, ON L6M 3L1  
Phone: 1-866-4HALTON (1-866-442-5866)  
Fax: 905-847-2192  
E-mail: jonesla@region.halton.on.ca

1151 Bronte Road, Oakville, ON L6M 3L1  
905-825-6000 Toll free: 1-866-4HALTON (1-866-442-5866) TTY 905-827-9833  
or visit us at: www.region.halton.on.ca

## COMMUNITY CORNERSTONE

### MIKE LEDWITH

BY DONNA DANIELLI

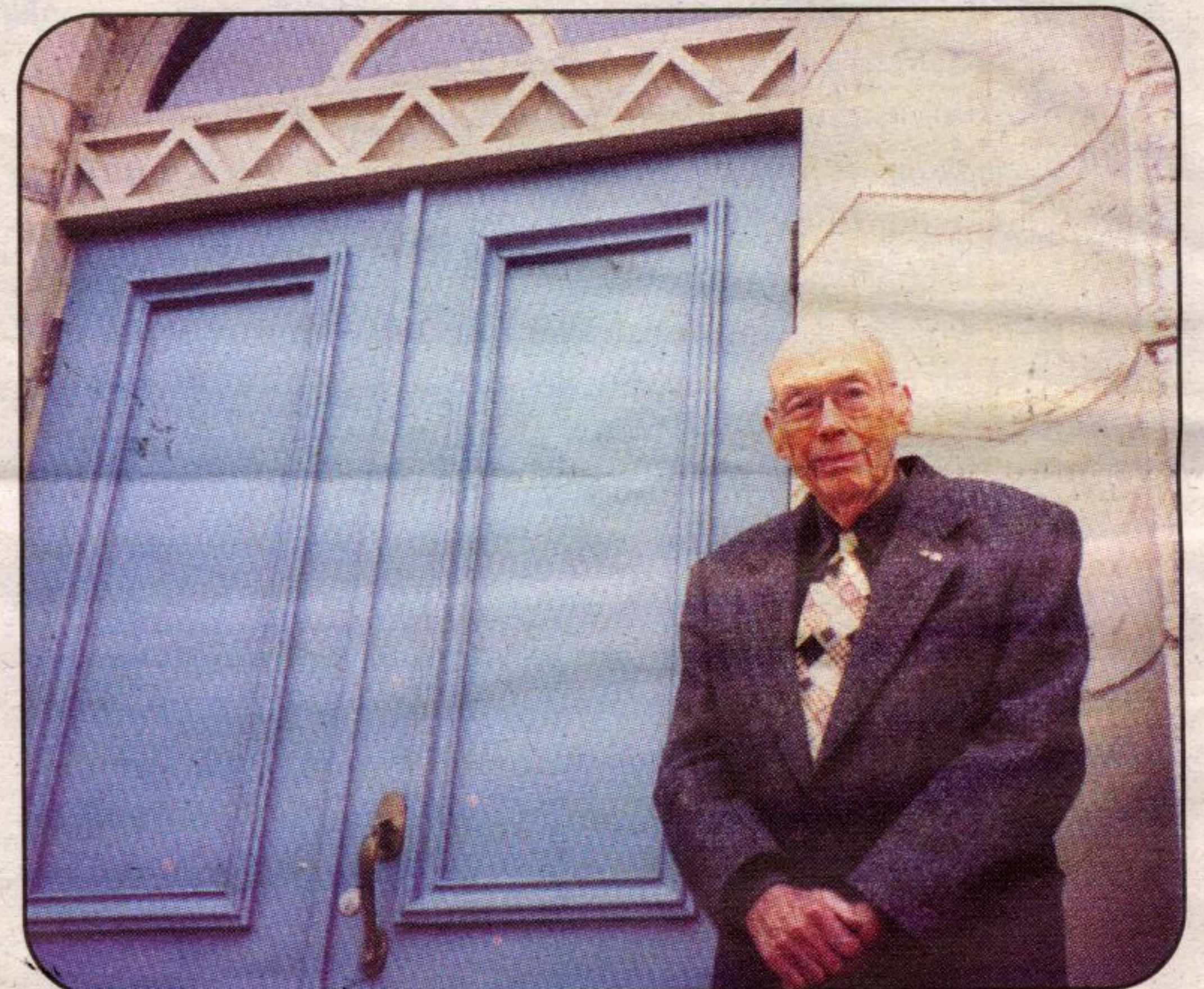
Speaking with Mike Ledwith is like opening a door to the Town of Milton's past. With his near-perfect recollection of events and people long past, Mr. Ledwith is a fount of information.

The son of Gym Ledwith, a former conjurer turned storekeeper, Mr. Ledwith first came to Canada from Blackpool, England when he was six years old. He grew helping his at his father's store in Dundas, but planned to become a draftsman in a machine shop after his stint in the Navy in World War II. A trip to Milton visiting a friend's restaurant led to a life-altering change in his plans.

"When I first saw the town I thought it was the Wild West," jokes Ledwith, recalling the horses tied outside Kennedy House (what is now Bryden's on Main Street). After touring a small, family-owned grocery store on Main Street, he used his \$3,000 War Service Gratuity to purchase Quality Greens. He took in \$47 on his first day of business and soon expanded to include a neighbouring property. He also saw the wisdom of owning

all the nearby parking lots for his customers' convenience. The business grew from \$800 in sales that first week to over \$2 million dollars per year when he sold it in 1970. "I still miss it. I'm a grocer at heart. When I sold the store, I knew everyone in Milton by name and where they lived."

Although he spent time as a real estate appraiser before retiring, it is for his charitable side that Mr. Ledwith is most well known. Over 20 years he lent thousands of dollars of his own money to those struggling to buy their own homes, always at interest rates lower than those charged by banks. He served on the Milton District Hospital Board from 1959 to 1970, and on the Board and as an elder for the United Church for 20 years. He has lent his name to such organizations as Milton Millennium Community residences, and was a charter member of the Milton Rotary Club. Mr. Ledwith recently celebrated 57 years of service with the Rotary Club, a term that has seen him serve as District Governor over 56 clubs, and as the Chairman who



Former Milton Mayor Mike Ledwith

PHOTO BY DONNA DANIELLI

# The United Way of Milton

presents

## A Town & Country



A Fundraiser Lunch is being held at **Harrop Restaurant and Art Gallery**.

\$15 tickets (including taxes, gratuities, and a \$3 United Way donation) will be sold in advance. Serving warm open-faced grilled chicken sandwich with roasted sweet peppers and chevre, garden salad, warm apple and cranberry crumble with caramel sauce and tea/coffee.

Tickets for both activities are available from:

The United Way of Milton, 1 Chris Hadfield Way, Milton 905-875-2550;  
Kalena Flowers, Main Street, Milton;  
A Country Mile, Main Street, Milton;  
Brancier's Jewellers, Milton Mall, Milton;  
Crispin's, Main Street, Campbellville.

Featuring six Milton, Campbellville, Moffat and area homes decorated for the Christmas Season

Saturday, November 22, 2003 • 10 a.m. to 5 p.m. • Tickets \$20

Have a fun day, discover great decorating ideas  
and support your community!

This ad has been sponsored by:

**SURE-LOCK INTERLOCKING**  
A12-50 Eglinton Avenue We., Ste. 310,  
Mississauga, Ontario  
905-607-5621

Specializing in interlocking driveways,  
walkways, patios, pool decks, curbing,  
retaining walls, sodding and snow removal.

**jjBarnicke**  
Worldwide Real Estate Services

J.J. Barnicke Limited  
3 Robert Speck Parkway, Ste. 250,  
Mississauga, Ontario  
905-848-1215