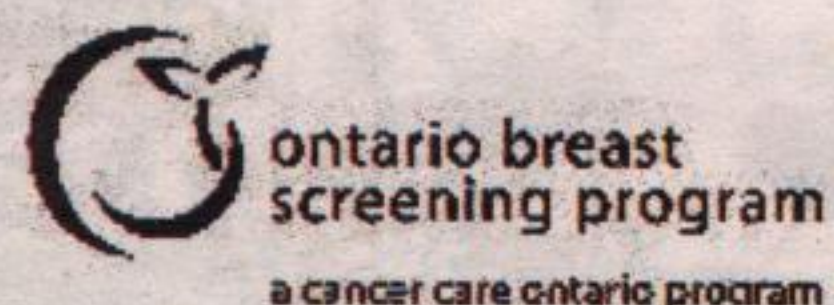


Are you a woman age 50 or over?
Finding breast cancer early could save your life!
 Call to book an appointment for your mammogram at the:



William Osler Health Centre
Georgetown Hospital Campus
 1 Princess Anne Drive
 905-873-0111 ext. 47236

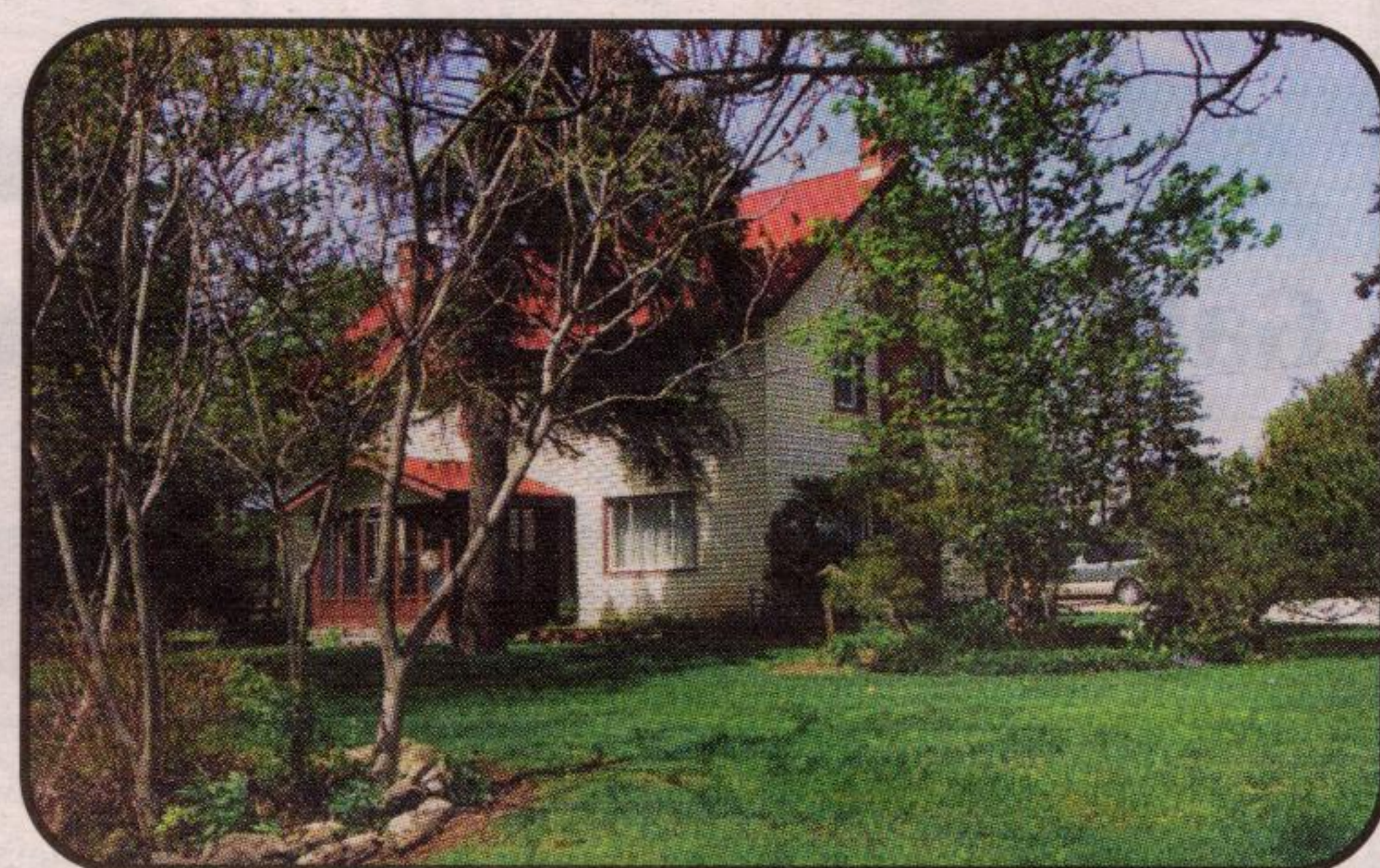
For other program locations near you, call 1-800-668-9304.

October is Breast Cancer Awareness Month. The Halton Women's Health Alliance encourages all women to "Take Time to Care for You" See your doctor for a breast exam and Pap test.

For more information, please call Halton Region Health Department at 905-825-6000 ext. 7829 TTY 905-827-9833 Toll Free 1-866-442-5866

North Halton Home of the Month

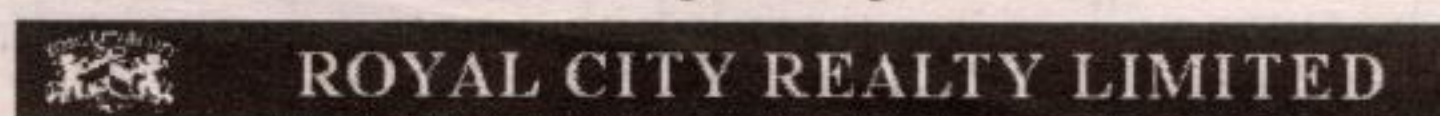
Horse Lover's Dream Farm



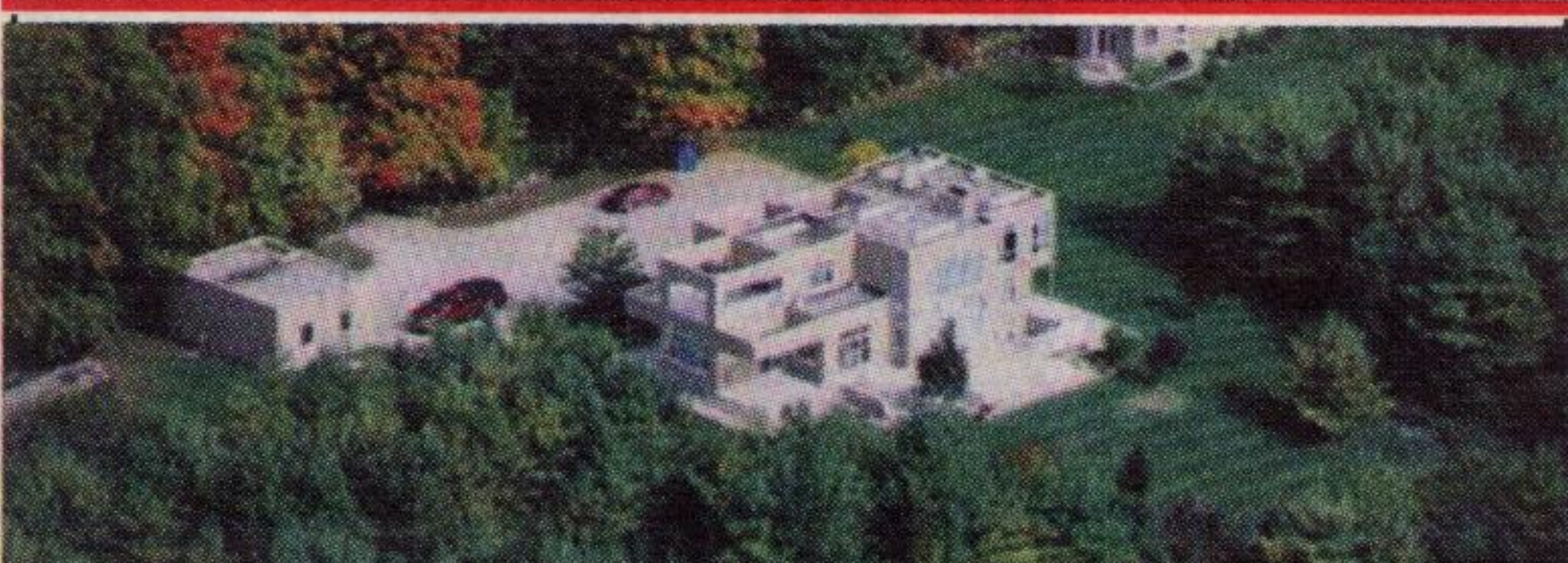
Presently a standardbred operation with easy access to the GTA's major arteries. An excellent horse farm with 34 stalls with an airy renovated bank barn with plenty of room for hay and bedding for your equine friends. Farm also includes a tack room, 10 paddocks, and a stone dust jogging track. Just a stone throw from Mohawk Raceway. The 2600 sq. ft. 2-storey home is well maintained, has been extensively renovated and boasts 4 bedrooms, separate dining room, office, country kitchen, a spacious living room, and lovely gas fireplace. Property nestles in by the Niagara Escarpment and features a beautiful pond.

Call Willie Essery** & Sabrina Essery* at (519) 824-9950 ext. 215. Lists for **\$975,000**

For Home Flite click on www.royalcity.com



ROYAL CITY REALTY LIMITED



\$995,000 - STUNNING RETREAT

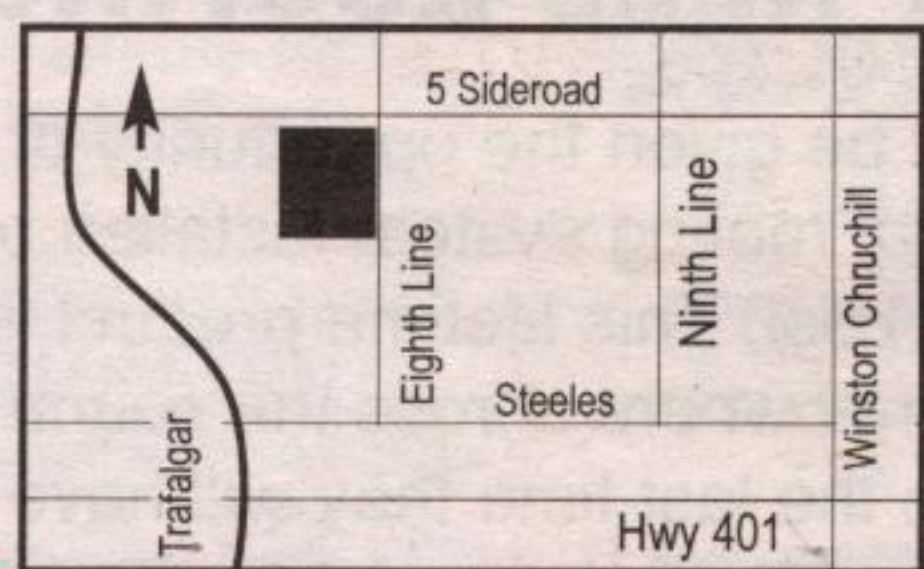
21 acres of mature forest with walking trails and ponds form the setting for this Bauhaus-inspired, architecturally designed, contemporary home. An abundance of windows offer a breathtaking view of the countryside. Soaring ceilings, pure lines, full wall fireplace, a master bedroom wing with 5 pc. ensuite and huge dressing room, in all, 3380 sq. ft. of recently redecorated space plus finished walk-up level. Mechanically updated. Extensive fencing and landscaping plus a large deck have been added since acquisition. There is a detached 3-car garage as well as a charming freestanding studio or potential guest house. Located in Puslinch with easy access to major arteries. Truly a find!

Call Willie Essery (519) 824-9950 ext. 215
ROYAL CITY REALTY • 519-824-9050
 For Home Flite click on www.royalcity.com

D.G.'s Greenhouses

Fall Selections Now Available

- Mums
- Pansies
- Ornamental Cabbage and Kale
- Fall Planters
- Asters, etc.



8890 8th Line, RR#2, Georgetown
905-877-9842
HOURS
 7 Days a week, 9 a.m. to 6 p.m.



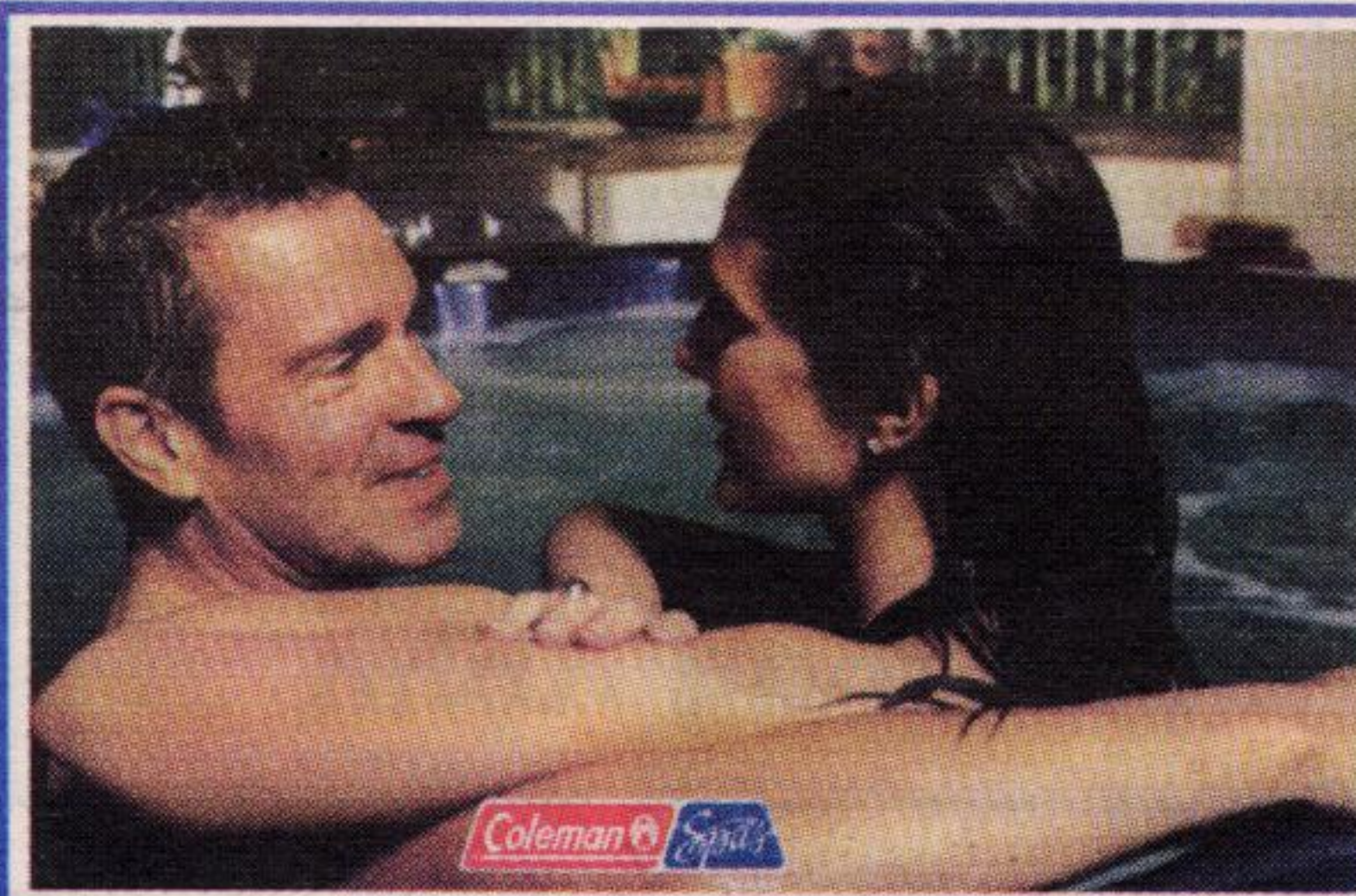
COMFI INTERIORS
 Where we make you feel at home

Residential & Commercial

- Carpet • Vinyl • Ceramics • Hardwood
- Paint • Wallcoverings • Free Estimates
- Shop at home Service
- Installation • Insurance Repairs
- Ask about our Design Service

845 Main Street E., Milton

Exclusive to Comfi Interiors: KARNDEN affordable design flooring
905-878-4280



WHAT DOES THERAPY MEAN TO YOU?

THERAPY IS MANY THINGS ■ Therapy can be the rejuvenation you feel as the water gently massages your tired aching muscles. Or the moments of peaceful tranquility that surrounded your inner soul. One thing is certain however. Therapy can be found in the trust and reliability of a Coleman Spas by MAAX hot tub. Call us. And find out what therapy can mean to you.



Remember our Name. And Relax.
www.colemanspas.com

HALTON POOLS N' SPAS Ltd.

845 Main Street E.
 (Across from GO Station)

(905) 878-7087

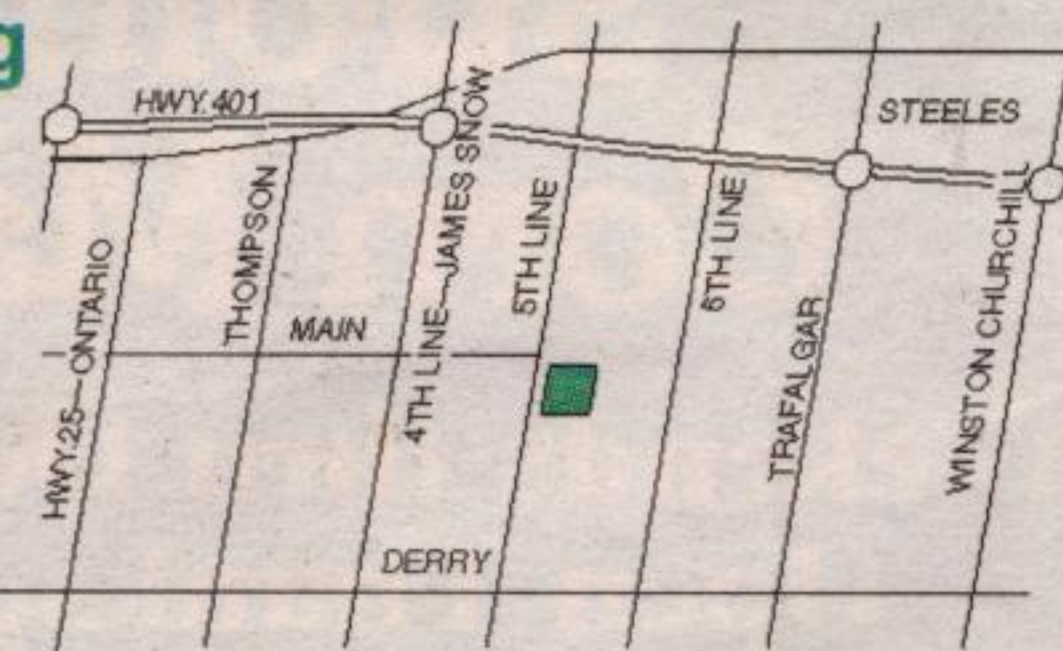
Taylor Nursery

OCTOBER: Decorate for fall and Thanksgiving

- ... Time to fill your yard/patio with fall flowers.
- ... Time to plant trees and shrubs for next spring.
- ... Time to start the fall cleanup and top up mulch.

Your Town and Country Gardening Centre

7429 Fifth Line, Milton
 Right at the east end of Main Street **905-876-4100**



HOURS: Monday to Friday: 7-7
 Saturday: 9-7 • Sunday: 10-5