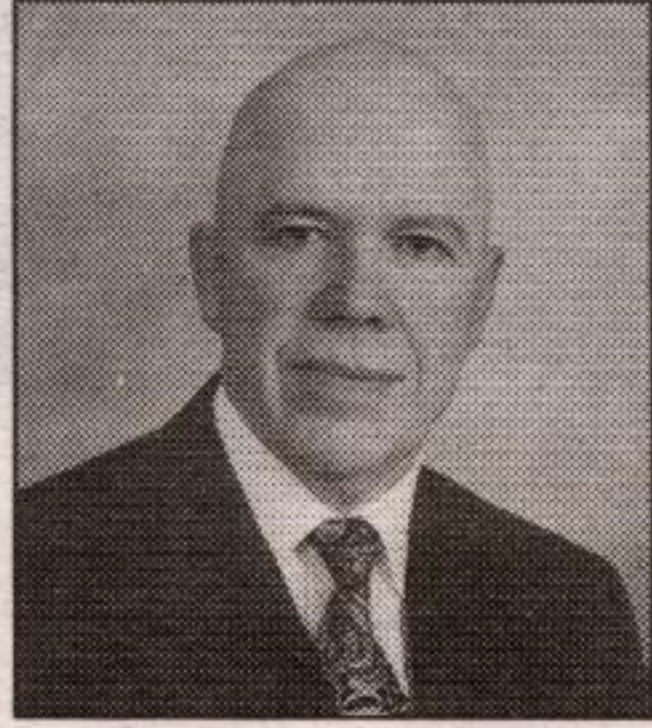




We look at the whole picture.

Protect your family tree.

We offer comprehensive insurance and estate planning for you and your family.



Lou Mulligan, CFP, RHU

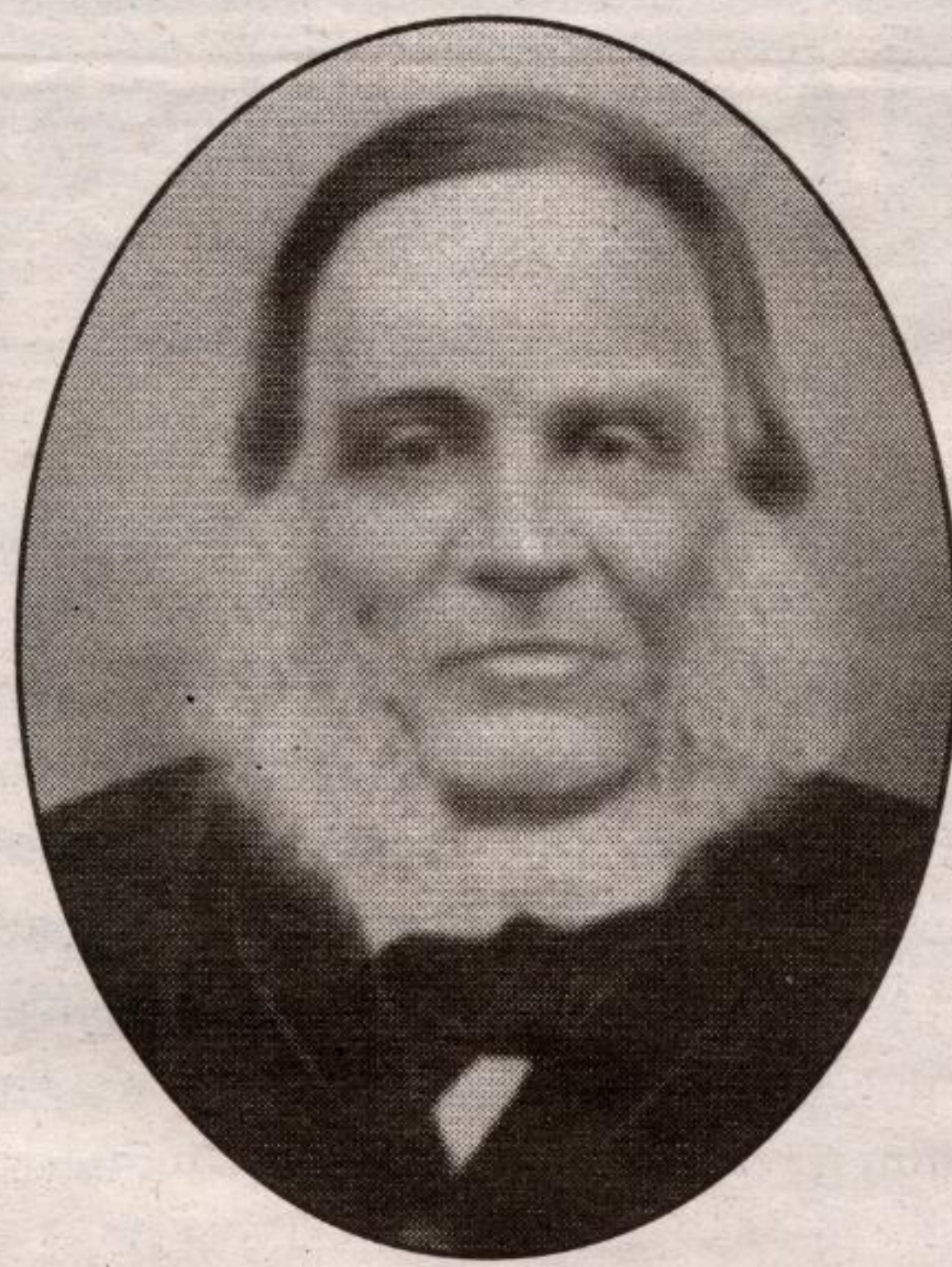
MONEY CONCEPTS

AEGON
Dealer Services
Canada Inc.

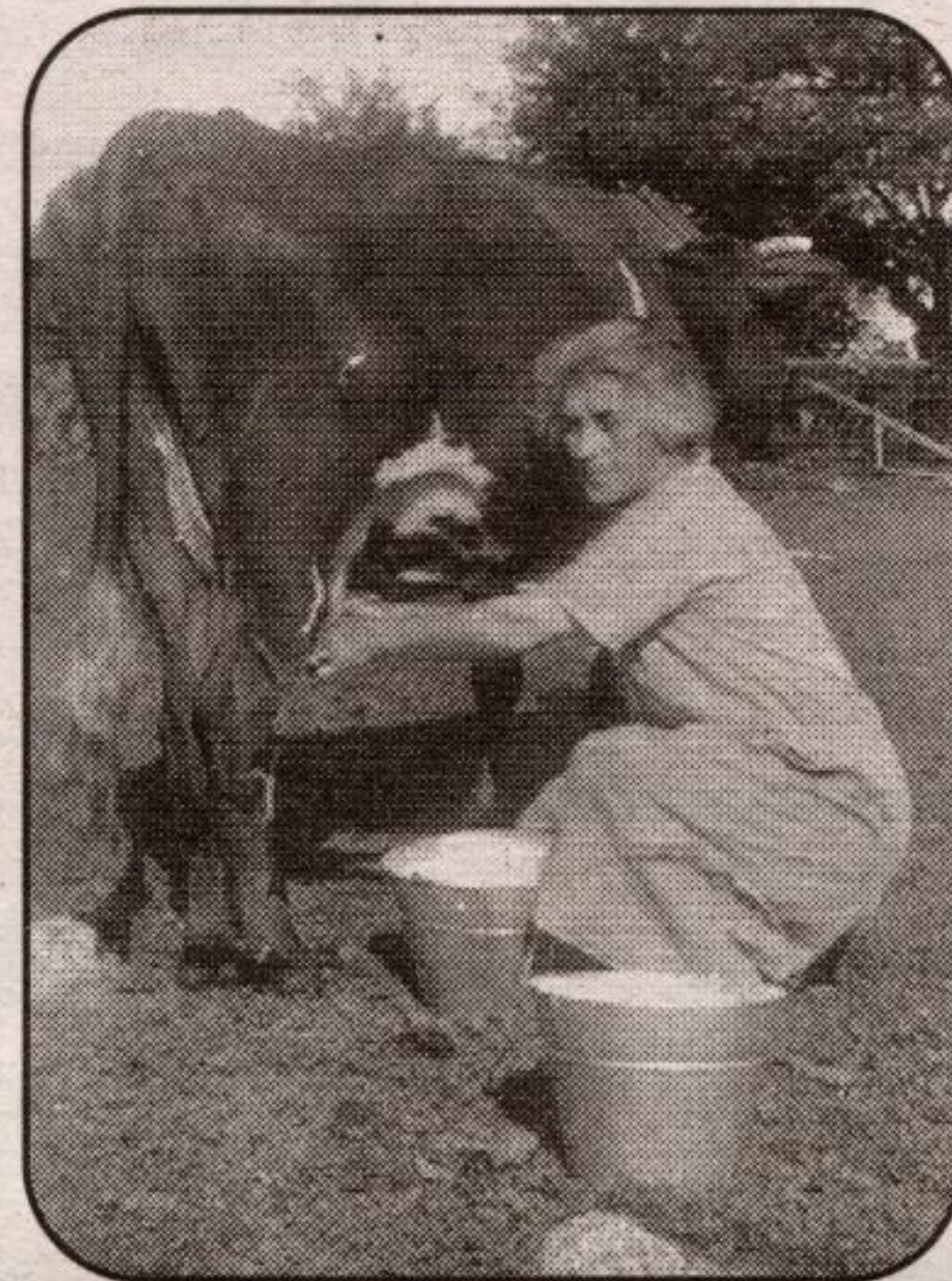
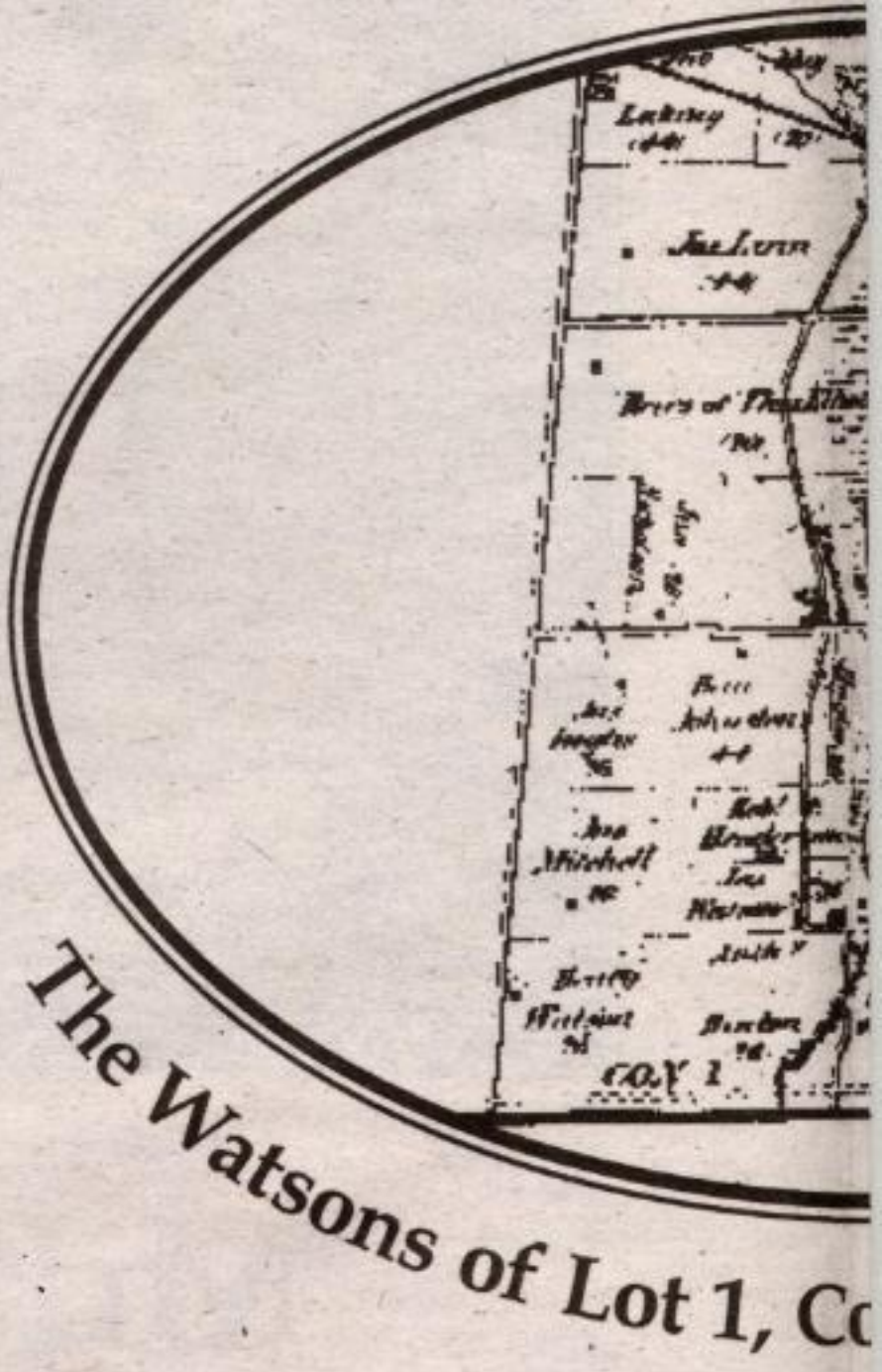
420 Main Street East,
Milton

905-876-0940

Money Concepts Group Capital Corp. and National Financial Insurance Agency Inc.



Henry Watson & Nancy (Stubs) Watson
~ circa 1860 ~



Bill (above) and Jessie Watson (left) attend to milking chores on lot 1, Conc. 1, E¹/₂, Nassagaweya ~ circa 1910 ~

Richard Watson (1780-1854) married Elizabeth Carter (1788-1869) in London, England, and then came to North America to start their family. Their first son, Henry, was born in Hollowere, Massachusetts in 1807. Henry had 11 brothers and sisters, most of which were born in Canada where the family moved in the early 1800s. Henry married Susan Rowe and homesteaded on Lot 1, Conc. 1, W¹/₂, Nassagaweya Township in the 1830s. They had several children and when his wife died, Henry married Nancy Stubs (1840-1907). Their children included William Stubs Watson, Sam, Charlie, George, Harry, Jim and John.

William Stubs Watson married Mary Meredith and had two sons, Will and Frank, and two daughters, Etta and Bessie. Mary Meredith died when Bessie was born on the farm Lot 1, Conc. 1, E¹/₂ Nassagaweya. William then married Jessie McLaren in 1905, the daughter of Donald McLaren and Catharine Cameron. The Cameron family farm is the present site of Mountsberg Game Farm. They settled down on the farm at Lot 1, Conc. 1 E¹/₂ to raise their only son Donald Cameron Watson, along with the children of Bill's first marriage.

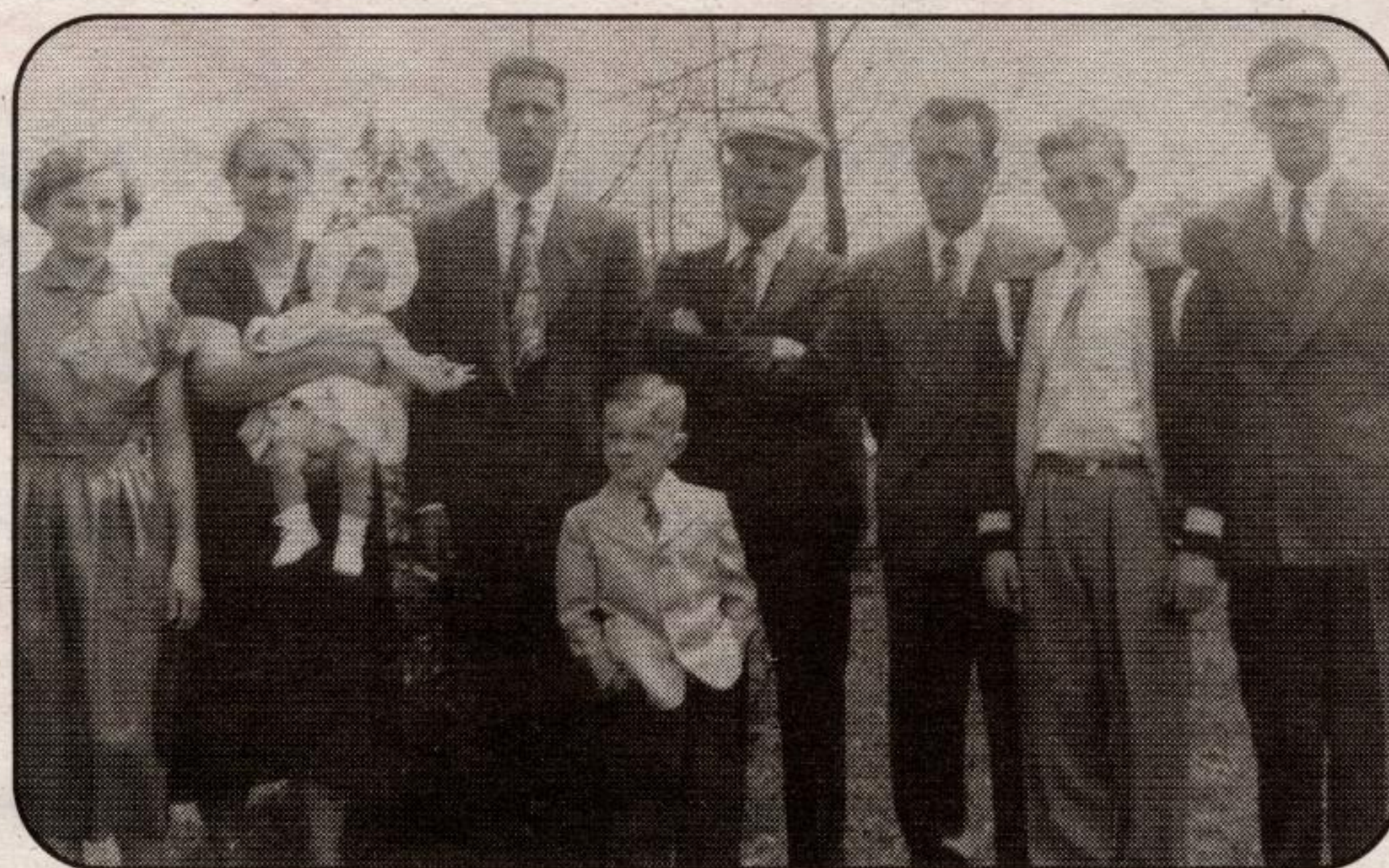
In 1911 the CP railway split the farm in half. As the good apple orchard was uprooted, Bill received \$500 compensation for the CPR right-of-way. The money was used to construct a new stone stable to the old barn as seen in an accompanying photograph.

The 12 Mile Creek ran through Bill's farm and split into two branches just north of Steeles Avenue (then known as Upper Base Line). In the early 1800s the western branch was dammed up and a sawmill was constructed. Remnants of the dam and mill foundation can still be seen. An outbuilding used for storage at the mill was relocated to the farm, had additions added and still serves as the farmhouse today.

George Watson was a stonemason and farmed in Nassagaweya for many years. He and his family built cement blocks on site and constructed many of the silos still seen today in northern Nassagaweya, Eramosa and Erin Townships. George's daughter



Three Generations of Watsons: Bill Jr., Cam & William Sr. ~ 1929 ~



Cam Watson family on SS#1 School Farm, Lot 3, Conc. 3, Nassagaweya ~ circa 1952 ~
From left to right: Joan, Eva, Anne, Jim Larny, Cam, Ron, Peter, William Jr.

Richard Watson
b. 1780, d. 1854



Watson Family Tree

Elizabeth Carter
b. 1788, d. 1869

Henry Watson
b. 1807, d. ?

m1. Susan Rowe
b. 1859, d. ?

m2. Nancy Stubs
b. 1840, d. 1907

Note: Richard and Elizabeth had 11 other sons and daughters, most of whom were born in Canada

Henry and Susan had several children

William Stubs Watson
b. 1860, d. 1935

m1. Mary Meredith
b. 1863, d. 1889

m2. Jessie McLaren
b. 1865, d. 1938

Sam

Charlie

George

Harry

James

John

Partial direct line for the Watson family of Lot 1, Conc. 1, Nassagaweya. Photos and background information courtesy of Jim Watson. Compiled by Deborah Quaille.

• Pioneers in practical, energy-efficient housing

• Small-scale company providing constant on-site supervision and personal interaction with clients

• Uniquely crafted homes, additions and renovations

• Extreme care taken in choice of building material for quality and chemical composition

• Barrier-free access and attention to other special needs is 'our standard'

"We believe we build the most efficient and comfortable homes in Ontario."

BRADEN HOMES LTD

(519) 856-9306

Fax:
(519) 856-9611
Rockwood,
Ontario

Visit us at our new web site!

www.bradenhomes.ca

Some things are just not worth the gamble.
[Moving? Get a great truck at a great rate - guaranteed.]
88 Ontario St N #5, Milton 164 Guelph St., Georgetown
905-875-3738 905-877-7777
1-800-THRIFTY 357 Queen St., Acton
905-853-9287
Thrifty Car Rental

Bite me. [With confidence.]