

NATURE'S FIRE
Quality Educational Toys, Games & Activities

Creativity for Kids

Cool crafts for March Break!



223 Main Street (at Martin St) Milton
(905) 878-0084
www.NaturesFire.com

SURVEYING THE REGION

The North Halton

Compass

Bergsma's Home Decor

- Paint
- Wallpaper
- Lighting
- Window Coverings
- Home Decor & Accessories

905-876-4922

Downtown Milton

VOLUME 5, ISSUE 12

MARCH, 2003

Water battle continues

BY DONNA DANIELI

Puslinch Council played host to a standing-room-only crowd on Wednesday, February 5th as Nassaw Springs President, Douglas Hatch, made another plea to extend his water-taking operation on Concession 11 in Puslinch. Although the current permit issued by the Ministry of the Environment limits the water taking at Nassaw Springs to 40,000 gallons a day, Mr. Hatch has applied to double that amount to 80,000 gallons a day. Hatch has also purchased the neighbouring property, Rainbow Ranch, and is considering water taking in a similar manner from this land.

Puslinch and Moffat neighbours share the same concerns. Currently the water taken from Nassaw Springs is trucked out on the 15th Sideroad through Moffat to the Guelph Line. The industrial impact of these trucks is not in keeping with the rural, residential neighbourhood. Also of concern is the cumulative effect environmentally: Well water is essential to rural landowners and there is concern for the quantitative effect on the watershed.

Mr. Hatch presented several

proposals to Council. He offered to limit the number of tanker trucks to six daily, he offered to allow his trucks on the roads only between 7:00 a.m. and 7:00 p.m., he offered to reconstruct Concession 11 from the site entrance to County Road 36 by August 2005, and he offered to reimburse Puslinch for any maintenance on Concession 11 prior to August 2005. This he offered in exchange for the re-zoning of his property.

Puslinch resident, Dr. Ralph Southward, asked, "With this informal proposal here today, is Nassaw Springs simply trying to circumvent the formal planning process that would include a proper re-zoning application, and even a public meeting, and instead have Council agree to something in principle?"

Puslinch Council had reservations about accepting the proposal. Councillor Matthew Bulmer expressed concern that the water taking had exceeded limits in the past, and he worried that use of a second site would circumvent the restrictions put in place on the first site. Councillor Mackay echoed this concern, stating bluntly, "Taking from a drought area that is south of

a drought area is really counter-effective. I'm worried about the cumulative effect, and there has to be very good science on that."

Mr. Hatch pointed out that a number of scientific reports have already been done in support of the proposal. "The issue has been fully investigated, documented and will be rigorously monitored by Conservation Halton. There will be no lack of expertise," he insisted. Conservation Halton has given its tentative approval of Hatch's application providing that the flow in the stream never be reduced to lower than seven litres per second so as not to endanger the habitat of the brook trout residing in the stream. "The stream responded quickly to pumping, and we tested it at a variety of litres per second rates," says David Featherstone, a Conservation Halton Ecologist. "At seven litres, the fish were staying put and didn't seem stressed. As well, all of the core elements such as boulders, logs, riffles, and shoreline vegetation were still there and not exposed."

Truck traffic from the site was also a big concern for the Puslinch

continued on page 3

A piece of history well received



PHOTO COURTESY OF DAVID QUAILE

Lou Bradley of Milton and Deb Quaille of Rockwood were recipients of two Milton Heritage Awards on February 22 for their work on *Mrs. Merry's Memories*. The book, released by the Milton Historical Society, details the pioneer life of the Howes family in Drumquin during the late 1800s and early 1900s. Lou Bradley conducted a series of interviews with Amy Howes Merry in the mid-70s which Deb Quaille transcribed, edited, and produced in book format. The MHS also selected the best segments of the original interviews and created a CD to accompany *Mrs. Merry's Memories*.

Inside this Month's Compass

SHOEBOX MEMORIES

George Watson, a well known stonemason, and his sons Milton and Siebert crafted cement blocks in Nassagaweya for silo building in the early 1900s.

page 12



COMMUNITY CORNERSTONE

Over the last two decades Blanche Hinton has been involved with the Public Library Board, the Halton Social Planning Council, Halton Recovery House, and many more events in and around Milton.

page 14



IDLE PURSUITS

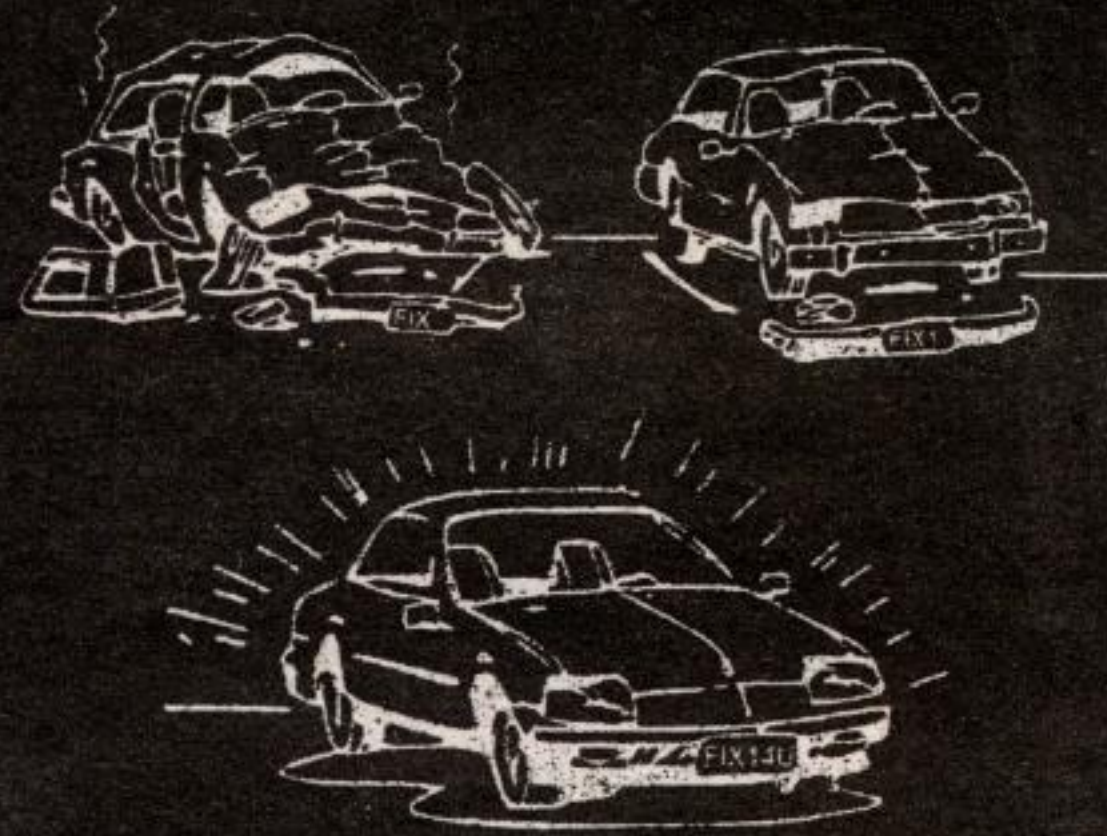
How do you prove to your husband that the man he thinks you're having an affair with is imaginary, especially when he knocks on the door? Theatre in the Trees offers another great comedy and fine dining.

page 19



MILTOWNE COLLISION INC.

"We meet by accident"



We specialize in IMPORTS

751 Main Street East,
Milton
905-878-6919

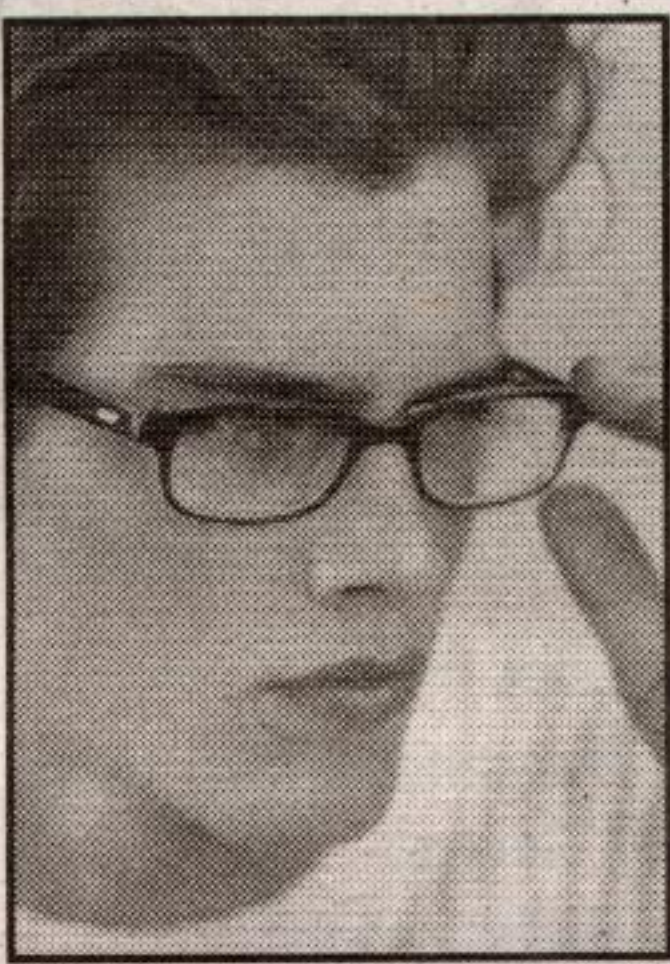
LIFETIME WARRANTY

EYEGASSES, CONTACT LENSES & SUNGLASSES

\$50.00 OFF

on (complete) GLASSES!

* Prescription eye glasses/sunglasses only
EYE EXAMINATIONS ARRANGED



Proudly serving the residents of Halton Hills for the 12th year!

Soft Daily Wear Contact Lenses 2 for \$99.00

Family OPTICAL
873-3050

10:00-9:00 Mon-Fri, 9:30-6:00 Sat, 12:30-5:00 Sun

280 Guelph St., #18
Georgetown Marketplace

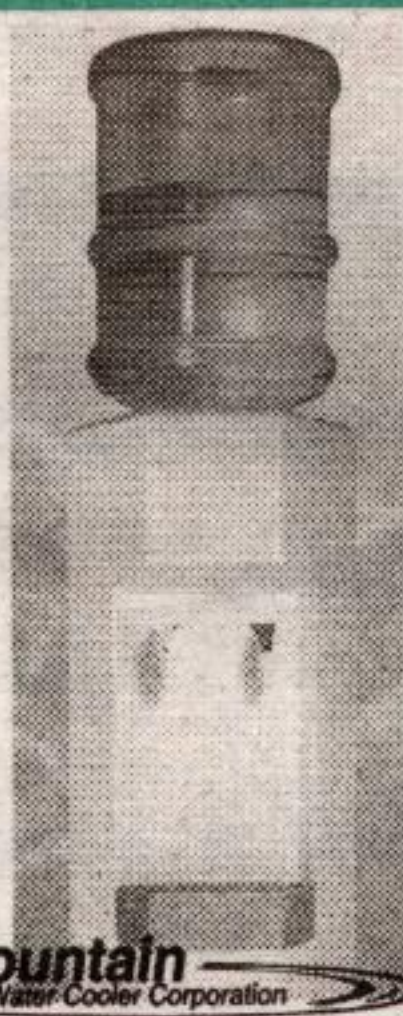


Spring & Distilled Water Cooler Rental Sales & Service

We are proud to bottle natural spring water from one of Ontario's remaining untouched resources. Our water is not chemically treated, it's just good, clean-tasting natural water. Enjoy!

for people who deserve the best!

We deliver throughout Halton
\$7.50/bottle (\$10 deposit)
Hours: Mon-Fri 8-5, Sat 8-12



723 Main St. E., Milton 905-876-1991
Fax 905-876-4846 email classic.coolers@stn.net

Crystal Mountain Water Cooler Corporation

storage solutions

9144 Twiss Road, Campbellville, Ontario. L0P 1B0
Phone 905-854-1008 Fax 905-854-2707

Rates as low as \$75/month, video surveillance, fully fenced facility, electronic card access, 24 hour access, only you have the key, computerized gate system, security lighting, and ground level units!