



- Auto Upholstery • Sunroofs
- Windshields • Truck Caps & Lids
- Tonneau Covers • Boxliners
- Step Bars - Black, Chrome & Stainless
- Grill Inserts - Stainless

781 Main Street, Units 1 & 2
Milton
905-876-4785

Heart and Stroke Foundation of Ontario

Halton Region Office
4190 Fairview Street, Unit B-9, Burlington, ON, L7L 4Y9
Tel. (905) 634-7732 Fax. (905) 634-1353
Visit us on the web at: www.heartandstroke.ca

Heart & Stroke Foundation is 50 Years Young

For the Heart and Stroke Foundation, the past year was filled with unique challenges and unprecedented successes. And, to cap it all, we turned 50.

This occasion marked five decades of Ontario communities banding together to support the Foundation's quest to protect the health of millions at risk. Over these decades, the Foundation has contributed \$430 million to medical research to generate new knowledge and new treatments.

The year 2002 saw a difficult economy. But, the Foundation managed to generate solid net annual revenues generating \$66.3 million. Our 33,000 strong community volunteer base made a superlative contribution. Programs such as Jump Rope for Heart and our new addition, Hoops for Heart, together grew by 11.8%.

The Foundation has expanded its ability to reach hundreds of thou-

sands of people. To take one example, the Foundation's newest website initiative, Women: Heart Disease & Stroke at: www.heartandstroke.ca/

women was launched to empower women to take better care of their own health. Nine new Ontario regional stroke centres, and seven district stroke centres were established, in partnership with the Ministry of Health and Long-Term Care. Our strategy for delivering integrated stroke care centres, ensuring that stroke patients get to the right hospital in the right time, is well underway.

On the research front, the Foundation funded 250 investigative teams situated in universities, teaching hospitals and research institutes across Ontario.

Our long-standing partnership with the public, who so generously give of their time and their dollars, remains paramount. The tremendous commitment of our volunteers, in partnership with our staff, allowed us to weather a challenging year, and move forward in so many ways.

To you all - a heartfelt thanks.

New treatments give heart patients

new leases on life...



because you support the Heart and Stroke Foundation

HEART AND STROKE FOUNDATION

All you need to maintain a healthy heart!

- Heart Monitors (Polar, Vetta, & Cat Eye) from \$89.99
- X-country & Downhill ski equipment
- Bikes
- Indoor trainers

Store Hours:
Mon - Fri 9-9
Saturday 9-6
Sunday 12-6



89 Ontario St. N.
Milton
(905) 876-7676
www.spokesnslopes.com

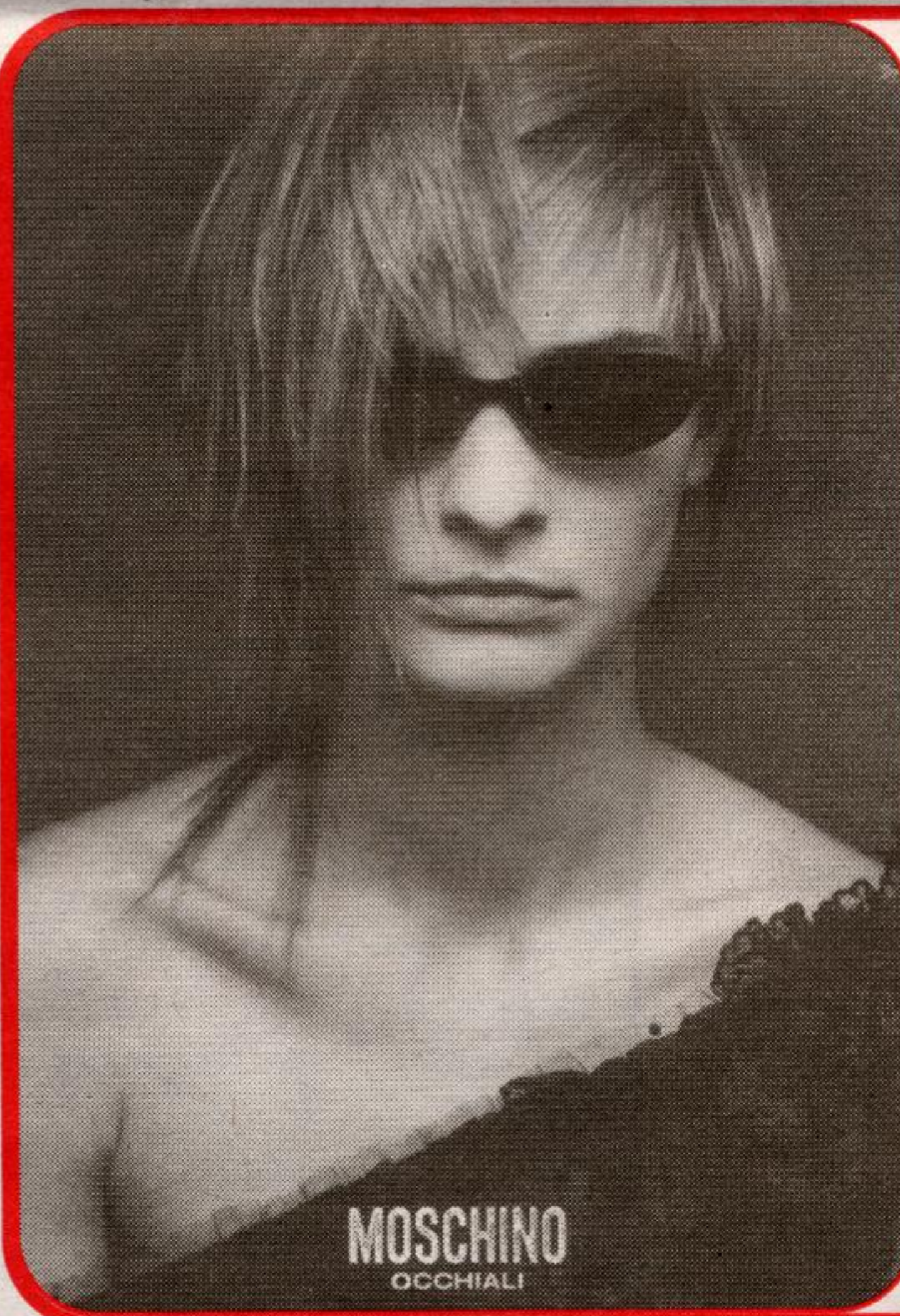
Get up and go to . . .



A Tradition of Value & Trust since 1967

Visit us at www.gallingerford.com

655 Main St. E., Milton 905-875-FORD



MILTON OPTICAL

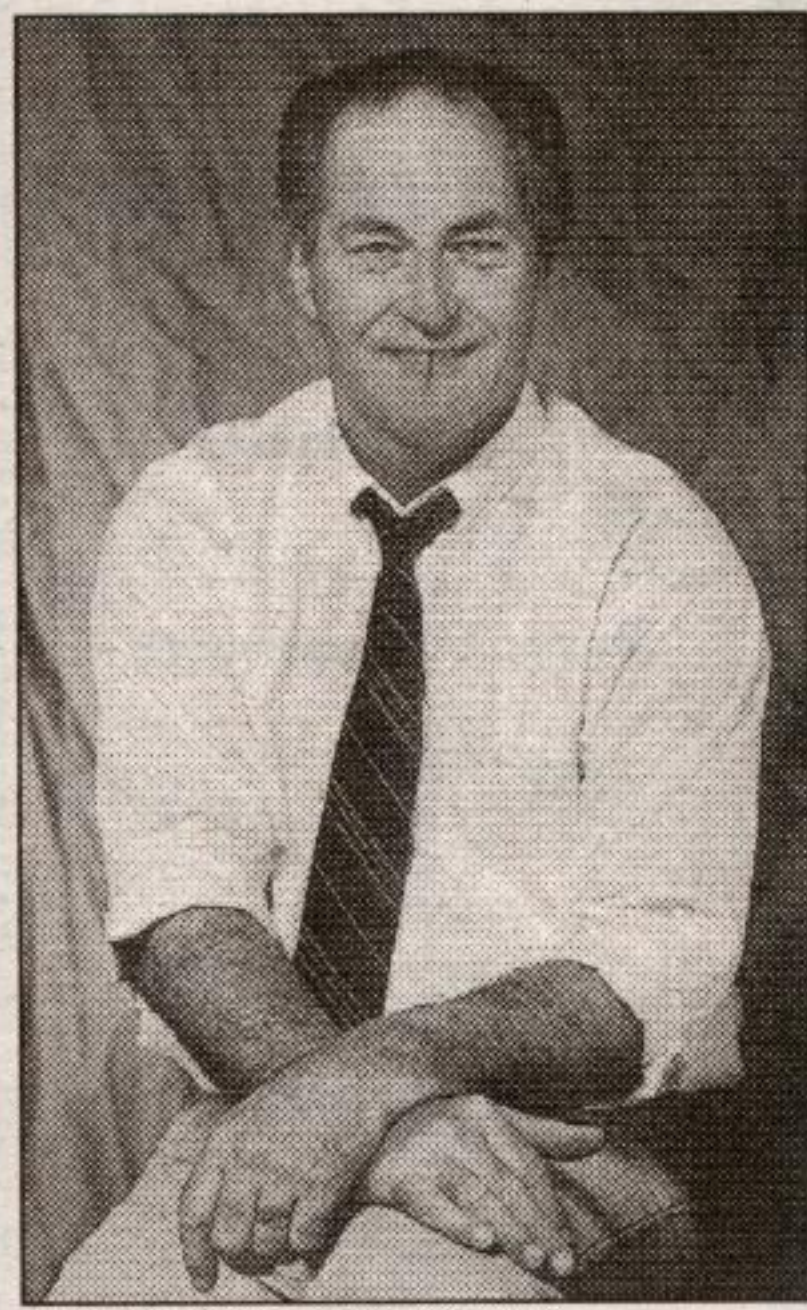
- Eye Exams Arranged (next door)
- Lab on premises
- Certified Contact Lens Fitter

15 Martin Street,
Milton

(Carriage Square)
Martin & Main Sts.

905-876-0556

Thank you to all volunteers and groups throughout Halton supporting the Heart & Stroke Foundation



**Ted Chudleigh,
MPP Halton**



CONSTITUENCY OFFICE

192 Main St., Suite 100,
Milton, ON L9T 1N8

Tel. (905) 878-1729, Fax (905) 878-5144

email: ted_chudleigh@ontla.ola.org

Leathertown LUMBER

264 MAIN STREET N. ACTON
519-853-1970 TOR. 416-601-1259
FAX: 519-853-2542
Mon. - Fri. 7 am - 6 pm
Saturday 8 am - 4 pm



ROXUL INSULATION FROM \$19.89 PER BUNDLE	WEATHERSHIELD ATTIC & WALL BLOW IN INSULATION \$14.99 BDL.	4' X 8' PANELLING Lightwood Pecan or Glacier Oak \$11.99 each	TARPS for winter protection up to 30' by 50' \$24.99 BDL.	Knotty Cedar Interior Plank Panelling 8' lengths Coverage 14 sq. ft. \$24.99 BDL.
CRAFTERS PLYWOOD BALTIC BIRCH 5'X5'X1/8" \$18.99 ea. 5'x5'x1/4" \$24.99 ea. 5'x5'x1/2" \$39.99 ea.	MDF WHITE SHELVING Finished Bullnose Edge 12" x 8' 16" x 8' each	Various Saw Blades Available 7-7-1/4" \$7.99 with exchange \$14.99 without exchange See store for details	Lodge Pole Pine Plank PANELLING \$6.99 bdl. 14 sq. ft.	1X3X24" CLEAR PINE \$5.99 10 PC. BUNDLE
WOODEN SNOW FENCE 50' \$36.99 roll	Ice Rink POLY 24' x 100' \$49.99 roll	We stock SICO the largest paint manufacturer in Canada. Choose from 4,000 colours!	Builder's Select Drywall Primer \$12.99 3.78 L	