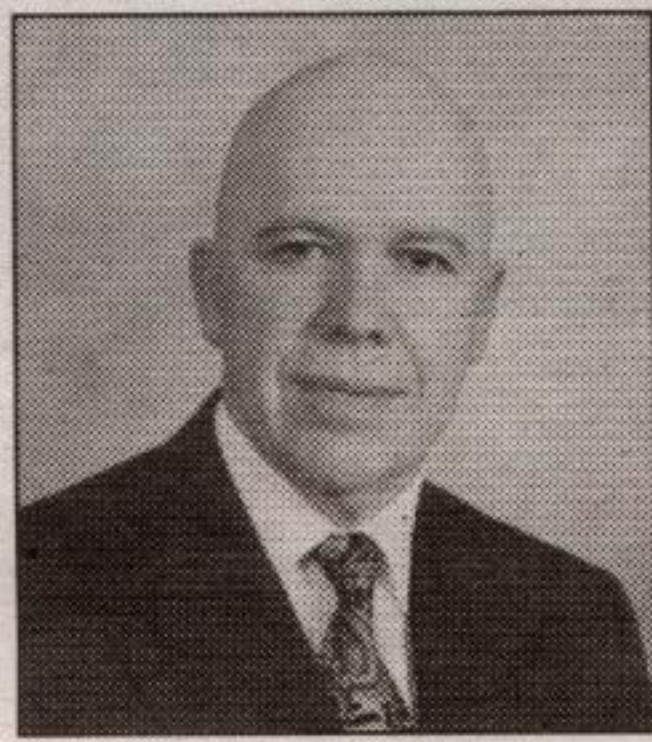


We look at the whole picture.

Protect your family tree.

We offer comprehensive insurance and estate planning for you and your family.



Lou Mulligan,
CFP, RHU

MONEY CONCEPTS



420 Main Street East,
Milton
905-876-0940

Money Concepts Group Capital Corp. and National Financial Insurance Agency Inc.

• Pioneers in practical, energy-efficient housing

• Small-scale company providing constant on-site supervision and personal interaction with clients

• Uniquely crafted homes, additions and renovations

• Extreme care taken in choice of building material for quality and chemical composition

• Barrier-free access and attention to other special needs is 'our standard'

"We believe we build the most efficient and comfortable homes in Ontario."

BRADEN HOMES LTD

(519) 856-9306

Fax:
(519) 856-9611

Rockwood,
Ontario

Visit us at our new web site!

www.bradenhomes.ca



Locker Family Farmhouse

~ circa 1915 ~

(Back) John & Margaret Locker; (children left to right) Mary, Laura, baby Melvin, Florence, Myrtle, Oscar.



Four Generations

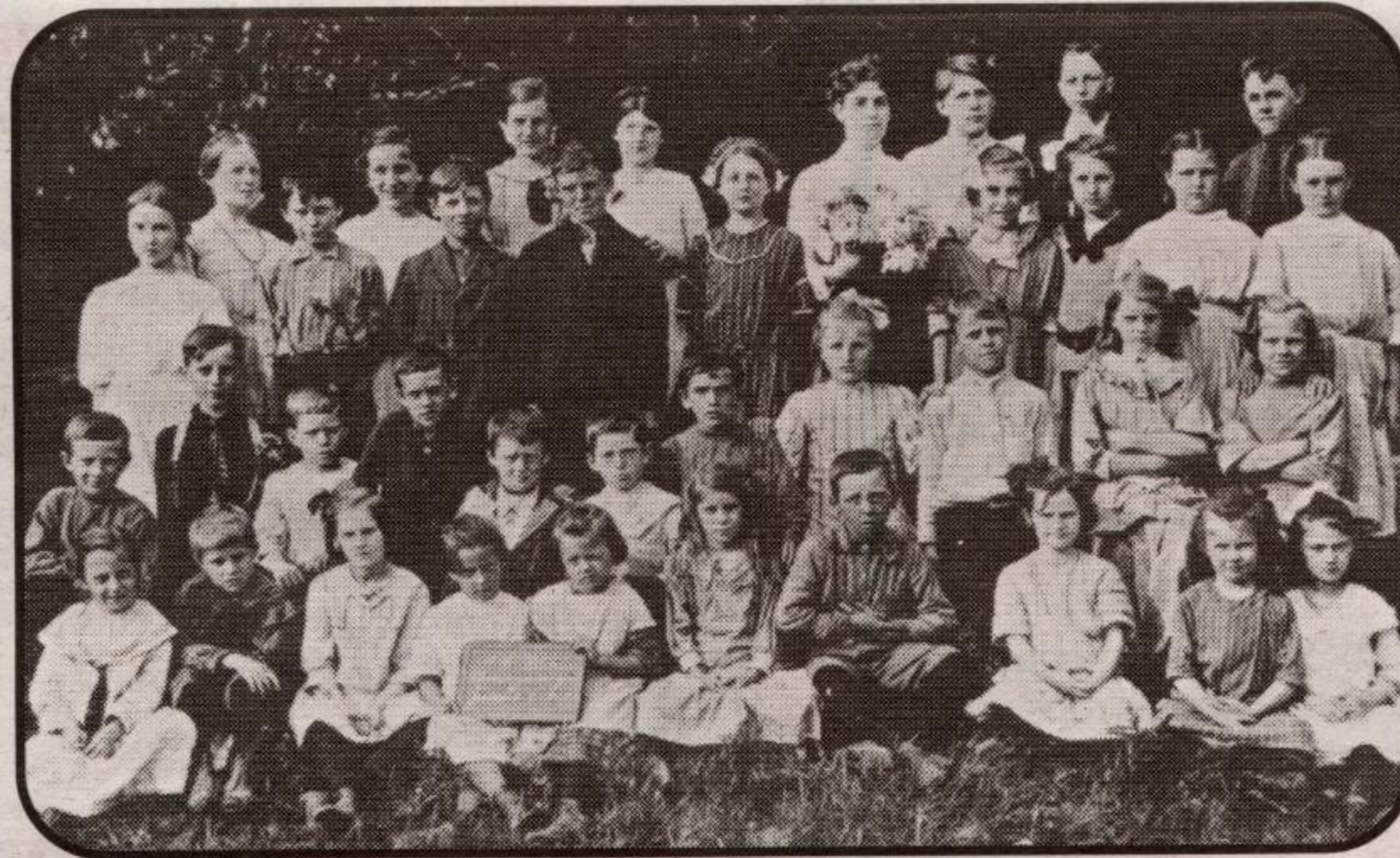
~ circa 1900~

L to R:
Grandma Atkins, John Locker, Margaret Locker, Oscar Locker



Oscar Locker

~ 1938 ~



SS#4 Nassagaweya, June 27, 1913

L. to R., Back Row - Annie Anderson, Mary Locker, Belle Laing, Myrtle Pickett, Pearl Sommerville (teacher), Art Norrish, Arnold Marshall, Harold Boles. Third Row: Mary Moffat, Roy Marshall, Arthur Adamson, Bill Laing, Myrtle Richardson, Laura Locker, Erma Fletcher, Mildred Norrish, Mary Cargill. Second Row: Jim Moffat, Mansell Taylor, Bob Anderson, Andrew Laing, John Cargill, Clare Pickett, Elwin Locker, Jennie Locker, Stan Norrish, Minnie Land, Florence Locker. Front Row: Vivia Jefferson, Alex Land, Mildred Fletcher, Edith Norrish, Annie Easterbrook, Maude Land, George Easterbrook, Elva Taylor, Flora Moffat, Edith Adamson.



Three Locker sisters with cousin Mary Cheney, Vera Forbes, Laura Early, Myrtle Lowrie

~ 1960 ~

Shoebox



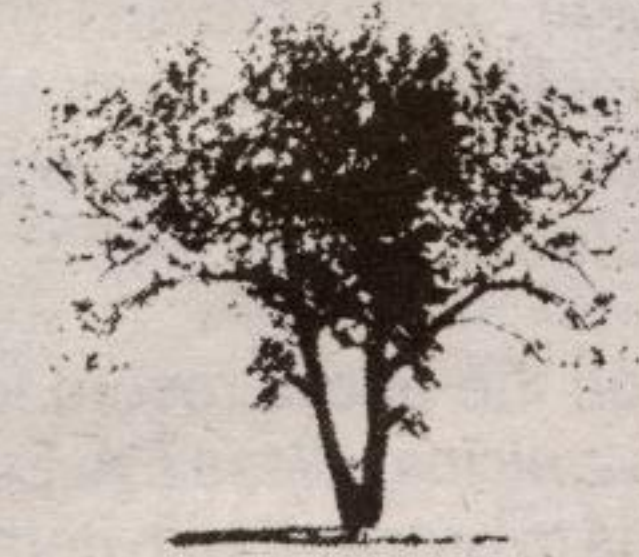
John Locker was born in 1794, and his wife Mary Gordon was born in 1795. They were married in about 1833. They probably emigrated from Ireland sometime in the 1850s with their four children: Thomas, Elicia, Grace Boyd (an adopted half-sister), and Samuel.

In 1854 John was granted land from the Crown, a Clergy Sale of 100 acres from the Province of Canada for 62 pounds, 10 shillings. The land was located on the north east half of Lot 25, Conc. 3, Nassagaweya, Halton County (25 Sideroad and Guelph Line). John farmed for six years and left the farm to his eldest son Thomas, who lived with his mother Mary, Grace Boyd and Samuel. Mary Elicia had married Alexander Marshall. John made his out his will leaving on September 1, 1859, and died 1860. The farm was left to his son Thomas, a cow to his daughter Elicia, and to Samuel Lot 3 1/2, Conc. 2 if he remained and laboured with Thomas until he attained legal age of 21 years. To Grace Boyd, his adopted daughter, he willed comfortable maintenance on condition she made herself generally useful as health and strength permitted. If she married she was entitled to one cow and six sheep. To his wife Mary he willed a comfortable house, bed and board with his son Thomas.

Thomas Locker took over the farm in 1860. He had been born in 1835, and married Jane Gordon, born in 1833, in approximately 1850. They had sons William, George, John and David. Thomas was said to be a very strong and hard-working farmer; he moved many incredibly large stones into the fence rows himself. His son John was not so ambitious with the farm and was a rather poor manager. In 1872 when John was 11 years of age, his father planted maple trees along the lane and roadway to celebrate Queen Victoria's 35th anniversary upon the throne. Thomas made out his will in February 1898, leaving the farm to son John. To his wife Jane he bequeathed the apartments in the house occupied by her during her natural life, and to son David the "bed and bedding he now occupies."

John received the farm in 1915, and it was legally probated in March 1922. John married Margaret Ann Atkins in 1893, and they were blessed with seven children, six of whom survived (one died in infancy): Oscar, Myrtle, Mary, Laura, Florence, and Melvin. They attended Ebenezer Methodist

John Locker
b. 1794, d. 1860



Locker Family Tree

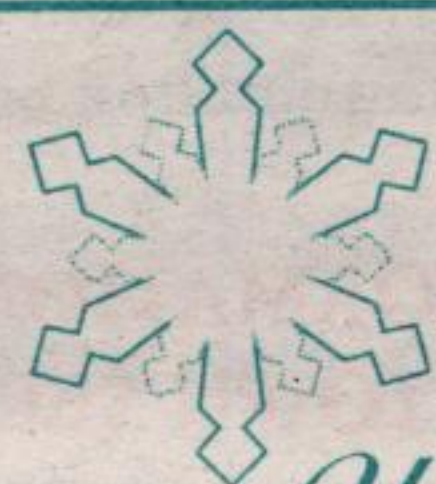
Mary Gordon
b. 1795, d. 1892

Thomas Locker
b. 1835, d. 1915
m. Jane Gordon
b. 1833, D. 1906
Mary Elicia Locker
m. Alexander Marshall
Grace Boyd
(1/2 sister, adopted)
Samuel Locker

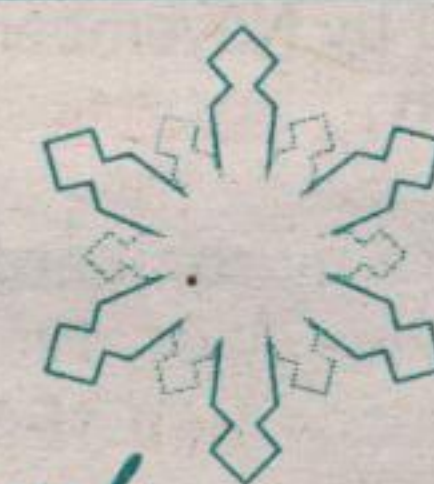
William Locker
George Locker
John Locker
b. 1861, d. ...
m. Mary ...
b. 1869,
David Locker



Partial direct line for Lot 25, Conc. 3 Nassagaweya. Photo information courtesy of Jean Early. Compiled by De...



MY SISTER'S CLOSET



Your first choice for second debut fashions!

Come in and see our gorgeous FALL FASHIONS including Holiday wear and Maternity. Give us a call to bring in your high quality/designer clothes.

26B Main Street East, Milton (905) 875-0232

