

# La Leche League in North Halton



# Halton 4-H Achievement Days at the Fairs

Photos by BRENDA MATHIES

Mothers who wish to breastfeed their babies will find encouragement and information at the local La Leche League groups in the area. Whether you nurse for 6 days, 6 weeks or 6 months, La Leche League meetings are informative and supportive.

The League offers mother-to-mother help at its monthly meetings. The informal meeting discussions on different phases of breastfeeding include the latest medical research, as well as personal experience. Other services include a lending library of books on childbirth, childcare, breastfeeding and nutrition.

Nursing mothers and their babies, as well as moms-to-be are welcome. Many mothers have found that it is beneficial to attend meetings while pregnant to gain information, confidence and a support network before the baby is born.

Two La Leche League groups currently meet in the North Halton area. The Acton/Georgetown group meets on the 2nd Wednesday of the month at 7:30 p.m. in homes in the area. For further information and location for the current series of meetings, call 905-702-8675 or 905-873-8023. The Milton group meets on the 3rd Wednesday of the month and the Milton Community Resource Centre (Ontario Early Years Centre) at 917 Nipissing Rd. (corner of Nipissing and Thompson Rd, just south of the railway crossing). For further information, call 905-876-3322.



Naomi Lutes (Reserve Showmanship) & Norm Richardson (Champion Showmanship)

## Halton 4-H Rabbit Achievement Program

September 7, 2002 at Georgetown Fair



Troy Nurse



'97 FORD F150 XLS

- Red / mint condition
- Ext. cab / auto
- Air / stereo
- 1 yr. warranty
- Certified

\$15,900

- Red / club wagon
- 8 cyl. / 110,000 km
- auto / air
- Stereo / cruise / tilt
- 1 yr. warranty / certified

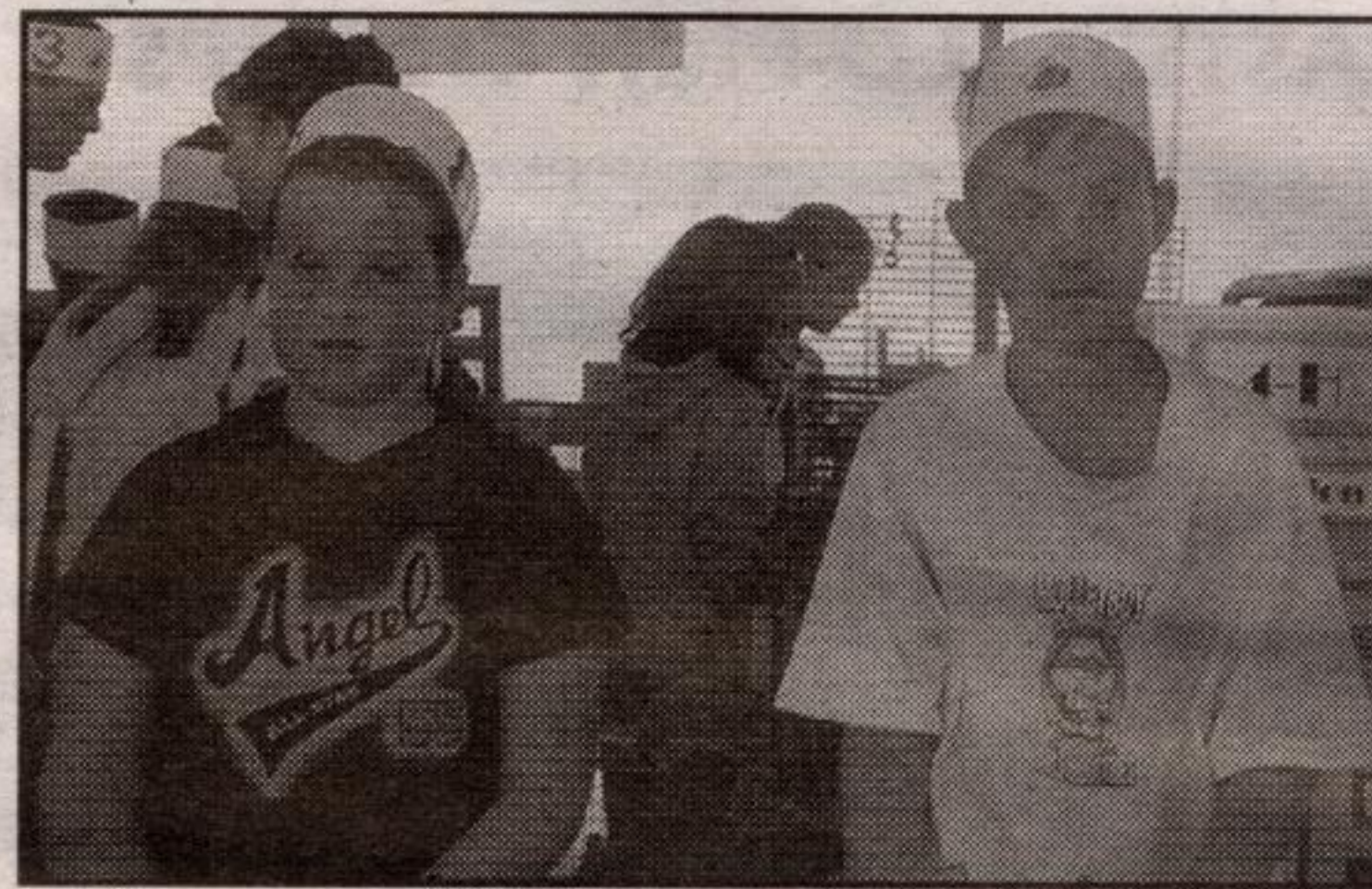


\$9,895

You pay less ... when you buy from Sless!

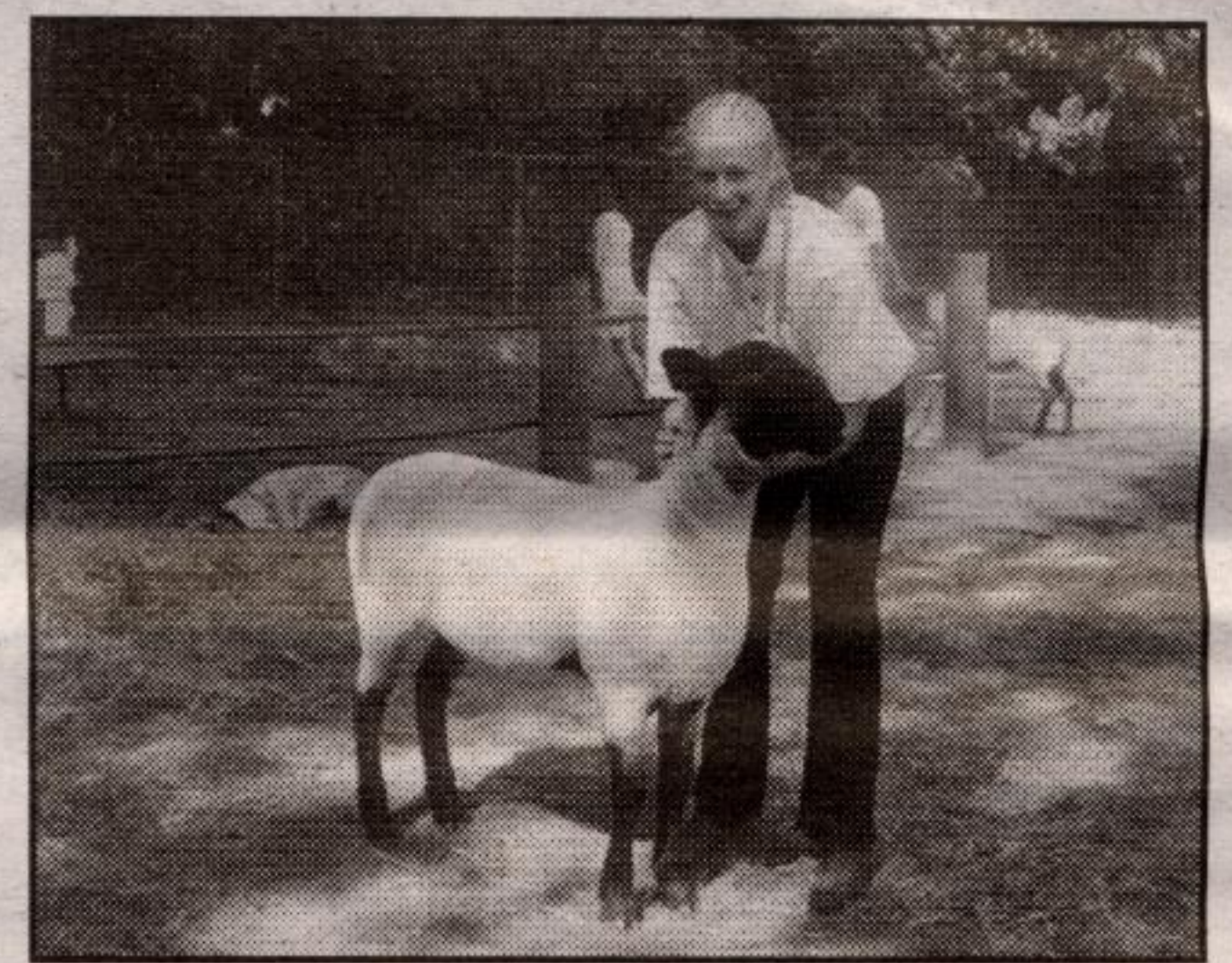
**slessor** 388 Main Street, Milton 905-878-1797

Katelyn Donaldson (Reserve Conformation) & Blake Comden (Champion Conformation)

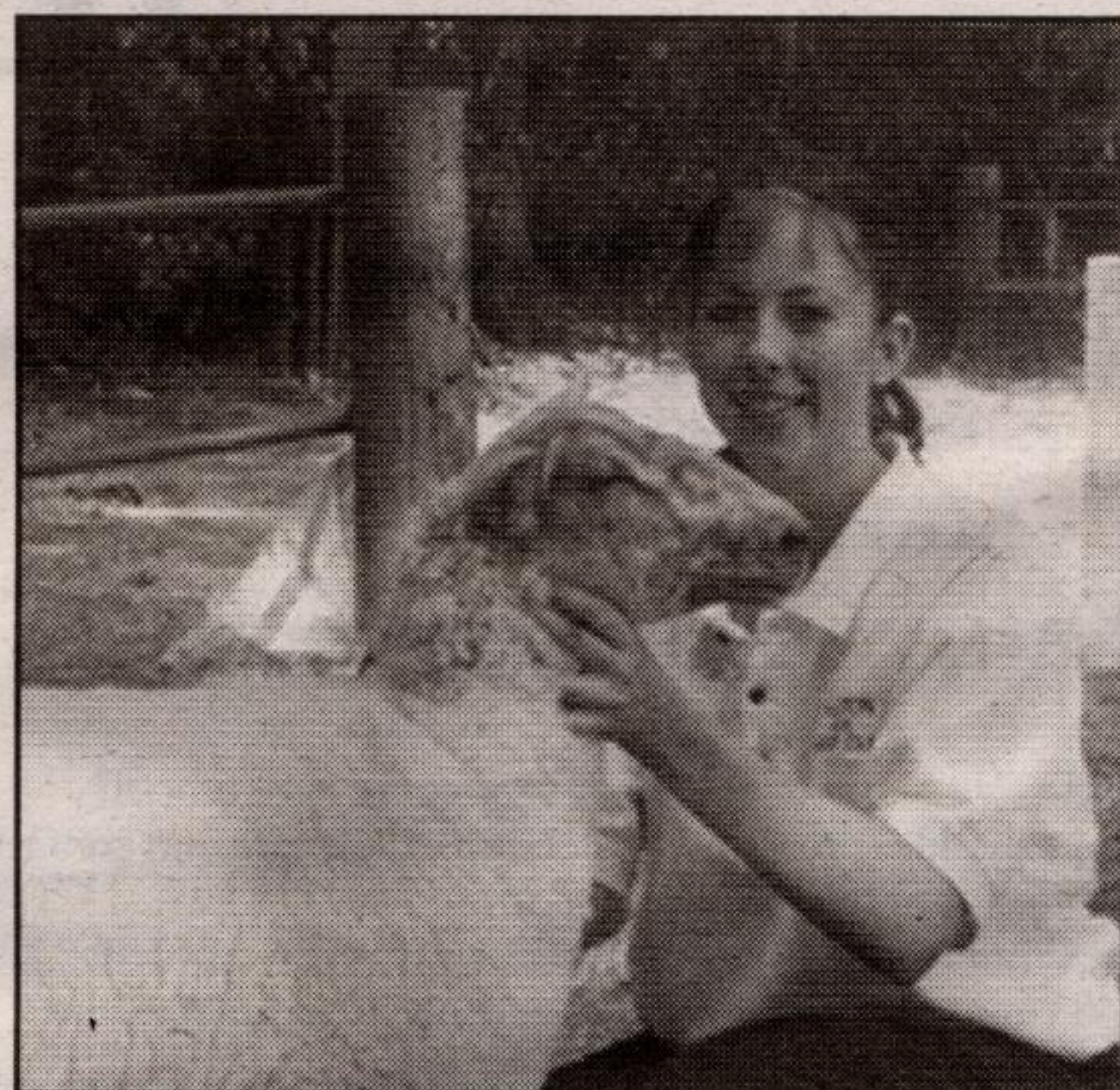


## Halton 4-H Sheep Achievement Program

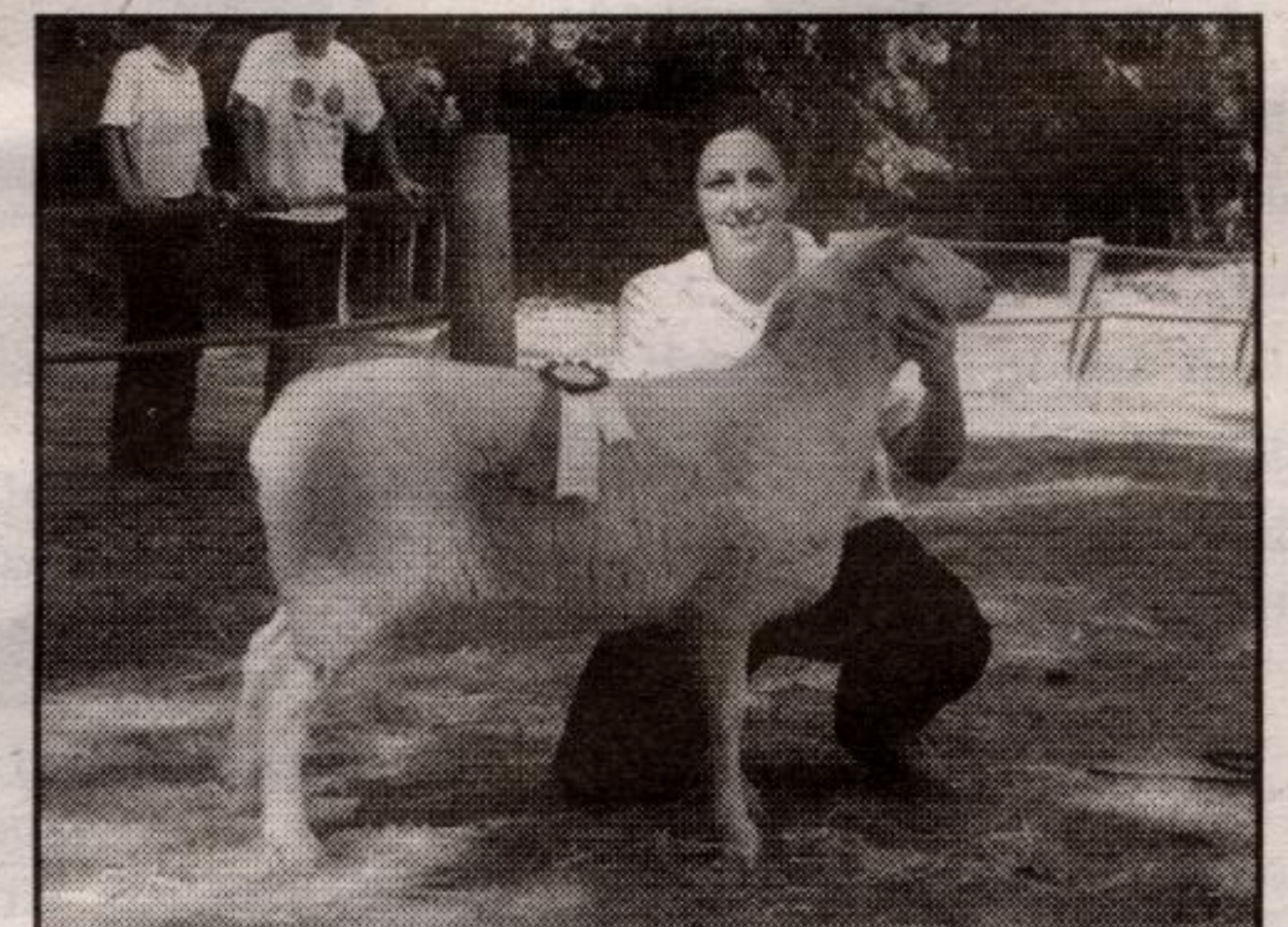
September 8, 2002 at Georgetown Fair



Cristy Nurse (Champion Showmanship)



Jessica Lutes (Reserve Showmanship & Reserve Conformation)



Naomi Lutes (Champion Conformation)

## Halton 4-H Family Fun Day August 25, 2002 Percy W. Merry School



The events of the 2002 Halton 4-H Family Fun Day was fun for all: Penny Patterson (volunteer), David Gooding (member) and Valarie Wood (pre-member).

4-H pictures sponsored by ...

Ted Chudleigh, M.P.P. - Halton

Constituency Office:  
192 Main St., Suite 100  
Milton, ON L9T 1N8

Tel. (905) 878-1729  
Fax (905) 878-5144

email: ted\_chudleigh@ontla.ola.org



Ontario

## Leathertown LUMBER

While Supplies Last!

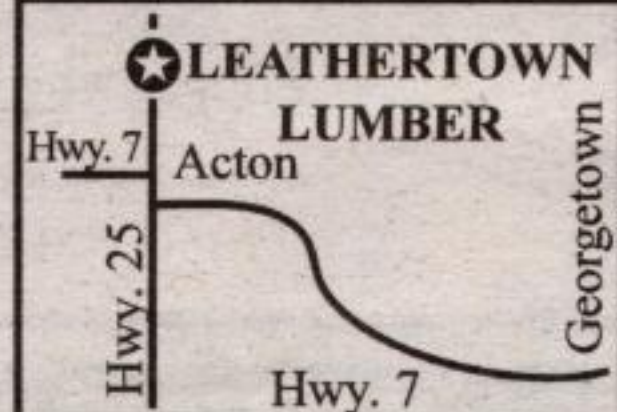
Family owned and operated ~ Serving the Halton area since 1992

264 MAIN STREET N. ACTON

519-853-1970 FAX: 519-853-2542

Mon. - Fri. 7 am - 6 pm

Saturday 8 am - 4 pm



### In-store Inventory Specials!

#### SUPER SPECIALS ON PRESSURE

#### TREATED LUMBER - CASH & CARRY ONLY

4X4X10 P.T. ....	\$10.25
2X4X8 P.T. ....	\$4.49
2X4 LATTICE CHANNEL .....	\$5.59
1X6X5 P.T. ....	\$1.99
1X6X6 P.T. ....	\$2.39
1X8 PRIVACY PLUS LATTICE .....	\$4.19

**ROXUL INSULATION**

FROM

**\$19.89**

PER BUNDLE

**4' X 8' PANELLING**

Lightwood Pecan

**\$11.99**

each

**LODGE POLE PINE PANELLING**

Coverage 14 sq. ft.

**\$6.99**

each

**EXCELLENT PRICES ON A LARGE SELECTION OF TARPS**