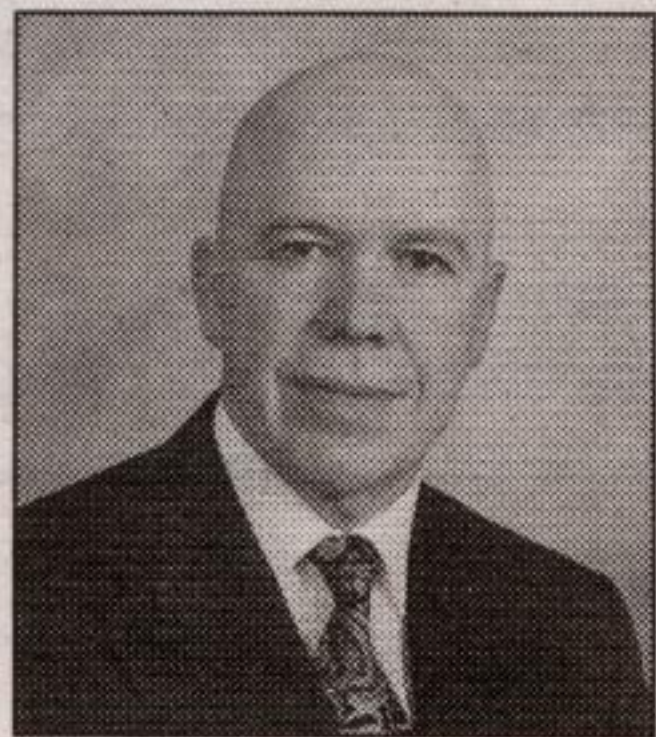


**We look at the whole picture.**

**Protect your family tree.**

We offer comprehensive insurance and estate planning for you and your family.



**Lou Mulligan,**  
CFP, RHU

**MONEY CONCEPTS**



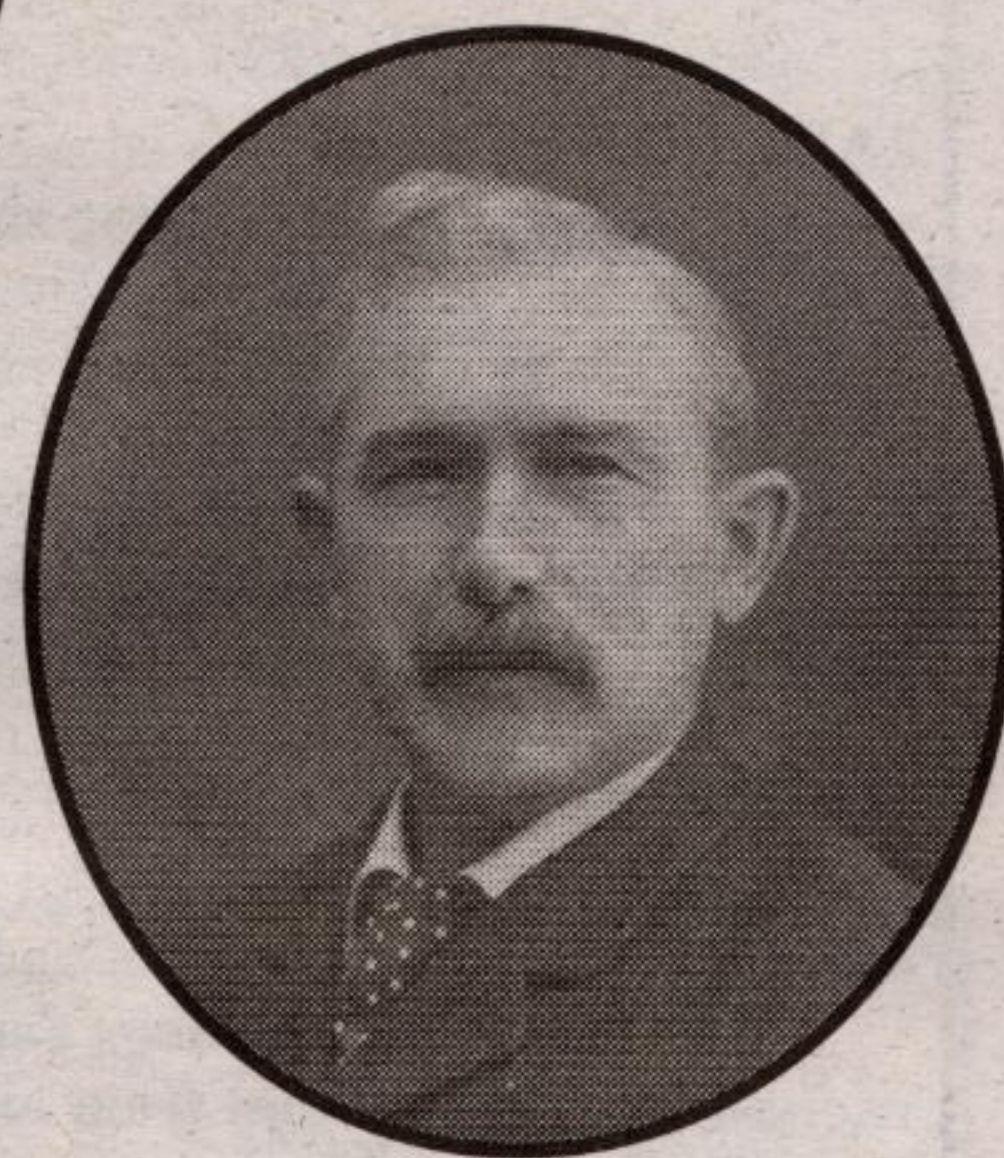
420 Main Street East,  
Milton  
905-876-0940

Money Concepts Group Capital Corp. and National Financial Insurance Agency Inc.



**William Grant & Elizabeth (Lizzie) Ryder Grant**

~ circa 1858 ~



**William Grant**

~ circa 1890 ~



**Martha Ann (née Grant) & Thomas Alexander Wheeler**

~ 1900 ~



**Nell, Martha & Mary Grant**  
(nicknamed Faith, Hope & Charity)

~ circa 1898 ~



**Martha (Grant) & Edna Mae Wheeler, Ellen (Nell Grant) & Arthur Taylor**

~ 1904 ~



**Family Gathering 1910**

L to R, end & back of table: (Woman & child unknown), Edna Wheeler, ?, ?, Mary (Taylor) Grant, Lizzie Grant. L to R, front of table: Thomas Ralph, Martha (nee Grant), Wilma, Alma Grant, William Grant.

# Shoebox



William Grant was born July 5, 1828, in Maxville, Glengarry County Ontario, the son of Alexander and Mary Sutherland, both born in Inverary, Scotland, and buried in Glengarry county, Lancaster Township at the Old Cemetery by the lake. William settled in Acton and married Elizabeth (Lizzie) Ryder on February 11, 1858, in Trafalgar. She was the daughter of Henry Ryder (1801-1875) and Mary Butler (1810-1882) who were both born in Lancashire, England, and are buried in Churchville Cemetery, Halton Hills. Henry farmed the homestead on Third Line, Acton at the foot of Swackhammer's Hill.

William and Lizzie had four boys and five girls. When the first son was born John Burns happened into William's wagon shop for some repairs. He congratulated William and said, "I'll do better than that if you name the lad after me. I'll deed him two of the best lots I have surveyed off my farm fronting on Main Street near Ransom Street." So it came to pass the baby was christened Henry Alma Burns Grant. The deed was made out and duly registered at the County Registry Office in Milton. For many years the Grants had a fine garden on these lots. When Alma moved to Avonbank in the 1880s the lots were sold. John R. Watson built the first house on the properties.

William had his carriage and wagon, woodworking and paint shop business at various locations in Acton. One location was at Main and Bowe Avenue. Emanuel Chapman lived next to it and had a blacksmith shop. He was followed by James Waldie, also a blacksmith. In the rear was the Grant shop where carriages, wagons and sleighs were built and Jim Waldie ironed them off. Jim's good friend John Wallace relocated to Milton and opened The Wallace Hotel at the top of Main Street. Jim decided to follow and opened a blacksmith shop on James Street (the newly renovated Waldie Blacksmith shop). William Grant moved into Jim's house and took over the blacksmith business to go along with his wagon business. In about 1872 he had another property on the corner of John and Mill Streets where his shop faced the John Street frontage. In 1874 this property was sold to Robert

• Pioneers in practical, energy-efficient housing

• Small-scale company providing constant on-site supervision and personal interaction with clients

• Uniquely crafted homes, additions and renovations

• Extreme care taken in choice of building material for quality and chemical composition

• Barrier-free access and attention to other special needs is 'our standard'

"We believe we build the most efficient and comfortable homes in Ontario."

**BRADEN HOMES LTD**

(519) 856-9306

Fax:  
(519) 856-9611  
Rockwood,  
Ontario

Visit us at our new web site!  
[www.bradenhomes.ca](http://www.bradenhomes.ca)

William Grant  
b. 1828, d. 1917



## Grant Family Tree

Elizabeth Ryder  
b. 1814, d. 1887

Henry Alma  
b. 1859, d. 1935  
m. Mary Taylor

Alexander  
b. 1861, d. 1971

Sarah Jane  
b. 1862, d. 1896

m. William Swindlehurst

Henrietta  
b. 1865, d. 1871

George  
b. 1866, d. 1919

m1. Mary Czerwinski  
m2. Lottie Fairles

Mary  
b. 1868, d. 1946

m. Frank Czerwinski

Charles  
b. 1872, d. 1951

m. Ellen Stewart

Ellen (Nell)  
b. 1875, d. 1952

m1. Charles Taylor  
m2. John Gillies

Martha  
b. 1877, d. 1980

m. Thomas A. Wheeler

Bessie  
b. 1885, d.

Margaret  
b. 1886, d.

m. Hug

Albert  
b. 1888, d.

m. Jean

George  
b. 1891, d.

m. Evel

Nellie  
b. 1894, d.

m. And

Wilfrid  
b. 1895, d.

Clara  
b. 1897, d.

Flora  
b. 1898, d.

**Country Depot Garden Centre**

## Fall Gardening

- Fall Mums • Statuaries
- Flowering Kale • Giftware
- Indoor Tropicals

Where great gardens get their start!



Store Hours  
Mon-Fri 8-6 Saturday 8-5

28 BRONTE ST. N. MILTON

(905) 878-2391



SISTER

Your first choice for

Come in and see our  
Give us a call to bring in your

26B Main Street East