



Timberwolf Tree Care and Consulting
905-336-5979



- Pruning • Cabling • Removals • Stumping
- Plant Health Care Testing
- Monitoring Programs • Risk Assessments
- Environmentally Friendly Insect and Disease Control

Using only the latest technology and scientific advancements to care for your trees

Fully Insured, Free Estimates ~ ISA Certified Arborist #ON-0715

Artistic Frame

- Fine Custom Picture Framing
- Giftware
- Original Art

17 Wilson Drive, Unit 4, Milton 905-693-0276

Hours: Mon to Fri 10-6, Sat 10-5



'97 NISSAN
EXT CAB

- Auto
- Air
- 96,000 km
- Previous info on request
- Like new, 2 yr. warranty

\$12,900

'95 GMC SONOMA
EXT CAB

- V 6 auto • Auto Locks & Windows • Box liner & cover • 2 tone maroon/silver • Immaculate • 130,000 km • 6 months Warranty



\$9,995

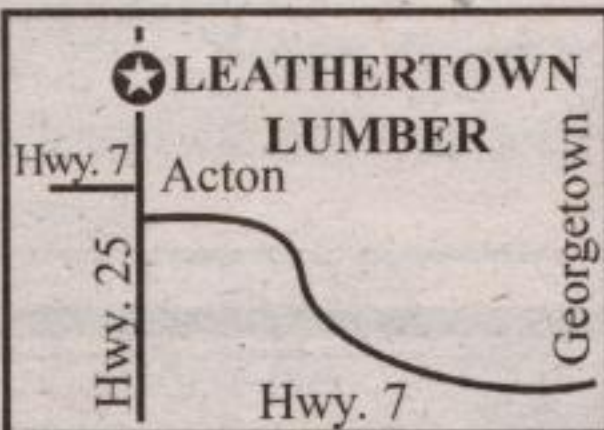
You pay less ... when you buy from Sless!

slessor 388 Main Street, Milton 905-878-1797

Leathertown LUMBER

Family owned and operated ~ Serving the Halton area since 1992

264 MAIN STREET N. ACTON
519-853-1970 FAX: 519-853-2542
Mon. - Fri. 7 am - 6 pm
Saturday 8 am - 4 pm



For your
pressure
treated
lumber

WE STOCK A FULL LINE OF PLUMBING & ELECTRICAL SUPPLIES

ROUGH OAK FENCING

PRESSURE TREATED
ROUND POSTS

WE STOCK THE BEST
CEDAR AVAILABLE
IN LENGTHS TO 18'

ROUGH PINE

Great for Board & Batten
1 x 12 **89¢** lin. ft.

CRAFTERS PLYWOOD BALTIC BIRCH

5'x5'x1/8" \$18.99 ea.
5'x5'x1/4" \$24.99 ea.
5'x5'x1/2" \$39.99 ea.

Check out our **SPECIALS** on
HOBBY PINE

1 x 8 **65¢** ft.
1 x 12 **95¢** ft.

We stock
SICO
Formula 77
\$26.99/3.78L

Windsor Water Softener Salt
Select Plus \$4.99/20 kg \$7.99/40 kg
Crystal II \$5.99/20 kg \$10.49/40 kg
cash & carry only

PRESSURE TREATED CHAMFERED
6 x 6 x 8'
\$14⁹⁹

Pre-inventory in-store specials!



Halton 4-H Achievement Days

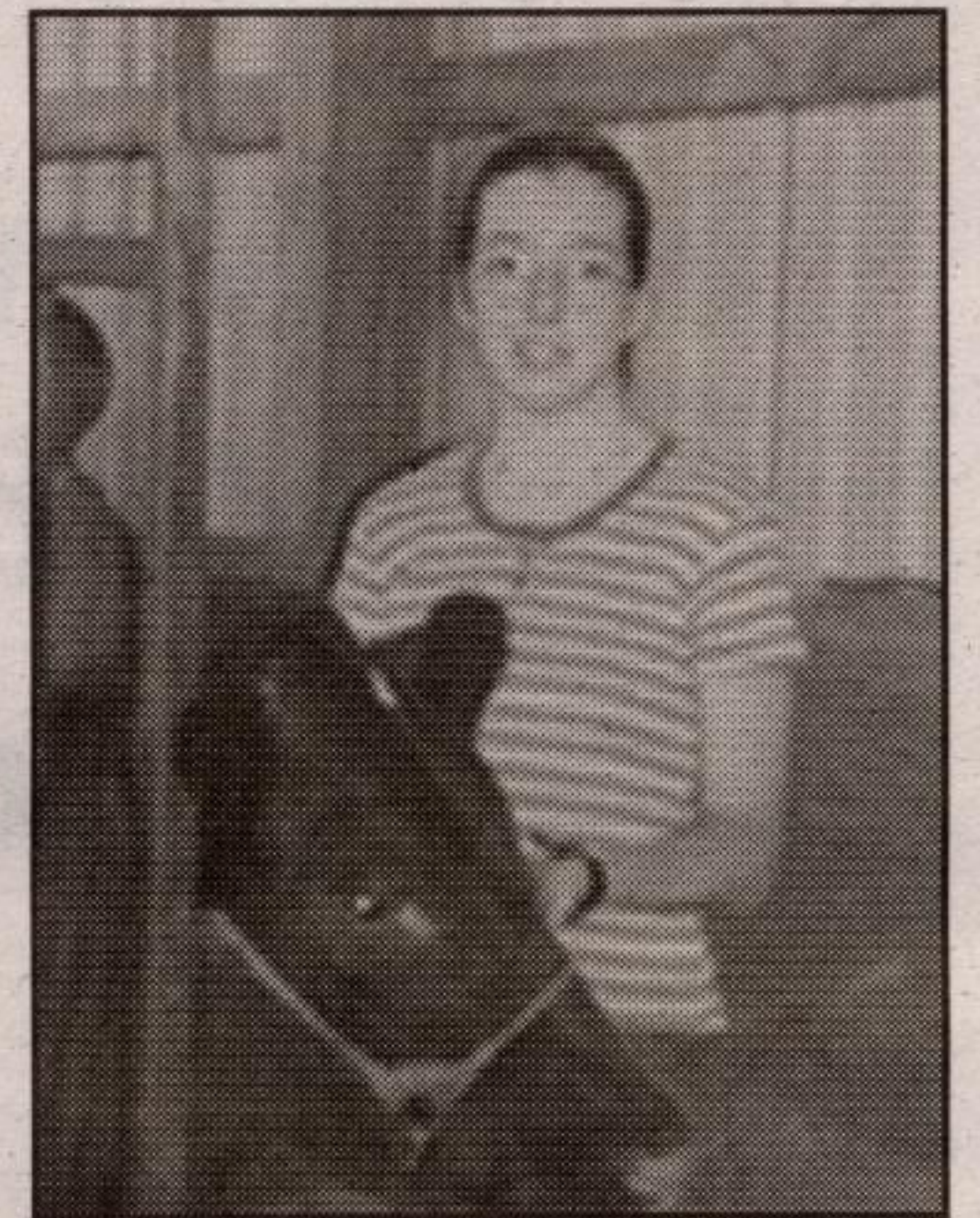
Photos by BRENDA MATHIES



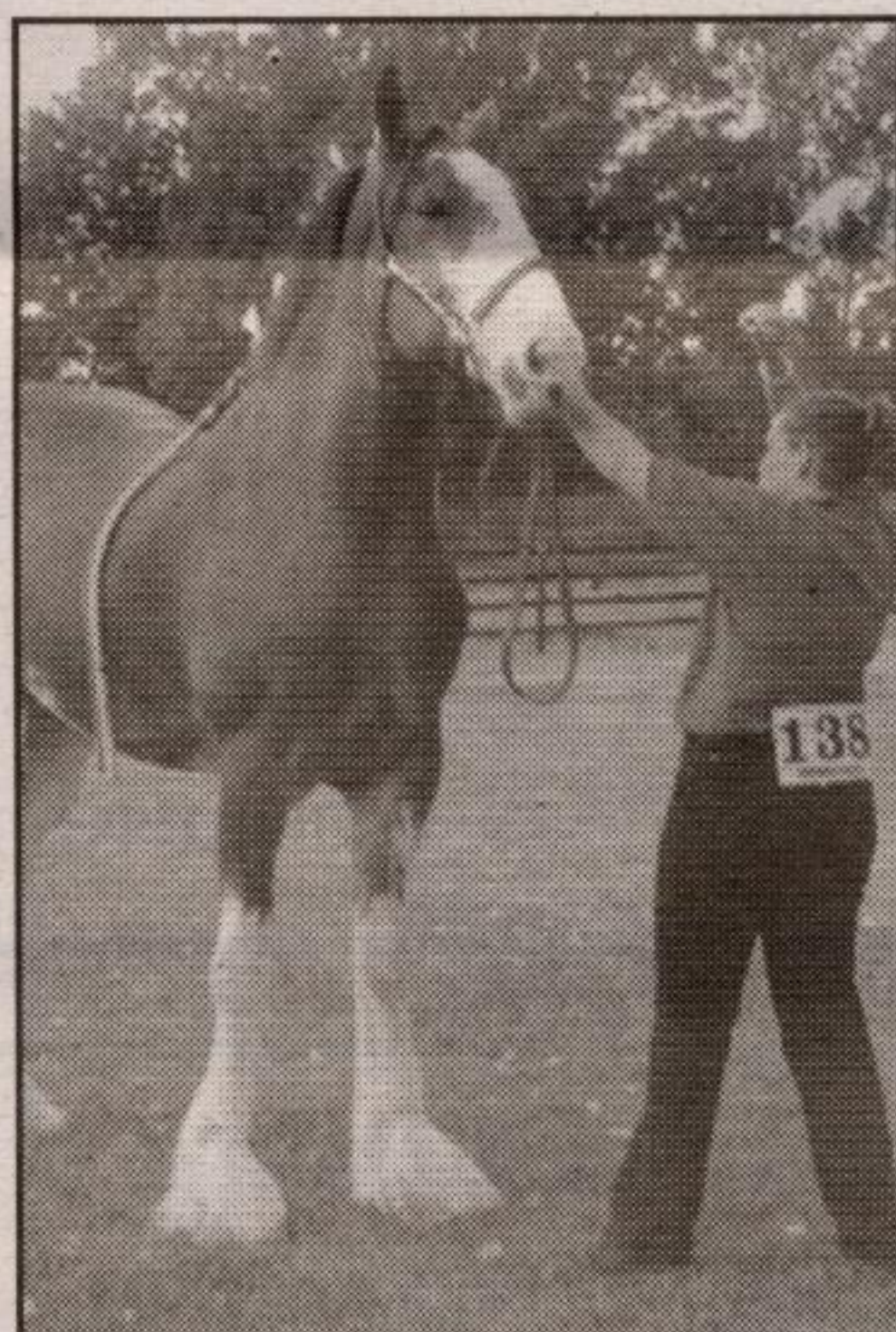
Judge Evelyn Gillies, Scott Martin (Reserve Calf) & David White (Champion Calf)



2002 Halton 4-H Beef Club: (back row l-r) Kyle Stevenson, Adam Parker, Will Stull, Clark Sinclair, Melissa Rogers, Sarah Darling, Paula Darling, Abbie Brander and Judge Evelyn Gillies (front row l-r) David White and Scott Martin (Absent Becky Parker and Suzanne Thibodeau).



Melissa Rogers

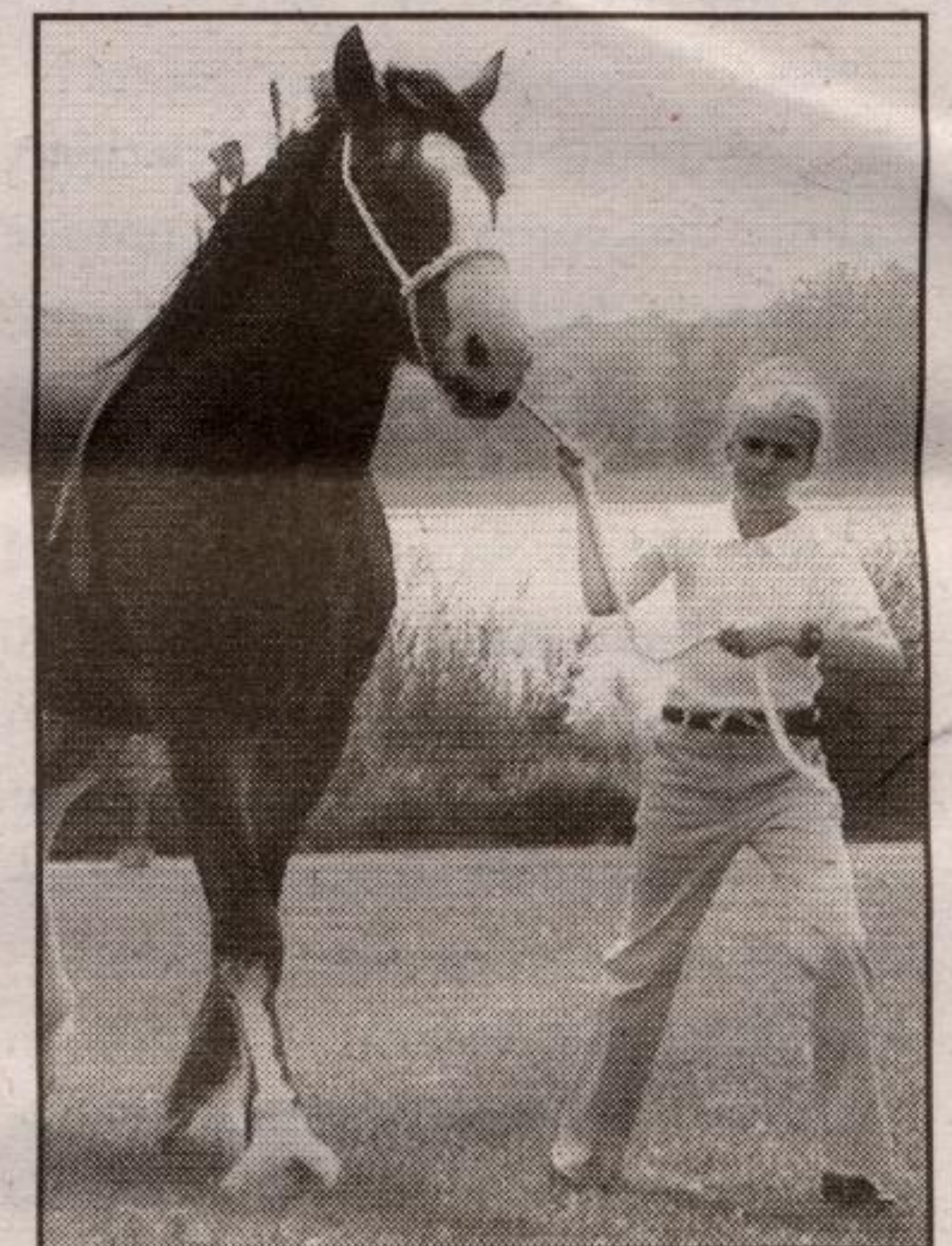


Abbie Brander
Champion Showmanship
Champion Conformation

Halton 4-H Heavy Horse Achievement Program

August 11, 2002
at Mountsbeg CA

Elizabeth Imhof
Champion Mare



Jodey Nurse (Reserve Conformation) & Brenda Mathies (Halton 4-H Coordinator)

Halton 4-H Social Recreation Achievement Day
August 25, 2002 Percy W. Merry School



Jenn Duff and John Opsteen passing the orange



2002 Social Recreation Club

4-H sponsored by ...



Ted Chudleigh, M.P.P. - Halton

Constituency Office:
192 Main St., Suite 100
Milton, ON L9T 1N8

Tel. (905) 878-1729
Fax (905) 878-5144

email: ted_chudleigh@ontla.ola.org

