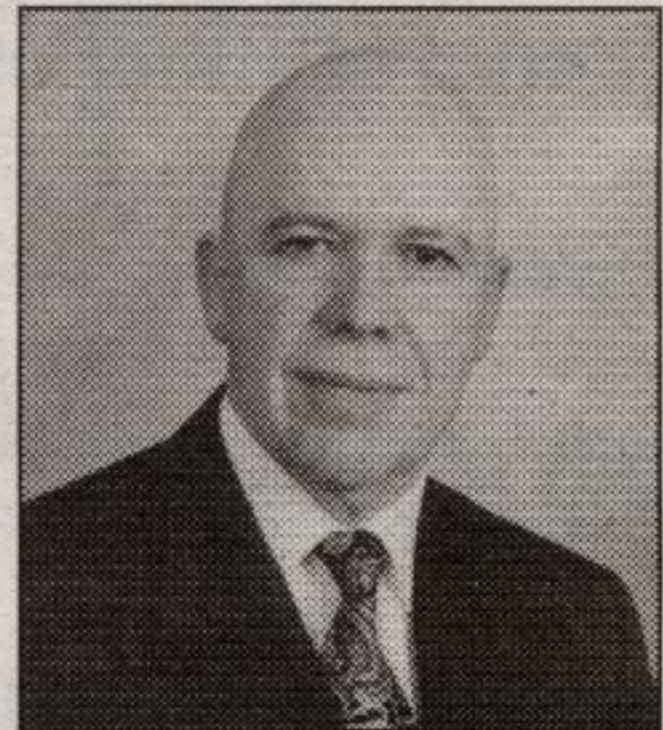


**We look at  
the whole  
picture.**

**Protect your  
family tree.**

We offer comprehensive insurance and estate planning for you and your family.



**Lou Mulligan,  
CFP, RHU**

**MONEY  
CONCEPTS**

**AEGON.**  
Dealer Services  
Canada Inc.

420 Main Street East,  
Milton  
**905-876-0940**

Money Concepts Group Capital Corp. and National Financial Insurance Agency Inc.



Mary Wheelihan  
Callahan

~ circa 1850 ~

David Wheelihan,  
uncle to John D  
and Frank A.

~ circa 1880 ~



John D. Wheelihan

~ circa 1880 ~



Frank A. Wheelihan

~ circa 1880 ~

# Shoebox



The potato famine in Cork, Ireland in mid 1840s prompted Mary Wall Wheelihan, a 31-year-old widow, to bring her family to seek a better life in Canada, the land of opportunity. After a long, hard crossing she settled in with John, Nicholas, Alex, James, W.P. and Mary Anne (leaving sickly Julia to follow a year later) at Lot 6 Conc. 4 of Nassagaweya. Shortly after her arrival she married Patrick (Tom) Callahan. It's not known but is suspected that he came ahead to find a place for the family. The couple then had Peter, Bridget, Thomas, Frances, and Edmund. Of Mary's first family W.P went to Minnesota, James to North Dakota, John to Michigan and Nicholas to Guelph. They were all brought back and buried in Freelon Roman Catholic Cemetery.

David, a bachelor, was a councillor in Nassagaweya from 1882-1888. He was associated with Henry Cargill in the early years. He had two lumber mills, a flour mill, exported wheat and lumber, farmed, and spent his winters in New Orleans with his racehorses. David was also known as the village banker. His sisters Mary Anne and Julia kept house for him - when he would let them. At his death they lived in Hamilton. Land for St. David's Presbyterian church was given to trustees Peter Campbell, William McPhail and William Elliot with the stipulation that fences be kept in good repair. Alex operated a hotel on Guelph Line for several years, eventually marrying Ester Smith, a daughter of Thompson Smith (one of the early settlers). They had sons John D. and Frank A. Ester died at Frank's birth of TB. She is buried in the old Campbellville Burying Grounds.

John and Frank were both telegraphers on the old Santa Fe Railroad. John D. remained a bachelor, and worked mostly in New Orleans and then California, retiring there and spending summers in Campbellville. He owned one of the first cars, a Lexington, which he



Wheelihan family

~ circa 1925 ~

Back L to R: Ester, Jack,  
Teresa  
Front L to R: unknown,  
Uncle John, Frank A.

Mary Wall (Wheelihan)  
b. 1816, d. 1891



Wheelihan  
Family Tree

m.? Wheelihan

Julia Wheelihan  
b. 1834, d. 1912

Alex Wheelihan  
b. 1835, d. 1918

m. Ester Smith

John Wheelihan  
b. 1835, d. 1909

David Wheelihan  
b. 1840, d. 1907

Nicholas Wheelihan  
b. 1841, d. 1924

James Wheelihan  
b. 1843, d. 1918

W.P. Wheelihan  
b. 1844, d. 1909

Mary Ann Wheelihan  
b. 1845, d. 1902 ?

Bridget  
b. 1849, d. 1876

Francis E.  
b. 1851, d. 1882

Edmund  
b. 1852, d. 1885

Peter  
b. 1855, d. 1856

Thomas  
b. 1856, d. 1878

John D. Wheelihan  
b. 1859, d. 1924  
Frank A. Wheelihan  
b. 1861, d. 1930  
m. Teresa D.



Mrs. Frank  
Wheelihan (Tess)  
and children  
Esther and Jack

~ circa 1910 ~

m.2 Patrick Callahan  
b. 1816, d. 1893



Teresa Wheelihan  
on her 90th

• Pioneers in practical, energy-efficient housing

• Small-scale company providing constant on-site supervision and personal interaction with clients

• Uniquely crafted homes, additions and renovations

• Extreme care taken in choice of building material for quality and chemical composition

• Barrier-free access and attention to other special needs is 'our standard'

"We believe we build the most efficient and comfortable homes in Ontario."

**BRADEN**  
HOMES LTD

(519) 856-9306

Fax:

(519) 856-9611

Rockwood,  
Ontario

Visit us at our new web site!

[www.bradenhomes.ca](http://www.bradenhomes.ca)

*Country  
Depot  
Garden Centre*

**Fall Gardening**

- Fall Mums • Statuaries
- Flowering Kale • Giftware
- Indoor Tropicals



Where great gardens get their start!

Store Hours  
Mon-Fri 8-6 Saturday 8-5

28 BRONTE ST. N. MILTON

(905) 878-2391

SISTER'S

Your first choice for

Come in and see our goods  
Give us a call to bring in your

26B Main Street East,