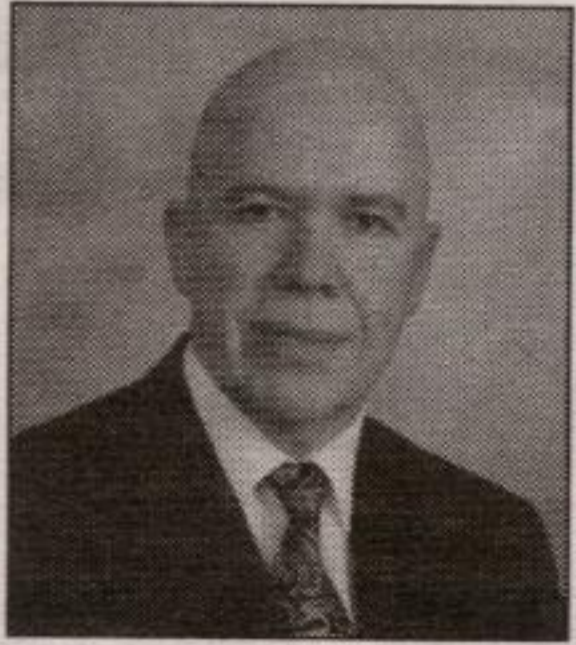


**We look at
the whole
picture.**

**Protect your
family tree.**

We offer comprehensive insurance and estate planning for you and your family.



**Lou Mulligan,
CFP, RHU**

**MONEY
CONCEPTS**

AEGON
Dealer Services
Canada Inc.

420 Main Street East,
Milton
905-876-0940

Money Concepts Group Capital
Corp. and National Financial
Insurance Agency Inc.

• Pioneers in practical,
energy-efficient housing

• Small-scale company
providing constant
on-site supervision
and personal interaction
with clients

• Uniquely crafted
homes, additions
and renovations

• Extreme care taken
in choice of building
material for quality and
chemical composition

• Barrier-free access and
attention to other special
needs is 'our standard'

**"We believe we build
the most efficient
and comfortable
homes in Ontario."**

BRADEN
HOMES LTD

(519) 856-9306

Fax:
(519) 856-9611
Rockwood,
Ontario

Visit us at our new web site!

www.bradenhomes.ca



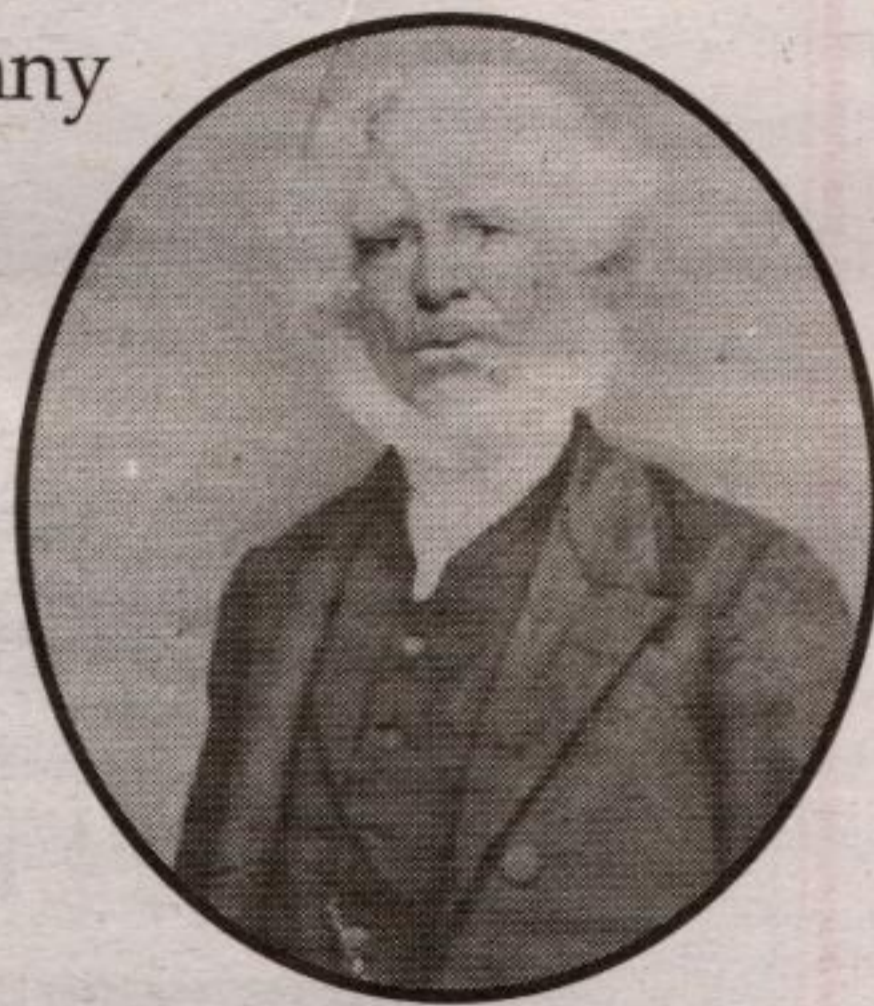
Churchill Church
Lot 32, Conc. 3
Esquesing Twp.

~ circa 1890 ~



Reverend Hiram Denny
Congregationalist
Circuit Rider

~ circa 1875 ~



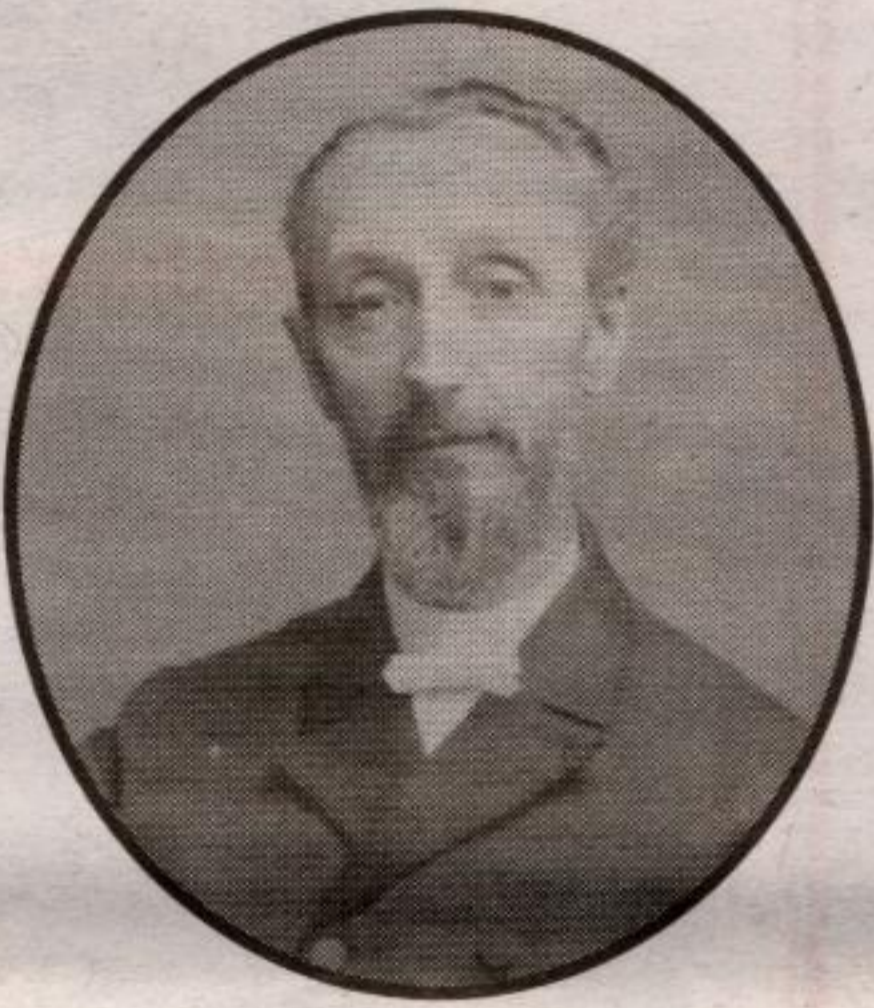
Jacob Swackhammer

~ circa 1860 ~



Rev. Joseph Unsworth

~ circa 1870 ~



Rev. Henry & Mrs.
Caldwell

~ circa 1930 ~

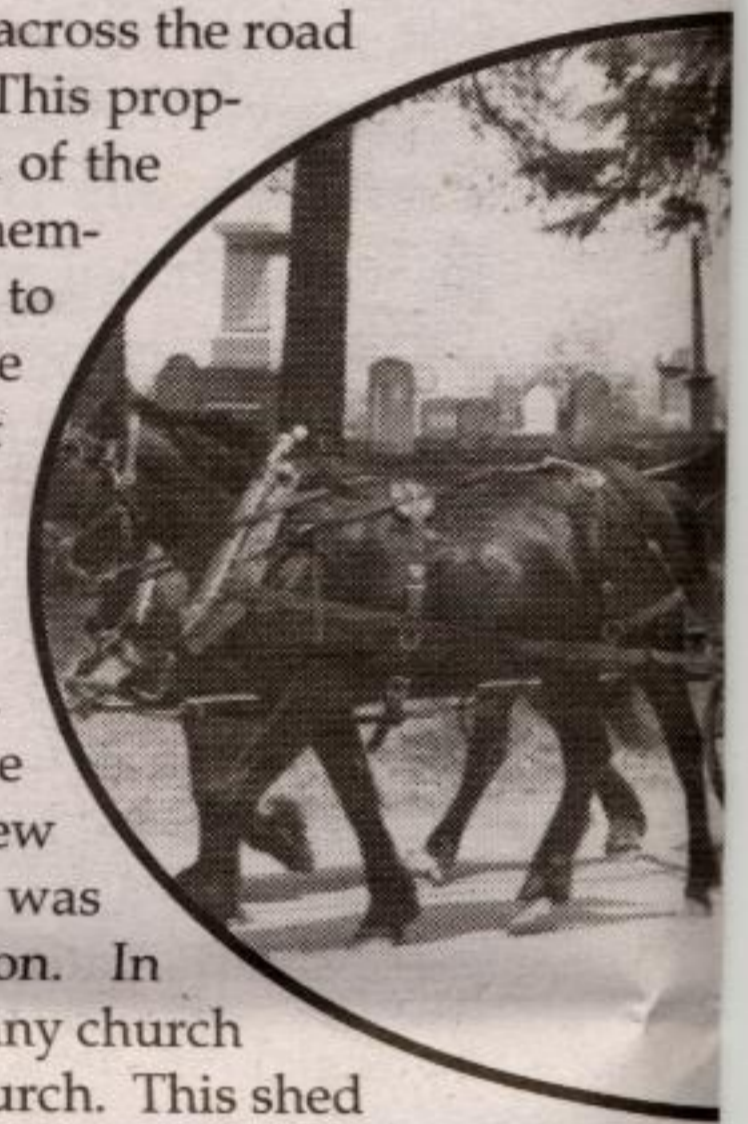


Churchill Women's Association

~ circa 1900 ~

Back Row, L. to R. - Mrs. Alex Russell, Mrs. Austin Swackhammer, Miss Edna Russell, Miss Minnie Russell, Mrs. Thomas Ryder, Mrs. Duncan McMurchy and Mrs. John Denny. Middle Row - Mrs. James Kerr, Miss Lizzie Brownlee, Mrs. Albert Smith, Mrs. Joel Leslie, Mrs. Harry Gibbons and Mrs. Smith Griffin. Front Row - Mrs. John Smith, Mrs. George Roszell, Miss Cassie Roszell, Mrs. Christopher Swackhammer and Mrs. Henry Denny.

In 1836 the Congregational church in England sent Rev. Hiram Denny to Guelph to replace Rev. E. Parkin and becomes a circuit rider in Canada West. He visited his flocks which met in schools, homes and businesses. Rev. Denny established congregations at Alton, south Caledon and Georgetown. A group formed in the school house on the property of Jacob Swackhammer, on the west half of Lot 32, Conc. 4. The first minute book records: on Saturday, Feb. 4, 1838 a congregational church was formed by the Rev. H. Denny in the school house, situated on Jacob Swackhammer's farm in Esquesing, consisting of the following persons; Jacob Swackhammer, William Swackhammer, John Gibbons, Peter Masales, Hannah Swackhammer, Sarah Swackhammer, Mary Swackhammer, Sarah Harris, Mary Denny, Nancy Ann Gibbons, and Mary McCutcheon. Peter Masales and Jacob Swackhammer were the first appointed deacons. Plans were soon underway to build a church edifice. At a meeting held in the summer of 1839, it was resolved that Jacob Swackhammer, John Smith and Peter Masales be trustees for the meeting house and that the bank for the deed be held by Jacob Swackhammer. The price of the land was one pound, part of the east half of Lot 32, Conc. 3 and was purchased from Jacob Snyder and was located across the road from the school house situated on Lot 32, Conc. 4. This property later became the Churchill cemetery. The men of the congregation cut the timber and built the church themselves. Jacob Swackhammer had lumber prepared to build a new house on his farm, but felt that the church was a priority and so he donated it and put off his own building plans. The seats were planks with a support at each end and one in the centre and a four or five inch rail across the back. A later style had posts at the end with oil lamps in brackets. During the ministry of Rev. Henry Caldwell in the 1930's the original interior was renovated with new seating and hardwood floors installed. Electricity was added during the ministry of Rev. G. I. Stephenson. In 1953 a new foundation was added. Prior to that, many church festivities were held in the drive shed beside the church. This shed was later taken down and part of it used for an addition at the back. Prior to 1954 the men held a wood-bee for donated wood for fuelling the church's box stove. However, an oil furnace was installed that year. In 1962 the congregation proudly held a mortgage burning ceremony. Through the years many fine ministers served the pastorate. Rev. Denny, who



Churchill 150

Mr. and Mrs. C. Wallace Swack
buggy ride by Churchill Cer
Walsma.

Churchill Concert Orchestra

~ circa 1930 ~



Back Row, L. to R. - Margaret Brown, Harold Swackhammer, Charles Longborough and A. Thurston. Front Row - B. McCausland, Leslie Swackhammer, Archie Kerr and Roy Johnston

Photo and background information courtesy of Churchill Comm

Country Depot

20% Off Flowering Shrubs
Time limited offer - Check store for details

- Wide selection of Perennials
- Pond Plants • Statuaries
- Annuals • Giftware
- Outdoor Furniture

FREE PERENNIAL SEMINAR
Saturday, June 1

We are more than what you think we are!

Store Hours: Mon-Fri 9-6 Saturday 9-5 Sunday 11-4

28 BRONTE ST. N. MILTON (905) 878-2391

Peel Mutual

MH

McCaslin Ho

• Farm • Home • Aut

Call (905)877-873

"A Part of Ou