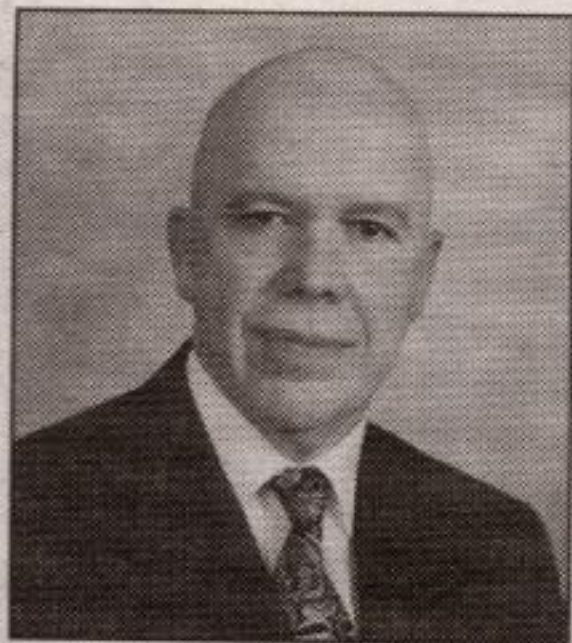




**We look at
the whole
picture.**

**Protect your
family tree.**

We offer comprehensive insurance and estate planning for you and your family.



**Lou Mulligan,
CFP, RHU**

**MONEY
CONCEPTS**

AEGON
Dealer Services
Canada Inc.

420 Main Street East,
Milton
905-876-0940

Money Concepts Group Capital
Corp. and National Financial
Insurance Agency Inc.



*That's why today's
woman needs a life
insurance plan of
her own.*

State Farm Life
Insurance can help
meet your immediate
needs and help secure
future goals

Come see us:

Don MacRae
(905) 878-8109

Anita Cutaia
(905) 878-8871

485 Main Street, E.
Milton, ON
Fax (905) 878-7678



State Farm
Understands Life.™

statefarm.com™
State Farm Insurance Companies
Canadian Head Offices:
Scarborough, Ontario



Robert Craine
~ circa 1875 ~



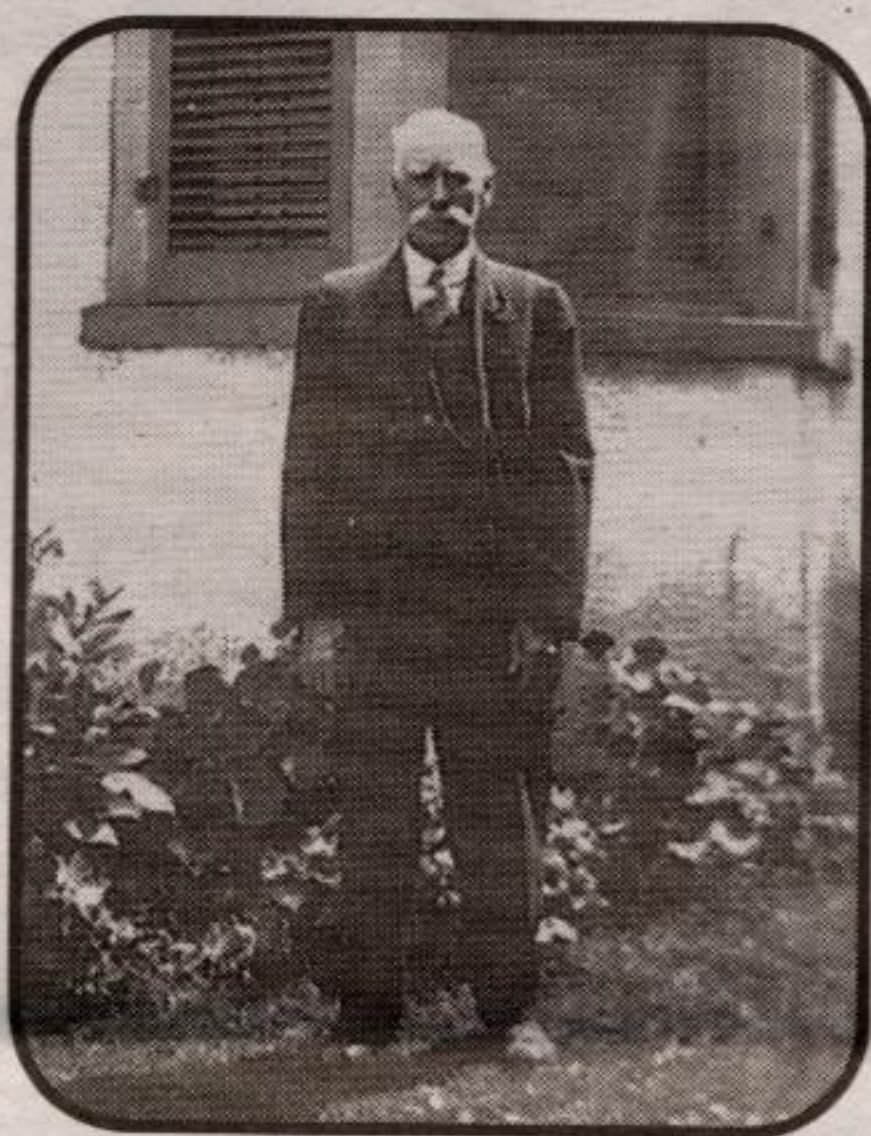
Elizabeth Craine
~ circa 1875 ~



Mary Jane Craine
~ circa 1875 ~



Sarah Craine
~ circa 1875 ~



Thomas Lewis Craine
~ circa 1910 ~



Isabella Craine
~ circa 1910 ~



Charles Craine Family
~ circa 1919 ~

Back Row, L. to R. - Maggie, Oscar, Mabel, Thomas, Vera,
William and Charles Craine. Front - Edgar and Gladys Craine.

Robert Craine was born in Isle of Man, and died in Rawdon Township, Lower Canada. He married Elizabeth McNown on June 13, 1818 in Braddan, Isle of Man, daughter of William McNown and Fanny Norris. Elizabeth was born at Ardglass, County Down, Ireland, and died in Lindina, Juneau Cty., Wisconsin. The Craine family came to Canada about 1825. Rawdon is a township in Quebec (Lower Canada) north of Montreal. It is thought that the name McNown came from the spelling MacNewin. After Robert Sr. died, the family moved to Wisconsin, except Robert Jr., who stayed in Quebec, and Thomas, who came to Glen Williams, Ontario. Thomas Craine was born in Isle of Man, and died in Toronto York County, Ontario. His wife Sarah Brown was born and died in Esquesing Twp., Halton Cty., Ont. Thomas was a shoemaker and had a shop in Acton from 1873 to 1887 and lived on Mill Street. He was buried in Acton. Two books; "Down In The Glen" and "Glen Williams on the Credit River" - list Thomas as a shoemaker in Glen Williams about 1850. Thomas and Sarah's son Robert was born in Glen Williams and died in Toronto. He married Elizabeth Kennedy March 05, 1877 in Acton. Robert Craine worked with his father in the Craine shoe shop in Acton and became a salesman. He was also a member of the Independent Order of Odd Fellows. Elizabeth and Robert's daughter Colina Gordon Craine was a singer in Toronto. She had a "beautiful lyric soprano voice" and was "much in demand at concerts throughout Ontario." (The Legend of Jack Munroe) Her husband John (Jack) Alexander Munroe was born in Upper Kempt Head, Boulardarie, Cape Breton, Nova Scotia. In a book written about him, "The Legend of Jack Munroe: A Portrait of a Canadian Hero," by Dorothy Farmiloe, tells his life story. Munro wrote "Mopping Up" the story of the Princess Patricia's Canadian Light Infantry during WWI, as seen through the eyes of his dog, Bobbie Burns, the Regimental Mascot. Son Thomas Lewis Craine was born in Esquesing and settled in Flint, Michigan, U.S.A. He married Isabella Gray, daughter of Hudson Gray and Rebecca Grasley. She was born in Erin Twp., Wellington Cty., Ontario, and died in Michigan. Thomas Lewis Craine worked in Milton at one of the brickyards. In 1900 the whole family went to Hillman, Michigan - all except sons Charles- who stayed in Milton until about 1918. Son James Lawrence (Lorne) owned a General Store in Terra Cotta, which is now the Terra Cotta Inn. Lorne had returned from the States in about 1914. Charles Craine was born in Mimosa, Wellington Cty. and died in Guelph. He married Margaret Hilson on December 12, 1898 in Nassagaweya, Halton County, daughter of Thomas Hilson and Maria Johnson of Nassagaweya. Charles worked at one of the quarries in Milton until about 1914 when he took a job at Gilson's Electric in Guelph. The family moved to Guelph shortly thereafter. Their son Oscar Charles operated the first automobile garage in Terra Cotta in 1922 at the Forge. Son Thomas David married Elizabeth Louisa Hasler, lived in Guelph and had two sons, David and William. Daughter Vera married Albert May. Mabel married George Wingfield. Robert died at the age of one in Milton. Gladys Craine

Robert Craine
b. 1795, d. 1849



Craine
Family Tree

Elizabeth McNown
b. 1798, d. 1884

Robert Craine
b. 1818, d. 1892
William Craine
b. 1820, d. 1895
Thomas Craine
b. 1822, d. 1906
Sarah Brown
b. 1827, d. 1861
George Craine
b. 1830, d. 1895

Robert Craine
b. 1851, d. 1905
Elizabeth Ken
b. 1857, d. 192
Thomas Lewis Cr
b. 1854, d. 1914
Isabella Gray
b. 1856, d. 192
Mary Jane Craine
b. 1855, d. ?
Lemuel Masala
b. 1850, d. 1883
Sarah Craine
b. 1856, d. 1947
James McGill
b. 1856, d. 194
John Craine
b. 1859, d. ?

Partial direct line for Milton Heights family. Photo and background information courtesy of William J. Craine, John Craine, Ruby Craine, Dave and Betty Craine and Margaret Jaques. Compiled by Reid Kennedy.

Shoebox



The Craine's of Milton

**Country
Depot**

We are more than
what you think we are!

Store Hours
Mon-Fri 8-6
Saturday 8-5
Sunday CLOSED

Think Springs!

**Free Water Gardening
Seminar**

**Saturday, April 6th
10:30 am
Phone to register**



28 Bronte St. N.
Milton, ON L9T 2N5
(905) 878-2391



Peel Mutual

McCaslin Ho

• Farm • Home • Auto

Call (905)877-8738

"A Part of Our