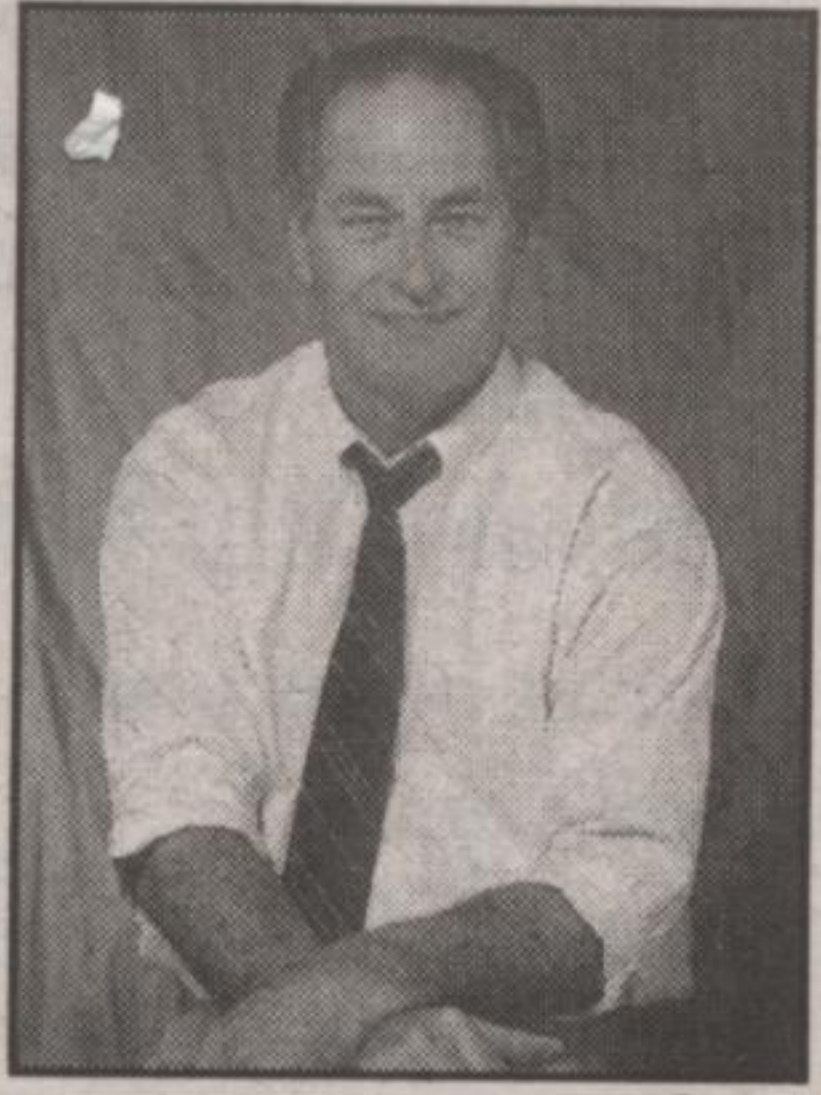


**Ted
Chudleigh,
MPP
Halton**



**CONSTITUENCY
OFFICE**

**192 Main St.,
Suite 100,
Milton, ON
L9T 1N8**

Tel. (905) 878-1729,

Fax (905) 878-5144

email:

ted_chudleigh@ontla.ola.org



Ontario



"Have you done anything about
your loose dentures?"

DENTURES

LAB ON SITE

- 1 hour repairs
- Same day relines
- Immediate dentures

No referral needed –
Call us direct

**G.T. Trenton,
D.D.**

the denture specialist

Martin Street

Main Street

James Street

159
**Milton
Denture
Clinic**

*It's worth the drive
to Milton!*

**159 Main St.
Milton**

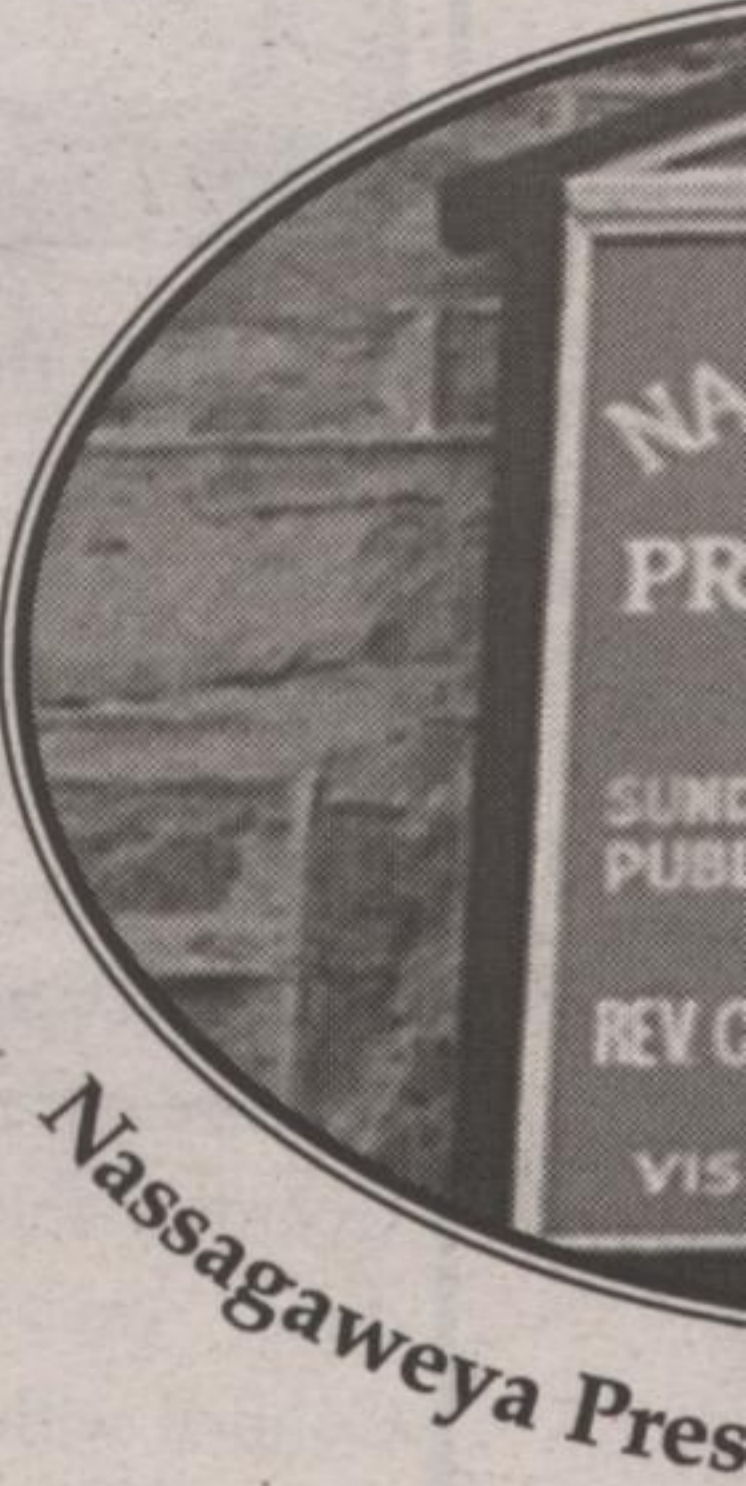
905-876-2000



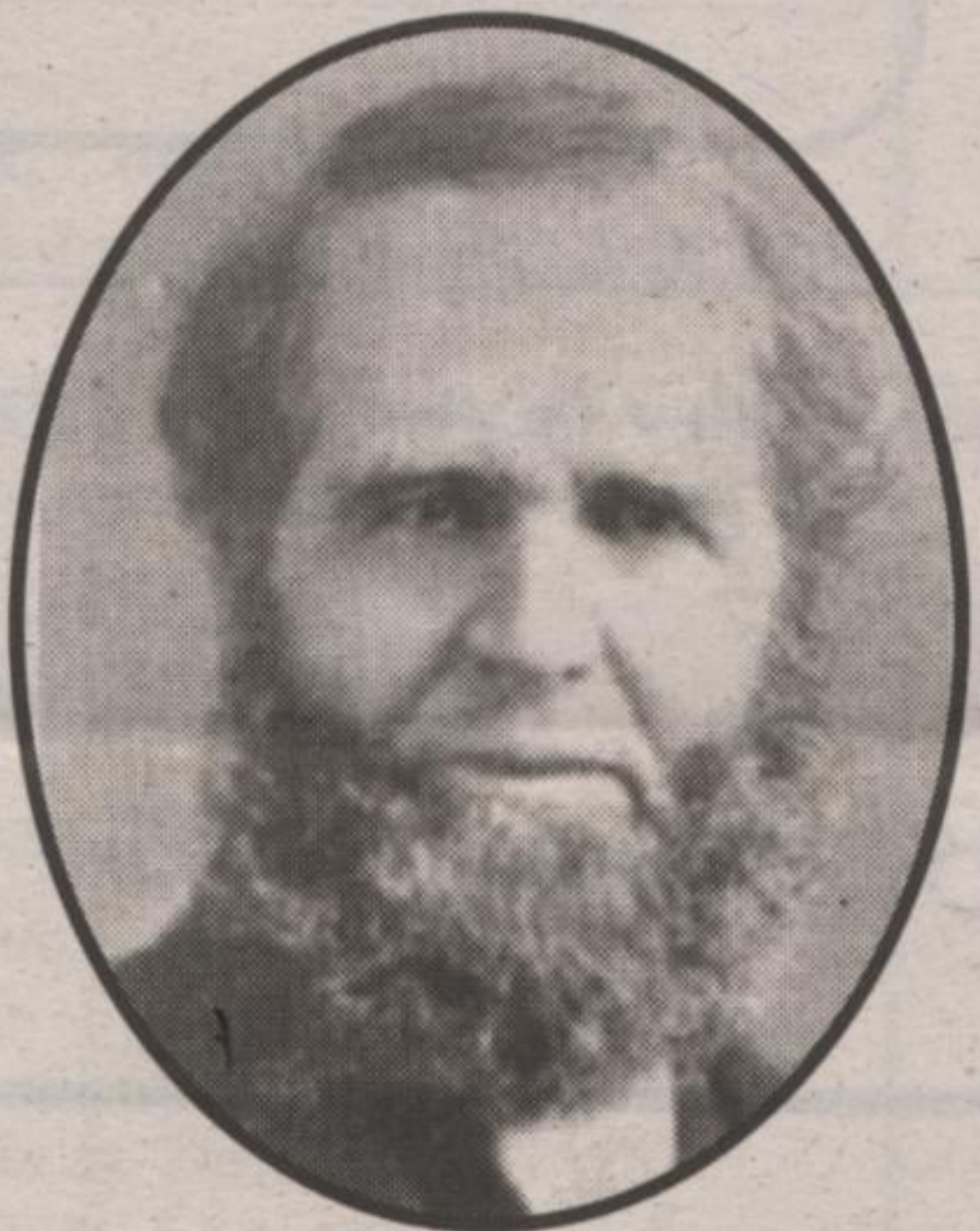
Shoebox

**Nassagaweya
Presbyterian Church**

~ 1836 - 2001 ~



**Rev. Archibald Blair
1885-1915**



**Rev. Wm. Meldrum
1840-1854**



**Rev. A. J. McAulay
1854-1864**

History builds itself around characters and their achievements and looking back over a church's history, such is found in the past. The church was the first center of Presbyterianism in the township. Many members of the congregation today are third generation. The church was first designated as Nassagaweya. Nassagaweya Church was organized in 1836 in a schoolhouse (located on the corner of Main Street, west side south of 15th Sideroad). The first church was a frame building, erected in 1839. During the first three years, the church was held on horseback. The first elders were John McAlpine, John Bell, and John McKinnon. The stone building as it now stands was built in about 1825 donated the site of this church. He settled on the west half of Lots 16 and 17 in the 4th Concession. The deed specified that the whole of the work was to be done in a good and workmanlike manner. The trustees of the church at the time specified the masonry or stonework on the church. The carpentry work was by Neil Livingston. Aside from the church not many homes still remain at various distances from the church. We know the fine type of men and women who settled in Upper Canada and naturally they desired to meet to study the word of God. Rev. Duncan McMillan stated that in 1828 he had found people he said were, in general, much like the country - wild and uncultivated and that there were spiritual destitution. The first church was built early 1900's. Stoves first heated the present church and then furnaces were installed. The first Communion had been held by ministers over the years, born in Islay, Scotland came to Canada in 1828. In April of 1831 he settled in Caledon and in 1833 he moved to Meldrum. On the 11th day of March 1840, Mr. Meldrum was ordained and inducted as pastor of the congregations of the Nassagaweya Presbyterian Church, often accompanied by Dr. Smellie of Fergus, Dr. Gale of Hamilton, and Dr. Bayne of Galt. Mr. Meldrum remained in the church from top to bottom. He married Miss Anna McLean, daughter of Peter McLean of Puslinch on Christmas Day, 1845. His family in 1843-4 remained with the Presbyterian Church of Canada. It was in such connection in 1854 when Rev. Andrew Jones was the present church was built in 1861. In 1866 Rev. James Little became the pastor at Nassagaweya, resigning 1875 to go to Scotland and founded and with 58 members of Nassagaweya worshiped in a small frame church until 1891, when the present St. David's Church was built from Nassagaweya. Rev. John Neil, a graduate of Knox College accepted the vacant charge in 1882, but left within a year. He was followed by Rev. J. T. Strachan in July 1916 and he remained until 1926. Rev. C. G. Jones was inducted into the charge in 1926. In 1949, Rev. James Sutherland 1950-1954, Rev. Gordon S. Baulch 1954-1957, Rev. Harold C. Marr 1958-1962, Rev. John S. Desmond Howard 1980-1990, and the present Rev. Glen Soderholm, who started ministering the congregation in 1991. The church was a pulpit, shut in his stall by a door. Only psalms and paraphrases were sung, hymns were regarded lacking in inspiration. The church until after a rather bitter fight. One of its members printed a circular that protested very strongly against this. The organ as an instrument of the devil. The organ was installed at a cost of \$14. At first two box stoves, on each side of the church, the ney flue was built into the north end wall in the shape of an inverted Y. In 1893 two furnaces were installed in the basement to accommodate the furnaces. By 1895 the congregation had increased in size until more seating was required. The gallery, porch, tower and steeple be built over the entrance to enhance the appearance of the church. The tower was to be built from the gallery into the tower and a circular stairway built inside the tower. This project never materialized. Two acres of land for a new manse. Rev. James Little donated one acre of land, Lot 16 Con 4. John Cameron of Acton was Architect, Henry Campbellville was purchased. In turn this was also sold and a new manse was built in Campbellville, beside the present church. The manse was completed. New white ash pews replaced the old ones that were straight and square - very uncomfortable. Rev. W.S. McTavish recalls the pulpit being high, the congregation certainly looked up to the minister in those days. The wall reached by several steps, when the minister entered it he closed the door and shut himself in, little more than his head and shoulders. The Sunday School room built that same year by William Stratton. About 1895 a choir was organized. The singers were in the church. In 1940 Thomas Buchanan designed the present choir loft and with the assistance of William Douglas and Iain MacLennan a brass trimmed chandelier containing 12 kerosene lamps was hung in the center along with three small chandeliers, on each side of the loft. About 1925 two Coleman gasoline lamps were purchased and in 1931 it was decided to install electricity. On February 19, 1931, the church was closed to horses and buggies, cutters and democrats, so two platforms each about 4'x8'x3' high were erected on each front corner to shelter the horses and carriages, one on the east side facing the road, and one on the west. When the automobiles came to the church was donated by the Dunkie Family. In 1940 the two furnaces were replaced by one large Pease Wood burning furnace. The church stands today almost the same and welcome all to come to church, weddings, christenings,



Back Row L to R : Rev. Harold Marr and guest minister Charles Henderson. Middle Row: Tom Kennedy, Brian Cargill, Scott Campbell, Doug Dredge, Elmer Dredge, Ed Dredge. Front Row: Doris Robinson, Barb Dredge, Karen Dredge, Dorothy Dredge, Marjorie Fraser, Velma Norris, Kathy Davies, Bernice Moore, Muriel Coxe. Organist: Donna Manes



Back L to R:
Front L to R:
Henderson

Photos and background information
courtesy of Nassagaweya
Presbyterian Church
Compiled by Audrey Allison



28 Bronte St. N., Milton
905-878-2391

Store Hours Monday to Friday 8 a.m.-6 p.m. Saturday 8 a.m.-5 p.m. Sunday CLOSED

Sit back & enjoy the summer!

Watch for in-store specials on **BBQs, Patio
Sets, & selected Nursery Stock**



Professional
design and
printing

MCNABB