



A MONTHLY SURVEY THROUGH THE FARM FENCEROWS AND VILLAGE VERANDAHS OF NASSAGAWEYA AND ESQUESING

NATURE'S FIRE
**QUALITY EDUCATIONAL
 TOYS, BOOKS, GAMES
 & ACTIVITIES**
 Come in for great summertime
 outdoor toys and
 rainy day activities.
 Great for home or cottage!
223 Main St. E. Milton
(905) 878-0084
www.NaturesFire.com

The North Halton Compass

**Bergsma's
 Paint & Wallpaper**
 Imagine no more!
 Don't miss our one-day sale!

 A STROKE OF BRILLIANCE
 Milton - Downtown
 Serving Halton since 1968

Volume 4, Issue 4

"A Rural Paper to Call Our Own"

July, 2001

Making the Ag Hall of Fame

by Donna Danielli

Over 500 people gathered at the Gambrel Barn at Country Heritage Park on Sunday June 10 for the 22nd annual induction into The Ontario Agricultural Hall of Fame. Six prominent Ontarians who have contributed significantly to the advancement of Agriculture in Ontario were inducted in the ceremony.

This year's first induction was Alexander Peden Connell (1938-1999), who was sponsored by the Ontario Cattlemen's Association and Ontario Seed Growers Association for his work in growing, processing, and marketing superior pedigreed seed and operating a beef feedlot. A producer of pedigreed seed for 37 years, Connell actively participated in the seed industry locally, provincially, nationally and in the International Association of Seed Certifying Agencies.

Martin A. Drew (1874-1949) was the second inductee, and was

sponsored by Larry Drew and family for his work in leading fellow producers in founding the Burley Tobacco Marketing Association in 1935. This was one of the strongest of four marketing plans which arose in Ontario in the year following the proclamation of Canada's new marketing legislation. Martin Drew was recognized as one of this province's most influential pioneer agriculturists.

The third inductee was William Thomas Ewen (1910-1996), sponsored by the Class of 1967A, Ontario Agricultural College. Professor Ewen influenced agriculture through research, classroom teaching and more. His early work applied chemistry to develop rapid soil tests for plant nutrients, studied seed setting, and investigated sources of nitrogen. Professor Ewen also taught soil science courses for 25 years.

Ernest Andrew Kerr (1917-) was the next inductee, sponsored

by the Ontario Institute of Agrologists, Long Point Branch of the Ontario Institute of Agrologists. Dr. Kerr is a skilled plant geneticist who has developed a commercially valuable assortment of fruit and vegetable cultivars that have impacted the horticultural industry locally and internationally. The impact of his work is found in the worldwide use of genetic materials he developed and the benefits they provide to the processing industry, the fresh market, growers and consumers.

The fifth inductee was Kenneth Lantz (1921-) and he was sponsored by the Canadian National Exhibition Association and the Kent County Federation of Agriculture. In the course of his career Lantz served as Assistant Agricultural Representative to the post of Deputy Minister of the Ontario Ministry of Agriculture and Food (OMAF), and he served

(continued on page 3)

A rock of astronomical proportions



Photo by Donna Danielli

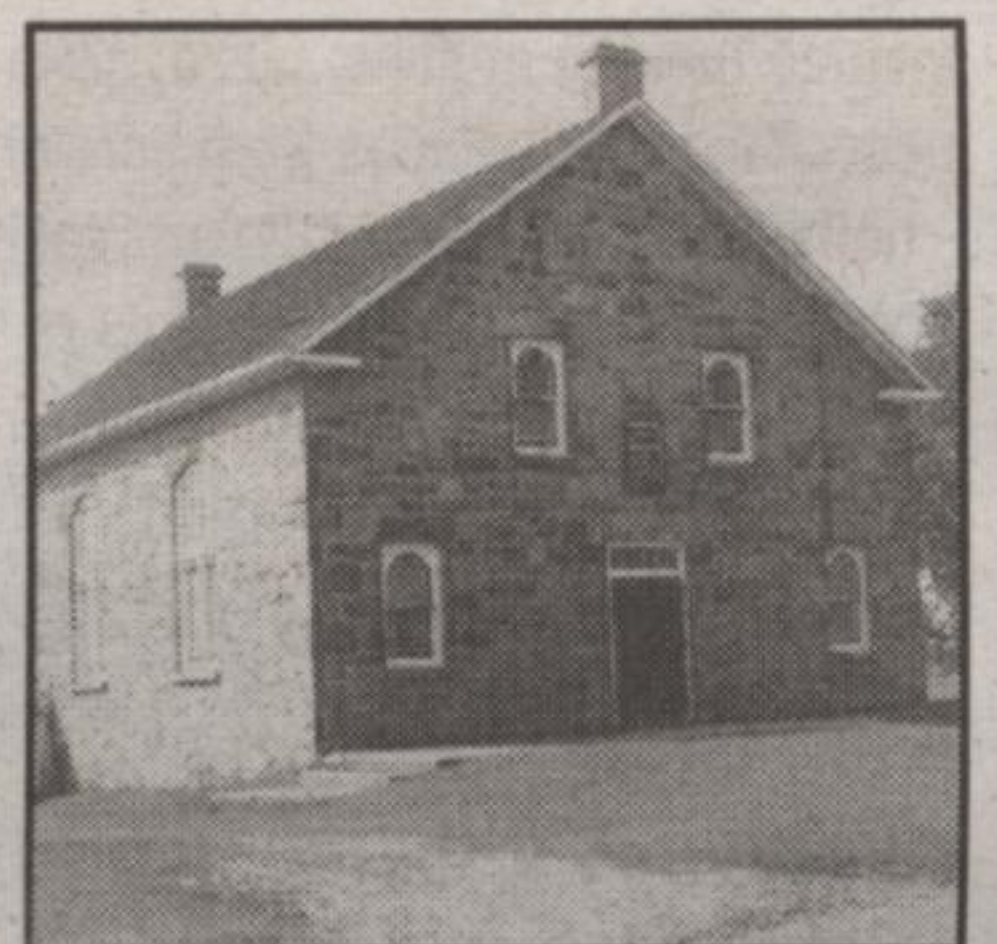
The Town of Milton held the official dedication of the Millennium Garden "Rock" in June. From left to right: Sean James, Fern Ridge Landscaping (designer of the Millennium Garden); Colonel Chris Hadfield, first Canadian Astronaut to walk in space; Percy Ford-Smith, Dufferin Aggregates, and Milton Mayor Gord Krantz.

Inside this Month's Compass

Shoebbox Memories

Nassagaweya Presbyterian Church celebrates its 165th Anniversary. The church was the first center of Presbyterianism in the township, and many members of the congregation today are third and fourth generation families.

page 10



Idle Pursuits

When Pat Thornton moved from Georgetown to Hornby, she was concerned about the social development of her son, Bradley, then aged three, and organized Hornby Co-op Nursery School.

page 13



Halton 4-H

"Learn to do by doing" has always been the 4-H motto, and the Boyne Pretty painters are busily finishing off this year's projects. Find other Halton 4-H group news and more!

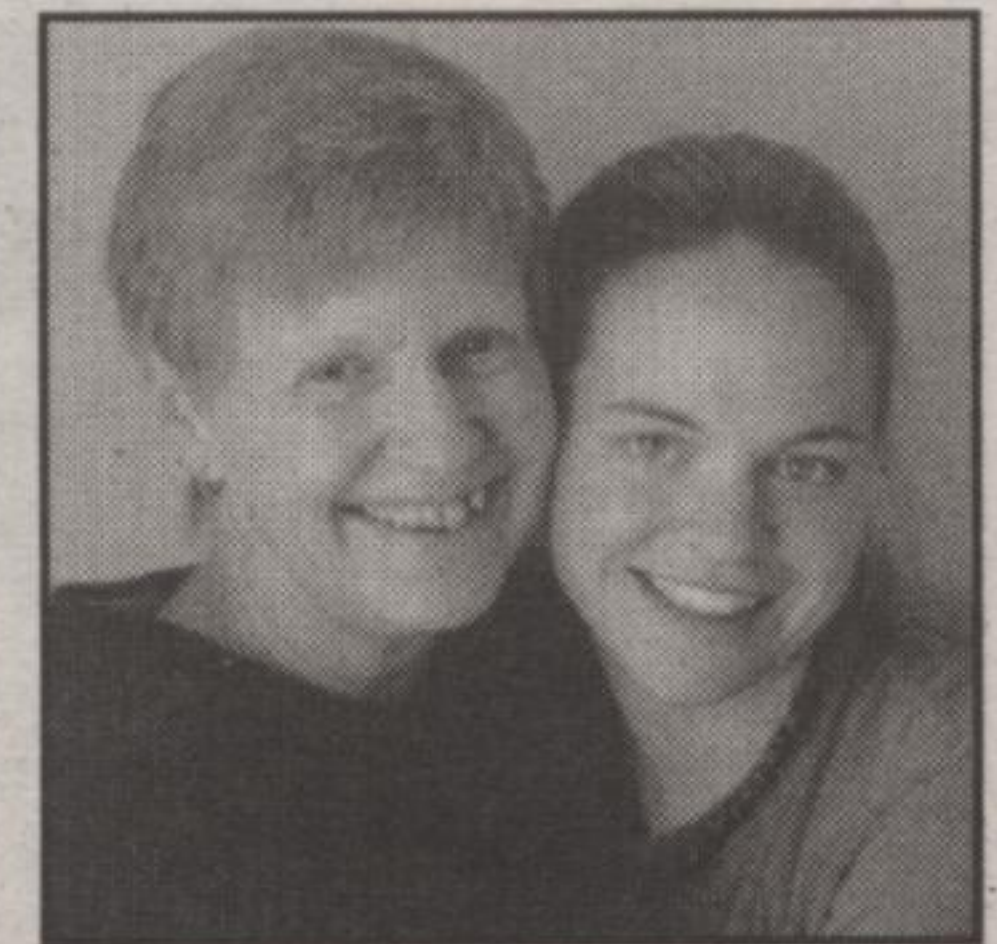
page 16



Community Cornerstone

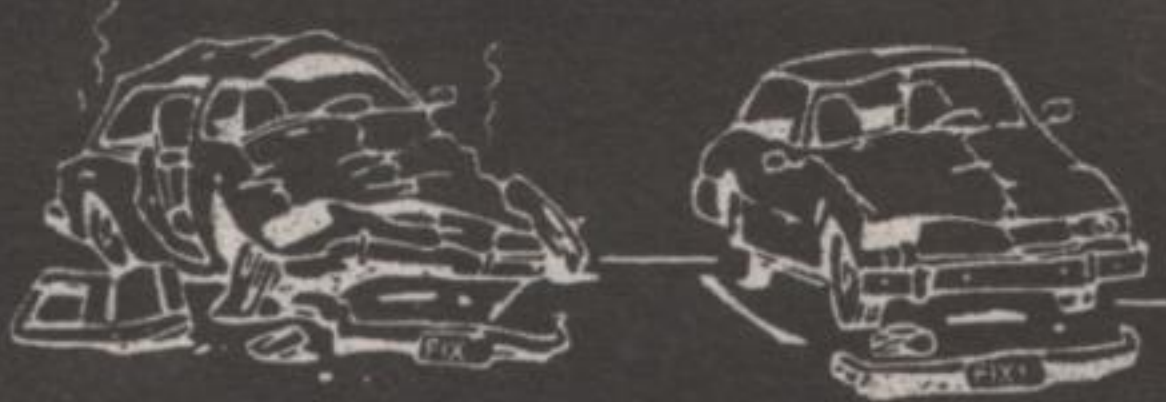
Puslinch resident Helen McQueen will walk a 13½ mile marathon in Lausanne, Switzerland this October to raise funds for and awareness of Arthritis Research.

page 18



**MILTOWNE
 COLLISION INC.**

"We meet by accident"



We specialize in IMPORTS

751 Main Street East,
 Milton
 905-878-6919

LIFETIME WARRANTY



Stop in &
 SAVE

55 Sinclair Ave.
 Unit 2
 Georgetown
 905-702-1182

**New and Used Appliances
 Parts and Service**
 Fridges, stoves, washers, dryers,
 freezers, air conditioners, and more!

Fabulous savings on our
 Scratch & Dent appliances

Free delivery available
 in Georgetown, Milton
 and surrounding area

Come see what we have!



for people who
 deserve the best!

**Spring & Distilled Water
 Cooler Rental Sales & Service**

We deliver throughout
 rural Halton

4L \$1.50 10L \$3.00

Case of 24/500 mL \$7.99

18L \$4.99 pickup/\$7 delivered

723 Main St. E., Milton 905-876-1991 Hours: Mon-Fri 8-5 Sat 8-12