



A MONTHLY SURVEY THROUGH THE FARM FENCEROWS AND VILLAGE VERANDAHS OF NASSAGAWEYA AND ESQUESING

NATURE'S FIRE
 QUALITY EDUCATIONAL
 TOYS, BOOKS, GAMES
 & ACTIVITIES
 Come in for great summertime
 outdoor toys and
 rainy day activities.
 Great for home or cottage!
 223 Main St. E. Milton
 (905) 878-0084
 www.NaturesFire.com

The North Halton Compass

**Bergsma's
 Paint & Wallpaper**
 Imagine no more!
 See you at
Showcase Milton 2001

 Georgetown - Marketplace Mall
 Milton - Downtown
 Brampton - Hwy 10 N 407
 Serving Halton since 1968

Volume 4, Issue 3

"A Rural Paper to Call Our Own"

June, 2001

Recommendations of the GTSB

by Donna Danielli
 The Compass

On May 1, 2001, Gordon Chong, Chairman of the Greater Toronto Services Board (GTSB) sent a letter to the Minister for Municipal Affairs and Housing to inform the Minister of the decisions and recommendations of the GTSB in regard to the mandated review of the Board. The GTSB has a total of 41 members, who between them carry 110 votes. The members are the Mayors and Regional Chairmen of the local municipalities in the Greater Toronto Area (GTA). Their larger populations give Toronto and Mississauga a number of additional seats. Toronto carries a total of 55 votes while Mississauga has a total of 10 votes, and Halton has a total of eight of the 110 votes on the Board.

The Board's review - which was held April 20 - asked for expanded planning authority. The Board has requested the authority to establish a growth management

plan with which the cities and regions would have to comply. It would require that the four regions and the city of Toronto amend their official plans to comply with the GTSB growth management strategy.

"They may say that the GTSB's new role isn't a new level of government," says Town of Milton's Mayor Gord Krantz, "but I always say if it walks like a duck, and it talks like a duck, then it's a duck. Make no mistake, it will be a government, and bigger government is not better government."

Halton Region Chairman Joyce Savoline expressed her concerns about the transfer of planning and development, saying to Milton Chamber of Commerce members, "The Halton Urban Structure Plan (HUSP) did not just happen and it is a plan we should not take for granted. It is a plan that we must continue to invest in,

protect and defend in the coming years."

HUSP is the first plan of its type to meet the requirements of both the Planning and Environmental Assessment Acts and represents a large investment in new water and wastewater servicing infrastructure for growth, as well as strong growth management and control policies.

"This Plan is being implemented, not at the expense of the environment or Halton's agricultural industry. This plan uses land and existing infrastructure more efficiently and provides more opportunities for residents to live and work locally."

Under the GTSB's recommendations to the Province, HUSP would come under control of the GTSB and could potentially be dominated by a Toronto perspective or view of the GTA.

(continued on page 3)

New directions for Willow Park



Photo by Donna Danielli

Willow Park Ecology Centre in Halton Hills is developing a wetland for a more balanced diversification of habitats. The official ground-breaking crew, from left to right are: Steve Foster, Trillium; Councillor Joan Robson; Ruth Kuchinad, Co-ordinator of Willow Park; Daphne Shropshall, Chair of the Town Environmental Advisory Committee; and Doug Clark, EcoTec Contractor.

Inside this Month's Compass

Business Feature

Stuart and Neil Young are a father and son team who have continued a Georgetown history for over 60 years with their pharmacy, located on Main Street.

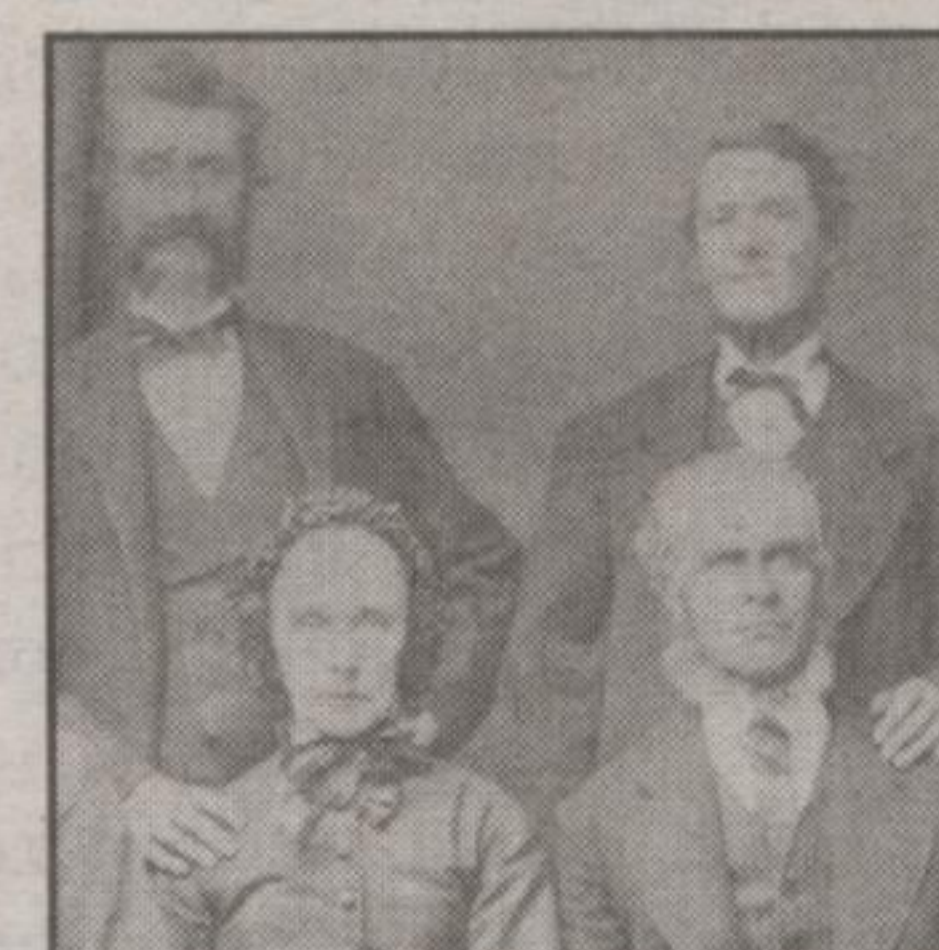
page 4



Shoebox Memories

Thomas Brownridge came from Yorkshire, England in 1819. Thomas purchased the west half of Lot 4, Conc. 7, Esquesing, in partnership with John Taylor in 1822 for 30 Pound.

page 14



Idle Pursuits

Leslie Andrew's new CD is titled *Dream a Little Dream* and is a collection of lullabies for the young and old, ranging in style from Jazz to Classical, Contemporary to Traditional.

page 16



Community Cornerstone

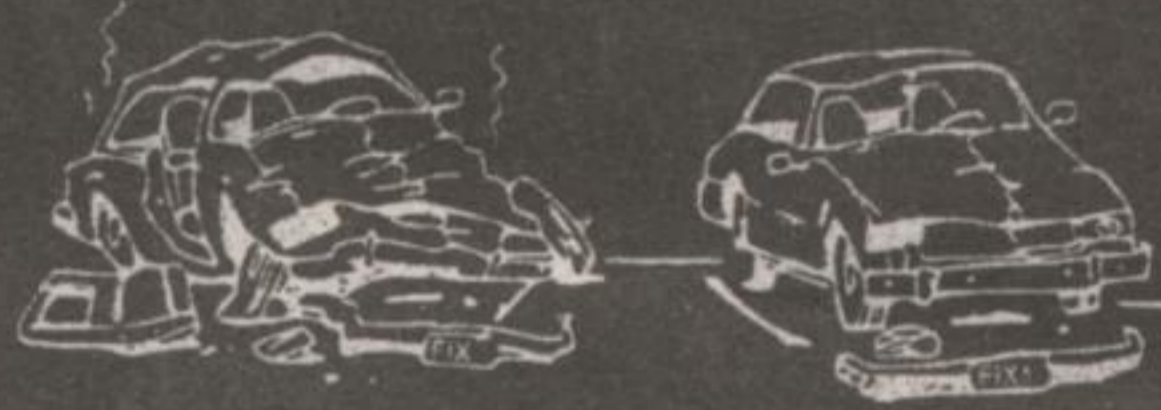
Elayne Tanner, Counselor and Psychotherapist, was recently awarded the Milton Chamber of Commerce's Business Woman of the Year.

page 21



MILTOWNE COLLISION INC.

"We meet by accident"



We specialize in IMPORTS

751 Main Street East,
 Milton
 905-878-6919

LIFETIME WARRANTY

Boatopia GIRLS!!!



• Dresses • Bikinis
 • Skirts • Tank Tops
 • Shorts • Shoes

462 Steeles Avenue, Milton
 905-875-9999

Spring & Distilled Water Cooler Rental Sales & Service

We deliver throughout
 rural Halton

4L \$1.50 10L \$3.00
 Case of 24/500 mL \$7.99
 18L \$4.99 pickup/\$7 delivered



723 Main St. E., Milton 905-876-1991 Hours: Mon-Fri 8-5 Sat 8-12