

Friday February 23

The Milton Seniors' Activity Centre holds a Murder Mystery Dinner Theatre. The Milton Players' Theatre Group will present the *Tale of the Not-So-Lonesome Dove*. Tickets \$20. Call the Centre for details 905-875-1681.

Warmth for the Gambrel Barn

(continued from page 17)

Some visiting couples who book the facility for wedding ceremonies and receptions hold their wedding in the church or barn loft, and the main floor of the Gambrel is used for the reception, accommodating up to 350 guests.

Leathertown LUMBER

264 Main Street North, Acton L7J 1W9
Family owned and operated

Enjoy free coffee while you view our "How To" In-store videos.

Hours:
Monday to Friday
7 a.m. to 6 p.m.
Saturday
8 a.m. to 4 p.m.



Mag "Total Ice Control" Safer for the Environment
\$18.99
50 lb bag

DON'T BE LEFT OUT IN THE COLD FOR MAXIMUM PROTECTION CHOOSE

ROXUL Insulation from **Flexibatt** **\$19.89** bundle

Mini Pickwick pine paneling 14. sq. ft. **\$6.99** bundle

KNOTTY PINE 8' Lengths, 14 sq. ft. **\$14.49** bundle

King SALT & SAND 50/50
\$3.49 each, 20 kg

WEATHERSHIELD BLOWN CELLULOSE INSULATION
Attic & Wall Insulation **\$14.99** bag

4X8 PANELING
Choose from Lightwood Pecan, Northern Pine & Northwind
\$11.99 each
"NEW PRODUCT"

Crafters Plywood Baltic Birch
5' x 5' x 1/8" \$18.99 ea.
5' x 5' x 1/4" \$24.99 ea.
5' x 5' x 1/2" \$39.99 ea.

TARPS FOR WINTER PROTECTION UP TO 30' X 50'

Hobby Craft Clear Pine 1" x 3" x 24" **\$4.99** bundle (8pcs)

Where quality counts first for all your winter projects
(519) 853-1970 "We Deliver"
Fax: (519) 853-2542, Toronto Line (416) 601-1259

We stock **SICO** the largest paint manufacturer in Canada. Choose from over 4,000 colours!



2001s are here!

Come in and see Norm or Willie
North End Nissan

SALES • LEASING • SERVICE
610 Martin St., Milton
(905) 878-4137
Serving Milton & Area for 39 years

- Winterizing
- Brakes
- Tune ups
- Oil Changes
- Front End Alignments



909 Nipissing Road
Milton

905-878-2952



WE DELIVER! throughout rural Halton

For people who deserve the best!

Spring & Distilled Water **905-876-1991**
Cooler Sales & Rentals 723 Main St. E. Milton

No Dicker! No Hassle!
PRICES

PRE-OWNED VEHICLES

NO DOWN PAYMENT • NO PAYMENTS FOR 120 DAYS • NO INTEREST FOR 120 DAYS



1997 Cutlass Supreme SL
V6, Auto, Air, Cassette, P/Wind, P/Locks, Tilt, Cruise, P/Driver Seat, Leather Int. P1943
No Hassle Prices \$12,990



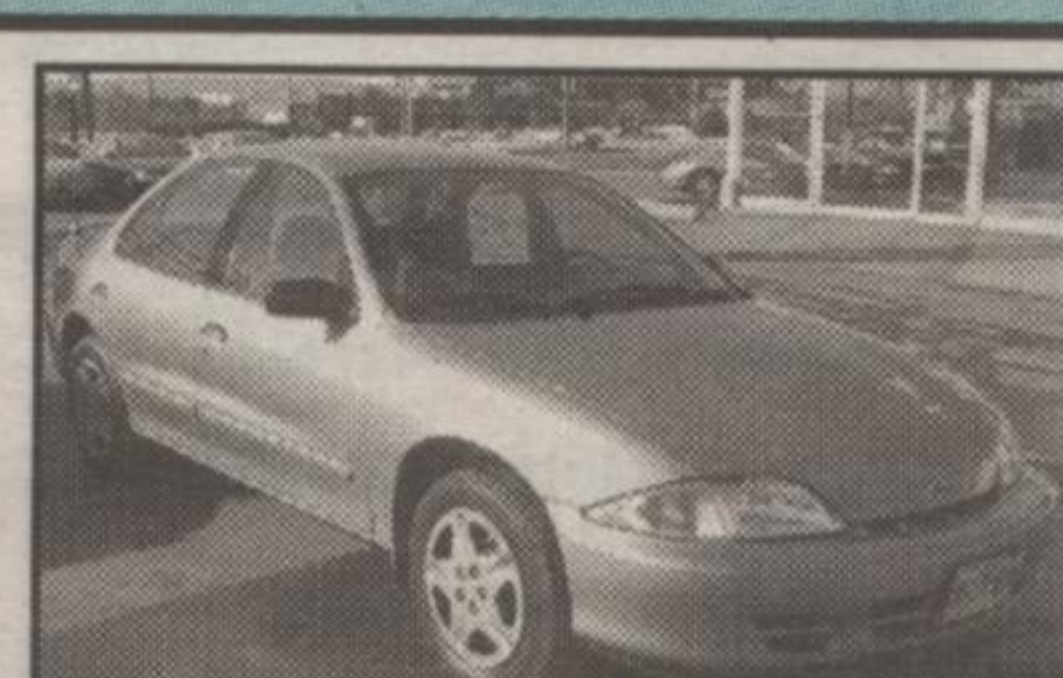
1998 Chev Blazer 2 dr. 4x4
4.3L V6, Auto, Air, P/Wind, P/Locks, Tilt, Cruise, keyless entry, remote start. Only 38,000km. P1931
No Hassle Prices \$21,900



1997 Chev Traker 2 dr. 4x4
4 cyl, 5 spd, cassette. Less than 60,000 kms. Med green, gas miser. P1889
No Hassle Prices \$10,900



1999 GMC Savana 8 pass. Wagon
350 V8, auto, air, F&R, CD, P/Wind, P/Locks, tilt, cruise. Perfect for trailer towing. P1918
No Hassle Prices \$24,900



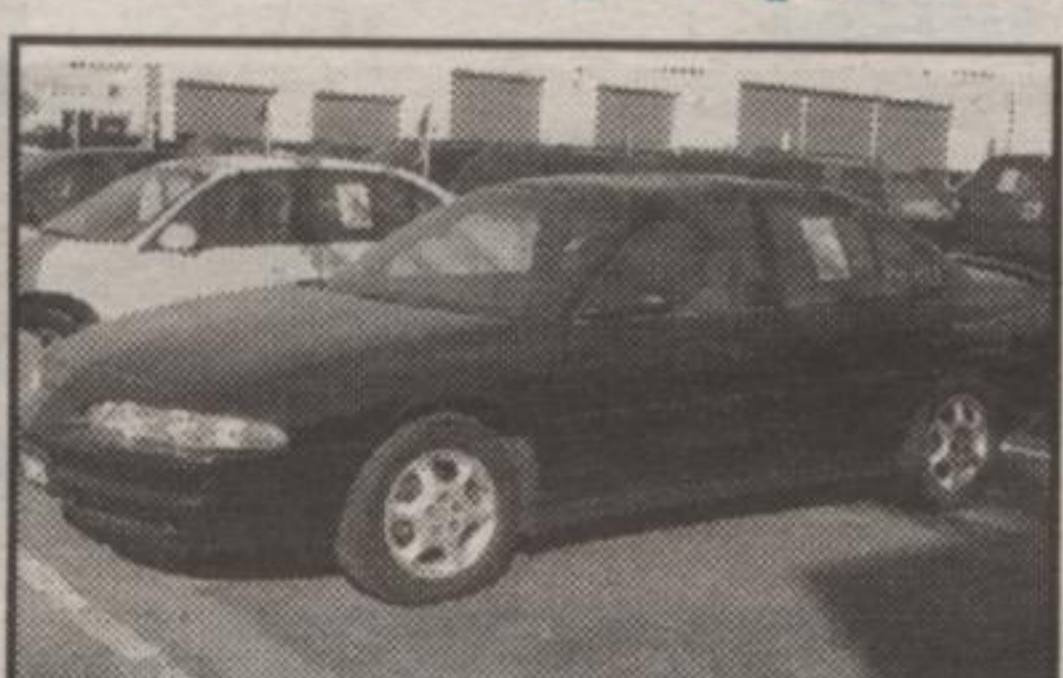
2000 Cavalier LS
2.4 DOHC engine, 4 spd, auto, P/Wind, P/Locks, CD, tilt, cruise, keyless remote, security alarm, cayenne red. P1923
No Hassle Prices \$15,595



1998 Chev Astro Van 7 Pass.
V6, Auto, Air, Cassette, Tilt, Cruise, P/Wind, P/Locks, Med Blue. P1940
No Hassle Prices \$15,900



1997 Blazer LT 4x4 A.W.D.
4.3 V6, auto, air, CD, P/Wind, P/Locks, tilt, cruise, P/Seat, leather inter. P1909
No Hassle Prices \$20,400



1999 Oldsmobile Intrigue GX
3.8 V6, 4 spd, auto, air, cass, P/Wind, P/Locks, tilt, cruise. Ultimate driving machine. Ex GM Co. Car. P1924
No Hassle Prices \$19,500



1998 Pontiac Grand Am
Auto, air, cass, P/Wind, P/Locks, tilt wheel, keyless entry, remote start. Med. green & beautiful. P1907
No Hassle Prices \$13,900



1997 Chev Lumina
V6, Auto, Air, Cassette, P/Wind, P/Locks, Tilt, cruise, and much more. Radiant silver, 1 owner, less than 48,000km. #811A
No Hassle Prices \$12,900

*Subject to prior sale. Deferred interest paid by dealer, OAC

Ask about USED VEHICLE LEASING

RICHARDSON CHEVROLET-OLDSMOBILE

Hwy. 25 S. at Derry Rd., Milton

905-878-2393

1-888-461-8888

SALES HOURS	SERVICE HOURS
Mon-Thurs.....8am-9pm	Mon-Thurs.....8am-5pm
Friday.....8am-6pm	Friday.....8am-8pm
Saturday.....9am-5pm	Saturday.....9am-2pm