

Sponsor a stone for the Gazebo Walkway

Special to The Compass

Commemorate the new Millennium by sponsoring a walkway stone for the "Milestone" walkway that will lead to a Gazebo located in the Tomorrow Garden at Chris Hadfield Park.

Designed as a lasting legacy to the community for generations to come, the Millennium Garden addresses each of the perspectives from the Town of Milton's 2000 Millennium there: "Yesterday, Today and Tomorrow." Many Miltonians, including the Horticultural and Historical Societies of Milton, are helping to create this beautiful legacy for the 21st Century. The garden will be completed by summer 2001.

The Milton Millennium Garden Committee is pleased to be able to offer the purchase of engraved stones in its commemorative "Milestone" walkway. Local Brookville artist and owner of

Casson's Classics Albert Casson is engraving each stone using specialized laser equipment.

Stones are 8" x 5", and can accommodate an inscription that includes up to three lines of text with 12 characters per line. Suitable for engraving your community group or organization name, a family or business name, in memory of a loved one, in honour of an individual, or to recognize a memorable occasion that took place in 2000.

To date, 60 stones have been purchased by a variety of individuals, families, schools, churches, businesses, and community groups such as Kinsmen Club of Milton, Percy W. Merry Public School, Holy Rosary Parish, Mohawk Raceway and Milton SKD Oldstars. The goal is to sell at least 100 stones with proceeds going toward the cost of creating the Millennium Garden. Plant materials and services valued

at \$9,355 have also been donated to the Millennium Garden by local business and individuals.

Cost per stone is \$100, payable to the Town of Milton via cheque, VISA or Mastercard. The Town of Milton will issue an official tax receipt. For more information or to obtain an order form contacts Lana Burchett, Coordinator, Community Services at 905-878-7252, ext. 2166 or leave a message on the Milton Millennium Hotline at ext. 2184. Deadline for placing an order is March 1, 2001.

Warmth for the Gambrel Barn

Special to The Compass

The hum of new heaters bringing warmth to the Gambrel Barn is music to the ears of the Board of Directors of Country Heritage Park at Milton. Thanks to a grant from the Ontario Trillium Foundation, a heating system and circulating fans have now been installed in the Gambrel Barn, making the facility suitable for year-round events.

"The Gambrel Barn is our main rental facility on the 80-acre site, and is used for a wide variety of activities, from wedding receptions to trade shows, entertainment events and corporate parties. Having the facility heated will greatly enhance the revenue potential of the site, and I expect that it will book up early for Christmas," states Reg Cressman, General Manager of the park.

The Gambrel Barn is a 62' x 132' (8,000 square foot) barn constructed of wood post and beam. The exterior is pine board and batten. Inside the barn is an expansive pine loft of 2,500 square feet, with two winding stairways connecting the loft to the main floor. In summer the interlocking cobblestone brick walkways create an inviting courtyard surrounded by lush flowers and trees.

(continued on page 19)

Donna Danielli's

Just Kidding Around



February's fun!

It may be the shortest month of the year but February is big enough to contain lots of fun things to do with the family. Not only is this a great time of the year to sled, have snowball fights and ski, but there are also these great events in which to take part.

The Town of Halton Hills offers an **Emergency First Aid** course at the Civic Centre Esqueuing Room on Saturday Feb. 10. This course runs from 9:00 a.m. to 4:00 p.m. for a cost of \$60. Find out more by calling 905-873-2601, ext. 2262.

The Town of Milton invites 8 to 12 year olds to "**Be Mine**" on Saturday Feb. 10. Kids can make valentines for their friends and family, do some baking and play games at Hugh Foster Hall from 1:30-3:30 p.m. Cost is \$22 per child; preregister by calling 905-878-7211, ext 23.

Upstairs At Loblaws has several choices for cooking classes for kids this month. Lisa Kirk dishes up fun for caregivers and children aged 3-5 at "**Be Mine**" on Friday, February 9. "**Be Mine**" runs from 10-11 for a cost of \$7. Kids of all ages are invited to make **Chocolate Treats** with Christine Thomas on Friday, February 9 from 4-6 p.m. Cost is also \$7. If your kids love eggs, think about "**Kids, Get Cracking.**" On February 17 from noon to 2 p.m. Wendi Heibert will be on hand to teach kids to make frittatas, omelettes, and the world's best egg salad. Cost is \$5. Preregistration is recommended for all these classes as space is limited. For more information, call Christine Thomas at 905-875-6871.

Mountsberg Wildlife Centre has two special events running this month. Join "**Owl Prowl - Family Night**" on February 3 at 6:30 p.m. for a wild time that includes a walk through the woods, visiting live owls, and learning about them in a puppet show presentation. Cost for this is \$10 for adults, and \$7 for children under 14. Also enjoy a "**Winter Day in the Country Festival**" on Feb 10-11 from 10 to 4 each day. Take part in sleigh rides, cross country skiing, skating on the farm pond, birds of prey demonstrations, bonfires and tobogganing. Cost is \$5 for adults, \$3.50 for kids under 14 and preschoolers are free. For information about either event, call Mountsberg at 905-854-2276.

Crawford Lake invites everyone to come out for "**Snowflakes and Snowsnakes**" on February 11. This event runs from 10:00 to 4:00 and includes legends in the longhouse, marshmallow roasts, native games, craft making and more. Cost for this is \$5 for anyone over the age of five; call 905-854-0234.

The slopes will be jamming throughout February for "**Boardtopia Triple X Evening Games**" at Glen Eden Ski Area. Open to novice and pro riders, events will include Big Air, Halfpipe and Slope Style fun. This takes place from 6:30 - 10:00 on February 3, 10, 17 and 24, with preregistration starting at 4 P.M. each day. Over \$10,000 in giveaways including cash. Call 905-878-5011 to find out more.

In just a few short weeks, I'll be back with all sorts of things to do with the kids over the March Break. If you have an event or camp you'd like to see in Just Kidding e-mail me at ddanielli@interhop.net or phone me at 905-854-2469. See you in March.

Advertise in The Compass

Hitherfield School

is having an

Open House!

Are you considering private education?

We cordially invite you to join us

Saturday, February 24th

from 1 p.m. - 3 p.m.

to meet our teachers, wander our halls, and find out why Hitherfield has developed a reputation for excellence in elementary education in its ten years in the Milton area.

Hitherfield School is located on

10th Sideroad in Campbellville

just north of the 401, 1/2 km. west of Guelph Line

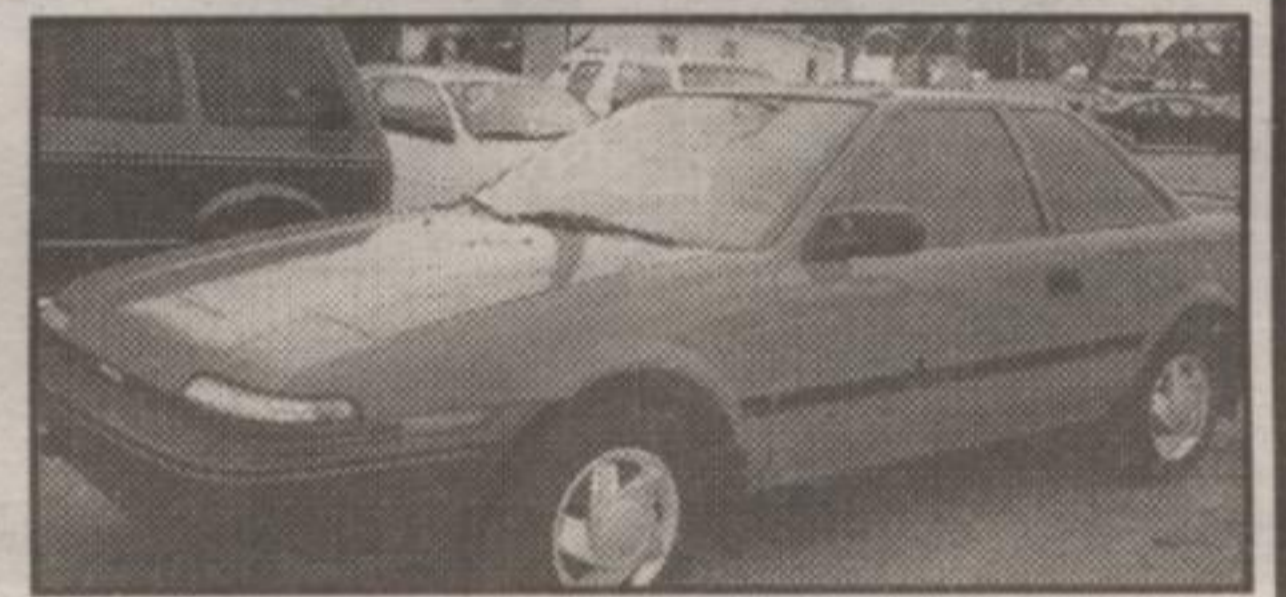
We can be reached at 905-854-0890.



1990 Toyota - SR15

- Original Paint/ Cherry Red
- 119,000 km, Fully Loaded
- All previous owner info available
- Spotless Grey Interior

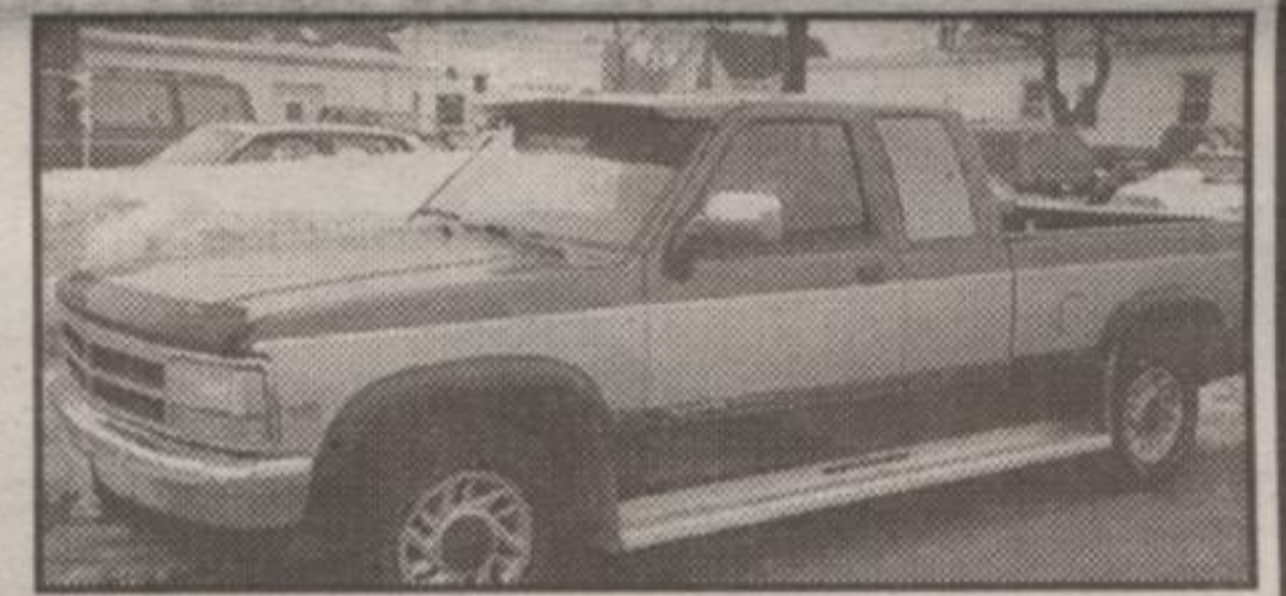
\$4,495 with 1 yr. warranty



1992 Dakota Pick-up Truck

- Extend Cab
- One Owner • 120,000 km

\$7,995 with 1 yr. warranty



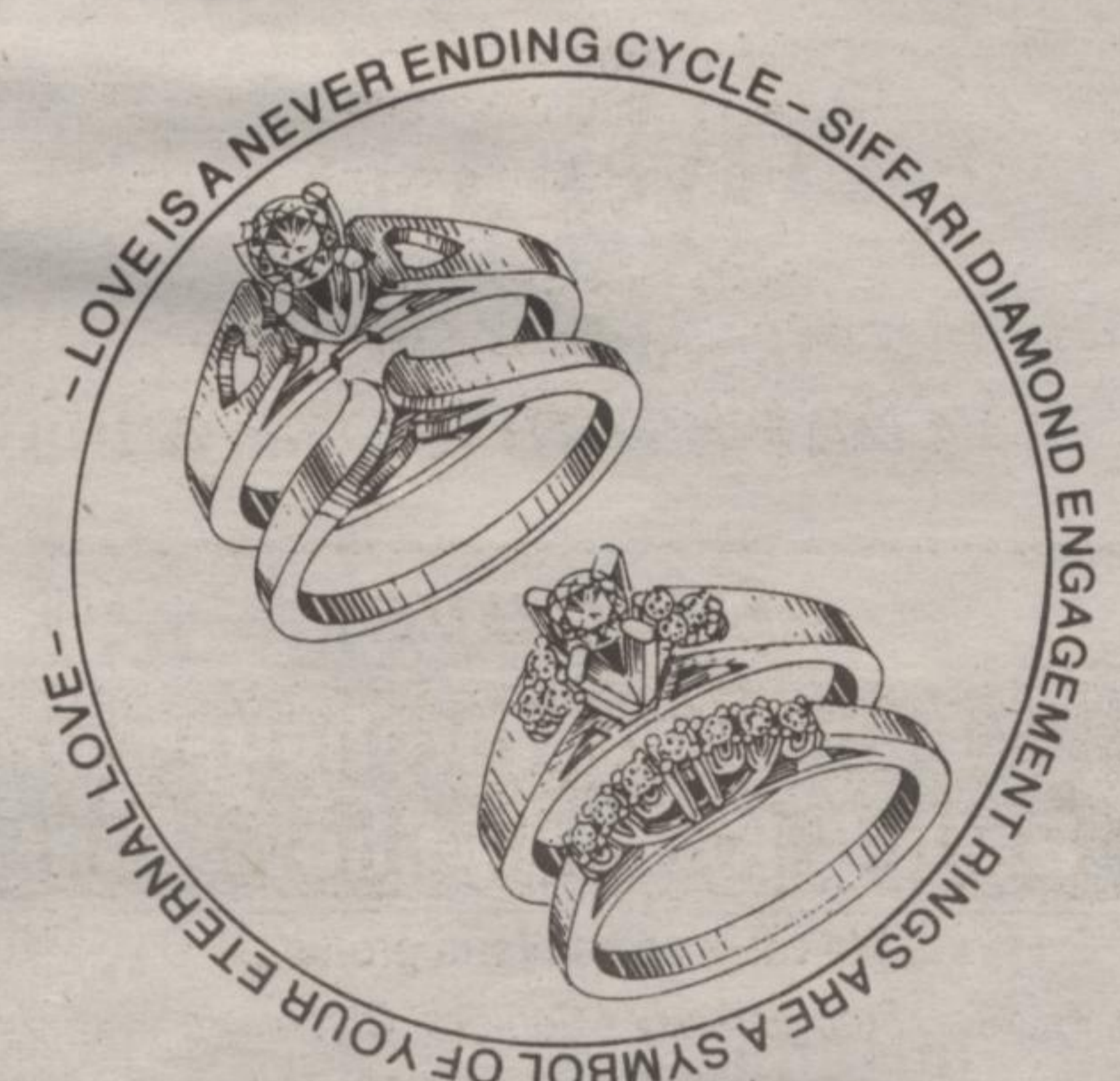
Slessor MOTORS

You pay less ... when you buy from Sless!

388 Main Street, Milton

905-875-0089

FOREVER YOURS



by **Siffari**

The magic of your love is forever expressed in an exclusively designed engagement ring by Siffari.

Select the ring in your price range that tells her your love will last forever.

JEWELRY

310 GUELPH ST., UNIT 5, GEORGETOWN

SCRIBBLES

A creative, educational, "fun" program for children ages 2 1/2 to 5

2 1/2 hour classes include:

- circle time
- creative crafts • music
- dramatic play
- science • sensory and nature activities
- introduction to computers
- field trips •

For more information call (905) 878-4697

50 Nipissing Rd. #10 & 11, Milton

kidz korner