

Heritage Award Winners

Sunday, February 18th the Heritage Awards, co-sponsored by the Milton Historical Society and Heritage Milton LACAC, will be presented at Hugh Foster Hall, Milton from 2 to 4 p.m., to the deserving recipients. The many categories include Writing, Education, Visual Arts and Architecture. It will be an informative event with presentations by the winners. Everyone interested in the history of Milton is welcome and will enjoy this event.

Bell'occhio

gifts and good things

Original gift ideas for your special Valentine



- Belle de Provence Soaps & Fragrances
- Contemporary Jewelry
- Wall Art, Prints & Plaques
- Home & Garden Accents

500 Steeles Avenue East, Milton
905-693-9888

MILTON OPTICAL



COVERGIRL™ EYEWEAR

• Lab on premises • Eye Exams Arranged

• Certified Contact Lens Fitter

15 Martin Street, Milton
(Carriage Square)
Martin & Main Streets
905-876-0556

Milton's physician shortage

Is there a doctor in town?

by Donna Danielli
The Compass

Milton is poised for an incredible amount of growth in the next few years, which will be a boon to businesses in the area, but will also stress an already overburdened family physician network. A severe shortage of doctors has already placed Milton on the Ministry of Health's List of Areas Designated as Under-served (LUDAU). Currently Milton has 14 family physicians with full practices, but under the College of Physicians and Surgeons of Ontario (CPSO) guidelines of one physician for every 1,400 people, Milton should have at least nine more family doctors.

John Oliver, President and CEO of Halton Healthcare Services made a presentation detailing the need for physician recruitment to the Town of Milton Council on Monday January 8. Halton Healthcare Services is the amalgamation of Milton District Hospital and Oakville Trafalgar Memorial Hospital into one entity with one Board of Directors, an operating budget of over \$100,000,000 and more than 1,800 staff. The key issue of Oliver's presentation was the need for family

physicians in Milton, with an estimated 40 physicians required by the year 2005. The impact of this family physician shortage is seen in the growing number of Milton residents who can't find a family doctor in town, poor continuity in care, long waits in emergency rooms, and business development implications. Oliver also stressed the need to remember the impact this shortage has on the physicians already in practice in Milton.

"They're overworked due to a large patient load, they have difficulty taking time off because no one can cover for them, and they are faced with increasing on-call expectations which could result in the physicians opting out of hospital practice."

As well, in Milton there is the risk of increasing use of the Emergency Department for primary care that is inaccessible to any who cannot find a family physician.

Oliver spoke at length about the Hospital initiatives which include job postings at all medical schools in Canada as well as advertising in medical journals, and the development of a brochure profiling the hospital and the communi-

ty. Presentations have also been made to MEDAC and to the Milton Chamber of Commerce. Halton Healthcare Services has been added to the provincial recruitment list as an under-served area and is registered with the Rural Ontario Medical Program, a Ministry funded program that prepares medical trainees to work in rural and non-urban communities. Oliver also spoke to the need for office space development within Milton, explaining that new medical graduates are more interested in group practices with shared overheads than in individual practices.

His presentation to Milton Council was for information purposes only, to keep Council abreast of the situation. A solution to the physician shortage would ideally involve participation in a recruitment process that includes Council, Milton Chamber of Commerce, community minded businesses, as well as provincial aid.

"This is a wonderful community for young families, with a host of opportunities," Oliver concluded. "We are looking forward to collaboration and co-operation within the community."

Remembering Ken Ella

by Betty Brownridge
The Compass

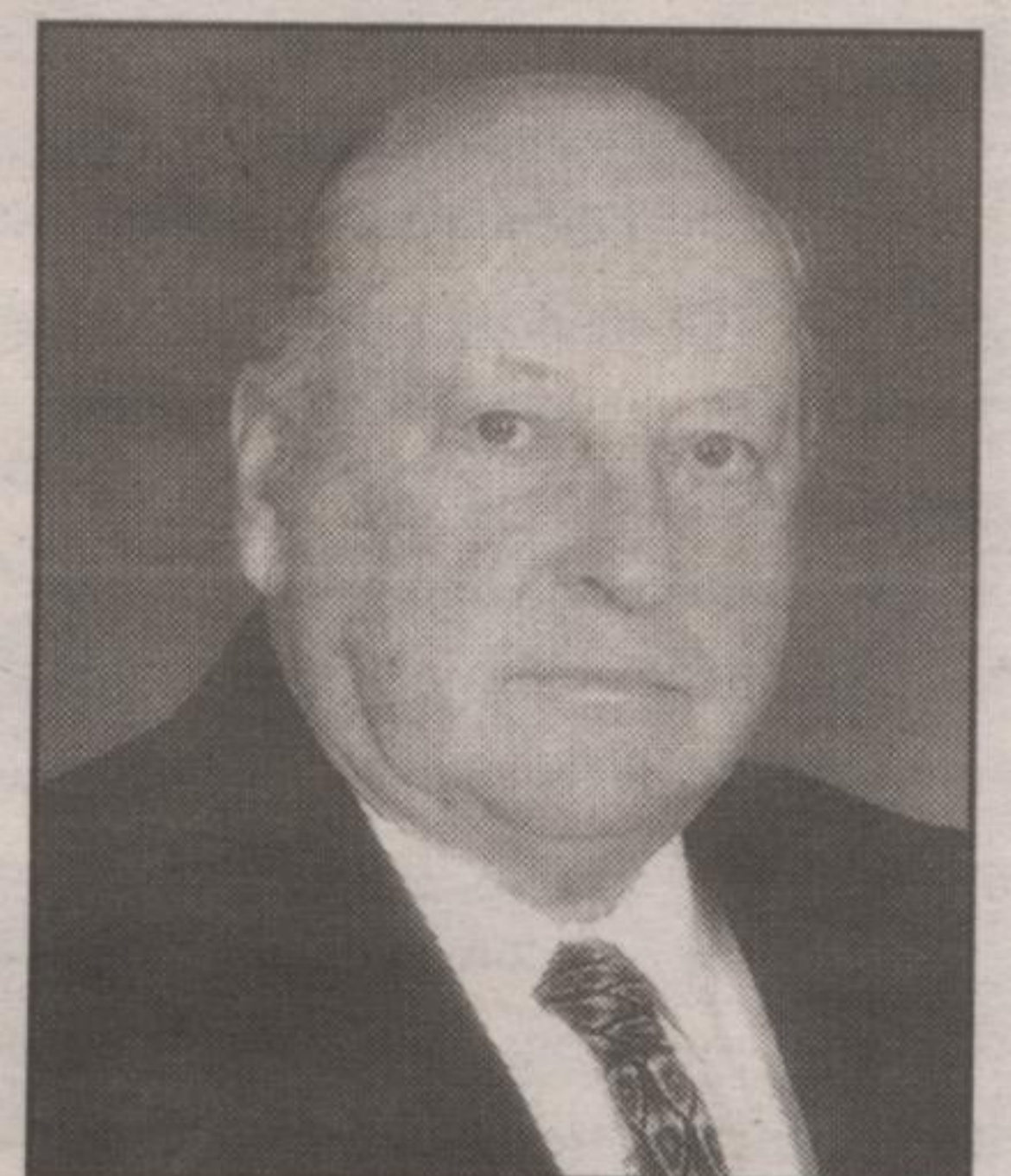
Well known Halton farmer Kenneth Ella passed away at his home in Hornby on Saturday December 9th, 2000. Ken was born at Brampton on January 21, 1921, the eldest of three children of Lorne and Harriett Ella. They farmed on the third line east on what is now Dixie Rd. In 1939 the family moved to Rockwood to continue raising Jersey cattle. Ken met Velma Adams of that community and they were married in 1941. They raised three children, Keith, Lorne and Valerie.

After farming at Rockwood on their farm which they named Rock Ella, they moved to Hornby in 1948. To supplement their income they built a hen house and established an egg grading and retail business which grew to 8000 hens. Many local young

people found employment there.

The main focus, however, was always their keen interest in Jersey cattle and the Rock Ella herd. The Ellas became well known in the livestock world for their high quality Jerseys and showed at the Royal Winter Fair, CNE and other top shows, as well as local fairs. Ken was highly respected as a judge at shows culminating in a "Railbird" judging award at Louisville Kentucky by defeating 362 contestants. In 1995 the World Jersey Cattle Bureau honoured his contribution to the breed with an Honorary Life Member Award.

Ken carried out leadership roles in Soil and Crop, Federation of Agriculture, Georgetown Fair Board and other rural organizations. He



KENNETH LORNE ELLA

took a great interest in the development of rural young people and shared his expertise with Junior Farmers and 4-H youth.

After son Lorne took over the farm Ken and Velma travelled to many countries and also toured with their motorhome.

Besides his wife Velma, he leaves his children, five grandchildren and six great-grandchildren.

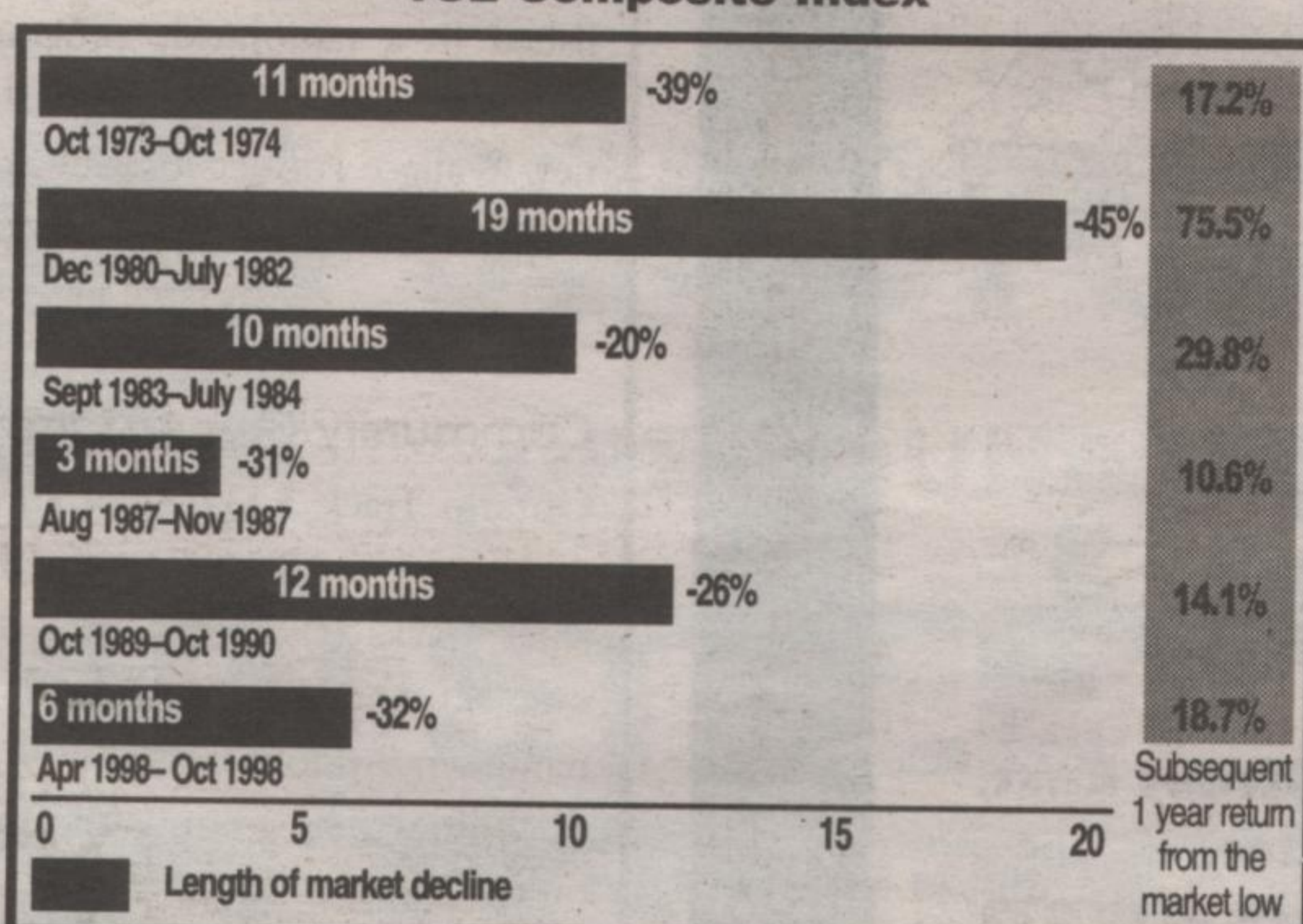
Ken was an active member of St. Stephens Anglican Church in Hornby where the funeral service was held on December 12th.



BERKSHIRE INVESTMENT GROUP INC.

Bear markets can present longer-term buying opportunities

TSE Composite Index



Recent volatility in world investment markets has led many investors to be concerned about the short-term performance of their investments. However, history has repeatedly demonstrated that a long-term investment perspective will be rewarded - that being fully invested in the midst of crisis and remaining optimistic and patient will eventually pay off.

For more information on how to maximize your long-term investment returns, please call for a consultation.

DEBORAH
EATON-KENT, CFA
FINANCIAL ADVISOR
12100 - 6th Line, R.R.#1,
Acton L7J 2L7

TELEPHONE (519) 853-5017
COGNASHENE (705) 756-8982
FACSIMILE (519) 853-4136
EMAIL deatonkent@berkshire.ca



The Rockwood
Lioness
Valentine Dessert
Euchre & Bridge Party
February 14, 7 p.m.
Rockmosa Community
Centre, \$5
Prizes and Dessert!