



A MONTHLY SURVEY THROUGH THE FARM FENCEROWS AND VILLAGE VERANDAHS OF NASSAGAWEYA, ESQUESING AND SOUTH ERAMOSA

COME TO A HANGING!



THE *Dorland Haight* GALLERY INC.

144 Main St., Milton ON
905-875-1751

The North Halton Compass

**Bergsma's
Paint & Wallpaper**

Imagine inviting surroundings with helpful, knowledgeable staff
Imagine a warm ambience to inspire your creativity
Imagine no more!

MOORE PAINTS
A STRIKE OF EXCELLENCE

Georgetown - Marketplace Mall
Milton - Downtown
Brampton - Hwy 10 N 407
Serving Halton since 1968

VOLUME 3, ISSUE 3

"A RURAL PAPER TO CALL OUR OWN"

JUNE, 2000

Grounds for a study

Information night for safe water in Campbellville

BY DONNA DANIELLI
THE COMPASS

On Thursday, May 4, an information session regarding Campbellville residents' input on the Campbellville Ground Water Study was held at Campbellville Lion's Hall. In attendance were David Ketcheson, Senior Environmental Engineer of Azimuth Environmental Consulting; Steve Holysh, a hydrogeologist employed by the Region of Halton; Councillor Barry Lee and approximately 30 concerned citizens. Azimuth Environmental Consulting has been retained by the Region of Halton and the Town of Milton to assist in ground water investigation, a study that is partly funded by the Ontario Ministry of the Environment, through the Provincial Protection Fund.

"When we do an evaluation, geologically speaking, we're taking a snapshot," explained Ketcheson. "We want to talk to anybody that knows the area and has lived here 10, 20, 40, 60 years and can tell us what's gone on, what's changed and what's the history."

Halton supplies ground water to about 60,000 people in Milton, Georgetown and Acton. An additional 20,000 people in the rural area also use ground water from their private wells. There are 5,700 wells in Halton on record with the Ministry of the Environment, the majority of which were drilled between 1946 and 1982. Since 1982, it is estimated that another 700 wells have been drilled in Halton for a total of approximately 6,400.

Hydrogeologically sensitive areas have been pinpointed across Halton Region where aquifers and the ground water table are found close to the surface, especially in the Campbellville area, with its

many fractures.

Centuries ago, it's assumed that a huge stream eroded the area. Glaciers scraped away metres of rock and fractures popped open because they no longer had the weight of the rock on them. This left Campbellville as an area of highly permeable sand and gravel atop a layer of shale. The ground water study is essential since the large buried valley under the community filled with sand and gravel allows ground water to flow from above the Niagara Escarpment down to the municipal well field near Kelso Conservation Area. Therefore, any land use activities in the Hamlet of Campbellville can impact both the quality of the ground water within the Hamlet, as well as the quality of the ground water that eventually moves eastward to Milton's municipal wells.

Campbellville's Murray Inglis represents local residents on the steering committee for the study, a committee that also includes Councillor Barry Lee and local and regional staff. Inglis cited the example of Campbellville Pond and its deterioration as an example of what's at stake.

"Campbellville is going to grow and since we're on well water, we need to be concerned," he says. "I'd like to make sure that we have both the quantity and quality of water. It's good to take all the precautions we can."

Following the information session, Ketcheson and Holysh opened the floor to questions. Many citizens were concerned about the increased usage at Mohawk Raceway since the installation of slot machines, and what that means to their water

supply. Mohawk Raceway has its own sewage lagoon and the study will evaluate how that system works and whether or not Mohawk is creating a draw that detrimentally affects local residents' water.

Councillor Barry Lee asked, "Whose responsibility is it when well water becomes unusable when effected by outside influences?" Holysh responded that the Ministry of the Environment is the governing body.

"They will investigate and take action," he explained. "They have that legislative stick." Holysh also stressed that the study is proactive, initiated by the Region of Halton and the Town of Milton and is not development driven. Councillor Lee underscored the importance of this, stating, "We are going to experience development pressure. We have to know if it's sustainable around here for future development. If not, that gives us a defense."

Ketcheson further illustrated the importance of this, adding, "The purpose of the study is to understand how ground water works so that protective measures the Region wants to put in are effective. This study tries to give individuals a tool to make their measures or actions effective."

The next step is to compile background data and develop a conceptual model. The study will then test hypotheses by pump testing different formations and sampling surface water streams to compare their chemistry with "flow" zone samples. Following that, the model will be revised according to study findings.

A booth at Milton Fall Fair in September will be dedicated to information and study updates.

COMMUNITY SAFETY ZONES



PHOTO BY REID KENNEDY

On May 9th, the Region's finest promoted public awareness concerning Community Safety Zones. In 1998, the provincial government passed Bill 26 allowing municipal councils to designate CSZ's. In the zones, fines for speeding are doubled. Currently, there are three CSZ's in Halton being tested along sections of Maple Avenue and Mountainview Road in Georgetown and through Brookville on the Guelph Line. Pictured L. to R. are Deputy Chief Gary Crowell, Constable L. Barnett, Region Chairman Joyce Savoline and Region C.A.O. Brent Marshall.

Inside This Month's Compass

A beautiful business

Anita Matesich opened A&M Interior Design, Campbellville, in 1994 initially as a hobby. The store first specialized in the sale of fabrics for the home, but the business quickly blossomed into a full fledged Design Studio serving a variety of clients.

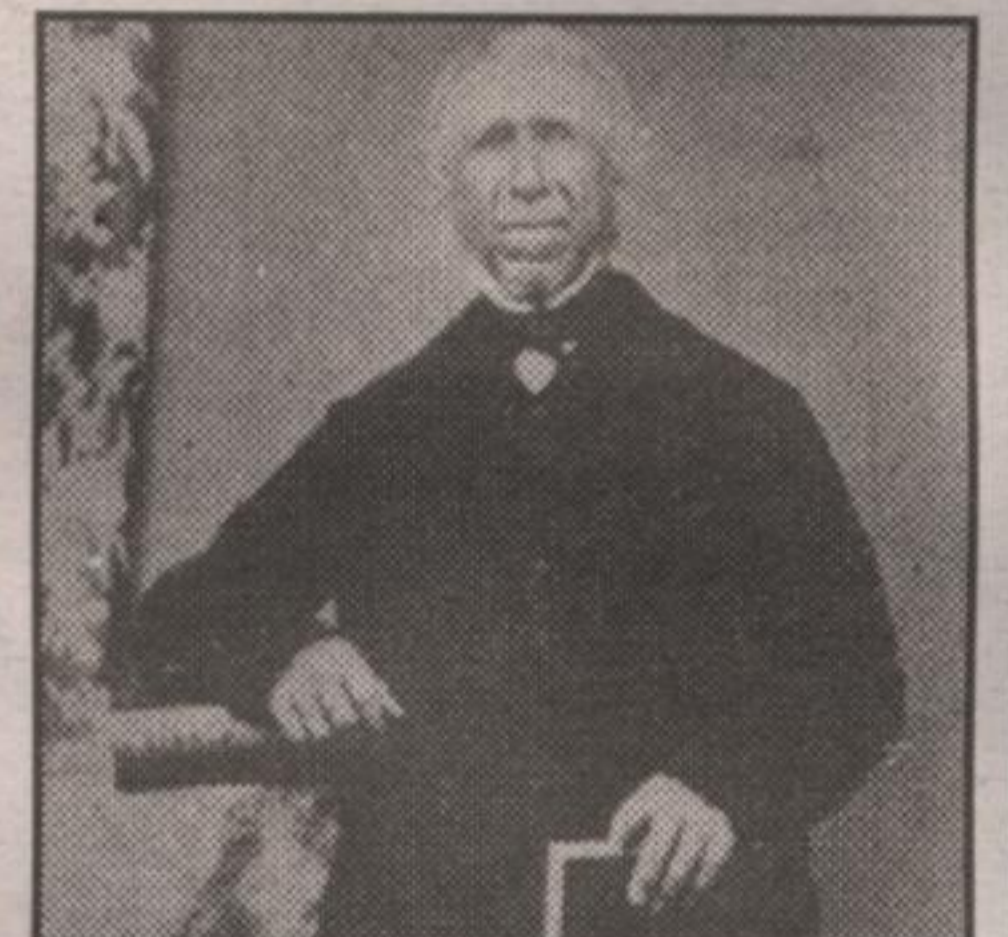
see page 3



Shoebbox Memories

A committee was authorized to purchase property for a church building and burial ground from Andrew Laidlaw on the north corner of Lot 6 Conc. 4 W. for the First Presbyterian Congregation, now known as Boston Presbyterian Church.

see page 10



Idle Pursuits

As a self-taught artist, Laura Kingsbury works mostly in watercolours, and recently in soft pastels and acrylics. She's been painting professionally for 18 years, having become well known for her intimate portrayals of native wildlife, especially songbirds.

see page 15



Birthday celebrations

Jessie Glyn was 95 years old on May 3rd. Although Jessie now resides in Brampton, she is in constant touch with her many friends in the Georgetown area and Limehouse where she and her late husband John resided for 40 years.

see page 18



Campbellville & Area Business Association

invites one & all to join us in the celebration of the village's



86th

Birthday

June 24th and 25th

Enjoy a weekend of
special events throughout
Campbellville and a warm welcome
in our unique shops & eateries

